

Markets and Financial

JAP WAR FEAR TIES UP STOCK MARKET DEALS

NEW YORK, Nov. 29 (AP)—Worries over threatened war with Japan, plus further tax selling, again tied up the stock market today although resulting in no special weakness for leaders.

The list dabbled in slightly mixed trends at the start and, while scattered favorites managed to hold on to small advances at the close of the brief proceedings, fractional declines were widespread.

Transfers of around 400,000 shares were among the largest for any Saturday this year.

Commodities pushed up briskly in the wake of house concessions to agriculture on parities placed in the price law passed yesterday. Bonds were irregular.

Among stocks American Telephone once more dipped to a 1941 bottom. Backward most of the time were U. S. Steel, General Motors, Chrysler, United Aircraft, Southern Pacific, and Allied Chemical.

Carload Potato Shipments

Day of Month	Season 1941-42			Season 1940-41		
	Daily	Nov. to Date	Season to Date	Daily	Nov. to Date	Season to Date
1	31	31	1771	25	25	1815
2	0	31	1771	26	51	1841
3	24	55	1795	6	57	1847
4	42	97	1837	23	80	1870
5	41	138	1878	34	114	1904
6	52	190	1930	34	148	1938
7	50	240	1980	30	178	1968
8	48	294	2034	30	208	1998
9	3	297	2037	56	264	2054
10	41	338	2078	4	268	2058
11	7	345	2085	3	271	2061
12	51	396	2136	42	313	2103
13	27	423	2163	45	358	2148
14	18	441	2181	4	406	2190
15	20	461	2201	44	450	2240
16	0	461	2201	59	509	2299
17	13	474	2214	1	510	2300
18	18	492	2232	52	562	2352
19	20	512	2252	43	605	2395
20	0	512	2252	43	648	2438
21	13	525	2265	1	649	2439
22	14	539	2279	26	675	2465
23	0	539	2279	37	712	2502
24	20	559	2299	5	717	2507
25	18	577	2317	43	760	2550
26	17	594	2334	30	790	2580
27	13	607	2347	34	824	2614
28				35	859	2649
29				32	892	2682
30				28	920	2710
31						

Month Shipments by Truck (1940)

Company	Shipments
United Corporation	5/16
United Drug	6
United Fruit	75
U S Rubber	231
U S Rubber pfd	101
U S Steel	301
Vanadium	191
Warner Pictures	51
Western Union	251
Westinghouse	751
Woolworth	261

POTATOES

SAN FRANCISCO, Nov. 29 (AP-USA)—Potatoes: 5 cars California, 12 Oregon arrived; 23 unbroken, 18 broken cars on track; market dull; Oregon Klamath district Russets No. 1, \$2.00-2.05.

LOS ANGELES, Nov. 29 (AP-USA)—Potatoes: 13 cars California, 3 Idaho, 4 Oregon, one Nevada, one Utah arrived; 66 unbroken, 27 broken cars on track; by truck 8 cars California, one Idaho arrived; no Oregon quotations.

S. F. LIVESTOCK

SOUTH SAN FRANCISCO, Nov. 29 (AP-Fed-State Market News Service)—Hogs: for five days salable receipts 2300. Compared with Friday week ago, barrows and gilt steady to 10c lower, sows steady to 10c higher; late bulk medium and good 170-235 lb. \$11.05-15; choice quotable to \$11.25; medium and good sows late \$8.25-85. Today: salable none.

Cattle: for five days salable receipts 400. Compared Friday week ago: slaughter steers and heifers steady to strong, cows fully 25c higher, instances up more, bulls steady to 25c higher; most medium and good 850-1150 lb. slaughter steers \$10.00-75; small lots common and medium heifers and steers \$8.50-9.75; few medium cows and heifers mixed at \$8.50; most common and medium beef-type cows \$7.00-8.00; canner and cutter cows of dairy type \$5.00-6.75; medium and good 1400-1700 lb. sausage bulls \$8.25-9.00; common and medium light-weight bulls \$7.50-8.25. Today: salable none. Calves: for five days salable receipts 50. Vealers steady to 50c higher than week ago; slaughter calves steady; few head good and choice vealers \$11.50-13.00; common and medium vealers and calves \$8.50-11.00.

Sheep: for five days salable receipts 1950. Compared with Friday week ago: slaughter lambs steady to 25c higher, slaughter ewes steady; early in week several loads medium and good woolled lambs 77-100 lb. at \$10.25-11.00; week's top \$11.50 for choice 82-84 lb. weights; medium and good ewes \$4.50-5.50; cull and common grades \$2.50-4.00. Today: salable none.

'UNCLE TOM' DIES AT BLY

BLY—Proof of the high esteem which was tendered to "Uncle Tom," as W. T. Garrett was affectionately known to his fellow men, was shown by the large attendance at his funeral services which were held Wednesday afternoon at 2 o'clock in the Bly Community church. Even the vestibule of the church was crowded to the outer door. Flowers were in profusion as his body lay in state at the foot of the altar. Relatives and friends had come from far and near to pay tribute to one of Bly's most worthy pioneers.

Request songs of his beloved wife, "Aunt Molly," were sung by the choir composed of Ruth Green, Marge Strong, Rachel Robin, Nellie Wallis, Inez Griffith and Inez Harris, accompanist.

Reverend B. V. Bradshaw of Beatty delivered a most touching sermon. Pallbearers were George Boyd, Basil Hall, L. T. Richardson, James Watts, Jack Hannan and Ed Casebeer, long time friends of the family. Joey Owen was honorary pallbearer and Joe Wallis was in charge of arrangements. Sheriff Lloyd Low drove the car which led the funeral procession to the cemetery.

"Uncle Tom" will long be remembered by all who knew him. His wife, Molly Garrett, and his son, Clarence Garrett, are extended the deepest sympathy by all neighbors and friends in their hour of bereavement.

PORTLAND LIVESTOCK

PORTLAND, Ore., Nov. 29 (AP-USA)—HOGS: For week, salable 3930; compared to week ago, market 25 cents lower; practical closing top on 175-215 lb. butchers \$10.50, early week top, \$11.15; at close 250-300 lb. butchers, \$9.25-10.00; packing sows, \$7.00-50; feeder pigs mostly \$9.50-10.00.

CATTLE: For week, salable 2975; calves 200; slaughter steers steady to strong, spots higher; good heifers steady, medium grades weak; beef cows strong to 25 cents higher, canners and cutters up more; bulls 25-50 cents higher; vealers 50 cents higher; good fed steers, \$11.00-75; one load \$12.35; grassers and short-feds, \$9.25-10.75; load and odd lots fed heifers \$10.50; grassers and short feds \$8.25-9.75; mixed good cows and heifers \$8.75; top young cows \$8.25; bulk good grades, \$7.50-8.00; medium \$6.00-7.50, and canners and cutters \$4.50-5.75; medium-good bulls, \$7.50-9.00; good-choice vealers, \$11.50-12.00; common down to \$8.00; good feeder steers \$9.00-7.50.

SHEEP: For week, salable 2325; slaughter lambs firm; fat ewes strong to 25 cents higher; other classes unchanged; top fed woolled lambs \$10.50; bulk good grades \$9.75-10.25; medium down to \$9.00 and common to \$7.00; slaughter ewes \$5.25 down; feeding lambs \$8.00-9.00.

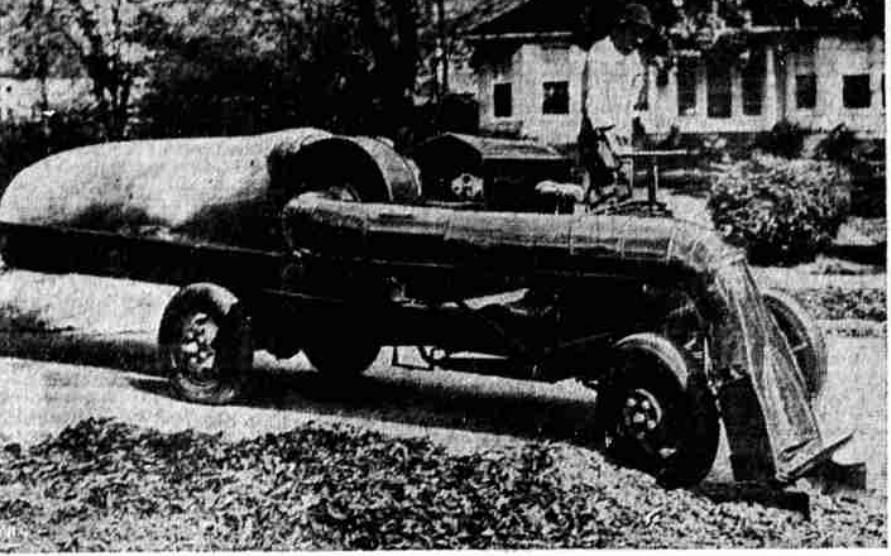
CHICAGO POTATOES

CHICAGO, Nov. 29 (AP-USA) Potatoes, arrivals 92; on track 362; total US shipments 417; supplies liberal; demand very slow; Idaho Russets weaker; offerings other sections, dull and slightly weaker; Idaho Russet Burbanks, US No. 1, \$2.20-40; Nebraska Bliss Triumphs, US No. 1, \$2.40; Colorado Red McClures US No. 1, \$2.12-20; Minnesota and North Dakota Bliss Triumphs, \$1.40-65; Cobblers, \$1.40-45; Wisconsin Katahdins, \$1.50; Cobblers \$1.40.

NO CARDS

FORT RILEY, Kas., Nov. 28 (AP)—The army personnel was reminded in the daily bulletin today that the war department discourages the exchange of Christmas cards between men in the service.

Does Everything but Toast the Marshmallows



Boon to football fans, young boys and old husbands is this leaf picker-upper designed by Fred Gedge of Wyoming. O. Joe Sontag, village mechanic, demonstrates creation made from old truck, old motor, old fan, old pipe and old lots of things.

Growing Up!



Little hard to believe, but it's Shirley Temple—looking all of her 14 years—vacationing at Pa'm Springs, Calif.



NO CARDS
FORT RILEY, Kas., Nov. 28 (AP)—The army personnel was reminded in the daily bulletin today that the war department discourages the exchange of Christmas cards between men in the service.

WOMAN ADMITS TAKING LOOT

ABERDEEN, Nov. 28, (AP)—A Grays Harbor farm wife, who carried more than \$3000 in her purse, last night admitted shoplifting about \$75 worth of goods from three stores here, Aberdeen police said today.

As she purloined each article, she checked it off against the name of a friend or relative on a "Christmas shoplifting list," Captain John Gillespie said. The captain said he caught the woman, whose name was withheld, "redhanded" in a department store when he saw her slip a fruitcake into a huge canvas shopping bag and walk out. In the bag and her car, officers found boys' suits, women's dresses, gloves, sweaters, leather jackets, handkerchiefs—even electrical fixtures—plus dozens of other items, all stolen.

In her purse was \$2100, in postal savings and \$1303.20 in cash. Gillespie said she filled her big bag at least three times yesterday, emptying it each time in her car and returning to the counters for more "gifts." The total loot was sufficient to furnish a present for every one of some 40 persons on the Christmas list.

She was released on \$50 bail, pending trial on larceny charges.

Customs Guard Convicted of Slaying Officer

HONOLULU, Nov. 29 (AP)—John K. Yeung, a customs guard, was convicted of second degree manslaughter by a federal court jury last night in the fatal shooting of Lieut. Martin R. Connelly, young army air corps officer of Syracuse, N. Y.

Lieut. Connelly was shot during an argument with Yeung over the inspection of a package of photographs shortly after he stepped from the liner President Cleveland last Sept. 22.

Yeung asserted his pistol discharged accidentally after being hit three times by Connelly.

Federal Judge Ingram M. Stainback said he would pass sentence Monday.

The average girl doesn't discover that candy is sold by the bag until she is married.

FOR HIS CHRISTMAS.
An Unfitted LEATHER TRAVEL CASE \$5.50 to \$7.50
DREW'S MANSTORE
733 Main

REACTION FOLLOWS GAINS FOR WHEAT

CHICAGO, Nov. 29 (AP)—Brisk buying activity, mostly representing covering of previous short sales, lifted wheat prices as much as 2 cents and soybeans almost 3 cents today before the grain market reacted and lost some of its advance.

Purchases were inspired principally, traders said, by modification of the price control bill before passage by the house and upward revision of official figures of parity prices.

Washington reports indicated that federal statisticians had raised the mid-November parity prices of farm products substantially because prices which farmers have been paying for supplies they consume turned out to be higher than originally estimated.

Liquidation of December contracts and some profit taking caused a reaction in all pits. Deliveries can be made on December contracts beginning Monday.

Wheat closed 1-1 cent higher than yesterday, December \$1.14-1.14, May \$1.19-1.20; corn 1-1c up, December 73c, May 79-1c; oats 1c up; rye 1-1c higher and soybeans 1-2c higher.

LIGHT ON LOVE ARMY MANUEVER AREA.

S. C. (AP)—When Staff Sgt. Donald Morgan, 114th field artillery, opened a mail package, he found a huge pencil, a flashlight and a note from his girl: "Dear Sweetheart: You can no longer use 'blackout' as an excuse for not writing."

Now he writes three times daily.

SURPRISING RESULTS! MASSAGE FOR HEALTH

For—
Colds
Sore Muscles
Female Disorders
Run-down
Underweight
Overweight

Kelp Ore Baths
Hermosa Baths
Scottish
Douche
Electro
Cabinets
Expert
Massage

Gertrude Lewis, Masseuse
At The

HEALTH CENTER
DR. C. B. CASSEL
NEW LOCATION--5005 So. 6th
Electro-Chiropractor Phone 4578
CITY BUS TO THE DOOR EVERY 20 MINUTES

'SEEING IS BELIEVING!'

This is a picture of Specialized Service Company's Radio Department. To the average person, all this paraphernalia doesn't mean much. But to "Brownie", our radio technician it means the proper equipment to know "why and wherefore" radios are not working properly!

Now "Brownie" doesn't fix brakes or offer motor tune-up service. His job is radios only. Both home as well as car radios.

Some time you are going to need his services--and we just wanted you to know what Specialized Service can offer you!

Specialized Service
1434 Main RADIO DEPARTMENT Dial 5103

When in Medford Stay at HOTEL HOLLAND Thoroughly Modern Joe and Anne Earley Proprietors

United Aircraft	344
United Airlines	13
Union Pacific	67
Union Oil Calif	149
Union Oil Ind	311
Union Oil N J	441
Stand Oil Calif	24
Stand Oil Ind	311
Stand Oil N J	441
Stone & Webster	51
Studebaker	41
Sunshine Mining	41
Trans-America	41
Union Carbide	711
Union Oil Calif	149
Union Pacific	67
United Airlines	13
United Aircraft	344