

Yuletide Greenery Grows Wild Here In Wide Variety

By LOIS STEWART
 Lucky Klamath folks when it comes to decorations for the home during the Christmas and New Year holidays. And the greens which they find, practically on their own door steps, are the traditional greens which the lover of the old fashioned holiday decorations finds head and shoulders above any other kind.

All you need in this part of the world is a little gasoline in the car, some old clothes and the thrill that comes from prowling through the woods after boughs, cones, juniper and Oregon grape. **STYLES DIFFER**

Some people decorate the whole house. Some simply hang a wreath on the front porch, put up the tree, and let it go at that. But this story has to do with that school of decorators who enjoy turning the house upside down with greens inside and out.

A bit of heavy wire is needed to make the garlands of fir which often decorate the doorway entrance, and this treatment, coupled with strings of electric lights, makes a most effective greeting for your guests as they knock on a door, the window glass gleaming clear, and a wreath of holly in the center.

Klamath's mountains do not yield the old English holly, heavily laden with berries, but in our own hills there is a beautiful Oregon grape, an evergreen barberry — berberis aquifolium to the profers—which can be found in excellent condition this time of the year. Now Oregon grape, especially the small shoots of brilliant reds and greens, is marvelous for Christmas wreaths. But—if you use this for your wreaths, don't keep them indoors as the Oregon grape has a habit of dying quickly and curling. The grape loaded with blue-black berries makes an attractive wreath, too.

CONES HANDY
 Another particularly effective combination to put into wreaths is juniper and cedar. Cedar grows profusely in this country and although it takes practically a whole carload for two small wreaths, it is well worth the trouble. Our favorite is the type loaded with the small white flat berries. When you get through working with a wreath of cedar, the floor will look like you've spilled a box of rachel powder all over the place, but it's just the pollen and won't hurt a thing.

Also attractive and easy to find in this section are cones, big Ponderosa pine cones which come with huge green needles, or the smaller pine cones in clusters. Tied with a huge red or green ribbon, or a bow of copper screening, this is as pretty a thing as comes from the woods. The big sugar pine cones (lucky if you get very many) are products of the Oregon woods and highly prized on the east coast as well as the middle west. These cones, fall at this time of year only if a high wind or a busy squirrel takes them from the branches. Otherwise they are available if you can get in a "cutting" where the loggers have laid low the branch of the mighty pine. Three of these huge cones caught with a bright bow, make the cheeriest of door decorations.

Incidentally, if you want to make eastern relatives happy, send a box of greens to them, sufficiently early to give them a chance to enjoy them for a few weeks. Lots of people take down the decorations the day after Christmas. We come from the "take the tree down New Year's day" tribe.

TRADITIONAL TREE
 Going inside the house there is, of course, the Christmas tree, for which there is no substitute. We know some people who came

here from the dust bowl. With them came a small green paper tree, a gay little thing they had used for years. But here they came into this country, rich with evergreens, Shasta firs, lovely trees of all sizes and shapes. They were beside themselves. Finally they settled on a shapely little fir, and for three weeks it graced their living room. They took it down with much sorrow and almost a fear in their hearts that never again would they find a tree so lovely and so gay.

This year the stores seem to have outdone themselves with candles. All sorts of candles, candles like angels, candles like choir boys, candles like Santa Claus, and candles—well, like candles. Best of all, to the mind that likes the old, are tall, slim white candles, fat "plumber's" candles of red which send off a great deal of light, or the lovely soft leaf green candles which are very pretty rising from a ring of greenery and a bright red bow.

MANTELS TABLEAUS
 Mantels may be trimmed for next to nothing. Favorite is the use of pine cones and candles, but lovely is the mantle on which glows from subdued lights the scene of the nativity. Maybe when the little fellows in the family are a bit older and can admire without the loving pat given the animals and shepherds so that they fall over in a heap, this scene can be laid about the base of the tree. The local dime stores have lovely angels in pale pink and blue, shepherds, the Holy Family and the stable.

Christmas tree ornaments this year are definitely "made in America," since we have turned up our noses at Japanese and German made wares. But it is with sincere regret that many of the lovely things made by German craftsmen, such as "flying angels," birds with gossamer wings and other tree trinkets aren't available. American factories are turning out interesting baubles, however, and they are reasonably priced. Our taste runs to the old fashioned green tree with everything in the house glistening from it. If you prefer the sprayed silver, blue, or red affairs, that's up to you and we haven't any suggestions.

FOR THE TABLE
 Table decorations are so varied that never will you find two tables alike. However, as long as we are stressing Klamath grown products, we might offer this—around a mirror place a wreath of cedar, pine, or fir, depending on the size of the table and mirror. At various points lay very small red, green, blue and silver Christmas tree balls, or for dinner, use real small fruits, oiled with olive oil to bring out the color. Small red peppers and limes are always good. So are some of the lowly vegetables like onions, garlic, and brussel sprouts. Just look around, and you'll find plenty.

Juniper trees are simply laden with blue berries. The pungent odor of juniper is offensive to some — "but there's some that likes it." Juniper responds nicely for garlands, wreaths, clusters to tuck in packages and in many, many ways.

WRAPPING IDEAS
 A quick glance at Klamath's stores puts the average package wrapper in a dither. A suggestion, however, wrap in deep green or brown cellophane. Tie with contrasting ribbon and tuck a cluster of pine cones and needles under the bow. You'll be surprised at the pleasure this package gives, especially when sent to a part of the world where pine cones are a treat. Some people we know are tucking hand made corsages of pine needles, incense cedar pods, and cones, to be worn for a long

time after Christmas on the lapel of a suit.
 Now we're all tucked out. Guess we won't get to our greens until next Sunday!

The ancestors of President Thomas Jefferson were Welsh.

Send Gift Packed In Wooden Box

Give a thought to wooden boxes when you plan this year's Christmas gifts. Many things are most sat-

isfactorily packed in the products of Klamath's lumber plants, particularly foods. Potatoes packed in wooden boxes, with a bit of colorful paper to add the holiday touch, make an ideal Christmas gift to send from the Klamath country to distant points.

Boxed apples or pears are other suggestions.

Christmas Council Will Meet Soon

Earl C. Reynolds, secretary of the Klamath county chamber of

commerce, will call a meeting in a few days of the Christmas council.

This group is composed of representatives of various organizations and agencies which participate in the Christmas giving

program in behalf of the underprivileged and the needy. The council has operated for the past two years. Its purpose is to see that Christmas cheer is spread as widely as possible.

Read the Classified page.

SEARS VALUES HELP MAKE A Merry Christmas



KNEE-HOLE DESK
 Christmas Value **17.95**

Here's a gift worth writing home about! A supremely beautiful piece of furniture that's practical, too. A student will welcome it with a whoop of joy! Made with genuine walnut veneer top and front and five convenient drawers.



Assorted Mirrors
5.95

Flawless plate glass top and copper backed and set in graceful, gilded frames. Assorted styles and conventional shapes.

Mattress Ensemble

1. Permaform Mattress With Permaform Edge
2. Box Spring Covered With Matching Tick
3. Genuine Peppercell Zig-Zag Stitched Pad

41.95



From you . . . to you . . . the gift of restful sleeping comfort! Permaform "Body-Balance" construction in 360 coils . . . built and balanced scientifically to give and buoy in just the right places. Inner roll construction, Swiss loom border. Box spring covered with matching tick . . . PLUS a full or twin Sanforized Peppercell protector pad.



CARD TABLES
2.69

Extra heavy construction with steel braced legs and moisture-resistant top. Antique studded and lithographed trim.

Give Him A Smoking Stand



Chrome Trim 2.79
Large Size 1.00

Rich black enamel finish on large metal ash receptacle. Convenient handles. Pedestal type with enameled and chrome finish. Large ash receptacle.

Christmas Specials

Honor-Bilt Specially for You Who Like to "Take it Easy!"

A. DEEP CLUB CHAIR 39.95
 Soft pillowed back, new spring construction for double resiliency. Covered in deep-pile, rayon-patterned velour with silky sheen that retains its freshness.

C. FAVORITE ROCKER 24.95
 No-sag construction, double dovetailed hardwood frame, tapestry, mohair or rayon velour covers in rich colors.

C. PLATFORM ROCKER 16.95
 Honor-Bilt, double-dovetailed frame with no-sag spring construction and same high-quality upholstery as rocker described above.



Hassock 1.39

Gay, simulated leather or hassock in popular floral designs.

LIVING ROOM SUITE



99.95

"HONOR-BILT" BEAUTY

A gift the whole family will be proud of! Luxurious, spacious and invitingly beautiful! Smoothly molded . . . decidedly modern! Big, cushiony upholstered arms . . . backs pillow-shaped for relaxing. Scrolled wood trim on rich velour upholstery. Rich, warm colors!

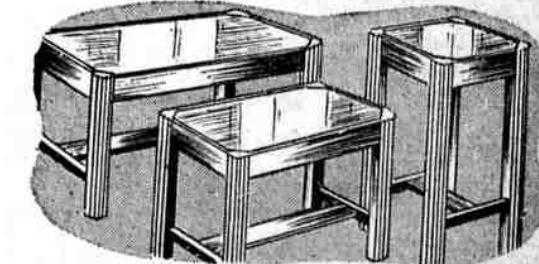
YOU CAN STILL USE SEARS EASY PAYMENT PLAN!

Floor Lamp

To Throw Light on Your Gift Problems

10.95

Seven-way light with three-light indirect reflector, 3 candles and night-light in opaque onyx-type base. Choice of ivory or bronze finish on heavy cast metal base and arms. Rayon lined, pleated silk shade.



ASSORTED TABLES

• Coffee Table • Handy Lamp Table • Convantion End Table
 Gracefully designed modern occasional tables to harmonize with any decorator scheme. All hardwood construction with walnut finish. All types complete with fitted glass tops for protection and enduring beauty.

4.95 each

SEARS, ROEBUCK AND CO.

133 So. 8th

Dial 5188

WHY ANN MILLER HANGS UP HER CHRISTMAS STOCKING . . .

(Secret revealed by *Armine* Stylist to the Stars)

Why? To show Santa that she wears Hollywood, of course! Because Ann is content only with these vapor sheer hose, styled by Armine to make her legs look slimmer, more glamorous. Hollywood . . . perfectly fashioned in three style-right lengths, promises you the same leg beauty that makes stars like Ann Miller famous. Hollywood stockings are practical, too! Armine's exclusive, high twist "Creme de Chine" process assures greater snug retention—at no greater cost. So . . . this Christmas, take a tip from Ann . . . spread the word that you've gone Hollywood. Treat your friends, too, to a gift "fit for the stars."



Ann Miller appearing in "The Day After Tomorrow" a Columbia Picture.

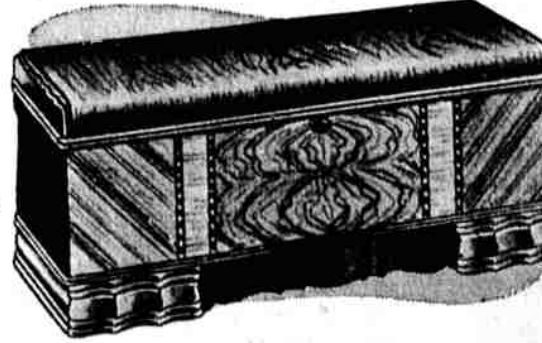
Insist upon **HOLLYVOGUE** "I promise you a perfect fit," says Armine

Silk or Nylon Stockings

Priced from \$1 to \$2.95

MODEL SHOE STORE

HOW STYLED BY ARMINE FOR HOLLYWOOD STARS AND YOU!



ROOMY CEDAR CHEST

- 3-Section Removable Tray
- Matched Walnut Veneer
- Honor-Bilt Marquetry Trim

Every woman wants a cedar chest to keep her very special "treasures"! This one has beautifully matched walnut veneer top, front and end panels with Oriental wood and Marquetry inlay trim. 46-inch size.

24.95

48-INCH CEDAR CHEST—Same Honor-Bilt chest as above in larger size. **27.95**