

OLD MINER'S CABIN MAY BE PUT IN PARK

Members of the city park board, in regular August session Tuesday, discussed plans for moving the old prospector's cabin from near Bray to a place in Moore park. The secretary was requested to contact both the Oregon and California highway commissions in the event the cabin is to be brought here intact.

It is hoped by members of the board to create a homestead's unit in the park and add other picturesque buildings in that area.

A general discussion of improvements in the park which the board hopes to accomplish in the future, took up the major portion of the afternoon. A few of the projects are, put entire park entrance in lawn, construct museum building, plant groves of quaking aspen and maple trees, plant lupin and other wild flowers on the hillsides, plant rhododendrons and vining maple, gather up all old logging equipment available and place in natural setting in the park, construct band stand, and small community building for use as social gathering point and club meetings.

The improvement of the parking strip along Alameda street in rear of the high school athletic field, to be used as a parking place for cars, or a park strip, was also brought up for discussion. No action was taken.

Murder Charges Face Four Youth

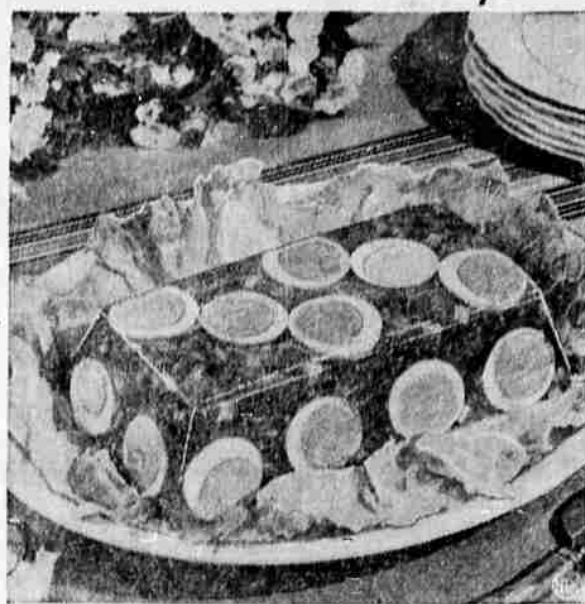
OAKLAND, Calif., Aug. 8 (UP) Four east bay boys arrested in connection with the hold-up and killing of William Hanna, Hayward grocer, Thursday night were charged with murder in a complaint filed by District Attorney Ralph Hoyt of Alameda county.

Named in the complaint were George Lingenfelter, 13, Warren Brill, 14, Walter Lee, 15, and Everett Washburn, 16. Lee and Washburn were captured in Utah after riding freight trains in their flight eastward. They assertedly confessed their part in the crime and implicated Lingenfelter and Brill who also confessed, police said.

The gain in motor vehicles registrations in the period from 1933 to 1940 exceeded 7,500,000 an amount greater than the total registrations in the United States in 1919.

Nearly one-half of the dairy cattle in the United States are Holsteins.

Cold Main Dishes Certain To Please on Summer Days



Savory corned beef loaf for hot weather dinner.

A cold fish or meat dish, prepared earlier during the cooler hours of the day, fills the protein needs of the menu and saves hot kitchen work. The recipes given below show you how to do it with food values and appetite appeal. Also, for very little cost.

SAVORY CORNED BEEF LOAF (Serves 6 to 8)

One-fourth cup cold water, 1 1/2 cups hot tomato juice, 1 envelope plain unflavored gelatin, 1 teaspoon salt, 1 teaspoon grated onion, 2 tablespoons lemon juice, 1 teaspoon Worcestershire sauce, 1 1/2 cups corned beef (canned or fresh) cut into small pieces, 1 cup chopped celery, 3 hard-cooked eggs, sliced, 1 cup chopped pickle relish.

Soften gelatin in cold water and dissolve in hot tomato juice. Add salt, onion and Worcestershire sauce. Stir well. Rinse loaf mold out with cold water or rub

Serve with mayonnaise or other dressing. This recipe fills a 5-cup loaf mold.

Ellen Ballou, Canadian pianist, contributes two uncooked fish specialties for summer eating pleasure. She's almost as noted as a cook as she is as a musician.

FISH ARGENTINE (Serves 4 to 6)

One pound cod or other large fish steak, lemon juice, salt, 3 onions, sliced, 1 green pepper, chopped fine, boiling water.

Wash fish steak well. Cover liberally with lemon juice and salt. Stand in cool place for 2 hours. Combine chopped and sliced vegetables. Cover with lemon juice. Pour boiling water over them. Stand for 5 minutes, then drain off water. Chill vegetables. Just before serving fish steak, cover with the mixed vegetables.

MENU

BREAKFAST: Canteloupe, boiled eggs, whole-wheat toast, marmalade, coffee, milk.

LUNCHEON: Canned bean salad with sliced tomatoes, hot biscuits, cheese, preserved fruit, cookies, tea, milk.

DINNER: Savory corned beef loaf, watercress garnish, creamed potatoes, buttered carrots with parsley, canned grapefruit sections with sugar, lemon sponge cake, coffee, milk.

with mineral oil. Garnish bottom of mold with slices of hard-cooked eggs and cover with a little of the gelatin mixture. Chill in refrigerator until set. Cool remaining liquid until mixture begins to thicken and then fold in corned beef, celery and relish. Line sides of mold with sliced eggs, then fill with meat mixture. Chill until firm. Unmold onto platter and garnish with watercress or other greens.

Child Saves Tot From Ocean Waves

LAGUNA BEACH, Calif., Aug. 8 (AP)—A big wave caught Valerie Perkins, 2, who was wading on the beach, and swept her to sea.

Her brother, Fred, 8, although he couldn't swim, plunged after her and managed to hold her head above water until help arrived.

"She's got so much longer to live than I have," Fred told his parents, Mr. and Mrs. Frank T. Perkins of San Bernardino. "I couldn't let her drown."



REDUCE

The Easy, Safe HOLLYWOOD WAY!

There is no reason why you should be fat . . . when it's so simple to reduce the Hollywood Way. Just include two slices of Hollywood Bread with every meal in place of fattening foods. Hollywood Bread is lower in calories, higher in protein, and richer in minerals. No fats are added—it is baked without shortening. Start reducing NOW. Buy a loaf of Hollywood Bread today and you will soon wonder why you were ever overweight.

BAKED EXCLUSIVELY BY

Fluhrer's

NOW ON SALE AT YOUR GROCER

HOLLYWOOD BREAD MAKES DELICIOUS TOAST

★ For a real treat, serve HOLLYWOOD TOAST. The toasting brings out all of its goodness—HOLLYWOOD TOAST has persuaded many a man to take his time and eat a satisfying breakfast. Try your favorite sandwich on HOLLYWOOD.



There really is an easier way to get **FRESH** vegetables!

Of course there is! **GET TRULY FARM-FRESH**

VEGETABLES

AT YOUR SAFEWAY

Safeway is pioneering the sale of all produce by WEIGHT — the only fair way. A pound is always a pound and whether you buy a little or lot you pay for only what you get and no more. Select personally just what you wish — and pay by weight. Money back if you're not completely satisfied.

SAFEWAY

Produce Prices for Saturday, August 8

Prices Are Effective Friday, Aug. 8 Thru Monday, Aug. 11 Inclusive

Sugar
White Satin Best 10 Pound Bag
58c
25-lb. bag \$1.44
100-lb. sk. \$5.60

Peaches
Extra fancy Elbertas for canning.
Crate . . . 79c
Hale Peaches
Fancy quality, all wrapped.
Crate . . . 98c
Large Lugs 23-lb. Net Wt.

Pickles
Kerr's, Dill 29c
5-lb. jar
Kerr's, Sweet 59c
5-lb. jar

Silk Toilet Tissue
Rolls
3 for 10c

CORN
Del Monte, Cream Style No. 303 Tins
3 for 29c

AIRWAY
THE ARISTOCRAT OF THRIFTY COFFEES
Lb. Bag 15c 3-lb. Bag 42c

Tomatoes . . . lug 69c
Large lug, 28-lb. Net Weight

Watermelons . . lb. 1c
Kingsburg Klondike, extra sweet red-meat melons

Honey Dew Melons, lb. 3c
CASABAS—For melons dripping with honey-sweet juice. Try these.

HEINZ SOUPS ASSORTED Except Clam Chowder 16-oz. Can 12c
PORK & BEANS VAN CAMP'S For quick tasty meals No 300 can 9c
FELS NAPHTHA SOAP 10 bars 43c

Tomatoes Gardenside, No. 2 1/2 tins. 3 for 29c

Pineapple Sea Rock, No. 2 1/2 tins. 2 for 29c

SUPRE SOAP 24-oz. 50-oz. 17c 33c

LUX FLAKES New Quick LUX 12 1/2-oz. Pkg. 22c

CANNING NEEDS

M. C. P. PECTIN 3 PKGS. M. C. P. PECTIN 51c Value 27c
1 Can M. C. P. Lemon Juice

Ball Mason Jars, quarts, case, 83c
Economy Jars, quarts, case, 93c
U. S. Reg. jar rubbers, pkgs., 3 for 10c
Kerr Mason Jars, qts., case, 83c
Kerr Economy Caps, dozen, 2 for 35c
Kerr Economy Clamps, pkgs., 2 for 23c

FRUIT JARS, close out price Ball Glass tops, quarts, case, 59c

CHERUB MILK, tall cans 4 for 32c
SALT, Morton's 8 pound bag 18c
TOMATO JUICE, Stokely's, 46-oz. can 19c
GRAPEFRUIT JUICE, Town House sweetened or unsweetened, 46-oz. cans 19c
PEAS, Sugar Belle, No. 2 can 12c
SPINACH, Emerald Bay, No. 2 1/2 can 25c
MARASCA CHERRIES, 5-oz. bottle 10c
GRAPEFRUIT, Dr. Phillips, No. 2 can 10c
FRUIT COCKTAIL, Sundown, No. 1 can 10c
PEARS, Highway, No. 2 1/2 can 2 for 29c
ROYAL CROWN COLA, 12-oz. bottles 6 for 25c
DOMESTIC SARDINES, Nepeco, No. 1/4 can 5c
MINCED CLAMS, Warrenton, No. 1/2 can 19c

Top Quality Meats

Sirloin Steak . . lb. 31c

Rib Steak lb. 31c

Ground Round Steak . . . lb. 27c

Ground Beef 2 lbs. 29c

Short Ribs lb. 15c

CRISCO 3-lb. can 59c

Sno'drift Shortening 3-lb. can 58c

ROYAL SATIN Shortening 3-lb. can 49c

Hams Cascade Skinned Lb. 33c
Short shank, tenderized.

Fryers Colored, pound 29c

Meat Assorted Lunch, pound 29c

Bacon Sliced, Rind off, pound 29c

Sliced Halibut lb. 25c
Sliced Salmon lb. 29c
Filet Sole lb. 25c

Pork Steak . lb. 25c
Pork Chops . lb. 35c

Every cut, every purchase must meet with your complete approval or your money back—That's your assurance of the finest of meats at Safeway—always!

VINEGAR, Pure Cider, 1-gal. jar 20c (Plus 10c bottle dep.)

SANDWICH SPREAD, Lunch Box, 16-oz. jar 23c
32-oz. jar 37c

TANG, Cudahy's prepared luncheon meat, 12-oz. can 2 for 45c

WALDORF TISSUE 4 for 19c

BAKING POWDER, Calumet, 16-oz. can 15c

BAKING POWDER, Clabber Girl, 32-oz. can 20c

HEINZ BABY FOODS, 4 1/2-oz. cans 3 for 20c

JELL WELL Gelatins and Puddings 3 pl. 11c

CRESCENT MUSTARD, 32-oz. bottle 15c

MONSTER GUM DROPS, 1-lb. pkg. 2 for 23c

SWEDISH MINTS, 1-lb. pkg. 15c

RALSTON RY-KRISP, 13-oz. pkg. 15c

GOLD MEDAL CORN KIX, 7-oz. pkg. 2 for 21c

WHEATIES, 8-oz. pkg. 2 for 21c

Beer Brown Derby, 11-oz. stow'ays 3 for 29c
12-oz. cans 3 for 29c

Flour Harvest Blossom, 49-lb. sack \$1.29

Sodas Salted, New Leader, 2-lb. pkg. 16c

Cigarettes Kool, pkg. 2 for 25c
Carton \$1.25

Peas Gardenside, No. 303 tins 4 for 29c

Peas No. 2 tins 2 for 25c
Del Monte, Early Garden

Marshm'low's 1-lb. carton 10c
Fluffiest

Tuna Fish White Star, No. 1/4 can 17c

Tuna Del Monte No. 1/4 can 2 for 29c

Honey Stewart's, 5-lb. can 33c

Peanut Butter Real Roast, 2-lb. jar 25c

Corn Flakes Albers, regular package 5c

Pork & Beans Heinz, 12-oz. tin 7c
18-oz. tin 10c
Kidney, Boston, Tomato Sauce, or Vegetarian.