

# Spring Construction Program Proceeds Here

## PROGRESS MADE IN SIMPLIFYING PLUMBING WORK

Notable progress has been made in recent years in the simplification and standardization of plumbing fixtures and piping materials and in the setting up of grading rules to protect the purchaser, says the Plumbing and Heating Industries bureau.

Certain standards of performance have been set up for plumbing fixtures. The standards set up by the industry provide that a siphon jet closet bowl must pass a solid ball 2 1/2 inches in diameter and a reverse trap bowl, a solid ball 1 1/2 inches in diameter.

Similarly the interests of the purchaser of enameled cast iron plumbing fixtures are protected by rules which provide for the thickness of the iron casting as well as the thickness and quality of the coating of the enamel. In this way, the purchaser is assured of a sturdy, rigid fixture with a coating of lustrous porcelain enamel firmly fused to the iron.

Less than ten years ago there was no general uniformity with respect to the length of the bathtubs. Today staple bathtubs are made in four sizes, namely 4 1/2 feet long, 5 feet, 5 1/2 feet and 6 feet. All enameled cast iron lavatories and vitreous china lavatories are 31 inches from the floor to the rim of the fixture. Faucet and waste punchings of all plumbing fixtures have been standardized to afford maximum utility and sanitation.

**It Pays to Get the Best!**

Come in and see the NEW 1940 PATTERNS

**Imperial**

Washable

**Wall Paper**

Exclusive Distributors

**General Paint Store**

515 Main Ph. 2520

## FHA LOANS

For ANY TYPE of Home Improvement

- ★ Building
- ★ Painting
- ★ New Screens
- ★ New Roof
- ★ New Walks
- ★ New Siding
- ★ Cabinet Work

Or any improvement you desire to make on your home

**PAY While You Enjoy the Results**

**A loan of \$100 for one year costs only \$8.77 per month, including interest**

Call us for free estimates on any type of work you want done.

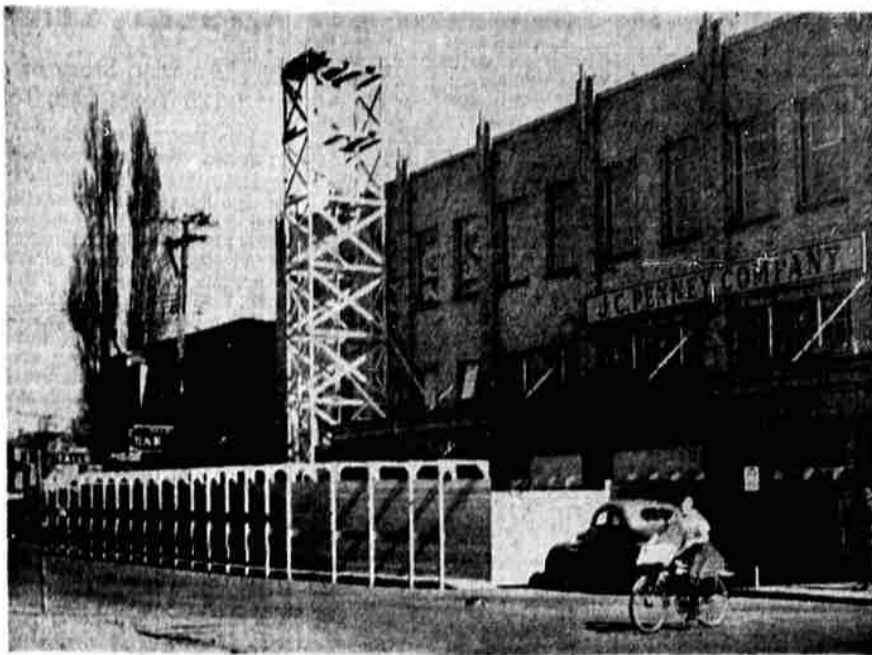
REMEMBER—We make building or remodeling easy by helping you plan and helping you finance.

**Klamath Valley Lumber Co.**

S. 6th—Just Over the Viaduct

Phone 888

## Downtown Construction Development



Work started this weekend on important construction at the J. C. Penney store building, Eighth and Main streets. It will include the addition of another floor and general remodeling and streamlining in the interior of the big commercial structure.

## NEW YORK CITY HOUSING PROJECT LEADS PLUMBING

With 12,275 apartments equipped with 50,000 plumbing fixtures and 140,000 brass fittings, the Parkchester housing development in New York City, now under construction, is the world's largest single plumbing job, according to the Plumbing and Heating Industries bureau.

If placed side by side, with minimum permissible space between, the fixtures would line a wall 32 miles long. More than 200 carloads of iron were used in the manufacture of the cast iron enameled plumbing fixtures.

## CONDITIONED WATER IMPORTANT AS AIR

Conditioned water is as important as conditioned air, according to the Plumbing and Heating Industries bureau. Hard water is injurious to skin, hair, food and clothing. In fact, the bureau reports, a water softener saves more than it costs during the time you are paying for it. Soap and cleanser bills, as well as plumbing and heating repair bills are reduced one-half, and annual expenditure for clothing is reduced one quarter by the use of soft water for all domestic purposes.

## ATTRACTIVE AND INEXPENSIVE

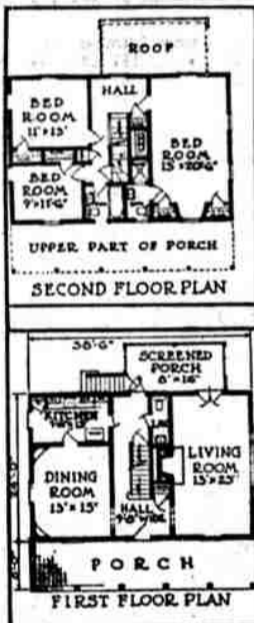


EVERYONE likes the long, columned front porch of the Southern Colonial type home, which is familiarly referred to as "like Mount Vernon." Many people who would build a house of this type hesitate because of the feeling that such a home is excessively costly.

This need not be true. This house is a six-room home of average size, so designed that the columns and the front porch look well, despite the fact that the house is less than 40 feet long.

Because the roof of the main house covers the porch, because the house is built of wood, because the garage is in the basement, and because the house is a perfect rectangle its construction cost is quite reasonable. Very beautifully finished, this house should not exceed \$10,000.

For further information write the National Lumber Manufacturers Association, 1337 Connecticut Avenue, Washington, D. C.



## Method for Case-hardening Concrete Receives Interest

Immediate application in garden pools and other uses is fore-

See Us About A LOT • Ask Us About An Equitable LOAN

Chilcote & Smith  
111 N. 9th Phone 88

ening" concrete which was developed in cooperation with the U. S. bureau of reclamation.

The method consists of lining concrete forms with absorptive insulating boards. Special boards for this purpose, developed by Fir-Tex engineers, are being used by the reclamation bureau on the Parker dam project. Field tests have been completed on the downstream face of Grand Coulee dam. The product is being introduced commercially throughout the country.

The new construction method gives concrete greater resistance to water passage, according to the Fir-Tex engineers.

Also, the process will be used on interior and exterior walls to provide a fine-textured surface that will not need to be ground, stoned, or coated with the conventional plaster.

The use of absorptive form

Everybody has a right to aspire to the presidency.—Candidate James A. Farley.

## Modernization



NEW HOMES FOR OLD

You've seen in home magazines what can be done with outdated, inconvenient houses . . . An alteration in line, exterior changes, interior improvements can work wonders . . . And also raise the resale value of your home. Let us plan with you to change your old home into a new one . . . a smart one!

**FARMERS LUMBER CO.**  
1436 Klamath Phone 317

## REFRIGERATION & ELECTRIC SERVICE CO.

Our Own New Building Now Being Completed

155 East Main — Phone 2253  
Klamath Falls

We Service All Makes of Refrigerators Commercial and Domestic

Mark Smith

Refrigeration Engineer

## ADDITION TO PENNEY STORE STARTED HERE

Construction started on the big expansion program of the J. C. Penney company here Thursday, with workmen fencing off working space on Eighth street and building outside elevators for the third floor addition.

The first phase of the construction program will not affect the retail operation of the Penney company other than closing the Eighth street entrance and concentrating all stocks in the basement, main, mezzanine and second floors, was the word of Sid Elliot, manager.

The expansion program will involve an expenditure of more than \$25,000 when the work is entirely completed. E. B. Brosthouse is the local contractor. The work will include the addition of an entire full size floor above the present building, and extensive remodeling and modernization of the present floors.

Work on the present floors will not be started until the new floor is completed. At that time several departments will be moved to the new unit, although the final use of the new floor will be for warehouse and company office space.

"We'll be merchandising great guns while the work is going on," Elliot said. "All the spring and summer merchandise we had previously contracted is coming in on schedule. With all the stock from our penthouse warehouse now moved into the regular floors . . . well, we'll just have to keep selling it out, that's all."

## WATER DISTRIBUTION IS MODERN MIRACLE

A ton of water delivered to your house for little more than the price of a postage stamp. A ton of waste water hauled away from your house for less than the price of a stamp.

This is the modern miracle of water distribution and sewage disposal which is part of the everyday life of about 80,000,000 Americans, says the Plumbing and Heating Industries bureau.

Eighty million people obtain their household water supply from more than 12,000 public water supply systems. Approximately 37,000,000 people are provided with filtered and chlorinated water and another 26,000,000 are provided with partially purified water.

Sewage facilities have been provided for approximately 72,000,000 people in the United States.

lining "case-hardens" the surface of the concrete by removing trapped air and excess water. Eliminated are the unsightly pits which have hitherto been virtually unavoidable on formed concrete. The new method not only improves the appearance but also increases the resistance to abrasion, weathering and chemical attack.

## ENGLISH PLUMBERS HAVE LONG JOB AS RESULT OF FREEZE

English plumbers are going to be busy until mid-summer repairing the water pipes which burst during the severe winter, according to the Plumbing and Heating Industries bureau. In the city of Sheffield, between 20,000 and 25,000 water pipes burst. Master plumbers have asked the government to exempt young journeymen plumbers from military service until they can catch up with their work.

## COPCO REPORTS PUMP PROJECTS

Spring weather and the beginning of the cultivation of land has brought several new pumping projects in the Klamath basin, according to the California Oregon Power company. Installation of new pumps has given Copco crews work in several sections installing power lines.

A 10-horsepower pump has been installed by John Kandra Sr. at Adams Point, which will be used in pumping water from the "D" canal for the irrigation of 45 acres.

R. P. Oliver, at Little Wocus marsh, on the west side of Upper Klamath lake, has installed another 10 horsepower motor for drainage purposes.

Mary M. Johnson of Spring lake is installing a seven and one-half horsepower pump for irrigation.

T. B. Watters and Robert Graham, at Graham's marsh, Shady Pine, are using a 10 horsepower pump for irrigation and drainage.

**WOOL MARKET**  
BOSTON, April 13 (AP-USA)—The tone of the wool market in Boston showed a little improvement during the past week.

Sales of greasy combing domestic wools had only a very moderate increase and this was confined to a few lines, but inquiries were distinctly more numerous than in the previous week. Several lines of wool suitable for manufacture on the wool system received a substantial increase in the volume of business at firming prices. Prices were steady to slightly lower on graded combing greasy bright fleece wools at 33 to 34 cents for fine delaine, 34 to 36 cents for half bloods and 35 to 37 cents for three eighths and quarter bloods.

## 20-YEAR LOANS

Residence or Business

Property Monthly payments \$6.60 per \$1000 of loan on 5% schedule

**HOWARD BARNHISEL AGENCY**

112 So. 8th Ph. 1050

Authorized Mortgage Loan

Solicitor for

The Prudential Insurance

Co. of America

(Home Office, Newark, N. J.)

## DOLLAR VOLUME IN PERMITS OF 97 CITIES UPS

SAN FRANCISCO, April 13 (AP)—Dollar volume of building permits in 97 Pacific coast cities during March rose 47 per cent above February levels and 5.4 per cent above the level of the corresponding 1939 month, H. R. Baker and company, investment banking firm, reported today.

The survey showed 15,880 permits were issued in March with a total value of \$32,894,537 as compared with a total value of \$22,373,444 for February and \$31,198,111 for March, 1939.

All states included in the survey reported increases over February levels.

The 25 leading cities were Los Angeles, San Francisco, Sacramento, Oakland, Seattle, Portland, San Diego, Denver, Vancouver, B. C., Long Beach, Burbank, Santa Barbara, Santa Monica, Salt Lake City, Glendale, Spokane, South Gate, Pasadena, Inglewood, San Mateo, Beverly Hills, Boise, Alhambra, Fresno and Tacoma.

## BUILDING PERMITS FOR TWO HOMES ISSUED IN CITY

Two new residences in Klamath Falls were authorized by Building Inspector Harold Frayne on Friday.

H. E. Roskamp, contractor, was given a permit to construct a \$5000 residence at 2037 Fremont street, lot 14, block 39, Hillside addition.

A second permit was given Ralph J. Wiese to construct a \$3000 residence on lot 20, block 305, Darrow addition.

## Wallpaper

Our grand new "Unitted" wallpaper is guaranteed Wash Tested

Its beauty is unchanged by repeated washings.

Style Tested

Famous decorators check every pattern on walls. Our selection of Unitted wallpaper equals the best anywhere.

**GOELLER'S WALLPAPER & PAINT STORE**  
230 Main Phone 1845  
Pittsburgh Paints

## FULLER PAINTS Sale

APRIL 12 THROUGH APRIL 27

Your big money-saving opportunity! Stock up now for Spring painting. No limit on quantities.

**EXTERIOR VARNISH**

Fuller's. Weather-protects front doors, garden furniture, etc. Flat gives two coats. Reduced to 1.47 qt.

**82¢ PT.**

**1 21 QUART**

**HOUSE PAINT**

Fuller's Pure Pigment House Paint. Beautiful, durable, and easy to use. The best for the money.

**2 88 GAL.**

**PORCH PAINT**

Fuller's Porch & Deck Paint. Glossy, porcelain-like. Stands hard use. Waterproof. A quart or two will brighten up your porch and steps. Reduced to 1.86 1/2 gal. 3.18 gal. **1 03 QT.**

**SWAN LAKE MOULDING CO.**  
So. 6th St. Klamath Falls Ph. 759

## ST. FRANCIS PARK



This New Home OPEN for INSPECTION Sunday April 14 11 a. m. to 4 p. m.

This newly constructed, modern home is located in St. Francis Park, the suburban district of distinctive small residences. It has five rooms, with a clever Pullman kitchen—two bedrooms, large living room, dinette, service porch with cement floor, attached garage with cement floor. Cedar closets in the bedrooms. Fireplaces. All walks are in, trees have been planted. The lot is large, measuring 75 by 140 feet.

Total price, \$3750—on reasonable terms.

Built under FHA specifications.

We can help you finance this home—reasonable down payment

**Geo. S. BUSCO**

Tract Office, St. Francis Park

Phone 2210