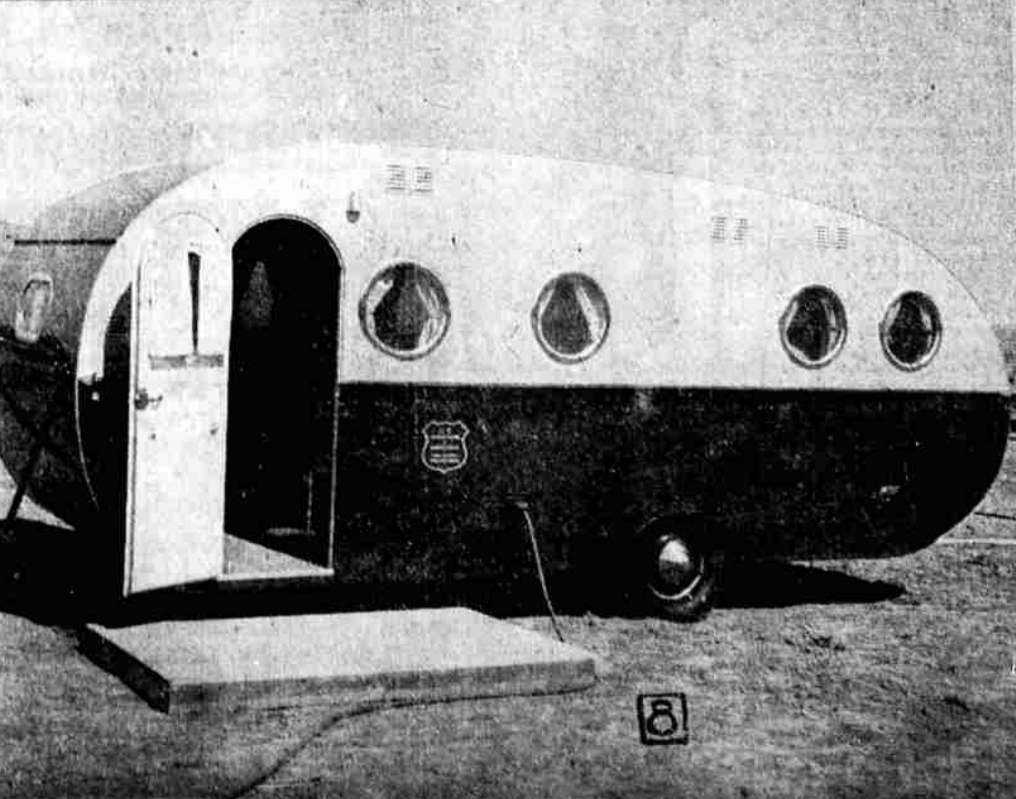
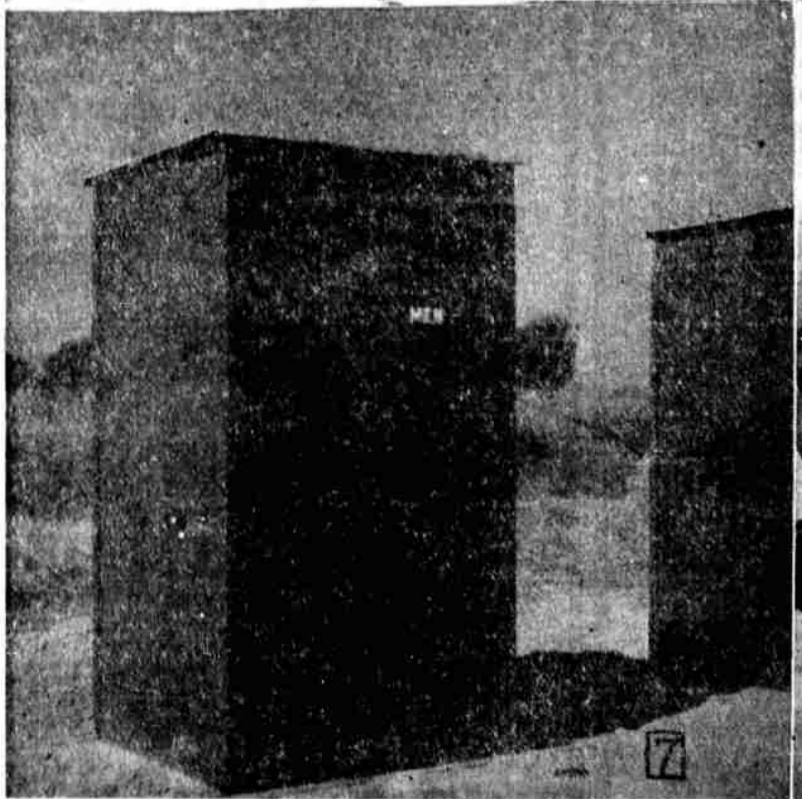
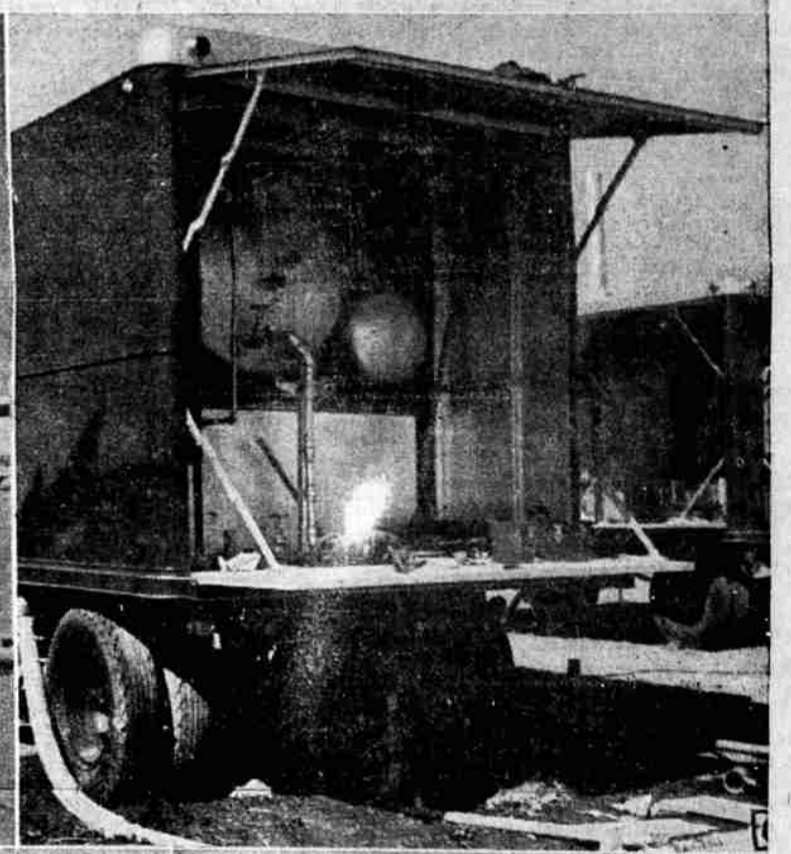
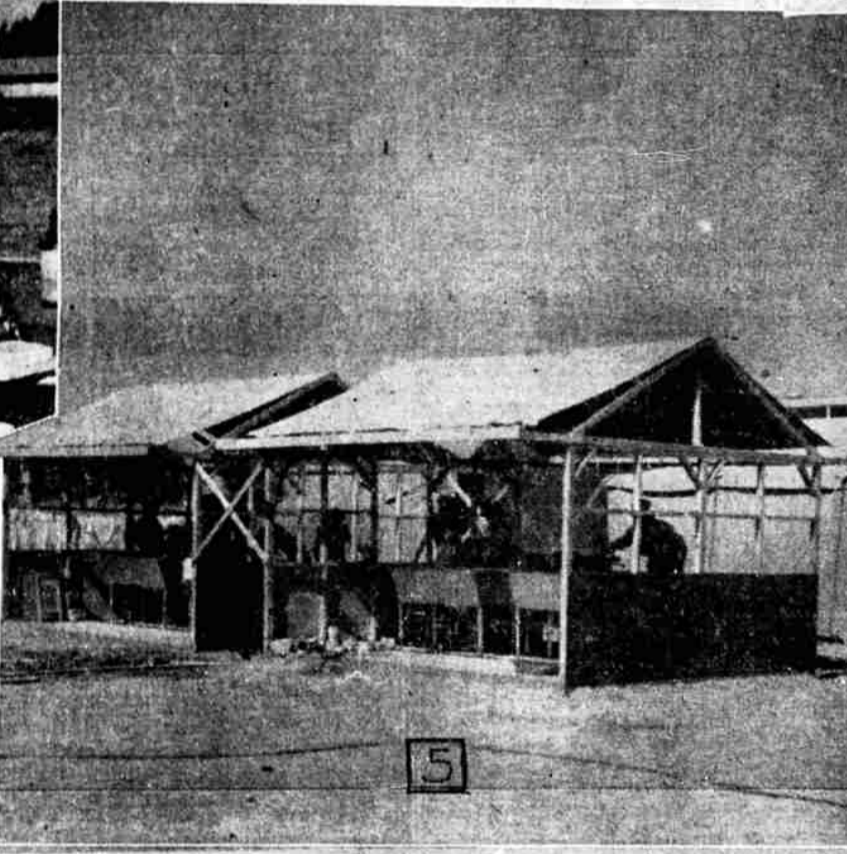
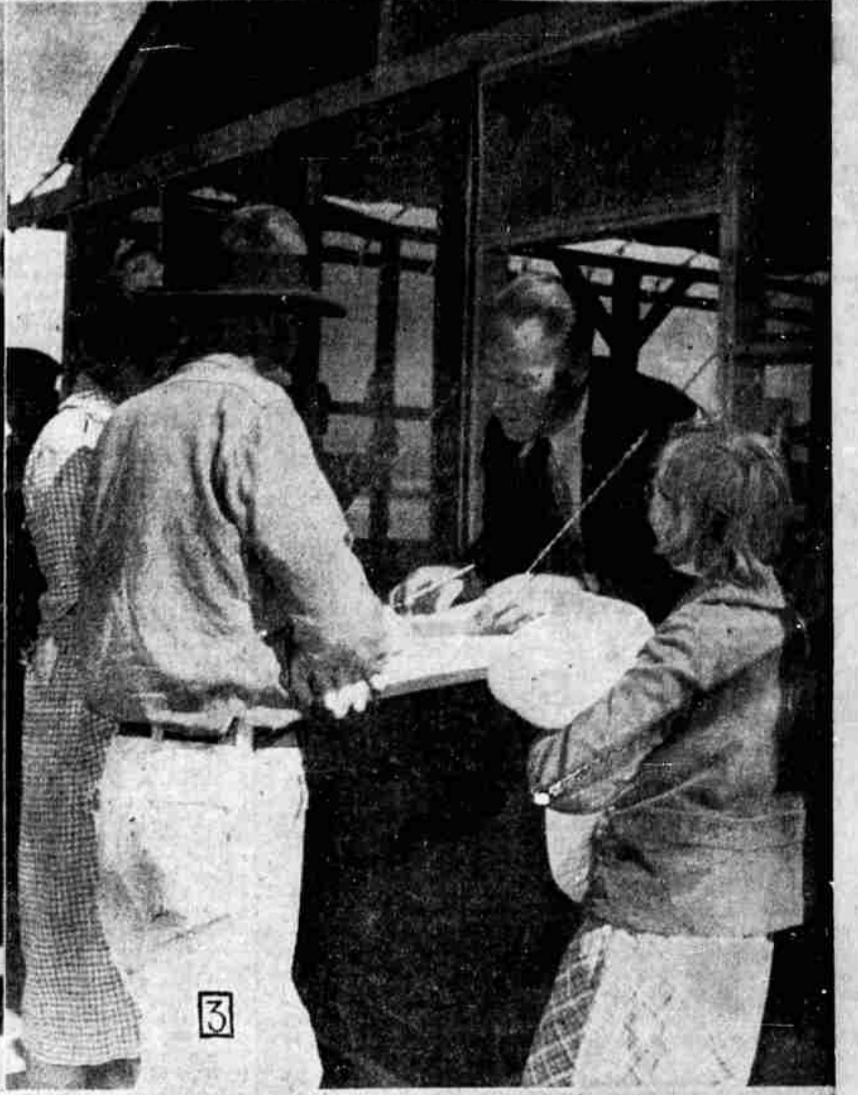
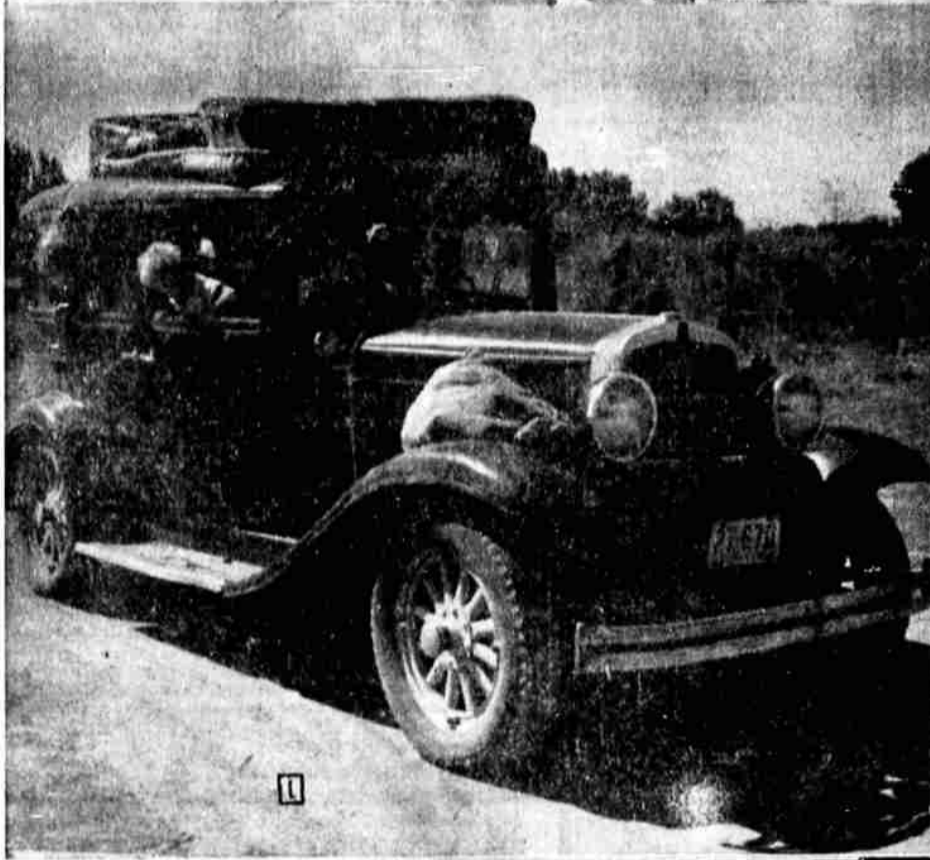


# MOBILE MIGRATORY WORKER CAMP -- MERRILL, Ore.

The Evening Herald and Klamath News WEEKEND Photorial



THIS Photorial report covers the Mobile Migratory Worker Camp unit spread out at the edge of Merrill for the potato harvest. This camp, one of four on the road under the farm security administration of the federal government, "follows the harvest" to provide proper sanitation and living conditions in areas where the crop workers gather for a month or so each year. The pictures:

1 and 2—Clarence C. Curtis of Boise, Idaho, Mrs. Curtis and their six children were the first family to register at the Merrill camp. Fourteen years a farmer, Curtis and his family have been forced to follow seasonal agricultural work during the past few years, having arrived at Merrill from Nevada and Idaho.

3—James Collins, manager of the Merrill camp, registers Curtis, getting a

record of his past employment, state of origin and other information. Curtis in turn signs an agreement to abide by the regulations of the camp. He will pay seven cents a day into the camp fund for use of a tent platform and all of the camp facilities.

4—Every day is wash day at the laundry room.

5—Laundry and shower facilities are among the most popular in the camp. Sixteen standard laundry tubs with plenty of hot water are provided. Both the men's and women's shower units have 15 showers each.

6—These two portable units supply the camp with water and power. The trailer in the foreground has the complete water pressure system while the trailer in the background has a heavy diesel power generator and water heating unit.

7—An ample number of modern sanitary toilets are within easy access of tents.

8—A child welfare and first aid clinic is established in this trailer. A registered nurse resides in the camp and a local doctor calls each day to take care of emergencies and infectious diseases as well as conduct a weekly health examination of the camp.

9—Tents are pitched in orderly rows over sanitary wooden platforms within easy access of sanitary and central camp facilities.

Additional camp facilities include a large community tent for camp meetings, recreational activities, dances, church services and kindergarten, and several tents for isolation purposes.