

LOCAL BRANCH OF SKI CLUB TO NAME OFFICERS

Officers will be elected at a meeting of the Klamath Falls unit of the Crater Lake Ski club in the chamber of commerce rooms Wednesday night.

All members of the ski club and any others interested in

OUR GROWTH TELLS THE STORY

4% (Current Dividend)

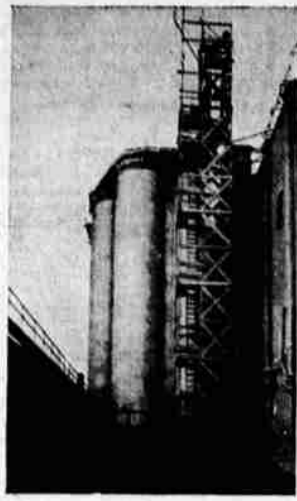
First Federal Savings and Loan Association of Klamath Falls

111 No. 9th St. Phone 376

Members of Federal Savings and Loan Insurance Corp.

Revolutionary Elevator

In line with its policy of keeping ever in the forefront of progress in its industry, A. Schilling and company has under construction at its San Francisco plant an imposing six unit reinforced concrete storage elevator rising the equal of seven stories into the air.



Built by a continuous construction process, the structure is being cast all in one piece. In both design and method of construction it is the first of its kind for coffee storage.

An ever-increasing demand for Schilling coffee has made necessary this facility for storage of green stock to supply the battery of coffee roasters. In construct-

Klamath winter sports were urged to attend.

A nominating committee has been appointed. Members are Ed Hill, Rudy Jacobs and Jerry Thomas. Nominations also can be made from the floor.

Last week's first fall meeting of the club drew a good attendance. It was decided then to postpone elections for another week so that even more might be present to make it as representative a gathering as possible.

BOARDING HOME CARE GIVEN 20 IN SEPTEMBER

Twenty Klamath county juveniles lived in accepting boarding homes in September, according to the monthly report of Mrs. Ethel Wilson, county juvenile officer. Of this number, the state met the expense of 12, parents paid for four, two received board free and the county paid for one.

The boarding home program has been underway for several months. Mrs. Wilson said it is working out effectively in meeting problems of home and care that occasionally arise.

In September one juvenile was held in the county jail four days. Ten were detained a total of 44 days elsewhere in the city.

The juvenile officer made seven trips in fulfillment of her duties. Circuit court hearings were held for the following reasons: dependency, 1; delinquency, 5.

There are now 65 juveniles from Klamath county under custody of state-aided institutions. Three were admitted in September. Twenty-six Klamath county juveniles are on parole from state-aided and state correctional institutions.

Mrs. Wilson made three talks to freshmen girls at the high school and spoke once on juvenile work to the Shasta grange. Twenty-three new cases were

referred to her in the month and three old ones were reopened.

OBITUARY

JOHN MARTIN LONG

John Martin Long, a resident for the past 18 years, passed away at his late residence in this city Tuesday morning, October 11. The deceased was a native of Bostic, N. C., and was aged 54 years, 5 months and 15 days when called. He is survived by his wife, Elizabeth M., and two sons, Jack and George, all of this city; four brothers, Nivens and Tom of Forest City, N. C., Charles of Charlotte, N. C., and Jesse of Morgantown, N. C.; five sisters, Mrs. A. C. McCurrey and Mrs. O. L. Melton of Bostic, Mrs. J. E. Hawkins of Gastonia, N. C., Ethel and Lola, also of North Carolina. Mr. Long was a member of Hollis lodge No. 535, A. F. & A. M., Hollis, N. C., Calvary Commandery No. 16, Knights Templar of this city, and Hillah temple, AAOONS, Ashland, Ore. He remains rest in Ward's Klamath Funeral Home, 925 High street, where friends may call. Notice of the funeral arrangements will appear in this paper later.

Hail to the California boy who has invented an alarm clock that turns itself off, starts the radio, and makes the breakfast toast. Now if it'll only go to work!

MODERN WOMEN

Need Not Suffer monthly pain and delay due to colds, nervous strain, exposure or similar causes. Chastity-belt Diamond Brand Pills are effective, reliable and give Quick Relief. Sold by all druggists for over 30 years. Ask for GICHESTERS PILLS "THE DIAMOND BRAND"

LOCAL STUDENT'S PAPER TO BE READ OVER OSC STATION

A paper on the Klamath country, written by Jerry O'Callaghan, Herald-News correspondent at the high school, will be read over KOAC, the state college station, on Friday at 3:30 p. m.

The paper was prepared under the auspices of the English department of the high school. It was invited by the extension department of the University of Oregon, and young O'Callaghan was chosen to prepare it.

ASSAILANT GIVEN BRIEF JAIL TERM

William Billings of Myrtle Point is serving out a \$5 fine

levied by Justice W. B. Barnes on an assault and battery charge. Officers said Billings struck Everett Kepley, 1748 Menloway, on the head with a pint bottle. The altercation occurred at a nearby entertainment establishment.

What we need in America is an open season on politicians, crope hangers, and prophets of doom.—L. J. Taber, master of the National Grange.

Phone 284 for **Guaranteed Radio Service**

- Latest Test Equipment
- 2 Trained Service Men
- 25¢ Trade-in Allowance on Your Old Tubes

UHLIG'S
1026 Main

MONTGOMERY WARD

"So Complete

YOU WON'T HAVE TO BUY A THING EXTRA

FOR ONLY \$8 DOWN

Complete LIVING ROOM 10 PIECES \$8 DOWN

HERE'S WHAT YOU GET FOR ONLY \$8 A MONTH

- 2-PIECE VELVET LIVING ROOM SET, produced by a "Famous Maker," Velvet Covering. Compare it with \$95 sets.
- OCCASIONAL CHAIR... Famous Phoenix Construction.
- FLOOR LAMP and SHADE... 6-way reflector lamp.
- SMOKER... Metal, Cocktail Tray.
- COFFEE TABLE... Matched, Figured Walnut Top, Large Size.
- OCCASIONAL TABLE... Regular Walnut Top, Handy Shell.
- END TABLE... Matched, Figured Walnut Top, Handy Shell.
- HASSOCK... Colorful Leatherette Covering.
- TABLE LAMP... Pottery Base, Shade, \$2.95 Value.

USE WARDS MONTHLY PAYMENT PLAN

On all purchases totaling \$10 or more, you pay a small amount down, small monthly payments and a reasonable carrying charge. Pay by the month out of income.

MONTGOMERY WARD

221 MAIN ST. TELEPHONE 384

See It! **Reduced \$5!**

BIG 20 GAL. ALL WHITE

Deluxe "8" Washer

6795

\$5 Monthly, Down Payment, Carrying Charge

COMPARE \$90 WASHERS!

See this beautiful big washer demonstrated today! Check the score of modern construction features! 3-Way Cleansing Process washes clothes faster, gentler! Has big Lovell wringer with Selective Pressure Indicator! Big 20-gal. tub is porcelain finish... 8-lb. capacity! Never needs oiling—a great value!

An Outstanding Value

Special Washer

3795

A great value you won't want to miss! Has famous Lovell wringer! Mechanism and motor are sealed in oil.

Down Payment \$1 Monthly Carrying Charge

Assures Perfect Sewing!

\$4 Monthly, Down Payment, Carrying Charge

4995 Reg. \$64.95

Electric Damascus Rotary Head Modern Console

A beautiful piece of furniture... a fine sewing machine! Makes a lovely occasional table, telephone desk! Sturdily constructed, smooth operating, surprisingly low priced! 5-ply walnut veneer on hardwoods. Greist attachments.

Wards Deluxe

Electric Ironer

5795

It's full size, with features of more expensive ironers! Hand and Knee Control, 26-in. roll! Folding and shelf. All white!

\$4 Monthly, Down Payment Carrying Charge

Sensational Value!

Check These Features!

- New Duragrey Finish
- Streamlined Design
- Adjustable Nozzle

1695

\$3 Monthly, Down Payment, Carrying Charge

Regular \$19.95

Special Cleaner

You'd expect to pay far more for this powerful cleaner! It has famous beating, sweeping, suction action! Will give years of dependable service! Come in today and see it!

MONTGOMERY WARD

221 MAIN ST. TELEPHONE 384