

# WHITE HOUSE FORMS POLICY FOR BOURBONS

(Continued from Page One)

weeks ago and that a frank compromise platform resulted. Democratic platform writers had the advantage of seeing the political battlefield from close range. The republican strategy was already before them. Lemke's program was down in black and white. The Smith group had spoken.

Chiefly the issue confronting the platform committee and later the convention was whether to stand on the new deal as now outlined, or advance. The reception given the Smith statement by commenting leaders showed little disposition to go back.

**New Farm Plank Looms**  
One of the most apparent sectors for an advance was the farm front. Many democrats felt the republicans had approached them on this issue, and a new step forward was necessary. There were proposals for a new scheme of crop insurance to protect farmers against droughts and other "acts of God" that produce bad years.

Secretary Wallace and Chester Davis, former AAA administrator, were authoritatively said to be friendly to a crop insurance plank, but those who participated in the recent White House conference on the farm plank said it was not discussed.

The White House platform was said to contain a broad declaration of principles on the farm question, endorsing soil protection, rural electrification, cooperative organizations, credit for farm tenants, reciprocal trade agreements, and higher wages for urban workers.

## Light Vote Cast On School Ballot

About 10 votes had been cast at 2:30 p. m. this afternoon in the Klamath union high school director election. The polls had been open one-half hour at that time.

Only filed candidate was Ben Loftsgaard, Algoma, the incumbent. There have been some rumors of a writing-in campaign, such as featured in the city board election last week. The high school candidate, however, must come from the Algoma zone.

**Visiting Parents—**Clarence P. Ward and family are vacationing with his parents, Mr. and Mrs. A. A. Ward of the Klamath Funeral Home, 925 High street. Mr. C. P. Ward is superintendent of the Great Western Electric corporation of Los Angeles, California.

## Too Late to Classify

5-ROOM furnished house, adults. 213 Cedar. 5528

BOY 16 wants work on farm. Box 5533 News-Herald.

FURNISHED rooms for rent, 1024 High street, phone 299-W. References. 5535

EXPERIENCED lady will lease or manage apartment house or hotel. Best of references. Inquire Apt. 11, St. Francis. 5542

WANTED—Competent maid. Must be experienced in general housework, laundry and cooking. References required. Phone 1928. 4153

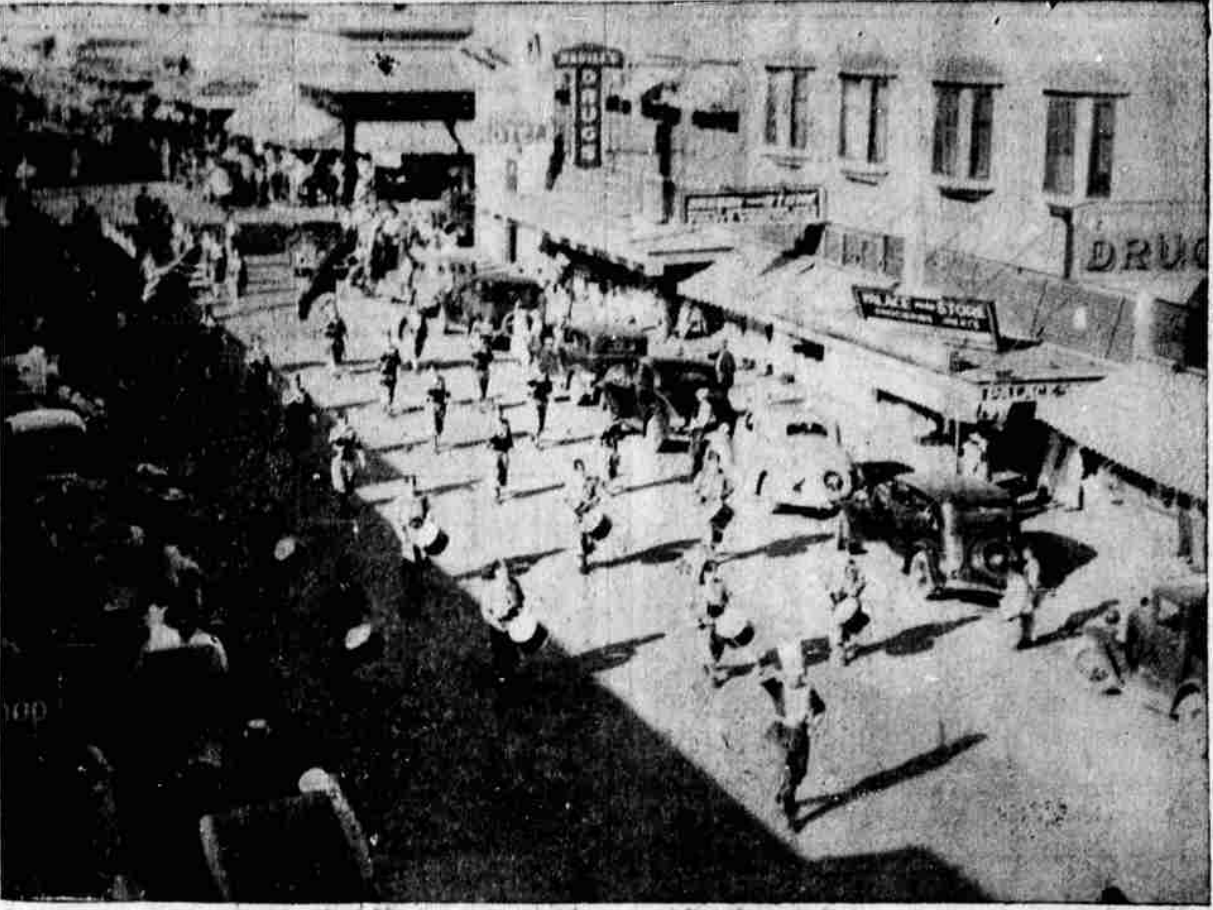
FOR SALE—400 White Leghorn pullets, 14 weeks old, first come first served. Bring your crates, extra fine stock, \$1.00 each. The Strubble Place, Summers Lane. 5536

FOR SALE—5-room house, modern, 2 bedrooms, built-in kitchen, newly finished, wood range connected. \$2,000.00. Terms. O. Peyton. 5537

**SYNOPSIS OF ANNUAL STATEMENT OF THE PHILADELPHIA FIRE & MARINE INSURANCE COMPANY OF PHILADELPHIA, in the State of Pennsylvania, on the thirty-first day of December, 1935, made to the Insurance Commissioner of the State of Oregon, pursuant to law:**

CAPITAL	
Amount of capital stock paid up	\$1,000,000.00
Net premiums received during the year	\$1,267,949.48
Interest, dividends and rents received during the year	184,282.48
Income from other sources received during the year	50,920.78
Total income	\$1,493,952.74
DISBURSEMENTS	
Net losses paid during the year including adjustment expenses	\$ 414,520.23
Dividends paid on capital stock during the year	150,000.00
Commissions and salaries paid during the year	447,926.79
Taxes, licenses and fees paid during the year	99,726.47
Amount of other expenses (Interest)	222,131.83
Total expenditures	\$1,234,305.32
ASSETS	
Value of real estate owned (market value)	Nil
Value of stocks and bonds owned (market value)	4,294,928.25
Cash in banks and on hand	418,980.18
Premiums in course of collection written since September 30, 1935	872,724.07
Interest and rents due and accrued	88,229.03
Total admitted assets	\$5,672,971.47
Gross claims for losses unpaid	\$ 201,946.00
Amount of unearned premium on all outstanding risks	1,240,923.48
Dues for commission and brokerage	15,000.00
All other liabilities	189,922.00
Total liabilities, except capital	\$1,716,891.48
Capital paid up, \$1,000,000.00	
Surplus over all liabilities	\$2,956,080.18
Surplus as regards policyholders	\$2,185,840.18
Total	\$5,672,971.47
BUSINESS IN OREGON FOR THE YEAR	
Net premiums received during the year	\$20,774.23
Losses paid during the year	2,211.34
Losses incurred during the year	1,715.74
Name of Company, Philadelphia Fire & Marine Insurance Company.	
Name of President, H. J. Fisher.	
Name of Secretary, Jno. J. Connor.	
Attorney resident in Oregon for service, W. H. Pyle.	
Local Agent, R. H. Dunbar	

# Across the Burning Sands of Main Street



Shriners of the Hillah temple gave the public of Klamath Falls a hint of the color and brilliance of their secret rituals late Saturday afternoon when they paraded the length of Main street, with neophytes in tow, before turning to concluding phases of their initiation ceremonial at the Klamath armory. Picture shows the Hillah drum corps which led the procession, as it moved up Main street between Sixth and Fifth streets. Temple banners and Hillah dignitaries follow behind in the upper left background. More than 500 Shriners attended the mid-season ceremonials here. (Herald-News Photo-Engraving.)

## FIFTY-FIVE TAKEN INTO SHRINE ORDER

Fifty-five neophytes were taken into the Shrine Saturday in the largest class since 1929, according to nobles of Hillah Temple who presided over the three-day ceremonials held here last weekend.

Representatives from Ben All temple in Sacramento, Nile temple at Seattle, Kerac temple at Reno, and Islam temple at San Francisco, were honored guests at the three-day meeting, which was climaxed by a colorful parade down Main street on Saturday afternoon.

Included in the class of neophytes were representatives from Lakeview, Medford, Ashland, and other Rogue river valley towns, and those from Klamath county who crossed the burning sands included: Walter Welsendanger, Don Hensley, Robert Fulton, E. R. Chandler, Butze Mason, Sr., Ted Shoop, H. E. Jones, Robert McQueen, Karl Lenzinger, Lawrence Bertram, Harry S. Stone, Harry Panning, Lloyd L. Robinson, Jewel Leverich, Gay Campbell, Bruce Webber, William J. Dinmore, W. L. Frain, Melvin Henry, E. H. Hosley, Paul Hilton, Robert Arentz, Earl DeLapp, Bert Snyder, C. J. Clause, Fred Christy, William Page, H. W. Wright and O. E. Burton.

Visiting Nobles were entertained by local Shriners Saturday night and on Sunday, when many

## Youth Receives Serious Wound

(Continued from Page One)

to the Hillside hospital, where it was found that knife point had penetrated and collapsed one lung. If no complications develop, it is believed the youth will recover.

Officer LaLonde made an investigation at the hotel and also learned from the attending physician that it would have been virtually impossible for Price to fall on a knife and inflict such a wound as he had received. On the basis of his investigation he arrested Gerard, who is now held on an open charge at the county jail pending the outcome of Price's condition.

Police said that upon questioning Gerard, he told them that he and Price had some sort of scuffle in the room. They quoted him as saying that he picked up the knife, but that he does not know how it was pushed into Price.

Price early this afternoon had made no further statement to officers as to how he received the serious wound.

Vacation At Rocky Point—Dr. and Mrs. Frank B. Robinson and children, Alfred and Florence, accompanied by Dick Long and Dean Smith, all of Moscow, Ida., are enjoying a vacation visit at the Rocky Point.

## PLANE CRASHES INTO NORMANDIE

GOSPORT, Eng., June 22 (AP)—A royal air force bombing plane crashed on the deck of the S. S. Normandie today. No one was hurt.

The freak accident occurred while the ship was in Cowes Roads, disembarking its passengers from New York.

The plane was being flown by Lieut. G. K. Horsey.

As Horsey piloted the bomber over the big French liner, it struck the stay of a mast, then fell on the deck across the bows of the ocean vessel.

The pilot, shaken up, went ashore, leaving his airplane on the deck of the Normandie which steamed off for Le Havre still carrying its unexpected cargo.

**CHECKS NOT HERE**  
Checks for bonus bonds which were expected from Portland Monday failed to arrive, according to R. L. Griffith, assistant postmaster. Veterans who had hoped for their money were somewhat cheered by the news that postal officials expected the checks within the next day or two.

Here From Seattle—W. P. Maloney of Seattle, traveling auditor for the Great Northern railway, is a business visitor in the Klamath Falls offices.

## Obituary

### LOGAN ARTHUR WILLIAMS

Logan Arthur Williams, for the last seven years a resident of Klamath county, passed away in this city, Monday, June 22, at 12:30 p. m. following an accident near Dairy. He was a native of Hoquiam, Wash., aged 26 years 6 months and 24 days. Surviving are his parents, Mr. and Mrs. Clarence Williams of West Klamath, and one sister, Mrs. Phyllis Manser of New Plymouth, Idaho. The remains rest in the Earl Whitlock Funeral Home, Pine street at Sixth, where friends may call after 5:00 p. m. Tuesday. Notice of funeral to be announced later.

LAKEHURST, N. J., June 22 (AP)—The dirigible Hindenburg grounded at the naval air station at 5:15 a. m. EST, today, bettering its previous record for westward crossing of the North Atlantic by 32 minutes.

**Schilling**  
rich in flavor  
**Pepper**

# STATE HIGHWAY ENGINEERS IN GENERAL SHIFT

SALEM, June 22 (AP)—A general shift of highway maintenance engineers resulted from the creation of the additional division with headquarters at Portland, the state highway commission announced here today. The department now has five main divisions, but maintenance engineers are stationed at other than headquarters cities.

C. C. Seeley of Klamath Falls will be transferred to Astoria, which will be the maintenance headquarters in that section, instead of Tillamook. George Gray who was at Tillamook tendered his resignation.

George Southman of Redmond was transferred to Klamath Falls. W. S. Hodge of The Dalles will go to Redmond, while L. V. Koons of Baker will go to The Dalles. Henry J. Miller, who has been construction engineer at Baker will take charge of the maintenance work in that district.

The change in division engineers, announced last week, will place E. A. Collier of Roseburg at Portland in charge of the new division. He will operate out of Salem until headquarters can be constructed at Portland.

K. D. Lytle of Bend will take charge of the division at Roseburg, W. E. Chandler of Salem will go to Bend while F. L. Eason, assistant division engineer here will have charge of the Salem district. W. C. Williams will remain at La Grande.

## WPA Eliminates November 1 Rule

(Continued from Page One)

be continued although a large number of the unemployed will not be eligible for federal help under it.

In his relief message this year, President Roosevelt told Congress the appropriations would not be sufficient for a year unless private employment picked up.

## BONUS BONDS PUSH UP BANK CLEARINGS

PORTLAND, June 22 (AP)—World War veterans, cashing the first of \$3,000,000 paid out in checks in exchange for bonus bonds, sent bank clearings to new heights here Saturday.

The short-day banking session saw clearings reach \$5,051,000, compared to \$4,561,000 a week ago.

Veterans' officials predicted that half the money was being spent to pay debts. One merchant told of a veteran paying off a long overdue \$700 bill.

The postoffice hired 47 additional typists as the demand for cash swelled and 24-hour shifts were being worked. About 10,000 of the 11,000 veterans expected to receive bonds here have claimed them.

**STATE G. O. P. MEETS**  
PORTLAND, June 22 (AP)—Weekend political caucuses of both major parties saw the selection of Corvallis for the third annual convention of the Oregon Republican club Sept. 4-5 and the election of John J. Beckman as chairman of the Multnomah county democratic central committee.

**FIVE ARABS KILLED**  
JERUSALEM, June 22 (AP)—Five Arabs were killed and two British soldiers were wounded during two attacks by Arab snipers against a train today.

The **PIGGLY WIGGLY STORE** and the **QUALITY MEAT MARKET** will be closed Tuesday afternoon during the funeral of **J. A. Gordon.**

**Announcement**  
**Crystal Springs**  
In Now Open  
FOR SWIMMING AND PICNICKING  
CLEAN, FRESH SPRING WATER  
Near Otene

# ANNOUNCING CLOSING OF ADVERTISING DEPARTMENT

On Mezzanine Floor on July 15, 1936

Due to new conditions - added taxes, such as Social Security, Old Age Pensions—which we are heartily in favor of, it now becomes necessary that we discontinue Premiums as a means of advertising.

Our Premium Department was installed several years ago for the purpose of passing on to our customers cash discounts received by us. We believe these cash discounts should now be applied to Unemployment Insurance, which in no way will increase the cost of merchandise to our customers.

It is impossible for us to assume added costs and continue our large advertising allowance on our present mark-up, and at the same time show a reasonable return on investment.

We know you will find Golden Rule prices proper at all times. A comparison is all we have ever asked during the past twenty-six (26) years, and all we ever expect to ask. When extended that courtesy this store usually gets the business.

You will find a nice selection of premiums in the Advertising Department on the Mezzanine floor at the present time, which are free to those holding a sufficient number of sales slips. Purchases will apply through to July 15th, which will assist in securing the wanted articles yet available.

**Golden Rule Stores**  
ECONOMISTS IN DISTRIBUTION THE NAME OUR POLICY

# FRESH IN ANY LANGUAGE

— and what's more IN ANY CLIMATE! —

**FRESH** **PAKA HOU** **MAMAKTOK** **新鮮**

PAINTED POST ARIZONA HONOLULU HAWAII NOME ALASKA CHINATOWN SAN FRANCISCO

IN EVERY language spoken in the U. S. A., they're saying "FRESH!" whenever a pack of Double-Mellow Old Golds is opened.

Look at the package of Double-Mellow Old Golds and you'll SEE why!

Two jackets of Cellophane, not one but TWO, stand guard over the freshness of Old Gold's Prize Crop Tobaccos. Each jacket is moisture-proof Cellophane;

the highest quality obtainable. This double Cellophane wrapping keeps out dampness, dryness, dust, impurities and every other foe of cigarette goodness.

It brings you FACTORY-FRESH cigarettes; as fresh as they roll off the cigarette machines.

*Phillips Company*  
(Established 1760)

P.S.: Yes, indeed! Double-Your-Money Back if you're not pleased. Offer still open, for 30 days from today.

**Old Gold CIGARETTES**

OUTER Cellophane JACKET opens from the bottom

INNER Cellophane JACKET opens from the top

© P. Lorillard Co., Inc.

## 2 Jackets, Double Cellophane, DOUBLY PROTECT PRIZE CROP TOBACCOS