

STOCK GAINS ACCOMPANY WHEAT JUMP

CHICAGO, Oct. 30. (AP)—Wheat late today went above the season's highest previous level. General buying on the part of cash and seaboard interests swept the pit clear of surplus offerings, and it was confirmed that government sponsored agencies had been selling wheat to exporters, and taking December future delivery contracts in exchange. Drought reports from Argentina and from domestic winter wheat territory southwest were an additional bullish factor, together with word that Russia is cancelling forward wheat sales.

Rye as well as wheat outdid the season's top price record, with Poland reported as having bought a big quantity of rye from Russia. Wheat closed strong 1 3-8-2 3-8 cents higher; corn 1-1 1-8 cents up; oats 3-5-8 advanced, and provisions varying from 15 cents decline to 50 cents gain.

NEW YORK, Oct. 30. (AP)—A rise in stock and bond prices was accompanied by an advance of 3 cents a bushel in wheat today.

Trading in securities was quiet, but the markets were obviously encouraged by the decrease in currency circulation, which meant that hoarded money was returning to the banks.

Word that New York Central was negotiating with employees for a voluntary and temporary wage reduction was taken as a forecast of similar action by other lines, and railroad shares rallied strongly. Atchison and Union gained about \$6.

United States Steel advanced \$2 to \$67. American Telephone nearly \$3 to above \$127. New York Central \$2.50 to \$54 and American Can \$2.50 to \$52.50.

An advance in the bond market was featured by the strength of railroad lines.

PORTLAND, Oct. 30. (AP)—Another new high for the day and for the season was reached for both May and December wheat on the Portland futures market for today's session. Closing on December was up 1 cent with May advanced 1 3-8. Outside orders in both options were unfilled with lack of sellers. There were buyers galore. Sales included but 8000 bushels December and 1000 bushels May. On the Merchants' Exchange cash wheat gained 1 cent bushel, oats and barley \$1 ton.

Dunn Urges Help For Relief Work

C. A. Dunn, of the Dunn and Baker construction company, who temporarily served on the Governor's relief committee at the request of William Dalton, who was appointed and could not serve because his residence is in California, Friday asked that his friends "give their full cooperation to the committee in its work, although I am not a member of the committee."

Charles Williams, county commissioner, Chiloquin, was appointed by the governor to take the place of Dalton and to serve with County Judge Fred R. Goddard and Henry Moe.

Normal Grid Men Stop Off Here

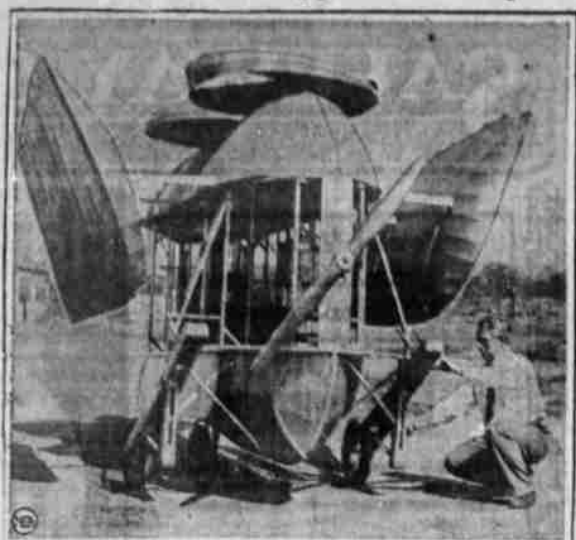
The Eastern Oregon Normal school football team, with Coach Robert Quinn and Manager Ellis Watkins, stopped in Klamath Falls Thursday night at the Hall Hotel enroute to Ashland where they meet the Southern Oregon Normal team Saturday afternoon in a homecoming game for the Ashland school.

Members of the squad are: Captain Ray Irwin; G. Plass, H. Hoyt, J. Parker, L. Roe, C. Faus, C. Larson, K. Hodgins, W. Pearson, J. McCall, F. Baxter, R. Osterling, C. Cisek, E. Braden, N. Worthley, B. Lowry, J. Hyde, L. Veit, L. Halvorsen.

BACK TO THEIR HOMES

Statues of 16 great Frenchmen, which for nearly a century have occupied a place of honor at the chateau at Versailles, are being removed and presented to the towns of the birth of the men they represent.

Here's a New Type of Airship



"This weird device is a cross between an airplane and a helicopter and is called a 'mobliopter.' Harry Cordy of El Monte, Calif., seen at its side, is its designer. The wings fold in and flatten out as the ship rises and descends. Those air screw discs on the top pull it upward, and the propeller pulls it forward. Cordy expects to test it soon.

Standard Statistics Stock Averages

(Copyright, 1931, Standard Statistics Co.)

	50 Ind's	20 'X's	20 Ut's	90 Total
Today	89.6	45.9	129.6	82.8
Previous day	84.0	47.4	117.8	80.3
Week ago	84.0	51.2	124.9	86.1
Month ago	74.3	51.0	119.9	77.1
Year ago	132.7	107.1	184.1	137.7
Three years ago	188.0	123.3	160.3	172.8
Five years ago	103.4	102.9	106.6	102.0
High (1921)	140.2	106.2	203.9	144.3
Low (1921)	67.8	42.5	101.5	70.9
High (1920)	202.4	141.6	281.3	205.8
Low (1920)	112.9	86.4	146.5	114.7
High (1929)	232.8	167.8	353.1	253.5
Low (1929)	141.3	117.7	193.3	140.2

DEMAND FOR WOOL SOMEWHAT SLOWER

BOSTON, Oct. 30. (AP)—The Commercial Bulletin tomorrow will say of the wool market: "Demand for wool has been slow and irregular and prices have been somewhat erratic but generally in favor of the buyer. The Lawrence strike still overshadows the situation and buyers of piece goods evidently are awaiting the outcome. Continued warm weather also serves to restrain the market. There is not outstanding feature in the trading."

"The foreign markets continue to show strength and have made a slight gain for the week in Australia. Montevideo also is a bit dearer due partly no doubt to the news of the short clip there of 100,000 bales estimated against 150,000 bales last season."

"Mohair is dull and prices are hardly changed for the week." The Bulletin will publish the following quotations:

Scoured basis:
Oregon:
Fine and F. M. staple 54-56; fine and F. M. Fr. combing 50-52; fine and F. M. clothing 45-47; Valley No. 1, 45-50.

Mohair:
Oregon 20-21.
Domestic graded:
First combing 22-25; good carding 26-28.

PORTLAND WHEAT

PORTLAND, Oct. 30. (AP)—Wheat:

	Open	High	Low	Close
Dec.	55 1/2	56 1/2	55 1/2	56 1/4
May	57 3/4	59 1/4	57 1/2	59 1/4

Cash Wheat:
Big Bend Bluestem 77
Soft White 64
Western White 64
Hard Winter 64
Northern Spring 64
Western Red 64

Oats:
No. 2 White \$21.00
Today's car receipts: wheat 46; barley 1; flour 3; corn 6; oats 1; hay 1.

MARKET QUOTATIONS

PORTLAND, Oct. 29 (AP)—Cattle 50; calves 10; murt weak. Steers, 500 to 900 lbs., good, \$6 @ \$7.75; medium, \$4.75 @ \$6; common, \$3 @ \$4.75; 900 to 1100 lbs., good, \$4 @ \$7.75; medium, \$4.75 @ \$6; common, \$3 @ \$4.75; 1100 to 1300 lbs., good, \$5.75 @ \$6.50; medium, \$3.75 @ \$5.75. Heifers, 550 to 850 lbs., good, \$5 @ \$5.50; medium, \$4 @ \$4.50; common, \$3 @ \$4. Cows, good, \$4 @ \$4.50; common and medium, \$2.75 @ \$4; low cutter and cutter, \$1 @ \$1.75. Bales (yearlings excluded, good and choice (beef), \$2 @ \$3.50; cutter, common and medium, \$2 @ \$3. Vealers (milk fed), good and choice, \$7.00 @ \$8.00; medium, \$5.50 @ \$7.00, cull and common, \$3.50 @ \$5. Calves, 2.50 to 5.00 lbs. good and choice, \$2.50 @ \$7.50; common and medium \$3 @ \$5.

Hogs 425, 10c to 25c lower;

TWO OREGON SCHOOLS PLAN JOINT EVENT

UNIVERSITY OF OREGON, Eugene, Oct. 30.—A joint Homecoming celebration on Saturday, November 14, is the plan which will be inaugurated by the University of Oregon and Oregon State College, when the two schools meet for their annual football clash on Hayward Field at Eugene. Students of both schools are now conferring on details of the plan, which they believe will promote a new era of good will.

Special trains will be run from Corvallis to Eugene on the morning of the fourteenth, in time for a huge joint luncheon in McArthur Court. This luncheon promises to be the largest of its kind ever held, with the entire crowd of supporters of both teams mingling together in a mammoth social event before the classic battle.

A huge rally on Friday evening will start off the celebration for University of Oregon students, which is expected to bring hundreds of alumni back to the University. Colorful welcoming signs will be up at all living organizations, for which prizes will be awarded.

Alumni of the University will be present in such numbers as to swell the regular meeting to a convention, according to Miss Jeanette Calkins, alumni secretary. Homer D. Angell, of Portland, president of the association, will be on hand to preside at the meeting which will take up the discussion of university problems. A special luncheon will be held for alumni before the game, and a big reception for the alumni will be held in the evening at Gerlinger Hall.

Following the reception, which will afford an opportunity for alumni and students to get together, there will be a dance in McArthur Court, which will be specially decorated for the event.

ENGINEERS START SURVEY OF ROAD

A crew of engineers from the local office of the state highway department has begun a survey of the Crater Lake highway from the Fort Klamath junction to the park boundaries, it was announced Friday.

The survey has been authorized to determine what is required to bring this road up to standard. It has been estimated that about two weeks will be required by the engineers to secure their field data for work on this highway.

An emergency labor crew of 20 men is now at work in this section cleaning up the rights of way in the timbered areas.

Parks Engineer Pays Visit Here

S. H. Boardman, parks engineer for the state highway department, arrived in Klamath Falls Friday on his regular inspection trip. Boardman visited at the chamber of commerce, discussing park conditions, and also at the local office of the state highway department.

Dons Overalls



Prince Louis Ferdinand, above, grandson of Germany's ex-kaiser, has donned overalls and gone to work in a Detroit automobile plant where he must punch a time clock daily. He chooses to work for a living, although he has a doctor of philosophy degree and speaks seven languages fluently.

RAY LONG WRITES BOOK ON RUSSIA

NEW YORK, Oct. 30. (UP)—Ray Long, who has edited thousands of manuscripts but never wrote one, has broken his record with a little volume, published today by his own house, called "An Editor Looks at Russia."

The book, brief as it is, should be of interest to:

1. Those disgruntled authors who believe an editor incapable of writing, a theory Long handsomely refutes.
2. Those who are afraid of the Russian "menace."
3. Those who think they would prefer living in Russia.
4. Those who aren't interested in anything but entertaining, aridly written descriptions of a country that, despite the volumes of material that have been written about it, is still a vague and mysterious land.

KUYKENDALL NAMED LAW REVIEW EDITOR

(Special to the Klamath Falls News and Herald)

UNIVERSITY OF OREGON, Eugene, October 30.—As a recognition of his splendid work in the law school at the University of Oregon, William Kuykendall of Klamath Falls, has been named editor-in-chief of the Oregon Law Review, monthly magazine published by the school. This position is given only to a student who has maintained a consistently high scholastic record, and who has shown himself to be responsible, capable and the possessor of unusual ability.

Kuykendall is now in his second year in the law school and his fourth at the university. He has won membership in Phi Delta Phi, national honorary organization in law, and is a member of Phi Sigma Kappa fraternity.

Charles G. Howard, professor of law at the university, will be the editor-in-chief of the magazine, and assisting him, besides Kuykendall, will be 24 Oregon lawyers and a number of outstanding students. The first issue of the magazine will appear on December 15.

Army regulations prescribe a gold or yellow fringe on all American flags used as regimental colors or standards.

COFFEE VARIES IN FLAVOR IF ROAST IS "HIGH" OR "LOW"

Hills Bros. Overcome This Variation by Their Patented Process—Controlled Roasting

There is no way to know when a big batch of coffee is perfectly roasted. One batch may be "high," another "low," with the result that there is variation of flavor.

Hills Bros. overcome this uncertainty, with their radically different and exclusive process—Controlled Roasting. As the accuracy of the hour-glass depends upon an even, continuous flow... a little at a time... so the uniform flavor of Hills Bros. Coffee is produced by this patented process that roasts evenly, continuously... a little at a time. Positive control of heat develops every berry to perfection—to the degree that insures a rich, full-bodied, unvarying flavor in every pound.

No other coffee tastes like Hills Bros. Coffee because no other coffee is roasted the same way. Controlled Roasting is Hills Bros. own process.

Hills Bros. Coffee is packed in vacuum cans that keep it ever-fresh. Air, which destroys the flavor of coffee, is removed from cans and kept out. Coffee packed in ordinary cans, even if "air-tight," does not stay fresh. Ask for Hills Bros. Coffee by name, and look for the Arab trade-mark on the can.

Hills Bros. Coffee, Inc., San Francisco, California. © 1931

Jadson's Superior Motor Products

Valves
Valve Guides
Pistons
Piston Pins
EMSCO Fan Belts
EMSCO Brake Lining
EMSCO Radiator Hose

Distributed by
H. L. Pritchard
522 Klamath Ave. Phone 2207

SATURDAY ONLY \$1

Choice of any one of our new Fall and Winter Hats in the store. Most ladies know our values.

Barth's Dollar Store

TRAFFIC TIPS

By Sergeant Carl Cook Klamath Falls Police

When shall all vehicles be equipped with regulation lighting equipment?

Answer: During the period from a half hour after sunset to a half hour before sunrise and at all times when fog or other atmospheric conditions render the operation of a motor vehicle dangerous to traffic.

Every motor vehicle or trailer shall carry at the rear a lamp which exhibits a red light visible under ordinary atmospheric conditions from a distance of 500 feet to the rear of such vehicle, and shall be so constructed or placed that the rear number plate shall be illuminated by a white light so as to be read from a distance of 50 feet to the rear of such vehicle.

Farmers Market

524 Main—Palace Market Bldg.

We Will Have a Complete Line of Fresh Farm Vegetables, Home Baked Pastries, Country Dressed Chickens, Fresh Fruits and many other Farm Products, sold by the farmers themselves, and priced at a saving. Patronize them, and help avoid the depression.

Here are a few of the Saturday Features

Pie Pumpkin and Squash lb. 1 1/4c	Country Dressed Chickens and Rabbits Sold by Raisers Themselves Market Price
Cabbage Large Solid Heads lb. 1 1/2c	New Crop Soft Shell Walnuts lb. 20c
Fresh Bunch Vegetables 3 bunches 10c	Pure Apple Cider per gallon 30c
Apples Newtons Box 50c	Coffee Fresh Ground—Quality Blend lb. 23c



Month-End SALE Saturday Only

Coats Special

Reduced To

\$25.00 \$39.50

Both Dress and Sports Coats included in this event. The Dress Coats are gorgeously furred and the Sports Coats are tailored with self collar and cuffs.

Cliftons'

DO YOU KNOW

You can buy, delivered equipped in Klamath Falls

PONTIAC	OAKLAND
\$879.50	\$1129.50

These prices are for the Standard Coupe or the 2-Door Sedan. All models equipped with front and rear bumpers, 4 hydraulic shock absorbers, 5 wire wheels, and extra tire, tube and tire lock. Or, if you prefer, wood wheels are optional.

	Pontiac	Oakland	Delivered
Coupe	\$879.50	\$1129.50	Equipped
Two-door Sedan	879.50	1209.50	In
Sport Coupe	919.50	1229.50	Klamath Falls
Four-door Sedan	949.50	1229.50	
Convertible Cpe	949.50	1229.50	
Custom Sedan	989.50	1289.50	

Snyder's Repair Shop
8th and Klamath

BRATTON'S

Sweet Apple Cider	Gal.	33c
Pumpkins	Pound	2 1/2c
Oranges	2 Dozen	25c
Coffee	Chase & Sanborne Package	28c
Walnuts	Franquettes 2 Pounds	49c
Bread Delicious Sliced	2 for	15c
Dressed Pork—Hogs weighing from 40 to 70 lbs side, lb.		11c
Mutton Half	\$1.19	Whole \$2.25

Put Your Winter Pork Down Now.

2242 S. 6th St. 201 E. Main 2045 Ore. Ave.