

# The Evening Herald

LEE TUTTLE, City Editor  
 LYNN ZIMMERMAN, Advertising Manager

Published every afternoon except Sunday by The Herald Publishing Company at 102-122 South Fifth Street, Klamath Falls, Oregon

Entered as second class matter at the postoffice of Klamath Falls, Oregon, on August 20, 1906, under act of Congress, March 3, 1879

MAIL RATES PAYABLE IN ADVANCE

By Mail	Delivered by Carrier
In Outside County	In City
One Month	One Month
Three Months	Three Months
Six Months	Six Months
One Year	One Year

Three Months \$1.75  
 Six Months 3.25  
 One Year 6.00

ASSOCIATED PRESS LEASED WIRE MEMBER AUDIT BUREAU OF CIRCULATION

Represented nationally by M. C. Moberg & Co., Inc., San Francisco

New York, Seattle, Portland, Detroit, Chicago, Los Angeles

Copies of The Herald and News, together with complete information about the Klamath Falls market, may be obtained for the asking at any of these offices.

Member of the Associated Press

The Associated Press is exclusively entitled to the use or republication of all news dispatches credited to it or not otherwise credited in this paper, and also the local news published therein. All rights of republication of special dispatches herein are also reserved.

Wednesday, January 21, 1931

## Gas Comes To Klamath Falls

KLAMATH FALLS can now really boast of possessing all the modern conveniences of a larger city. Gas has come and with it comes the end of the housewife's drudgery and the dawning of an era of freedom from kitchen and household slavery. We of this community can be justly proud that gas service is being supplied to us by the Natural Gas Corporation of Oregon, as no other enterprise could so manifestly prove that this is a growing and stable community. Big enterprises do not select backward communities when they plan developments.

While most of us who live in the smaller communities realize that they have their advantages, we understand, also, that until the advent of gas they have their inconveniences too.

It is not a far step to the days of the small town with unpaved streets; no sewer system, and when the farmer hitched his horse to the long post in front of the general store and went inside to talk over the news of the world that filtered in by mail from the far-flung corners of the globe.

The automobile changed the dirt streets to pavement—the radio put an end to the corner store as a news center, and the kerosene lamp found its way to the junk pile when electricity arrived. Until now there has been only one link remaining to the past. It was the coal or wood stove, but it is passing now with the arrival of gas.

How many of us can recall as youngsters that dreaded call of mother from the stoop of the front porch, "Johnny, come in and cut the wood." And Johnny—kidded by the other youngsters—dropped his bat and glove in the center of the street or on the corner lot and beat it for the backyard to do his duty at the woodpile. The Johnnies of today are no longer hearing mother's fervent appeal and neither is mother carrying in the wood when Johnny can't be found. Mother has turned modern, and she is cooking with gas and heating the house with gas.

Gas will change the whole structure of life in the smaller communities of the state, and Klamath Falls can well be proud that it is one of the first cities to be so selected. Folks will not only cook with gas, but they will heat the house with gas, and if baby suddenly becomes ill at night they will have instant hot water from a gas storage heater.

The advent of gas has not only brought about a change in the community which receives it, but it brought about a change in the gas company. The day was when a gas plant was a detrimental factor to a community, because of its unsightly appearance and its unwholesome odor. Not so with the gas which is coming to Klamath Falls. The gas company has erected a beautiful Spanish-type building upon a plot of ground to be later enclosed in a new wire fence, and flowers in the open spaces to beautify the view. It is indeed a change and one which will be welcomed by the people of Klamath Falls in more ways than one.

The new era is here. Let us make the most of it.

## Paragraphs by Quillen

Still, peace has advantages. Some little 2x4 official annoys you a lot, but you don't have to salute him.

One way to keep boys from going to the chair is to employ treatment that makes them prefer standing up.

Cutting wages will just postpone good times. That's the way it worked when they began cutting liquor.

So many boys now disgrace the family by doing openly the things dad does in secret.

You can tell an uncivilized country. It has no device that enables a scared kid to rob a dozen brave men.

How unfortunate that vacuum cleaners didn't appear until men quit growing beards.

Somebody suggests that all officials should wear some badge, and the office cynic suggests a small gold replica of a dog's hind leg.

The only difference you notice when vacation is over and the kids go back to school is that you know where the car is.

There's a catch in these inspirational success stories you see in the papers, son. They don't tell how it hurts when the police shoot back.

Americanism? Indulging in a periodic financial spree; howling in dread of economic death while sobering.

Men and dogs aren't much alike. When a dog lifts his nose he's in misery instead of a limousine.

Maybe turpentine and lard on the chest didn't cure colds, but it made the germs give up in disgust.

Business just seems bad, like the flight racket, because you can no longer get rich quick at the expense of suckers.

You never realize how influential you are until you observe that automobile manufacturers always wait until you buy before announcing a lower price.

People who think statesmen should vote as they drink must think roll calls come often.

The policeman's lot is not a happy one. How can he tell, when when a car is acting that way, whether it's liquor, love of lunatics.

alike. When a dog lifts his nose he's in misery instead of a limousine.

Maybe turpentine and lard on the chest didn't cure colds, but it made the germs give up in disgust.

Business just seems bad, like the flight racket, because you can no longer get rich quick at the expense of suckers.

You never realize how influential you are until you observe that automobile manufacturers always wait until you buy before announcing a lower price.

People who think statesmen should vote as they drink must think roll calls come often.

The policeman's lot is not a happy one. How can he tell, when when a car is acting that way, whether it's liquor, love of lunatics.

## Fire Sweeps Over Polish College At Cambridge Springs

CAMBRIDGE SPRINGS, Pa., Jan. 21, (AP)—The main building of the Polish National Alliance school here—including the school's fine museum—was a mass of smoldering ashes today, and faculty members estimated the loss at last night's fire at close to \$1,000,000.

The building burned to the ground. Many valuable relics, including letters exchanged by George Washington with distinguished poles who aided him in the American revolution, were prey of the flames.

College officials said today the Polish government once had offered the school \$50,000 for these letters.

## Modern Baths Are Lounging and Dressing Rooms, Too

### Soft Colors Decorate Walls and Floors in Contrast to Gaudy Patterns of Other Years

BY JULIA BLANSHARD  
 NEA Service Writer  
 NEW YORK, Jan. 20.—Bathrooms, dated 1931, promise to be epoch-making.

In the first place, designs for 1931 models of this important room show that new ones will become dressing rooms, powder rooms, lounging rooms, instead of serving their single purpose of bathroom.

Second, they prove that the one vivid color scheme—with giddy, brilliant walls, floor, tiling, fixtures, curtains and bath accessories, all endeavoring to match each other exactly—is out. That is last year's model.

New, artistic bathrooms use neutral, softly tinted walls, a similarly neutral floor tone, and then by subtle nuances of color play up the beautiful snakeskin, powder rooms, lounging rooms, instead of serving their single purpose of bathroom.

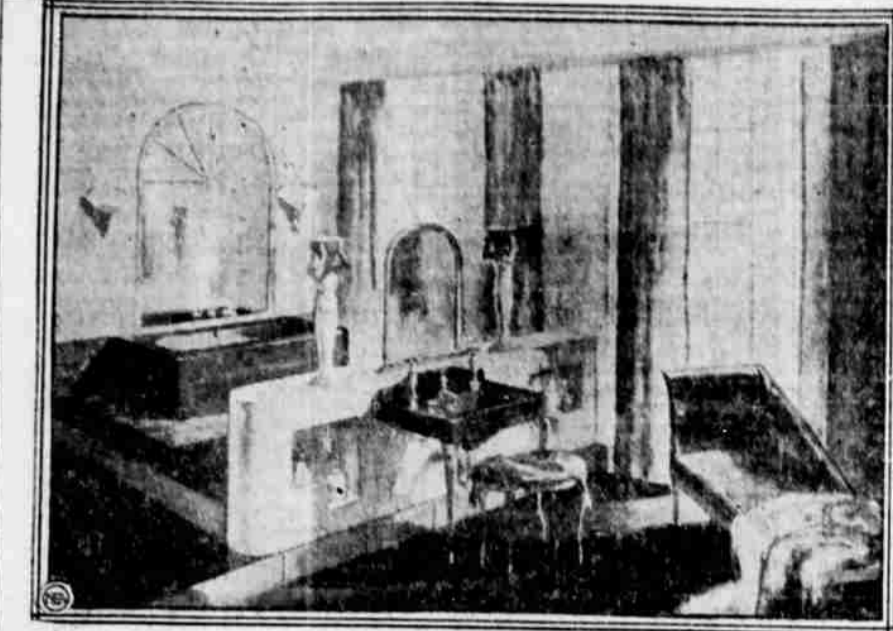
### SLOW EVOLUTION

Just as it took automobiles a long time to get over being merely "horseless carriages," so has it taken the old-fashioned bathroom to evolve into the 1931 de luxe state. Slowly but surely, the bathroom has been changing.

More windows are needed in bathrooms, more windows to give light and sunshine, for this room makes the greatest use of water of any room in the house and therefore needs more light and sunshine.

The new glass which penetrates is used in many of them to give you a sun bath while you are undressed.

The bath tub, lavatory and closet will no longer depend upon wall plaques as of old. The lavatory may have windows to gaze out as you wash your teeth, the closet can have its own recess or



Three-in-one—solarium, boudoir and bath—is this luxurious 1931 model. The bath tub, lavatory and other fixtures are in a new French style, the floor ultra-marine blue and the tiles by the tub and on the steps leading to it are gray-blue, and the curtains and chaise longue's upholstery is apricot. Built-in cupboard's house toilet articles and supplies, and atop them marble figures flank a rounding mirror that reflects on both sides. (Photo from Standard Sanitary Manufacturing Co.)

alcove curtained off from the rest of the room, and the tub may be placed in the center of the room, up a few steps or down a few.

The bathroom recognizes the need of built-in closets for beauty lotions, for supplies, for all the make-up paraphernalia women need. In efficiency, it will catch up with the well planned kitchen for convenience, for the height of fixtures, for comfort in using.

Typical of the new bathroom is one cylindrical one, with the tub in the center, sunk like an Italian garden. Another has a charming fireplace built into it, with a comfortable chair to sit upon while drying yourself. A third has its tub and lavatory up three roundings steps, with glass shelves behind glass doors, just like an en-

closed book case, where all the beauty supplies can be kept. At one side of this dressing table—really a combination dressing table and writing desk—with a French phone attached for greater convenience.

### STANDARD COLOR SCHEME

A handsome prize-winning bathroom for 1931 uses the following color combination: The lavatory and bath are of Royal Copenhagen blue, the ceiling light ivory, the walls three shades darker, the floor white-tiled with a border of black marble both in the dressing room end of the bath and around the tub; the furniture upholstery is golden brocade and the Venetian blinds, for the window of special glass that transmits the ultra-violet rays of the sun, are of gold

tone. The rugs are of rich burgundy red.

Another and exceedingly beautiful 1931 bathroom uses a bath tub, lavatory and seat of rich Tang red, a rich claret red; there is a whole side of the bathroom of the special glass made to admit the sun's ultra-violet rays; the concave ceiling is ivory, the walls cream, the furniture has silver bases and is upholstered in apricot tone, to match the draperies. The bath, which is raised, has a gray-blue tiling surrounding it and the steps up to it are the same. The rest of the floor is ultra-marine blue and there is a charming chaise longue upholstered in the apricot, with blue pillows. All of the toilet bottles enclosed in the glass, built-in cupboards, are of the rich claret red of the bath tub.

## OPERATION OF PLANT IS TOLD

(Continued from Page One)

is put into the gas, just as is done when natural gas is served a community from a huge transmission line, rather than by the tank car system.

The second tank is the gas storage container, also of heavy steel construction, and equipped with a safety valve and a pressure gauge. This is designed for a working pressure of 100 pounds per square inch, although the plant is automatically equipped to never allow this pressure to rise above 75 pounds.

These tanks are painted with aluminum paint, which not only gives the entire plant a very neat appearance, but acts as a heat reflector as well. And the capacity of the plant may be easily increased by adding additional tanks as needed, with no major changes in the plant building.

### OPERATION OF PLANT

The liquid gas goes through a pipe from the butane storage tank and passed into the plant at a pressure of some 20 pounds per square inch. Here it goes through a series of regulators which stop the pressure down and the line connects with a sealed type air intake, the flow of the vapor being controlled by a butterfly valve at approximately atmospheric pressure.

This mixture then enters the chamber of the compressor and thence into the surge tank, the odorization fluid is introduced and it passes into the gas storage tank.

The entire plant property is surrounded by a seven-foot cyclone fence, with a minimum clearance of 12 feet, which not only offers protection to the public but makes it possible for the entire plant to present a very neat and attractive appearance. The entire process is very clean, and there is none of the dirt and disagreeable odor common with the old type of manufactured gas plant.

### ALL BUTANE

The butane being served by Natural Gas Corporation of Oregon, as by its affiliated companies, Natural Gas Corporation of Washington and Natural Gas Corporation of California, is thoroughly vaporized and dehydrated before entering the distribution system, unlike is done in some instances.

The reason for this is obvious, in that throughout the communities in northern California, Oregon and Washington the temperatures vary considerably from season to season.

### GAS SERVED DRY

The process of vaporization insures that all gas served to the consumer is absolutely dry and therefore eliminates any diffi-

## A. E Strong



A. E. Strong in charge of operations of the Natural Gas Corporation of Oregon and the Natural Gas Corporation of Washington is another official who will be present Thursday noon when gas is turned into the Klamath mains.

iculties arising from clogged and dirty appliances. The plant process developed by these companies and in use in all properties, serves to produce a gas which in addition to the qualities of dryness and cleanliness, is maintained at a practically constant BTU value. This, in itself, is of extreme importance to the ultimate consumer, who is assured of a steady, even heat at all times.

We feel confident that all residents will be more than pleased with this new fuel brought to this community, as it is proving exceptionally popular in all territories where it is now being served.

## Biggest Roast Cooked by Gas In France, 1850

In 1850, Soyer, the master chef of France, roasted a 526-pound joint of beef in a brick oven heated with 216 gas jets, thus proving that gas could perform feats of cooking that were possible to no other form of fuel.

During the next 20 years gas made rapid strides. Gas stoves began to be manufactured with the result that in hotels, restaurants and many homes the kitchen parts of the building was replaced with the clean, instant heat of gas.

Basel G. Eaves of the National Tuberculosis association thinks that 10 kitchenless years would probably cut the tuberculosis death rate in half.

## Pemperton Used Gas in Industry As Early as 1806

Gas was a help in industry as early as 1806, when Josiah Pemperton used it to solder buttons as well as to light the front of his factory in Birmingham, England. Fifty years later Eisner said that there was practically no form of factory heating for which gas could not be recommended.

Instead of hauling wheat 18 miles to a rail line, several grain growers in Washington state are sending it from their farms to the railroad over a pipe line. The grain slides through the pipe to the railroad station where it is sacked for shipment.

## Government Is Among First to Light by Gas

The United States government was among the first to make use of gas for lighting. Some few years after the discovery of gas at Fredonia, N. Y., some ingenious parties made a contract with the government to supply the lighthouse at Barcelona harbor with this fuel.

Using a barrel for a gasometer, they sealed it over a gas spring, then constructed a pipe line half a mile long running to the base of the lighthouse from which the gas was conveyed to the summit by an ordinary lead pipe. In this way they were able to supply more gas than was re-

quired for the consumption of 144 burners furnishing a bright and steady light to this lighthouse for over 26 years.

Sixty-five per cent of the cigarettes made in the United States are from North Carolina.

### BAVARIAN OFFICERS BURIED IN AVALANCHE

MUNICH, Germany, Jan. 21 (AP)—Seven or eight Bavarian constables who were buried in an avalanche near here yesterday were found dead under the snow today. The eighth was still alive but severely injured.

**HOT WATER SERVICE**

at a moments notice, with

**RUUD**

Automatic Water Heater

GAS brings you this comfort and convenience

Visit our complete display and choose the model to fit your needs

**Natural Gas Corporation OF OREGON**

**Gas**

Every Citizen of Klamath Falls Is Cordially Invited

to attend the dedication of your GAS PLANT and the ceremonies incident to the "turning on" of Gas on Thursday, January 22, at noon.

**Free Transportation From Our Office to the Plant**

This community may justly feel proud that gas service is being supplied by Natural Gas Corporation of Oregon as no other enterprise could so manifestly prove this is a growing and stable community.

**BIG ENTERPRISES DO NOT SELECT BACKWARD COMMUNITIES WHEN THEY PLAN DEVELOPMENT**

The new "Era" is here—Let us make the most of it.

Gas for COOKING  
 Gas for HEATING  
 Gas for HOT WATER  
 Gas for ECONOMY

You only pay for what you use

**Natural Gas Corporation of Oregon**

721 Klamath Avenue Phone 1685