

THE MOTORISTS' PAGE

ing 30,000 miles in 26,324 minutes.

MIRROR ACTS AS BRAKE
BERLIN, May 21.—Dr. Haasler, German scientist, has successfully demonstrated over 4,000 times a new device to stop trains by means of a mirror. A mirror of many facets is placed in a semaphore signal and the light from the oncoming locomotive is picked up and thrown back to a selenium cell on the engine. This, in turn, works the brakes, bringing the train to a stop within a few feet.

SHELL POLISH PROVIDES EASY CLEANING PLAN

New Product Will Do Better and Finer Job, Claims Company

In the spring a young man's face may turn to what the poet says of the young man doesn't care for an automobile. But if he does, then his thoughts are just like the thoughts of a million other motorists who are wishing for some easy, safe way to take the road grime off the old bus and make her look as new as the flowers in the fields.

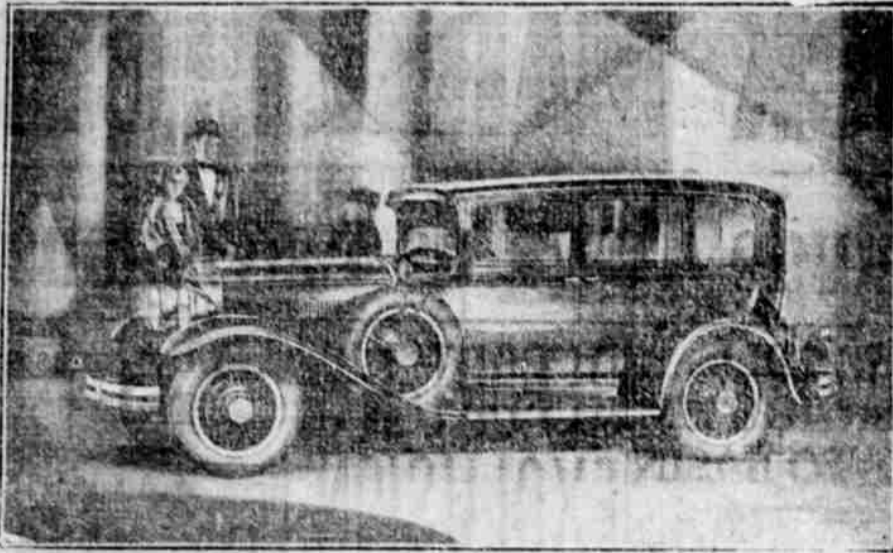
Of course everybody wants his car to look nice and new all the time—but it's absolutely essential at this season of the year. Why, it actually makes you tired to ride in a car that is dingy! The only trouble, of course, has been that polishing was a darned hard job and even the hardest work often failed to restore that new car finish you craved.

But this drawback has now been done away with! A new polish, created by research chemists who made an exhaustive study of the crime that kills a car's appearance, has just been announced by the Shell laboratories. It was created as a service of the hundreds of thousands of motorists who are regular users of Shell 100, the "dry" gasoline, and Shell Motor Oil.

W. J. Yates, Research Chemist who was in charge of the work of creating this new, finer polish, describes it as entirely different from the ordinary polishes which you have been buying. "The Ducco finishes on cars today require actual polishing to remove road grime and restore original luster," Mr. Yates says. "Shell Auto Polish will do a better, quicker, safer job than any I know."

PATIENT ANYHOW
GMSY, Ind., May 21.—After waiting 14 years, Mrs. Lulu M. Williams won an award of back alimony from her former husband, John F. Moloney. They were married in 1907, divorced in 1912 and in 1913 she was awarded \$20 a month alimony. Moloney hadn't paid her in 14 years and she received \$1600 as a result of the judge's decision.

The New President Eight



This Studebaker President Eight sedan of 115 horsepower, is mounted on a chassis of 125-inch wheelbase. Equipped with six wire wheels and luggage grid, it is offered at \$1895 at the factory. It is available with either broadcloth or mohair upholstery. The President Eight last year established the greatest record for endurance and speed in history by traveling 30,000 miles in 26,324 consecutive minutes at the Atlantic City Speedway. By this feat, the President won 11 world records, and its title, "World Champion Car."

Full Economy Feature of New Whippet Models; Increased Horsepower and Less Gas

Although notable advancements have been made in the past few years in the development of four cylinder power plants which marked economy in fuel consumption without sacrificing power, speed or all-around performance, the higher compression engine employed in the Whippet Six strikes a new note of lower gasoline consumption for light sizes.

Throughout the past year while the new Whippet Six power plant was in the hands of Willys-Overland engineers undergoing strenuous tests in various sections of the country to bring it to its present point of engineering perfection, careful check was kept on its fuel consumption. In fact, many of the tests were made to accurately determine this.

The tests disclosed that, compared with its predecessor, the engine in the superior Whippet Six showed a notably reduced consumption of fuel despite a

Kelly Balloon Tires Supply Public Need

"There can be no question," says Harry Goeller of the Imperial-Garage, "of the need for a super tire. The acceptance of the Kelly Registered Balloon has proved it. When this tire first came out a short while ago, I only stocked the sizes used by the high priced cars. That's where I was wrong.

"The motorist of today doesn't look upon changing tires on a rainy day as a necessary evil, something as inescapable as buying gas. And this attitude isn't laziness on his part, it is knowledge. Although it is easier to switch tires now than in the old days, he knows it is also unnecessary.

"The regular Kelly has earned the reputation of being a remarkably trouble-free tire, so when the Kelly Registered Balloon was announced, experienced motorists figured it would be the last word in tire satisfaction. And they're right.

"All classes of car owners are anxious to equip with this new tire and my service station at 279 Main street, is fully stocked to meet the demand."

LONG SLEEVES

Eight button length gloves are selling for wear with the three-quarter wide sleeves that some afternoon silk suits affect. For evening there are stunning off-white tones.

VEEOL PROVES GREAT SUCCESS IN AIRPLANES

Colonel Art Goebel Explains Excellent Features of Motor Oil

The prominence which Veedol plays and the regard in which it is held as a lubricant for airplane engines is reflected in a statement made recently by Colonel Art Goebel, famous aviator: "I have proved Veedol motor oil in airplanes in all kinds of weather, on all kinds of flights—stunt, endurance, long distance. I use nothing else in my planes or cars. I'm satisfied."

Veedol, with its heavier body, longer life, and super heat resistance, is regularly being used not only by Goebel, but also by many other of the greatest pilots, including Byrd, Chamberlin, Jensen, Rankin, Amelia Earhart, and scores of others. It is also used in the huge German Graf Zeppelin.

This fact is in line with the theory advanced by the Tide Water Oil Sales Corporation, marketers of Veedol, that today the proving ground for motor oils is in the air. For, in the airplane engine, where efficiency and reliability are imperative, Veedol has been tested and found to embody every desirable feature.

The significance to motorists of Veedol's overwhelming success in the air is obvious. If, under the most exacting conditions to be found even in aviation, Veedol has proven best, how thorough its satisfactory must be in the less exacting automobile engine. But exacting or not, the automobile engine gets the same super active service from Veedol as does the airplane.

Dunham Tells of Rapid Gain in Auto Sales

The sensational increase in the sales of Studebaker's new President Eight since its introduction early this year is a direct reflection of its outstanding value in the fine car field, according to E. A. Dunham, Studebaker-Brake dealer here.

"Championship performance combined with remarkable distinction of line and color have carried The President Eight to new sales heights thus far this year, said Mr. Dunham. "Added to these factors is a completeness of appointment which ranks

The President with many cars several hundred dollars higher in price.

"The President five passenger sedan is one of the best examples of The President's outstanding position. Its 115 horsepower

straight eight motor sets an entirely new standard of effortlessness performance. No other car in automotive history has ever established such a record of endurance, brilliant performance as The President's achievement in traveling

You pay for KELLYS— why not have KELLYS?

SOME people buy "mail order" tires under the impression that they are saving money. Others buy Kelly-Springfields—and don't have to pay any more for them.

Contrary to general belief, Kelly-Springfield tires are not high-priced. Their reputation has given many people the idea that because Kellys are so good they must cost more.

If you'll drop in and see us the next time you are in the neighborhood, we believe you'll be surprised to learn how Kelly prices run.



Besides, we can make you a trade-in allowance on your present tires—and put the new ones on for you.

When you can buy the best for the same price, why be content with less?

Imperial Garage

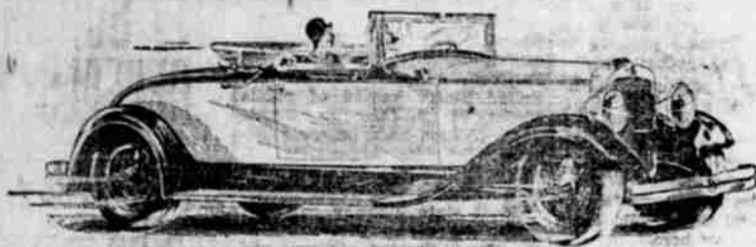
239 MAIN

PHONE 130

KELLY SPRINGFIELD TIRES

NASH '400'

Leads the World in Motor Car Value



3 Cabriolets

STANDARD SIX Delivered, Fully Equipped SPECIAL SIX Delivered, Fully Equipped ADVANCED SIX Delivered, Fully Equipped

\$1138.00 \$1563.00 \$1906.00

Lower, Delivered, Completely Equipped Prices

FOR those who like to be out and going—top down—nothing but blue skies above—Nash designers built three smart "400" Cabriolets.

With the top up and windows raised, they are luxurious closed cars—with the top down and windows either down or up, they are smart open cars. All have a big, comfortable, roomy rumble seat.

The Standard Six Cabriolet is one of the most popular cars in its price field, because it combines the smart open-enclosed motoring vogue with Standard Six performance superiority.

It has a big, high compression, 7-bearing motor for power and speed—"400" steering for the world's easiest driving—Lovejoy hydraulic shock ab-

sorbers, for cushioned smoothness over all kinds of roads.

The Special and Advanced Six Cabriolets are distinguished by such "400" features as the new Twin-Ignition motor, Bijur Centralized Chassis Lubrication—press a pedal, your car is oiled—Lovejoy and Houdaille hydraulic shock absorbers.

And, every "400" model comes from the factory equipped with bumpers, hydraulic shock absorbers, spare tire lock and tire cover, at no extra cost. Some dealers, charge as much as \$50 or \$60 extra for bumpers alone.

Compare these Cabriolets to others, then compare their fully equipped, delivered prices. You'll see the advantage in buying a Nash!

Delivered, fully equipped, price range on 23 Nash "400" Models, \$1090 to \$2349

Templar Motor Co. Inc.
11th and Klamath Phone 1010

Make Performance your Yardstick!

This dashing Buick reveals clear-cut supremacy in performance. Get behind the wheel and Get the facts!

BUICK MOTOR COMPANY
FLINT, MICHIGAN
Division of General Motors Corporation



BUICK GARAGE

H. E. HAUGER

1330 Main Street

Phone 42

WHEN BETTER AUTOMOBILES ARE BUILT, BUICK WILL BUILD THEM

Advanced Engineering in the New 612



You will find the same principles of modern design and advanced engineering in the new Model 612 that distinguish the larger Graham-Paige sixes and eights. We invite you to examine the 612 for surplus value, and to make your own comparisons.

Car illustrated is Model 612, six cylinder, five passenger, two door Sedan
\$895 in factory, special equipment extra.

Joseph B. Graham
Robert C. Graham
Ray A. Graham



Arcade Garage

Harold H. Wires

221 South 11th Street

Phone 1636

GRAHAM-PAIGE