

City Edition

The Evening Herald

The Old Home Paper

ASSOCIATED PRESS LEASED WIRE

Herald Advertisers Appreciate Your Trade

KLAMATH PINE IS THE STANDARD OF THE WORLD

Price Five Cents

KLAMATH FALLS, OREGON, MONDAY, FEBRUARY 21, 1927.

Twentieth Year—Number 5961.

STORM HITS OREGON

Editorial

Twiddling thumbs and spitting at a crack have ceased in the county court chambers.

The action Saturday when the court in a friendly resolution demanded of Assessor William Lee that he "shoot" or give his reasons why he doesn't, can receive only praise from people who believe in public business being dispatched.

The Edgar & Cullison cruise made under the old county court apparently has not been placed on the tax rolls. Assessor Lee said at an open meeting he had no intention of so extending it because the cruise was costing the taxpayers too much money.

Just what Assessor Lee means probably will develop now that the court has urged him to act, thus justifying him in presenting his views in detail.

Judge Goddard is exactly right when he says, "The Edgar & Cullison cruise either is worth something to the taxpayers or it is worth nothing and the thing to do is to find out about the matter." He stands firmly for cruising the timber of the county, just as the other members of the court do, but he wants a fair and impartial cruise and he wants the cruise to be made as economically as possible.

There is no question about his positive demand that the timber be cruised. In this the Judge is eminently fair for he takes the stand that all property of the county should pay its part of the tax burden. He has no disposition to "rob the timber barons," neither does he desire to persecute a man because he happens to own timber. Most certainly he is not in favor of penalizing the timber and lumber industry to a degree that profitable operation cannot be engaged in here in Klamath county.

The dilly dallying that has been going on over this cruise is exasperating. The timber owners, appearing weeks ago before the court in open session, made strong (Continued on Page Two)

LAKE PLAN OF GRAZING IS FAVORED

District Board Urges Officials To Take Action

Directors of the Klamath Irrigation district Saturday afternoon placed their shoulders behind the movement for creation of lower Klamath lake into permanent grazing area to be used as an adjunct to the irrigation district.

In a resolution passed by the board, Secretary of Interior Hubert Work and Commissioner of Reclamation Mead were asked to convert the huge grazing area into a permanent grazing unit for the use of district farmers.

Under the arrangement advocated by the board and a special committee of livestockmen and sheep men, permits to use the lake bed for grazing would be issued by the government and the farmers of the district would have a preference over other applicants.

A copy of the resolution was sent to Mr. Work, Mr. Mead and the Oregon delegation in congress.

ROAD TO BEND CLOSED TODAY

Automobile traffic from Fort Klamath Junction to the other side of Sand Creek mountain, has been stopped because of heavy snow fall.

The storm has not affected the road between Klamath Falls and Fort Klamath, it was said.

A large force of men are at work on the affected section—one mile high—and with plows are clearing the road for through traffic between Klamath Falls and Bend.

This is the first time the road has been closed this winter.

"Elks Gazoot" Published In Herald Today

Today the Evening Herald, accompanied by the "Elks Gazoot," a delightfully edited breezy Elks publication, enters practically every home in Klamath county due to a special edition of the Herald and the "Gazoot" to carry the news of the big Elks' show "Purple Flashes" to be given on February 24th and 25th at the Pine Tree theatre.

"The Gazoot" is a product of Elks wit and humor just as "Purple Flashes" is a home talent production, and the fun that both will give the Klamath county public will be greatly enjoyed.

Klamath Elks only give a show occasionally but when they do put one on they do it right. Mr. and Mrs. C. J. McNaughton, known all over the Pacific coast for their talent and theatrical ability, are directing the cast in "Purple Flashes" which is assurance to all that the excellent talent this city has will be brought out in a most pleasing manner.

No one should miss the show. Read the "Gazoot" and get an idea of the fun you will have when you attend the show.

Jewelry Taken In Robbery Of Willits Home

The home of Mrs. L. F. Willits at 505 Klamath was broken into some time Saturday night and old jewelry that has been in the family for many years were stolen.

Discovery of the robbery was made by Mrs. Willits upon her return Sunday from a two weeks trip in California with Mrs. Sam Summers.

Entrance to the home was made through the rear door and apparently for the sole purpose of finding money and jewelry as the rest of the household belongings were untouched.

A number of rings, a watch and chain, Knight Templar's charm and other jewelry which Mrs. Willits prized highly were taken in the loot.

"The antiques could not possibly be of any use to anyone but myself," Mrs. Willits remarked today.

The theft was reported to Chief of Police Keith Ambrose.

Klamath Matron Hurt In Crash

Mrs. M. Motschenbacher of 727 Walnut Street was bruised and cut about the face today, as the result of a collision at about 1 o'clock between her husband's car and that of Ernest Buck, at the corner of 8th and Pine Streets.

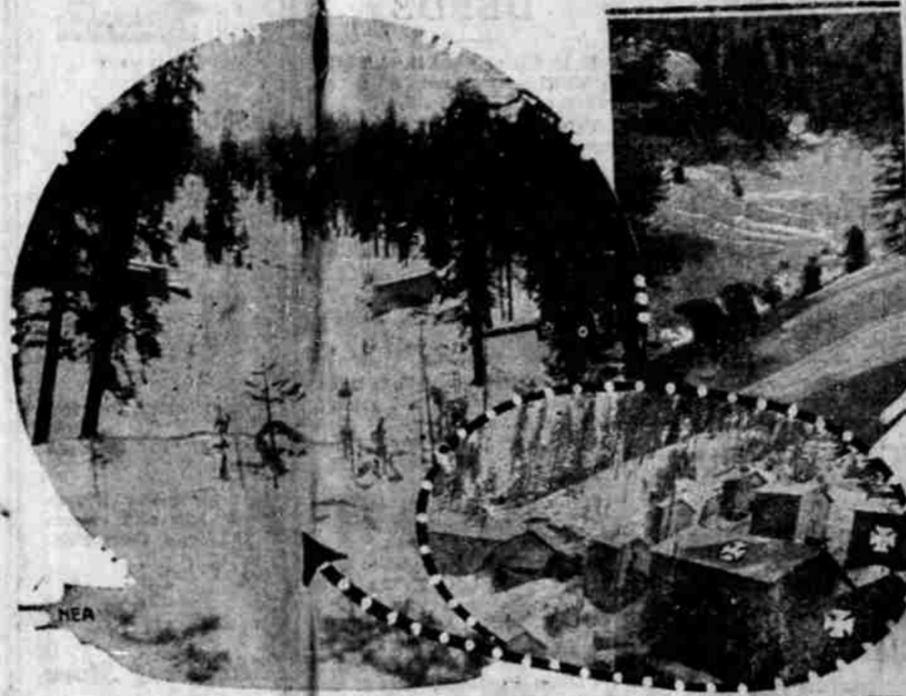
Late News Of Cascade Slide

At a late hour this afternoon, Southern Pacific officials announced that four northbound passenger trains routed over the Cascade line because of slides on the Siskiyou line, were being held up at Crescent awaiting the clearing of a slide from the railroad right-of-way near Cruzette, north of the Cascade summit.

Two more north bound passenger trains are due into Klamath Falls this afternoon and a third and a fourth tomorrow morning, including the Shasta limited.

A small slide in a tunnel near Crescent, was being repaired this afternoon. According to S. P. officials the slide was not serious and could be repaired in a short time.

Thirteen Killed in Mountain Snow Slide



Thirteen are believed killed in a snow avalanche that swept down on Camp 2 of the Southern California Edison Company in the mountains above Fresno, Calif. The picture at the left shows what was left of the camp after two slides had swept across it, carrying wreckage across a ravine onto the slope in the foreground, as shown on one of the trees. Below is the camp as it was, the crosses marking the buildings swept away without warning in the first slide. Upper right, rescuers dig in the snow banks for the bodies of five missing men.

"BUD" HODGES BEGINS TERM

Another Chapter to Old Case in Jackson County Begins

MEDFORD, Feb. 21. (Special)—Marking the close of a prohibition case which commenced nearly two years ago when local county and state officers raided a small wayside stand, known as the "Hut" on the Crater Lake

highway north of the city, seizing a large quantity of moonshine, which had been destined for retail consumption by being sold over the counter, B. L. Hodges, well known Klamath Falls resident, has arrived here to commence a sentence in the county jail of 30 days, which had been imposed upon him on a moonshine possession charge in addition to a fine of \$750.

J. Dawson, also of Klamath Falls, was arrested at the same time with Hodges and was charged with a felony in connection with carrying a weapon while handling liquor. On this charge and on a perjury charge, he was sentenced to the state penitentiary for three years, which time he has already served, the sentence being cut short by good behavior. However, due to various legal technicalities, Hodges never commenced his county jail sentence.

- Ft. Klamath Road Good
• Highway to Fort Klamath is in excellent condition, according to long distance advice this afternoon.
• Reports of heavy snows on The Dalles-California highway in northern Klamath had led to the dissemination of rumors that the Fort Klamath road was in poor condition.

The Sheriff Means Business



Railroad Traffic Is Paralyzed; Passenger Trains Are Rerouted

Rogue River Valley Flooded; Shasta Comes through Klamath Falls; Highways are Closed; Cottages are Washed Away

Klamath early last evening, was struck by the fringe of one of the worst storms in the history of southwestern Oregon. Torrents of rain converted many streets into miniature lakes, basements of homes and business houses were flooded and considerable property damage was incurred.

A serious slide on the Cascade line near Cruzette, north of Crescent has paralyzed southbound rail traffic for 30 hours. Rail authorities believe that the slide would be cleared by this afternoon.

Four northbound S. P. passenger trains, including the Shasta limited and the Oregonian, were routed over the Cascade line. They passed through this morning.

Five Slides. Five slides on the Siskiyou line over the Siskiyou mountains have been reported. They are 50 to 150 feet long.

Telephone, western union and S. P. wires were partially disabled by the storm.

Part of the brick wall on the top of the Eagle pool hall and the Sanitary market on Main between Seventh and Eighth street collapsed last night and fell into the street. One man was struck and slightly injured by the falling brick.

Highway Closed. The Dalles-California highway between the Fort Klamath Junction and a point north of Sand Creek is closed. Five feet of snow has fallen in the past two days.

GRANTS PASS, Ore., Feb. 21. (AP)—Southern Oregon today is taking inventory of loss following the most disastrous flood in 25 years when the Rogue, Applegate and Illinois rivers last night swept out bridges, paralyzed power service, marooned families and cut this city from all railroad and highway communication, with property damage which will total at least \$150,000 in this district alone.

Six Inches Fall. Impelled by six inches of rain in 48 hours and a warm wind which melted snow in the mountains with the headwaters, the streams started rising rapidly yesterday and in a short time the three valleys were inundated. Although many families were marooned, there was no loss of life.

Marooned. It is impossible to leave this city by highway or rail today. An attempt is being made to reach Grants Pass over the Southern Pacific from the north but it is believed that high water in Cow Creek Canyon will make this impossible before tomorrow. Washout of trackage between this

city and Ashland, Ore., will delay train service from the south for at least three days. It will be several days before either the Pacific or Redwood highways can be opened to traffic. It has been impossible to make a check on the highway condition due to failure of all telephone service to outlying sections. It is known that several bridges are out on the highway and that the south approach to the Pacific highway at Gold Hill is out. Slides and washouts block the Pacific highway to the north. At many points the highways were from five to ten feet under water.

Lines Are Out. All telephone lines are out north and south and telegraph lines north are down.

Damage to the Grants Pass Irrigation district results, from the loss of the suspension bridge across the Rogue, which carried water to the lower valley.

Railroad Bridges Out. California and Oregon coast railroad lost portions of bridges over the Rogue and Applegate rivers.

MEDFORD, Ore., Feb. 21. (AP)—Conditions were fast returning to normal today in the upper Rogue river valley, with flood waters caused by rain and melting snow in the mountains, rapidly abating and bright spring sunshine following in the wake of the most turbulent weather in its history.

Abandon Homes. Bear Creek, normally a tiny stream that flows through the center of the business district of Medford, swelled by waters from Immigrant Gap dam, overflowed five blocks in east Medford and forced many families to abandon their homes or move to upper floors. Residential streets became raging torrents when the crest of the flood came about eight o'clock last night. At ten o'clock the flood started to recede and this morning was back in its channel.

South Medford was flooded by the rising waters of Griffin creek. (Continued on Page 3)

Bread and Water Diet Is Sentence Given Local Man

Joe Martinez will exist on bread and water for the next 12 days.

For the third time in the past six weeks, Martinez was arrested by police Saturday, charged this time with disturbing the peace.

"Yes," Martinez admitted this morning to Police Judge Gahagen, "I'm gully."

"You are fined \$25, and 12 day in jail on a diet of bread and water," the police judge announced.

William Young, a negro was arrested with Martinez. He entered a plea of not guilty and was to have been given a further hearing this afternoon.

Late News Flashes

FAVOR FOUR STATE COMPACT. WASHINGTON, Feb. 21.—(AP)—A four state compact between Oregon, Washington, Idaho and Montana over the distribution of water from the Columbia river would be authorized under a joint resolution passed today by the senate.

RACE CRASH FATAL. LOS ANGELES, Feb. 21.—(AP)—Ray Armstrong, automobile race driver, died in a hospital early today of injuries received yesterday when his car failed to make a turn and he crashed into the grandstand at a speedway race.

OKLAHOMA LOSES. WASHINGTON, Feb. 21.—(AP)—Oklahoma was refused a supreme court review today in its controversy with Texas over the location of the eastern boundary along the Pan Handle of Texas, running north from the Red river.

MILK FAMINE THREATENS. WHEELING, W. V., Feb. 21.—(AP)—The Wheeling district was confronted today with the possibility of a milk famine because of a traffic tie-up resulting from the worst storm in twenty years.

WASHINGTON LETTER FRAUD. CAMBRIDGE, Mass., Feb. 21.—(AP)—W. C. Ford, former chief of the manuscript division of the Library of Congress, said today that a letter discovered in Kansas City purporting to have been written by George Washington had been forged during Washington's lifetime with "diabolical intent."