

SHERIFFS FAVOR STUDEBAKERS, IS SURVEY FINDING

Inquiry Made in West Discloses Big Six and Smaller Models Are Much Used

Fifty-five sheriffs and 170 police officials are using the automobile made famous in law enforcement by the Arizona sheriffs, according to partial findings of a further inquiry into the use of motor cars in tracking crimes in the United States. In addition to the use of these cars for auto squads, inspectors, patrol wagons and ambulances. Some time ago it was learned that of the 14 counties in Arizona, supplied their sheriffs' offices with an automobile and in each of these a Studebaker was used. Further investigation has disclosed that this make of car is in use in every branch of law enforcement in the country—federal, state, county and city.

Every Rocky Mountain, Pacific coast and Mexican border has one or more sheriffs depending on their Studebakers to help maintain order. In the Kentucky hills, the Appalachians and New England's mountains the story is the same. And in all of them the endurance of the sheriff's car determines in large measure his ability to catch the man.

State and county police place in Studebakers like confidence. In Maryland, Connecticut and Indiana large fleets are used to patrol the state highways. In the province of Ontario provincial police are supplied with this car.

Game wardens use this automobile to check the overzeal of hunters. Forest and park rangers save tracts of standing timber for future generations by dashing to forest fires and running down poachers of forbidden trees.

Immigration authorities and other federal agents use Studebakers to patrol the borders, and it is the car of national guard officers in several states.

TRIPSMAN HURT

LEWISTON, Idaho—Journeying to an Indian congress in Spokane, Peop Tuo Talpit, hereditary chief of the Nez Perce Indians, was struck down and seriously injured yesterday by an automobile driven by Phillip Crocker of Spokane.

First of 1927 Models to Arrive Here

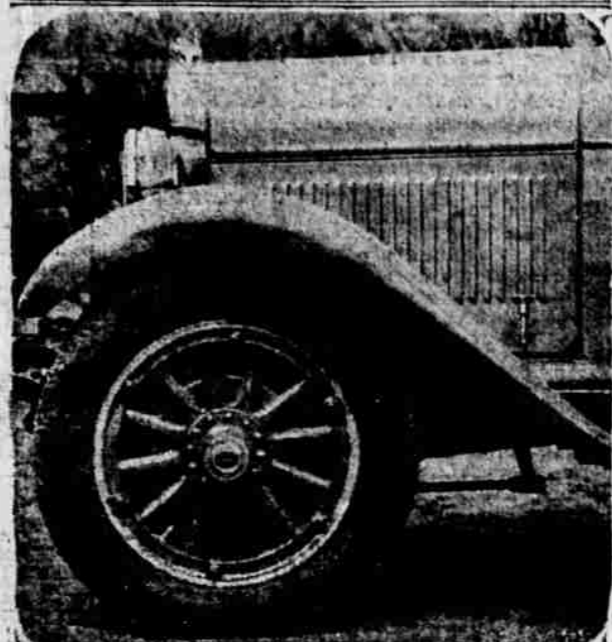
In the lead of the newest types of automobile creations, the Greater Oakland Six, introduced throughout the country this week, embodies 77 important refinements, featured by smart new Fisher bodies in new and striking two-tone Duco finish, engine developments of a vital nature, and the Rubber Silenced Chassis, an advanced Oakland engineering achievement ranking with the Harmonic Balancer, which was introduced to the industry last year on Oakland cars. The Landau Sedan, Sedan and Sport Roadster are three of the several cars on display in the local Oakland show rooms. New Fenders, Hub Caps and Headlights are additional improved features offered Oakland purchasers.



Landau Sedan



Sedan



Showing new Fenders, Hub Caps and Headlights



Sport Roadster

With 77 important refinements added to the high quality of Oakland's present models, the new series of 1927, have arrived in Klamath Falls and are on display at the K.R.R. Garage salesrooms, 820 Klamath. The first arrival was the Sport Roadster, toned down somewhat in color scheme from the jaunty car of 1926. The other car types are arriving each day.

Thought to be one of the most advanced features in motor car engineering, the "Rubber Silenced Chassis" comes out on Oakland's new models for the first time. This

is one of the improvements made especially to increase the riding comfort to passengers and add to the length of life of the chassis, by reducing and eliminating road shock that might be transmitted to the frame, engine, body and passengers.

G. O. P. Plans For Campaign Are Outlined

Everything Fine, Solomon Decision of State Leaders

PORTLAND, Ore., July 13. —(AP) — Endorsing the candidates selected by the republican voters at the primary, and pledging support for them at the November election, the state republican central committee late yesterday adopted resolutions and laid plans for the campaign. The administration of President Coolidge was endorsed, and he was praised for his work in reducing expenditures. The Oregon delegation in congress and National Committeeman Ralph E. Williams were commended.

Phil Metschan, Portland, was elected chairman of the state central committee; Floyd J. Cook of Medford, secretary, and Nathan Straus, Portland, treasurer.

Chairman Metschan was authorized to appoint an executive committee of twenty, including ten members of the state central committee and ten women to have active charge of the campaign.

I. L. Patterson, republican nominee for governor, addressed the meeting, saying he would have no individual manager in the campaign, but would place himself in the hands of the state committee. M. E. Crumpacker, republican nominee for congress from the third district, also spoke.

NASH CAR SALES TAKE BIG JUMP, PORTLAND FINDS

Young Firm, in First Ten Months of Existence, Sells More Than 100

In less than 10 months the East Side Nash company, associate dealer in Nash machines in Portland, delivered its one hundredth Nash car, according to the report of J. E. Maxon, owner and manager.

From the day the company opened its doors at East Couch street and Grand avenue, the business increased month by month, and in June sales were greater than in any month of its existence, which dates from last fall.

Opening of the new Burnside bridge probably has led and will lead even to larger volume, according to Mr. Maxon. The store is within a stone's throw of Burnside street, the busy east side thoroughfare, and but a minute's walk from the bridge itself. The heavy traffic leading from the bridge, much of which turns north on Grand avenue, is expected to carry with it an ever-increasing tide of Nash purchasers.

In the first 10 months the company not only sold the 100 new machines; it also disposed of between 130 and 140 used machines, according to Mr. Maxon.

LOTS OF ROUGE

PHILADELPHIA, Pa.—My, but the girls are using a lot of rouge. The money spent on cosmetics in the country in a year exceeds the salaries of primary and second grade school teachers. If Miss Nanette F. Weeks was correct in her statement to the Universalists' Sunday school convention.

ROOSEVELT IS BROKER

NEW YORK—Archie Roosevelt has become a member of the stock exchange firm of Roosevelt & Son.

CHEVROLET FROM OREGON GOES TO ANTIPODES PORT

PORTLAND, July 13.—When the steamship Parana, loaded with millions of feet of Oregon timber, backed slowly out from her moorings at the Eastern and Western Lumber company's dock at the foot of Twenty-first street a few days ago, she was an object of curiosity to many persons lining the Willamette shore, for natively perched atop the cargo drawn from Oregon's vast forest treasure was a Chevrolet landau sedan. The machine was soon obscured by a heavy canvas tarpaulin, as members of the crew began lashing the car down in preparation for a long cruise, perhaps through periods of stormy weather. The lively interest on the part of observers was fully warranted, for they were permitted to see something that, so far as the memory of man runneth, had never taken place previously on the Pacific coast—the delivery of a car by an Oregon dealer to a point in the antipodes. In other words, Australia had come to Portland for a Chevrolet automobile. And to the Fields Motor Car company of this city goes the distinction of having filled the first order, so far as known here, that was ever placed with a dealer direct by a resident of a foreign land.

Different Systems Found

Moreover, other incidents connected with the unique transaction are of interest quite out of the ordinary. For instance, under statutes governing the operation of motor cars in the southern continent, or the largest island in the world, dependent upon what geography one pins one's faith, vehicles are obliged to pass on the left-hand side when coming toward each other, and this necessitates a right-hand steering gear. In fact, Captain F. Heisterburg, master of the steamship and now owner of the landau sedan, did not at first believe that he would be able to accomplish his desire to acquire the Chevrolet while in this port. Thinking that he would have to wait months after placing his order with the factory for a car with special right-hand steering wheel and left-hand gearshift and take delivery on a future trip at some other port on the Pacific coast.

When this seeming obstacle to a sale was broached to W. A. Groul, general salesmanager of the Fields organization, by A. A. Pawson, the member of the staff who had been discussing the prospective deal with the skipper, Groul sprang to action. "What! Can't buy now because

the steering wheel is on the left side! Why, that's no problem for the workmen we employ—all we need to know is whether Captain Heisterburg is willing to pay to have it transferred to the right side."

Within a few days Fields' workmen had moved the gear into the position required by British law in Australia, installing new floor boards and in other ways turning out so neat a job that they were complimented by the new purchaser. The car was driven to the dock by Groul, where Pawson waited with Captain Heisterburg, and rolled aboard the Parana. Within 30 days from the time the steamship sailed a Chevrolet landau sedan, with the name and address of the Fields Motor Car company of Portland, Ore., in bold white lettering on a black spare tire covering, will roll along the streets of Melbourne, Australia, causing natives to "sit up and take notice."

ATTORNEY REINSTATE

SALEM, Ore., July 13. —(AP) — Morris A. Goldstein, Portland attorney, who some time ago was disbarred for conduct unbecoming an attorney in connection with the forfeiture of a bond in the district court, was today reinstated as an attorney by the supreme court.

INVITE INDIANS

PENDLETON, July 13. —(AP) — Pendleton people hope that as many Umatilla reservation Indians as possible may attend the Indian congress at Spokane July 21-27. The local Indians have an important part in the parade on the 23rd of the month.



Be on the Watch men!

No other time would serve quite as well as July for this price-breaking event.

Where ?

Hot Medical Baths
Massage, sweat baths, electric treatments given, using Hogan's High Frequency Diathermy by an experienced operator graduate nurse, at

The Hot Springs Natatorium

WALL PAPER
All New Stock
Acme Quality Paints
F. R. OLDS
Across from Postoffice Phone 43

CLEARANCE SALE
Summer Dresses
BARNHART'S
McCarthy Bldg. Seventh St.

SPECIAL—For Two Weeks Only
LANOIL CIRCULINE PERMANENT WAVE
\$20.00
Includes Shampoo and Water Wave
Two window demonstrations
Wednesday the 14th; Thursday 15th at noon.
Moe's Beauty Shoppe
MISS ROBERTS, Specialist

What a dog's life some poor old pipes lead!

POOR OLD PIPE! Looks like he's gone to the dogs! He was a good pipe, too. The pick of hundreds. . . But he's never had a chance. All his life he's been abused. . . neglected. . . treated like a dog!

It's no way to bring out the best that's in him. A good pipe must get good tobacco. . . it should get Granger Rough Cut. No other tobacco is so certain to make the most of any pipe.

For Granger is made solely for pipes. . . made of the finest pipe tobacco that grows. . . mellowed by an old-time secret recipe that takes out all "bite" and "harshness" and makes Granger mild. . . spicy. . . and mellow!

Being "rough-cut," too, its large flakes burn slowly and smoke cool. It brings joy into the life of any pipe. Brings perfect pipe-satisfaction into the life of any smoker.

GRANGER ROUGH CUT



The half-pound vacuum tin is forty-five cents, the foil-pouch package, sealed in an air-tight glass wrapper, is ten cents

Granger Rough Cut is made by the Liggett & Myers Tobacco Company