

# THE TRUE MEASURE OF ITS VALUE IS OWNER SATISFACTION

The most obvious proof of Oldsmobile value is increased sales in every section of the land. That is the natural response to inviting prices, winning beauty, quality construction and superior performance.

But the true measure of Oldsmobile value is the enthusiasm of its owners, and to their repeated expressions of whole-hearted praise we frankly attribute a considerable proportion of Oldsmobile's increasing sales.



The car illustrated in the De Luxe Sedan, priced \$1325, at Lansing

DELUXE  
SEDAN  
\$1320  
Delivered

Klamath Valley Motor Co.  
7th and Klamath

## OLDSMOBILE

PRODUCT OF GENERAL MOTORS

### Mainly About People

**MET THIS AFTERNOON**  
The three Delphian groups of Delta Gamma chapter met at the home of Mrs. W. H. Robertson this afternoon.  
"The Roman Principate" was the subject for study.  
On Tuesday afternoon, June 22, the last chapter meeting of this study year will be held at the hotel White Pelican. At this meeting officers will be elected and subscriptions taken for next year's membership.

**CIVIL SERVICE EXAM**  
Two applicants for the junior typists took the civil service exam this morning.

**AT MASONIC LODGE**  
Two master Mason degrees were conferred at the regular session of Klamath Falls Masonic lodge last evening. On Saturday evening six fellow craft degrees will be conferred according to Master R. L. Griffith.

**NO QUORUM**  
Lack of a quorum caused postponement of the city school board meeting last night. A meeting for either tonight or later in the week will be arranged today. C. H. Underwood, chairman of the board, said.

**AT SUGARMAN'S STORE**  
E. A. Anderson, recently of Marshfield and Portland, has accepted a position with the K. Sugarman store. Anderson is an experienced clerk and will serve in all departments of the store.

**RETURNING TOMORROW**  
John Svenson, morning dispatch clerk of the local post office, will resume his position at the office tomorrow. He has spent his vacation at Chinook, Washington.

**ONE DELIVERY EACH DAY**  
On the new Star route between Klamath Falls and Reno which will start on July 1, but one delivery will be made each day. This delivery to leave Klamath Falls about seven o'clock in the morning. The new route will serve more than two hundred patrons.

**MASSEY IS ILL**  
Mr. Massey father of Will and Thomas Massey, is ill at the family home in Mills addition suffering with smallpox.

Thomas Massey box distributor for all Klamath Falls is quarantined at the family home and will be away from his postal duties for at least two weeks. The local office is working short of help and this added shortage will compel the staff to double up in some departments. Assistant Postmaster Griffith asks that everyone be patient until conditions are back to normal once more.

**CARS REGISTERED TODAY**  
Registrations at the triple A booth this afternoon were lighter than those of Monday. E. O. Sawyer, Jr., Berkeley, C. O. Bealeau, Los Angeles, E. H. Johnson, Taft, W. U. McGinis, Los Angeles, Adelle P. Barlow, Piedmont, Frank Stoberg, Fayette, Ida., and Belle Westhine of Mantau, Cal., registered up until late this afternoon.

**REOPENS SHOP**  
Mrs. Campbell has reopened her hemstitching shop at 131 north Fourth which was closed on account of the fire.

**BARNES CHILD ILL**  
Allison Barnes daughter of Mr. and Mrs. Marlon Barnes, shows slight improvement today. For several days she has been seriously ill at the family home suffering with an infected throat.

Jack Pickford, movie actor, claims he recently saw his wife, Marilyn Miller, and had dinner with her.

### Larry Simpson Jazz Orchestra Arrives

Direct from the new one half million dollar El Sincro theater in Salem comes Larry Simpson and has noted eleven piece syncopated orchestra to Klamath Falls.

Musical and dance enthusiasts will have their first opportunity to hear this famous orchestra tomorrow evening at Scandia hall when they will play for dancing. Again on Saturday night the boys will play for the popular Saturday night dance.

The orchestra is enroute east to Chicago where they have signed a year's contract to play on Orpheum and will play at the Apollo theater in the eastern metropolis for their initial opening of the tour which will carry them throughout the entire east. Many local people will recall having heard them this past year on "Pan" circuit.

They opened the beach season at Seaside this summer and wherever they have appeared have gained a reputation as syncopators of jazz.

**BOYLE CHILD UP**  
Friends of Mr. and Mrs. John C. Boyle will be pleased to learn that the condition of little Gertrude is very much improved. The child has been suffering with an attack of heart trouble. Mrs. Boyle and two daughters have been south all winter, hoping to find improved health for the child.

### GO EAST FOR SUMMER

Mrs. Alice M. Cook accompanied by Gordon and Bruce Campbell have left for Minneapolis where they will spend the summer months.

Miss Alice Campbell accompanied her aunt as far south as Los Angeles where she resumed her duties as a nurse. Miss Campbell has been here recuperating from a recent operation.

**HAVE BABY BOY**  
Mr. and Mrs. Orin Peppie of Loretta, are the happy parents of a nine pound baby boy, born this morning at 10:30 at the Private Sanitarium. The Peppies are prominent ranchers of the Dorella section.

**PROVOSTS HAVE GIRL**  
Mr. and Mrs. Elmer Provost of Bonanza are the proud parents of a baby girl born Monday evening at the Private Sanitarium. The child weighed eight pounds.

## KC BAKING POWDER

25 ounces 25c  
More than a pound and a half for a quarter

### Same Price for over 35 years

GUARANTEED PURE  
Millions of pounds used by the Government

### Crumpacker Blocks Longview Span Bill

WASHINGTON, June 8. (AP)—Consideration by the house yesterday of a bill to authorize construction of a bridge over the Columbia river between Longview, Wash., and Ranier, Oregon was blocked by an objection by Representative Crumpacker, republican, Oregon. It was retained on the unanimous consent calendar, which is considered on alternate Mondays.

### COUNCIL FAVORS RAIL CROSSING

Continued From Page One

suddenly that our engineering department has been unable to make the necessary thorough examination of the grounds, and prepare adequate plans for such a crossing. Then, too, the matter must be put up to our directors for their approval and all this would require from two to three months time. It is our earnest desire at this time that no issue present itself that might tend to delay the big development here.

"It is most likely that traffic conditions at the Main street crossing will justify a grade separation in the future, and when that necessity is shown, there is no doubt but the project can be put over in a manner satisfactory to all parties concerned. We have made a traffic count at this point already, and it is certain the Main street grade separation is not as important as the Sixth street viaduct which is absolutely mandatory. In the yards at Sixth street it will be necessary for long trains on many parallel tracks to stand for long periods of time, while at Main street we are putting in an extra track so freight trains can move in and out of the yards while a long passenger train is standing at the depot. A 75-car freight train which is the limit in length, would require three minutes to clear Main street. That would be the maximum traffic delay at that point under the grade crossing plan. According to our traffic survey, such a train would hold up but five vehicles in the three minutes the extraordinary long freight was crossing. The first vehicle would be delayed but three minutes and the last but a few seconds."

**Claims Necessity**  
Dr. A. A. Soule stated that the growth of Klamath Falls made a grade separation project imperative at this time.

Edward Ashurst, attorney for the interested property owners behind the new ordinance, stated that the project was justified right now from a safety standpoint as well as from the congestion angle.

The ordinance proposing to vote an additional \$30,000 city bonds to finance half the cost of the Main street crossing was voted thru by

the councilmen on the theory that funds would be immediately available at such time as the S. P. arrived at a decision on their interests in the matter—thus aiming to obviate any possible delay.

The spirit expressed by all parties concerned last night, was to throw nothing in the way of the general taking up and rushing to completion of the terminal project itself.

Two steam shovels are expected in here this week from the Utah at Grass Lake, to commence excavations and filling of the Klamath Falls main line terminals.

### Four Year Old Boy Is Killed By Auto Stage

### Heavy Car Strikes Child While Turning Around

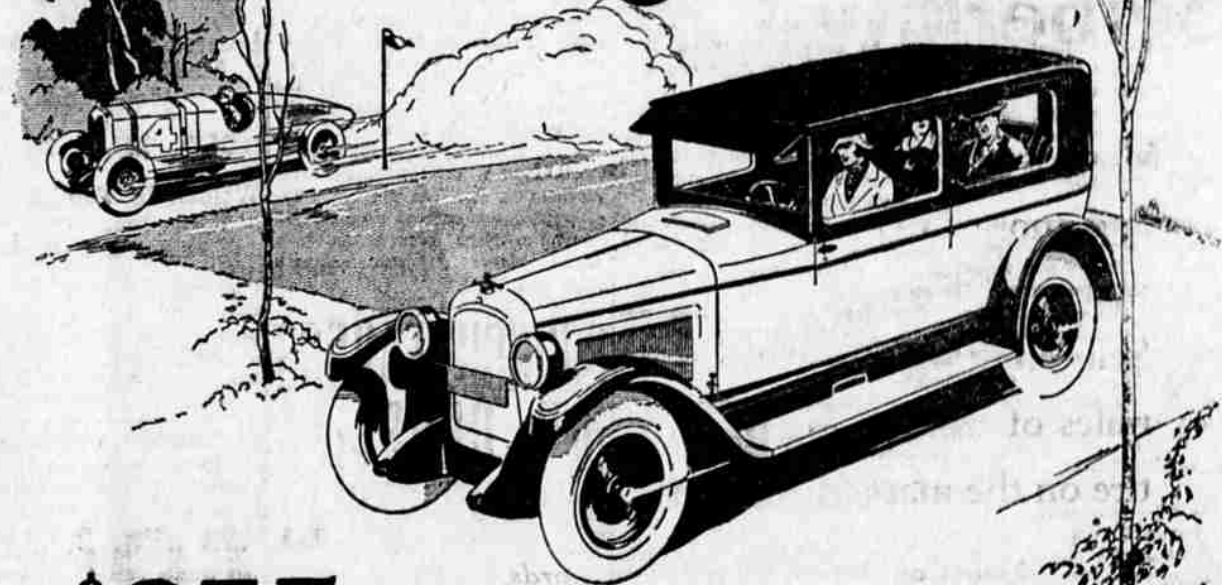
LA GRANDE, Ore., June 8. (AP)—Ken Charles Seltz, 4 year old son of Mr. and Mrs. Vern E. Seltz, proprietors of the five point filling station seven and one half miles west of here on the old Oregon Trail highway, died in the hospital here late yesterday afternoon, the result of injuries suffered when an auto stage of the Motor Transit company ran over him as he was playing beside the filling station.

The stage, an extra called from La Grande and driven by Howard Burnett, 21, was turning around after picking up some passengers, when it ran over the boy. The driver says he didn't see the youngster until five feet from him and was unable to avoid him. No charges have been preferred against Burnett.

The boy was brought to La Grande, death following three hours after the accident while surgeons were attempting to save his life with an emergency operation. The boy's hips and abdomen were crushed. This is the third death on the Higard-Perry stretch of highway in the last three weeks.

NEW YORK — Dr. John Roach Straton, in his Sunday sermon, said Earl Carroll's "bath tub party" was attended by "some well known church people, who were responsible for the whole thing." He attributed the disgraceful orgy to "modernism in religion."

# A Light Six with racing qualities



## \$935

TOURING... \$895  
COUPE... \$895  
F. O. B. FACTORY

The New WILLYS FINANCE PLAN  
Smaller down payments and smaller monthly payments; the lowest credit cost in the industry

THERE is a real touch of the racing car in this Overland Light Six—low hung for straight line drive—low hung body for gravity balance and stability—wind cutting lines to cut down resistance at speed.

The result is a performance value that will open your eyes as you drive this car over the road.

In a quick burst of speed it will out-accelerate any other light six built at near its price or size class. Over steep grades it will out-pull any other light six you can buy for anywhere near the same money.

These are the features you are looking for. And it will out-wear anything in its class—proved by owners records which show lower cost for maintenance than we have found for any other car of its type.

And it has the "Snap" in body design that makes it a distinctive car to own—real lines, real finish, real upholstery and the roomiest body yet offered in its class. Look it over—try it out—then decide for yourself.

# Overland Six

OVERLAND - KNIGHT SALES CO.  
4th and Klamath Avenue Phone 899

### GET RID OF THAT KNOCK!

Does your car have that pounding, disturbing, enjoyment-ruining "CARBON KNOCK"? Does it get choked up and fail to deliver the power and speed, when you want it? If it doesn't, see that it does not get that way—if it does, bring it in and let us straighten out the electrical system.

"One Spark well-timed, is worth three in the timber."

Exclusive Distributors for PHILCO BATTERIES  
W. F. Johnson's Auto Electric Service