


Symbolizing
the policy of the
**R. A. Pilcher Com-
pany, I stand for truth
in advertising and hon-
esty in merchandising. I,
you are probably aware, am
"Courteous Clerk" and from
time to time have an announce-
ment of importance that shoppers
find well worth their reading.
What is it? Can't you tell us
now? No, good friends, I
can't, but I will let you
know in a day or so.
Just watch the col-
umns of this paper
for the Big News.
You'll be sur-
prised and
agreeably
so.
—Courteous Clerk.**



R. A. PILCHER CO.
INCORPORATED
Department Stores

City Park Sale Passes Council Little Discussion as City Dads Approve Ac- tion

Without outward sign of the weeks of controversy that preceded the action, the council last night consummated final details of the sale of Riverside Park property to the Southern Pacific and Northern lines, giving approval to the transaction. Included in the deal was the provision that the city must re-purchase from the Southern Pacific a small tract of land within the park boundaries to serve as a sewage disposal plant for Riverside addition.

City Manager Plan Will Go On May Ballot

With only the dissenting vote of Councilman J. Powell, the city council last night decided to put the city manager proposal up to the people at the May 21 election. If the plan wins at the polls, five commissioners will be picked at large, one of whom will be chosen mayor without power to veto. The city manager will be hired by the commissioners, with all legislative and executive power in the hands of the commission. A report favorable to the proposition was made by an investigating committee composed of E. F. Duffy, Wilson S. Wiley, W. O. Smith, R. E. Crego and Miss Erma Dixon.

ley hospital here and was moved to the family home last week. She was buried in the valley city this afternoon at 2:30. Her daughter, Miss Matquette of this city was with her at the time of her death, as was Mrs. O. O. Winfield another daughter at Tennant, California. She is survived by eight children, Mrs. McDonough and her husband, John, who passed away last November were pioneers of this section and owned one of the large ranches in the Fort Klamath country.

MRS. LEAVITT OPERATED ON
Mrs. Arthur Leavitt of Rocky Point was rushed to the Klamath General hospital this noon where she submitted to a major operation for appendicitis.

Flavor
is
everything
in
breakfast
oats



WHEN you find a person, especially a child, who "doesn't like oats," chances are they haven't tried the right kind. Get Quaker Oats. Once you taste "Quaker" flavor, you are spoiled for ordinary oats. That rich and tasty Quaker flavor is the result of some 50 years milling experience. No other oats approximates it. Quaker milling, too, retains much of the "bulk" of oats. Thus those who eat Quaker Oats find laxatives seldom needed. Combines protein, carbohydrates, vitamins and "bulk" in excellent proportions. Costs the same as ordinary brands. You alone lose when you accept a substitute. Quick Quaker cooks in 3 to 5 minutes. Your grocer has it; also Quaker Oats as you have always known them.

Quaker Oats

Pocket Gopher Due For Siege

To show Klamath farmers the latest methods in poisoning pocket gophers, Ira N. Gabrielson, head of rodent control work in Oregon for the United States Biological Survey will arrive tomorrow morning. Tomorrow, Mr. Gabrielson will conduct a poisoning demonstration on the Obenshain ranch, south of Klamath Falls, and later in the day will conduct similar demonstrations on farms near Merrill. Because pocket gophers undermine irrigation canals and were the principal cause of breaks in the main canal last year, an effort is being made to curb the menace in this district. Unlike their cousin the ground squirrel, pocket gophers dig long run-ways underneath the ground. Often they pierce the bank of an irrigation canal causing a break and damage to the farm. **MRS. McDONALD DIES** Word from Ashland tells of the death of Mrs. Elizabeth McDonough at 10:30 Monday morning at the family home in the valley city. For several weeks the elderly matron who was close to 70 years of age was a patient at the Klamath Val-

KG BAKING POWDER

25 ounces 25c
More than a pound and a half for a quartet

Same Price for over 35 years

GUARANTEED PURE
Millions of pounds used
by the Government

OBITUARY

MARTHA WOODARD

Martha Woodard, 78, wife of the late Charles Woodard, passed away at the residence of her daughter, Mrs. Edgar H. Lawrence, of 1194 Crescent avenue, at an early hour this morning. Besides her daughter, Mrs. Lawrence, two other daughters survive, Mrs. Otis Webb and Mrs. J. W. Pringle, both of Portland.

Ore., and one son, Samuel Woodard, of Rainier, Oregon.

Mr. and Mrs. Chas. Woodard established a grist mill at Keno, 35 years ago, and 22 years ago, they moved to this city, then known as Linkville. She was born at North Castle, Iowa.

Funeral services will be held Wednesday April 14, at 2:30 o'clock p. m. at the Earl Whitlock, Funeral Home, Pine Street at 6th, with Rev.

J. Henry Thomas officiating. Interment will follow in the family plot in Linkville cemetery.

SPECIAL COUNCIL MEET

To grind out routine work in connection with proposed paving improvements, the city council will convene next Friday night in special session, it was decided at the regular meeting last night.

MAINLY ABOUT PEOPLE

NO DANCE WEDNESDAY

According to an announcement made yesterday, no dance will be sponsored at Altamont pavillion tomorrow evening due to repairs. A balcony on the north entrance is being built which will seat more than 150 people.

A rest room with maid service is also to be installed where mothers bringing their children can leave them in charge of the nurse.

The next dance will be held on Saturday evening with the Barney Kropp orchestra furnishing the music.

BROWN RETURNS

H. J. Brown will leave tomorrow morning for Bray Mill where he is employed as filer with the Sprague River lumber company after spending the past week in Klamath Falls.

SCOUT MEETING TONIGHT

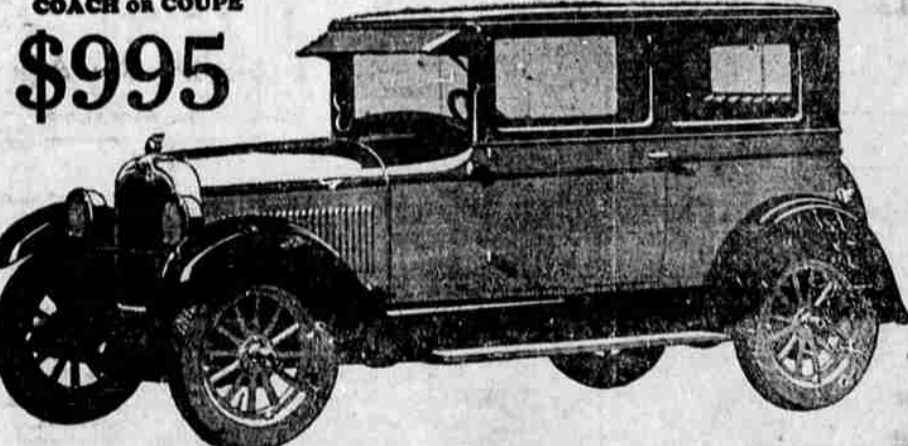
A scout meeting for leaders of those taking the training course in scout work has been called for this evening at 7:30 in the American Legion building.

SULPHUR CLEARS AN ITCHING SKIN



If you are suffering from eczema or some other torturing, embarrassing skin trouble you may quickly be rid of it by using Mentho-Sulphur. Mentho-Sulphur, declares a noted skin specialist. This sulphur preparation, because of its germ destroying properties, seldom fails to quickly subdue itching, even of fiery eczema. The first application makes the skin cool and comfortable. Rash and blotches are healed right up. Rowles Mentho-Sulphur is applied like any pleasant cold cream and is perfectly harmless. You can obtain a jar from any good druggist. Let a trial of Mentho-Sulphur show what this means to you. Send the coupon for it. Clip it now.

COACH OR COUPE
\$995



Exploded! The Old Theory of Low-Cost Design

In developing and introducing the new Pontiac Six General Motors has completely shattered the theory that high quality could not be achieved in a low-cost Six.

From the day of its public presentation, the Pontiac Six has been making giant strides toward leadership in its field—because it is the living expression of quality in every aspect of motor car value.

With the Pontiac Six priced at \$825, it is no longer necessary to accept the limitations of high-priced fours nor those that have hitherto characterized low-priced sixes.

In breath-taking performance, in striking beauty, in luxurious comfort, in staunch construction, the Pontiac Six is the vital embodiment of quality—yet it sells for a price so low that only General Motors could possibly achieve it.

Oakland Six, comparison to the Pontiac Six—\$975 to \$1295 All prices at factory

R. R. R. GARAGE
820 Klamath Avenue

PONTIAC SIX

CHIEF OF THE SIXES

To Those Who Judge Quality by Price

The quality of Ford cars cannot be judged by the prices at which they are sold—because Ford prices are made possible by conditions that are absolutely unique in the automotive industry.

tion routes, fabricated in Ford mills, manufactured in Ford plants—and the finished product is sold to the public through the Ford dealer organization.

From mine to market the Ford car is the work of a single organization. The Company owns and operates the mines and forests that furnish the raw materials for its products. This material is carried over Ford transporta-

Thus there is but a single manufacturing profit on the car.

The following statement, previously made in an advertising message, is repeated here because of its great significance to the motoring public.

"If any other manufacturer endeavored to produce a car similar to the Ford, according to the high standards of quality in material and workmanship used by the Ford Motor Company and with the same tried and proved design, it would be impossible to offer it at anything like Ford prices. And it is well to note that even with less costly design they have not been able to meet Ford prices."

Original Ford Features that Today Make for Greatest Simplicity—Durability—Reliability
Dual Ignition - Simple, Dependable Lubrication
Torque Tube Drive - Multiple Disc-in-oil Clutch
Planetary Transmission - Thermo-Syphon Cooling
FORD MOTOR COMPANY, DETROIT, MICHIGAN

New Prices

COUPE \$500	RUNABOUT \$290	TOURING \$310
TUDOR \$520	FORDOR \$565	

Closed Car Prices include starter and demountable rims. All prices f.o.b. Detroit



WE HAVE NEVER LOWERED THE QUALITY TO REDUCE THE PRICE