

Ouster Move Is Started in Bend

BEND, Ore., Dec. 19.—(A)—Petitions asking an election for the recall of Mayor R. H. Fox and six members of his council were filed here with the city recorder. The petitions bore the names of 711 residents of the city. It was cited that candidates to pit against the seven would not be named until the fifth day period allowed by law for the resignation of the board members has elapsed. The fight here is the outcome of a long controversy over city water bonds recently ordered sold.

Lace dresses on sale at Bee Begin's Dress Shop for only \$5. (Adv.) 14-15

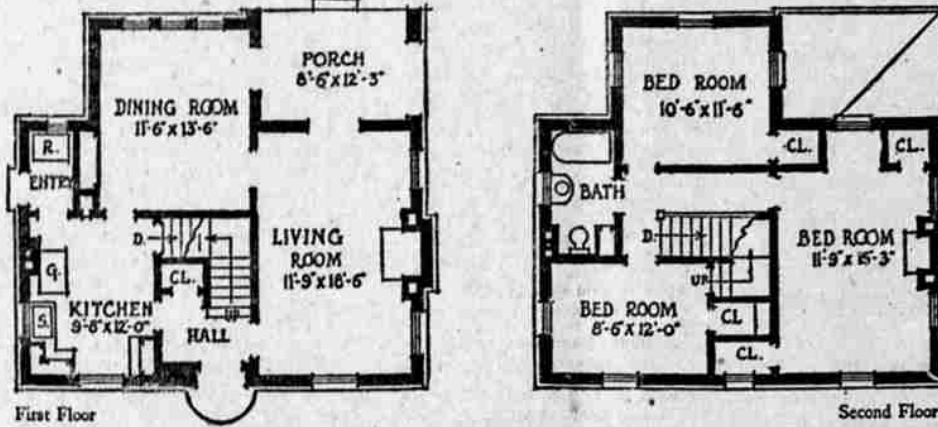
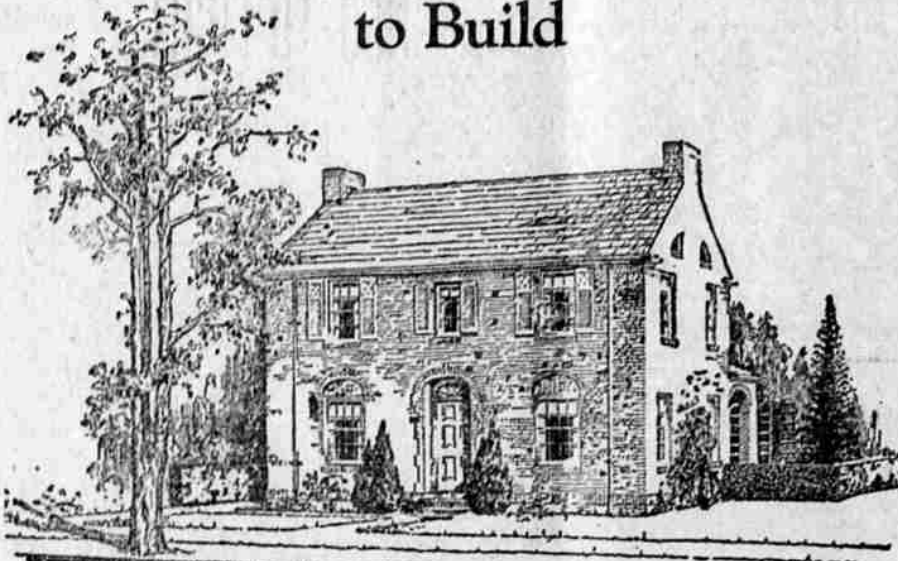
House Working on President Coolidge

WASHINGTON, Dec. 19.—(A)—Colonel E. M. House, for years President Wilson's confidant and appointed by him a member of the Versailles peace commission, is a house guest of President Coolidge at the White House.

GRAIN SCANDAL

WASHINGTON, Dec. 19.—(A)—Argentine Ambassador Pueyrredon has telegraphed George Saunders of Chicago, who made charges Wednesday that Argentine government grain reports had been manipulated, asking for the information on which charges were based for names of Argentine officials whom he accused.

A Colonial House, Economical to Build



First Floor House No. 112 Second Floor Designed by Emery J. Ohler Courtesy, American Face Brick Association

THE builders who developed the various styles of Colonial architecture laid as much stress on economical building as on pleasing design. That is one of the reasons why the types of Colonial architecture continue to be popular generation after generation.

A Colonial house is always simple in its design. But that does not mean that it is devoid of charm. It is after all the lines of a house and its proportions that determine its architectural merit. Its details, such as doors, windows and cornices, of course, can add much to its attractiveness; but only as details and not as the center of interest. That is why gingerbread porch ornaments and stained glass transoms over doors and windows are no longer the vogue. The jigsaws have been laid away, and the longer they stay in storage the better for American domestic architecture.

The face brick house illustrated at once makes an appeal as a substantial, dignified home; and its first impression will prove a lasting one. The wall surfaces will prove particularly attractive in buff or red face brick in a variety of tones laid in Flemish or English Bond with a fairly wide mortar joint.

This house is especially suited to a lot with its frontage on the West, thereby giving a southern

exposure to the long side of the living room and an Eastern exposure to the dining room. The porch has been placed on the garden side, thus giving it as much privacy as a room in the house and also giving it the advantage of overlooking the garden.

The kitchen has been placed on the front of the house, with an entrance on the side. Notice how conveniently it is located to the front entrance as well as to the dining room; and also how conveniently the porch is connected with both living and dining rooms. The first floor is compact in its arrangement, not by crowding the rooms together, but by utilizing all of the floor space to the best advantage.

The second floor has been especially well planned for a house of this size. The principal bedroom is exceptionally attractive with its fireplace and windows on three sides. A sleeping porch could very easily be added by carrying the porch up two stories.

The other two bedrooms are also splendid rooms, one with windows on three sides and the other with windows on two sides. All of the bedrooms are provided with ample closets.

Altogether this is a comfortable and convenient six-room house. The rooms are unusually large for a house approximately 30 feet square.

Livestock Prices Show Some Drops

PORTLAND, Ore., Dec. 19.—(A)—No livestock receipts today. Receipts for the week (approximately): Cattle 3515; calves 640; hogs 8195; sheep 2215.

Cattle—Compared with week ago: Mostly steady; calves and weaners unevenly beef steers \$7 to \$7.85; top \$8.25; cows and heifers \$3.75 to \$5.75; top heifers \$6.35; canners and cutters \$2 to \$3.50; bulls \$3.50 to \$4.75; calves \$5.00 to \$7.50; best weaners \$10 to \$12.00; others \$5.50 to \$9.00; limited movement of feeder steers at \$6 to \$6.50.

Hogs—Compared with week ago: 25c to 50c lower; week's bulk prices light butchers \$12 to \$12.25; top \$12.50 Monday for a part load; heavies and underweights \$12 down. Packing sows \$8.50 to \$9.50; slaughter pigs \$11.50 to \$11.75; feeder pigs 50c lower; mostly \$11.50 a few at \$12.00.

Sheep—compared with week ago: fat lambs 50 to 75c higher; other classes nominally steady; medium to good Willamette valley lambs \$13.50 to \$14.25; medium quality fat ewes \$6 to \$7; nothing offered; one double deck of broken mouth breeding ewes late Friday at \$7.75.

Buy for her a practical Xmas gift at Bee Begin's Dress Shop, 129 So. 7th St., next to Shasta cafe. (Adv.) 15-17

EGGS DROP
PORTLAND, Ore., Dec. 19.—(A)—Eggs 1 to 2c lower; current receipts 30; fresh medium 20 1/2 26 1/2; fresh stand firsts 29 @ 29 1/2.

Christmas story: "Mama, can I hang up one of sister's and let Santa Claus think it is mine?"

CHRISTMAS CHEER

MAKE a Christmas present of a pair of glasses to the eyes that need them. Tell your mother or father or sister or brother to have their eyes examined—that it's a Christmas gift from you.

Dr. H. J. Winters
Eye-Sight Specialist
We Grind Our Own Glasses
KLAMATH FALLS, OREGON

"You can not have unalloyed happiness at any time of the year unless you enjoy an unobstructed vision."
Says Mr. Foresight

Everything in Electrical Fixtures

For the home. Irons, washers, Lighting fixtures and accessories, etc.—see us for expert house wiring.

Link River Electric Co.

A Christmas Gift

For Readers of
THE KLAMATH SUN
and
LUMBERLOGUE

The Klamath Sun will be increased by the addition of a
New Eight-Page Magazine Section
With front page in colors
Effective Tomorrow, Sunday December 20

This section will be a permanent feature of the Sun and Lumberlogue, with others to be added later.

A good present for your family—a good present for your friends. Lumber news, local news, wire news. Magazine section and comic section in colors

\$2.50 Per Year Delivered to You

THE KLAMATH SUN and LUMBERLOGUE
121 North Eighth Street
P. O. Box 1018

At the PINE TREE

"Never the Twain Shall Meet." Peter B. Kyne's enchanting story of the South Sea Islands, will be shown at the Pine Tree Theater Sunday and Monday, according to an announcement made by the management yesterday.

This picture was pictured in Tahiti and Moorea, two of the famous islands of the South Sea group. The cast includes such prominent players as Anita Stewart, Bert Lytell, Huntly Gordon, Justice Johnstone, George Seligmann, Lionel Belmore, William Norris, Emily Fitzroy, Princess Marie de Bourbon and Florence Turner.

Perhaps never in the history of moving pictures has there been a story filmed against such gorgeously beautiful backgrounds as those which appear in "Never the Twain

Shall Meet." Filmed with all the magic and romance associated with life in the South Seas, this play sounds an entirely new note in the literature and drama of motion pictures.

At The LIBERTY

If you like the sea with its cruelty and beauty, if you wish to get away from the ordinary play of society life and the hustle of cities, if you appreciate great acting and wonderful photography, then, by all means, see "The Storm Breaker" starring House Peters which is playing at the Liberty Theater Sunday and Monday. You will not regret going, for you will see one of the most forceful and thrilling picture plays of the year.

House Peters has scored many triumphs during his stage and screen career, but it is safe to say that this splendid actor has never equalled what he has done with the character of John Strong. Dominant and domineering, supplementing his great strength with an equally strong courage, denying the power of God and man, Strong, in the acting of Peters, becomes a living forceful reality. Peters makes you want to crush John Strong, he makes you laugh with him and toward the end he makes you sympathize with him. Only a great actor can do all this, and such is House Peters.

Beauty secret: Not sending your laundry on time will make your shirts look dirty as everything.

Federated Board Fails to Convene

Absence of the president, U. S. Reeder, and the busy rush of the holiday season prompted the postponement today of the regular meeting of the Klamath Federated board, which was scheduled to convene in the chamber of commerce this afternoon.

"The board won't convene again until the first Saturday in January," Lynn Sablin, secretary of the chamber, said today.

Give Your Family A Real Treat at the Club Cafe

Roofing

High Quality Slate Roofing at Mail Order Houses Prices
F. O. B. Our Store
422 Klamath
(Old Dodge Garage)

See it before you send your money out of town and wait for deliveries.

Now is the time to give your old roof a new coat, will add years of service, inexpensive, easy applied. Have it in stock in 5s, 10s and 50 gallons.

A. F. Graham
Office 420 Main St. Store and Warehouse 422 Klamath Ave.
Phone 526

"BEAUTIFUL BUILDINGS are BETTER INVESTMENTS"

Get the Most For Your Building Dollar

See
H. R. Perrin

BUILDING DESIGNS PLANS ADVICE ESTIMATES SUPERVISION

209 Hopka Bldg.
Phone 250 J

Safeguard Your Home

It does you little good to scrape and save to build that home of yours, unless you take steps to see that it is protected.

The one sure way to be protected is to take out fire insurance. We are agents for the world's largest companies. Our rates are reasonable. We give personal service on every claim.

J. H. DRISCOLL
HART BLDG. Surety Bonds PHONE 432
Life, Fire and Auto Insurance