

NATRON CUT-OFF JOB COMPLETED BY NEXT SUMMER

First Through train will Whistle by Klamath Falls in 1926

The first through train from San Francisco to Portland will whistle and clang its way through Klamath Falls in the summer of 1926, according to word received here today from Major A. E. McKeen, engineer in charge of construction of the 108 mile line of railroad from Kirk to Oakridge. For, by next summer, the Klamath Falls-Eugene section of the S. P. railroad will be ready for traffic.

Representing a cost of \$36,567,000 the new line will be one of the most scenic in the world. It will skirt the blue mountain lakes, traverse mountain ranges and plunge through the coolness of pine and fir forests. It will, S. P. officials say, be the main line between San Francisco and Portland.

An idea of the stupendousness of the project is gained by consideration of the fact that construction companies, to transport supplies to Odell lake were forced to build a road from Oakridge to the lake at a cost of \$200,000. This road will be utilized by the public following the completion of the new line. Principal construction concerns involved in the immense project are the Utah Construction company, Henry McFee company, Wrenn & Grough and Hallett & Winters.

Steel has now been laid since the start of construction in February, 1924, to a point 18 miles above Oakridge. The railway company expects that this will be completed ten miles farther before the severe mountain winter weather halts operations. An army of men—2,600 in a score of construction camps—is now working night and day on the project. It is planned to complete the grading and tunnel work before winter, so that the line may be finished by next summer.

Five of the 19 tunnels have been completed. Construction on some of the others is going ahead with remarkable speed in as many as six "faces" at once. The Kirk-Odell section, which is longer than the Oakridge-Eugene section, is nearing completion and will be ready to link up with the latter section by the time the line is finished.

The line piercing the heart of the Cascades will bring Eugene 195 miles closer to Klamath Falls. The maximum grade will be cut from the present grade of 3.3% in the Siskiyou mountains to a 1.8% compensated grade. The 3000 foot climb to the summit of the Cascades is made in 75 miles, and it is approximately this much farther to Kirk, where the line was discontinued 10 years ago.

TOLEDO, Spain—There's to be a lance 500 feet long in a monster statue of Don Quixote, which it will take seven years to erect, near the birthplace of the prototype of his lady love Dulcinea.



He'll enjoy this gift!

There's a gift value in the CROWN ARMY SHIRT far beyond the cost—a gift of free and easy relaxation, of outdoor protection, of service. The Crown Trade Mark says "Full Value!" \$5

GREENBAUM, WEIL & MICHELS
Makers - SAN FRANCISCO



GROVE WINS IN GARBAGE FIGHT

(Continued from Page One)

posed law once again, to read that if the restaurant men were not satisfied with the service and prices of the successful bidder for the garbage contract they could withdraw their patronage, join together in an association, and dispose of their garbage themselves.

It was Mayor Goddard who at the time of the garbage contract from four to two years.

The proposed contract read that if the service of the successful bidder for the first two years was successful, that the council could be empowered to let the contract for another two years without advertising.

Mayor Protests

"I don't feel that the council should give any one job to any person or concern for four years without advertising for bids," he said. "I will not put my name to any ordinance that gives the council that power."

"To be on the safe legal side, it would be necessary to exclude the phrase empowering the council to let the contract for four years," City Attorney Carnahan said.

And that is what the council finally did.

Grove announced to the council last night that if he was the successful bidder for the garbage contract, that he would provide a free garbage dump ground for Klamath Falls residents.

Chevrolet Will Make New Record This Month

Before the end of December the Chevrolet Motor company will establish a new record for the entire automotive industry by attaining a production during the year 1925 of more than 500,000 passenger cars and trucks.

This production for a single year never before has been approached by any other manufacturer of selective transmission automobiles. This year Chevrolet will exceed its previous record production by 60,000 cars.

The achievement of a half million production in a single year culminates a series of records set by

the Chevrolet Motor company during 1925. Among these was the building of the two millionth Chevrolet which came early in September from the assembly lines of the central factory at Flint, Michigan. This record production of 2,000,000 cars has been achieved by no other manufacturer of three speed transmission automobiles.

The half million Chevrolet total for this year represents a greater number of units than was built by the company during the entire first eight years of its existence. Chevrolet's total production to date is greater than the number of cars built by all automobile companies during the first 29 years of the industry.

The phenomenal 1925 total is the result of a series of record-breaking months during which production consistently remained far above the previous marks for corresponding periods in other years. Month after month tentative production schedules proved inadequate to the requirements of the Chevrolet sales department. Ignoring previous seasonal declines, public demand continued unabated through the autumn and into the winter. The tentative production schedules were increased and the factories then proceeded to surpass even the revised schedules.

At The LIBERTY

In "Everyman's Wife," which plays tonight at the Liberty Theater, Maurice Elvey has taken a real story

Dinner Dance

at the White Pelican Hotel

Wednesday Evening Bud Lynch's White Pelican Orchestra

Dinner \$2.00 including cover charge

Dancing from 6:30 to 12:00

from life and created a motion picture of tremendous dramatic appeal. It is a story that might be written about any American family, and it drives home with unrelenting force the danger of suspicion.

With a splendid cast, including Elaine Hammerstein, Herbert Rawlinson, Dorothy Phillips, Robert Cain and Diana Miller, the picture tells the story of a wife who is led to believe that her husband is unfaithful to her.

At the PINE TREE

That Reginald Denny is one of the foremost light comedy stars of the screen cannot be denied after seeing "California Straight Ahead" which plays at the Pine Tree theater tonight.

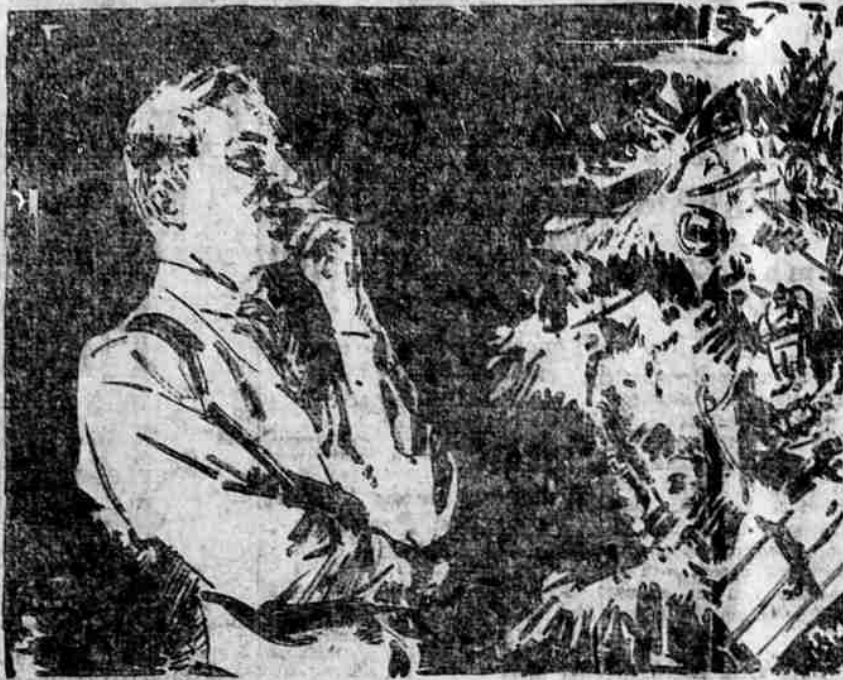
Presented with an unusual story, and many opportunities for clever comedy bits, Denny gives one of the most delightful performances of his screen career. Even his portrayal of the hypochondriac in "Oh, Doctor!" is rivaled by his performance in this latest farce.

The situations on which "California Straight Ahead" are based are intrinsically funny, because they chronicle an event painfully familiar to almost every one—a long motor trip. Denny in this picture is represented as a young man making a cross-country tour in a palatial motor bungalow and the adventures and mishaps which occur are productive of seven reels of delightful comedy.

MARKETS

PORTLAND, Ore., Dec. 8.—(P) —Cattle steady; receipts, cattle 3160 (241 direct or through); calves 290; steers, good \$7.85 to \$8.25; medium \$6.75 to \$7.85; common \$5.50 to \$6.75; canners and cutter steers \$4.50 to \$5.50; heifers, good \$6.00 to \$6.50; common and medium \$4.50 to \$6.00; cows, good \$5.75 to \$6.00; common and medium \$3.50 to \$3.75; canners and cutters \$2.00 to \$3.50; heifers, good \$5.75 to \$6.00; common and medium \$4.00 to \$5.75; cows, good; \$5.25 to \$5.50; common and medium \$3.25 to \$5.25; canners and cutters \$2.25 to \$5.25; bulls, good beef (yearlings excluded) \$3.75 to \$4.50; common to medium (canners and hogs) \$3.00 to \$3.75; calves medium to choice (milk feds excluded) \$7.00 to \$10.00; culls and common \$5.00 to \$7.00; yearlings, medium to choice \$10.00 to \$12.00; culls and common \$5.50 to \$10.00. Hogs steady; receipts 2170 (661

When it's Christmas Eve—and the glistening tree is ready and trimmed with gifts and toys—when the peace and good cheer of Christmas are almost here—have a Camel!



Camels represent the utmost in cigarette quality. The choicest of Turkish and domestic tobaccos are blended into Camels by master blenders and the finest of French cigarette paper is made especially for them. Our highest wish, if you do not yet know Camel quality, is that you try them. We invite you to compare Camels with any cigarette made at any price.

WHEN the happy work of Christmas Eve is done. And the clock calls the approach of midnight. When the gifts and toys are in their place on the children's tree—have a Camel!

For to those who think of others there is no other gift like Camel. Camel makes every great day greater, increases the gladness in giving, makes life's anticipations brighter. Before Camel, no cigarette ever was so good. Camels are made of such choice tobaccos, are so skilfully blended, that they never tire the taste, or leave a cigarette after-taste. Into the making of this one cigarette goes all of the skill of the largest tobacco organization in the world.

So on this Christmas Eve, when your work for others is done—when you're too glad for sleep with thoughts of tomorrow's happiness, oh, then—taste the smoke that every day brings contentment to so many millions. Know the mellowest mildness, the most rich and fragrant taste that ever was put into a cigarette.

Have a Camel!



It is well to remember your few closest friends with a supply of Camels for Christmas Day and the days to come. Get your Camel cartons now and then they will be ready! R. J. Reynolds Tobacco Co.

Wood

BLOCKS—Our blockwood is ample for the present. We are taking part off the yards. DRY SLAB—Our dry slab is not entirely dry, it is good for the heater, but not for the cook stove.

LMB WOOD is first class dry timbs and tree tops. It is dany wood for heater, furnace or fireplace.

COAL—Sure, we have coal. Lump coal, best on the market. SERVICE—Just a little behind with deliveries. Order early.

Wood—Coal & Fuel Oil

PEYTON & CO.
"WOOD TO BURN"

601 Main Phone 535

Quickest Hot Cereal



You're just about 2 minutes away from breakfast when you reach for a package of New Style H-O Quick Cooking Oats.

The new cereal with the wonderful "baked in" flavor. Toasted oat flakes that cook into granular oatmeal. Smooth—firm in texture—never sticky or pasty.

And healthful! A wealth of energy-building carbohydrates, tissue-building proteins and vitalizing minerals are in every dish.

That "all-night cooked" flavor in only two minutes



FOR MORE THAN 30 YEARS MAKERS OF QUALITY PRODUCTS
H-O HONEY'S OATS
HICKS'S CREAM FARINA
HICKS'S CREAM RICE
HICKS'S CREAM MACARONI
HICKS'S CREAM PASTA