

Hudson Coach \$1385

Delivered to Your Door

Make This a Hudson Christmas



For you and yours. It's a Christmas pleasure for all the family... strong as you have. Just think—a Hudson Coach costs less than half the former selling price of the open models. For a six cylinder car, all the world bows to

HUDSON Acme Motor Co.

Hudson — Essex — Cadillac

SMALLER FORCE IN RECLAMATION OFFICE IS PLAN

Fewer Construction Projects Makes it Necessary to Cut Down Size

Because there are no large construction projects in view the engineering and office forces of the local reclamation office will gradually be cut down, to meet the smaller demands of irrigation districts in Klamath.

"There is no secret about the matter," W. D. Newell, project manager of the Klamath Irrigation district, said this morning. "There is no use in retaining a large force when there is no particular use for it. Some months ago two engineers severed connections with this office and today T. R. Smith, connected with the engineering force, leaves for American Falls, Idaho, where he has been transferred to a reclamation project in that section."

Mr. Smith, who has been connected with the local reclamation for three years, will probably assume a position in American Falls as hydrographer.

"It does not necessarily mean that there will be a number of changes in the near future," Mr. Newell explained. "But it does mean that when the opportunity presents itself to switch members of the force to a new project to their advantage, it will be done."

Malin Civic Club Seeking Settlers For New District

With nine thousand acres of land reclaimed by the Shasta View and Malin irrigation districts ready for the plow in the spring of 1926, the Malin Commercial club Monday night directed its efforts to securing settlers for this productive area. To that end W. C. Dalton, Malin rancher, asked and was granted the hearty support of the Klamath County chamber of commerce at a meeting yesterday noon of the chamber board of directors.

Next spring will see the land for the first time served with water pumping plants which will boost the price of the land from \$30 to \$50 an acre, according to Mr. Dalton.

Council Denies License to Pool Room, Not Hotel

It was the Arcade pool room, not the Arcade hotel that was refused license to operate in Klamath Falls by the city council Monday night. An error in the article last night reporting the council meeting sets forth that it was the hotel which was refused the license, whereas it was the pool room. In all justice to the Arcade hotel, which bears an exemplary reputation in the community and state, and in justice to its proprietor, Chris Blanas, the Evening Herald takes this opportunity to correct the mistake. Mr. Blanas has nothing to do with the pool room.

Applegate Leaving For Diamond Jubilee

One of Oldest Subscribers of Oregonian in the State

Having read The Oregonian for more than 70 years, Captain O. C. Applegate with Arthur Brown of Medford, plans to leave for Portland to attend the Diamond Jubilee of the well known paper on Friday. All "old timers" throughout the state have been invited by The Oregonian to attend the celebration, at which time a contest will take place to find who really is the oldest reader.

More than 75 years have elapsed since Thomas Dryer was offered a position in the Hawaiian Islands, and being owner of The Oregonian, then just a small four page paper, he at first hesitated leaving, but finally decided to turn the paper over to his former, H. L. Pittock, for back wages which he had been unable to pay. Today the paper is one of the leading newspapers on the western coast.

Photo Contest of Scouts Ends Soon

The Photo Contest of the Boy Scouts of Klamath county will be officially closed on December 15th, according to announcement made today by Scout Executive, E. O. Nord. Pictures as small as post card size will be admitted, but must be mounted.

The La Vogue Store 8th and Main Streets



ASTOUNDING DRESS VALUES

Beautiful shades and the latest modes characterize these lovely dresses. They come in both silk and wollen materials and are very unusual offerings at

\$12.50—\$19.50—\$24.50

A wonderful line of dainty handkerchiefs is now being shown. These will make exceptional Christmas gifts. We also carry a very complete line of sweaters.

MILLINERY REDUCTION

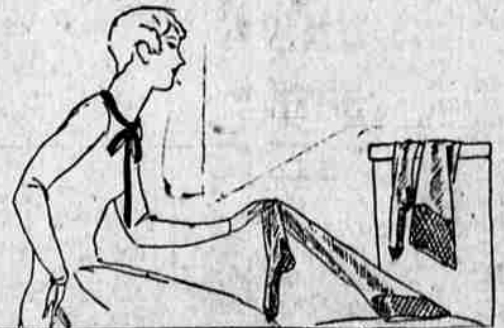
\$3.95 — \$5.95 — \$7.95

There's a long winter ahead—and velvet is the vogue. A timely opportunity to buy a high priced hat at a low figure. All are velvet of this season — small and large hats.



Advanced styles in Satin Hand Made Hats for holiday wear

\$4.95 to \$12.50



HOSIERY — Rayon Ipswich Hose, in all the late shades, 2 pair for \$1.25

Ipswich DeLuxe Hose

In all the desirable colors, 3 pairs \$2.75 to box. Per box

Kismet Pure Silk Hose

In heavy and medium weights. All \$4.50 popular shades. Box of 3 pair

Fine silk chiffon hose, 3 pair \$5.75

Now is the time to buy your Christmas Hosiery. What gift can you make that combines more beauty with real usefulness?

For style and economy, IPSWICH and KISMET HOSIERY are unmatched. Even though you pay twice or three times as much for your hose as you will pay for these two well known and nationally advertised brands, you will get no better looking or more serviceable hose.

We invite our new customers to take advantage of the remarkable prices shown above. We are confident that you will purchase no other brand in the future.

Merchants' Bureau Meet Monday Night

Training of employees, a subject which has interested every merchant of Klamath Falls, will be discussed Monday evening at the monthly meeting of the Merchant's Bureau in the chamber of commerce. Merchants will convene for dinner, which will be followed by a round table discussion.

Community Chest Quarters Will Be Opened Tomorrow

After a series of unavoidable delays, the Community Chest headquarters in the new Smith building, Fifth and Klamath, will be opened some time tomorrow, it was announced today by Chris Barnastable, general chairman of the committee. The work of installing the heating system will be finished today and painters will work tonight putting a coat of paint on the floor so that the quarters will be in readiness. The telephone has already been installed.

With the opening of the quarters the Community Chest workers will speed up their work in order to complete plans for dispensing the needed charity on Christmas day and during the winter months.

\$500 IS ADDED TO CHURCH FUND

Another \$500 has been added to the dollar-for-dollar drive of St. Paul's Episcopal church through the generous donation of an acre tract of land at Altamont, by the Wishard Realty company of this city. The acre was turned over to Walter West, treasurer of the drive, who has secured a buyer for the land, at the above stipulated price.

In the neighborhood of \$1500 has

Game Body Will Make Inspection Of Klamath Lake

Dissatisfied with second hand reports on the advisability of re-flooding lower Klamath lake to create a wild game bird reserve, the state game commission early next week will make a personal inspection of the reclaimed land, according to word received here last night. The commission is expected to arrive here Monday night and to remain until the middle of the week.

With William Finley, ardent advocate of re-flooding the lake, now a member of the commission, the game commission has been seriously considering the project but is as yet undecided as to whether they would advocate or oppose such a move.

Building Record May Be Shattered

Unprecedented activity in building during the late fall and early winter months may set a new annual building record for Klamath Falls, it was announced yesterday from the police judge's office.

With but \$34,022 necessary to equal the 1924 total, and still one month to go, a feeling of confidence prevails in the city hall that the new record will be established.

For the 11 months of 1925 the total amount invested in Klamath Falls building was \$1,648,847. For the entire year of 1924, the total construction investment was \$1,682,879.

BOUDOIR PILLOW DISPLAY

Taffeta and crepe boudoir and davenport pillows made by a number of the employees of Moe's store are today attracting much attention by the matrons of the city who are looking for Christmas suggestions. From the vivid to the pastel shades the pillows make an unusually attractive window.

Buy her a practical Christmas gift at Bee Begin's Dress Shop, 129 So. 7th St. (Adv.) 2-5

Legion Nominates Officers for Year

O. D. Mathews will be commander of the Klamath Falls post, American Legion, for the next ensuing year. This was determined last night when he was the only candidate nominated for this place at the regular meeting of the legion. The rest of the slate was nominated as well without any opposition, except for the three members of the executive committee, for which there were 16 nominations. The nominations follow: Adjutant, T. D. Case; first vice commander, A. D. Collier; second vice commander, A. A. Fidler; finance officer, George M. Barth. Executive committee: Linn W. Nesmith, F. R. Olds, H. E. Getz, Dan Gramp, Fred Hellbronner, H. S. Mathews, Lydia Fricke, L. W. Crawford, Carl Schubert, H. E. Lloyd, L. K. Porter, Bogus Dale, E. M. Igl, L. C. Mueller, R. Mot-schenbacher and Syd Abbott.

Dinner DANCE at the White Pelican Hotel Tonight Bud Lynch's White Pelican Orchestra Dancing from 6:30 to 12:00 Cover charge after 8:30 \$1 Dinner from 6:00 to 8:30 One Dollar and a Half

Richardson Springs "The Home of the Soft Shirt" Near Chico, Butte Co., California A wonderful place in winter for any one seeking health. Steam heated hotel. Housekeeping or camping. Address: Lee Richardson, Chico, Calif.