

# There Is a Vast Difference



between a regular wood burning furnace and a furnace that will burn wood.

We specialize in wood burning furnaces, both piped and pipeless, at prices you can afford to pay.

It Costs You Nothing For An Estimate

## Try Lorenz Co first

on 6th near Main

Phone 371

### Imported and Domestic Groceries

Our complete stock of staple and fancy groceries is open to you each day from 7 a. m. to 9 p. m. including Sundays.

Coffee Roasted Fresh Every Day

### Italian-American Grocery

WE—DELIVER—FREE

NEW YORK—How Elbert H. Gary stopped the matching of twenty dollar gold pieces at United States steel board meetings for fees of absent directors is revealed in Ida M. Tarbell's life of Gary, just published by Appleton's.

### WHOOPIING COUGH

No "cure"—but helps to reduce paroxysms of coughing.

## VICKS VAPORUB

Over 17 Million Jars Used Yearly

### SAVE with SAFETY at your Rexall DRUG STORE



### K ANTLEE K Hot Water Bottle

You save because it is the very finest quality Hot Water Bottle ever sold at the price. You are safe because it won't leak—it's made in one piece, no seams, splices or patches.

Guaranteed for \$2.50 two years

### Star Drug Store

The Rexall Drug Store KLAMATH FALLS, OREGON

### Griffith Will Be Armistice Speaker

George T. Griffith of Salem, past state commander of the American Legion, will be the chief speaker at the ceremonies attending the laying of the cornerstone of the new legion building on Nov. 11, according to announcement today by H. E. Getz, commander of the Klamath Falls Legion post.

Legion members will hold their regular meeting at the court house tomorrow evening to take up further plans for the Armistice Day celebration.

### ANOTHER CUT IS ANNOUNCED

Word has just been received from the Star Motor company factory branch in San Francisco that a substantial price cut has been made in the new standard coupe and standard sedan models.

According to H. E. Hauger, the cut of \$70 on each of these models will make them the lowest priced car in their class with four-wheel brakes and balloon tires as standard equipment on the coupe and sedan.

"The recent price cut on the standard coach," said Hauger "has had a marked effect on our closed car business, and this new cut on the coupe and sedan will add further to the steadily increasing Star sales in San Francisco and other Pacific coast points.

"The Durant factory officials report that these reductions have been made possible by volume sales.

A peculiar thing about short dresses is women seem satisfied with the least they can get for their money.

### Thousands Of Geese Flying To Southland

### Honkers Winging Way Across the Klamath Country

In squads, companies, regiments and divisions, thousands upon thousands of geese from the north have been winging their way across the Klamath country to their favorite haunts in Tule lake.

Flying so high that only the keenest eye can detect the swiftly moving phalanx high in the heavens, the birds have been coming in steadily. The annual flight has proven different than last year. First of last year's flight was earlier and was more concentrated. Klamath residents recall to sleepless October nights when tens of thousands of geese flying low, raised an awful din by their continuous honking.

A few flocks of the great game birds have wheeled and volplaned into lakes and marshes to the north of Klamath Falls, but most kept a steady course for Tule Lake, where they will wax fat in the grain stubble fields.

Owing to the duck epidemic, the geese will seldom be molested in their Tule lake haunts, until the first heavy storm or freeze will wipe out the disease that has killed so many thousands of ducks. Despite the fact that the geese seem to be unaffected by the fowl cholera, hunters are chary of bringing the geese back to their families to eat or to give them to their friends.

### BOARD WILL ASK COURT FOR FUNDS

#### \$3500 Is Coming from County to Meet Expenditures for Fair

Three men, R. H. Bunnell, C. J. Martin and Burrell Short, who compose the Klamath county court, will receive a call this afternoon from determined members of the county fair board who are after \$3500 which the county owes, to meet the expenditures of the Klamath county fair.

The fair board is faced with a \$1500 deficit and needs the \$3500 badly. Whether or not the court can scrape up the needed money, or whether it will just meet the deficit and promise the rest for a future date, could not be ascertained today.

Resignation of Mrs. T. W. Newcomb, secretary of the fair board for the past year, was submitted to the board this afternoon.

### Annual Meeting Of Association Will Be Tonight

How successful has been the county health unit in Klamath county?

This question will be answered tonight at the annual meeting of the Klamath County Health Association, which will open at the chamber of commerce at 6:30 p. m. with a banquet.

It was principally through the activities of the association that the health unit system in Klamath was established, and tonight will be the summing up of the unit activities since its establishment.

When the last of a generous dinner is consumed, talks from various members of the association and of the county health unit, will be given. The principal speakers are to be Mrs. Sadie Orr Dunbar, secretary of the Oregon Tuberculosis Association, and president of state federation of women's clubs, and Dr. G. S. Newsom, head of the Klamath health unit.

### If

when you have tire trouble you want your tires repaired as good as new—have them vulcanized in the best equipped shop in Klamath Falls. Our Heintz Electric Steam Vulcanizers and expert repair men assure you of the best possible results.

### Reed Auto Supply Co.

S. 11th Near Main  
Phone 298

### QUAIL, PHEASANT SEASON CLOSES; TRAPPING OPENS

#### Nearly Everybody Gets One Chinese; Shooting is Generally Good

A life of quiet and security, which was transformed into one fraught with hazards and danger October 15, resumed its former trend Saturday night for China pheasants when the sun set on the last day of open season on the beautiful game birds.

Saturday night also marked the last day, this year, in which one could shoot quail. The season for both quail and pheasant opened October 15 and closed Saturday, October 31. So for 17 days life of a quail or pheasant in Klamath was not worth much.

Hundreds and even thousands of China pheasants were shot down by scores of hunters who scurried over stubble fields and second growth alfalfa, some with dogs and most without. It was the first open season on the pheasant since the birds were first introduced in Klamath several years ago.

Never frightened by gun shot, the birds were easy prey to the Klamath hunters, trained to the quick snatching of the Tule lake hunting fields. But as one day succeeded another, during open season, one heard less and less shooting south of Klamath Falls, until toward the last of the season the usual bombardment which characterized the opening day, had subsided to a few intermittent shots throughout the day.

This was due to three reasons: first the population of China pheasants was sadly depleted by the onslaught of Klamath hunters; second, farmers, annoyed at buck shot rattling on the roof and stinging their livestock, posted their property; and last but not least, the Chinks were wise.

They had learned their lesson, and would either hide till the alert hunter passed or would flush, out of shooting range.

As far as quail are concerned, that premier American game bird, survived the storm better than the pheasants, according to reports. Good shots brought down the limit several times, but it was too hard work. Hunters report that mountain quail are on the increase in Klamath while valley quail are just about holding their own.

Yesterday morning was the opening day of trapping season and Klamath. For four months, the season on fur bearing animals will remain open. Animals that will be the objective of commercial trappers will be martin, beaver, fisher, coon, otter, several species of skunk and bob cats. The season will remain open till March 1.

### BEND HAS FIRST SNOW OF SEASON

BEND, Ore., Nov. 2.—A light snow, the first of the season, greeted early risers this morning and a fresh mantle of snow covered the high peaks of the Cascades. The snow in Bend lasted hardly until the sun came out.

### Mars Record



Here's the fellow who built the team that beat the team that beat every team for five seasons. In other words, here's Orin "Bab" Hollingberry, coach of the Olympic Club football eleven of San Francisco. His segregation surprised the gridiron fraternity by handing the University of California its initial reverse over a five-campaign span the other week end.

# The Toggery

## The Store for Men

### Buckhect Shoes Are Not Made to Sell At A Price

They are made exclusively on a basis of quality and good looks. Regardless of what your needs may be — Buckhects will serve and prove their economy through length of service. Buckhects may cost a little more money, but they will give a lot more wear.

### Buckhect Shoes Shoes of Worth

8 inch Buckhect	\$8.50
10 inch Buckhect	\$10.00
12 inch Buckhect	\$11.00
14 inch Buckhect	\$12.00
16 inch Buckhect	\$13.00
14 inch Buckhect plain toe	\$11.50
17 inch Buckhect plain toe	\$13.00
Aviation last, out side counter	\$13.00
16 inch Buckhect aviation	\$15.00
14 inch Buckhect Apache Paces	\$10.85
16 inch Buckhect Apache Paces	\$11.50

Special for Boys 14 inch original Chippewa water proof stock—and a lot of service \$5.85 Sizes 2 to 5 1/2

The Store For Men—Opposite Liberty Theatre

LONDON.—Real Shetks of the desert are wearing horn rimmed glasses, Oxford bags and loud socks. A novelist, who searched Morocco for color is back disgusted.

### LONE PINE

Mrs. Earl White and son Buster from Jacksonville, Oregon, are the house guests of Mrs. C. W. Lewis this week.

Mr. and Mrs. John Mitchell of Klamath Falls visited at the home of Clyde Barks Sunday.

Mrs. Scott Thompson and daughter and Mrs. J. R. Elliott visited Mrs. Sam Emmon Friday.

Miss Jungjohann, Miss Pierson and Mr. Earl Pierson spent the week end on the Marsh duck hunting.

Mrs. Clyde Barks, Maxine and Billy Barks called on Mrs. Lewis one day this week.

Mr. and Mrs. Lester Schriener left Mr. Enman's, where they have made their home, Friday. They are now staying with Mr. and Mrs. Dick Bennett, Mr. Schriener's sister. The four are going to Rogue River valley the later part of the week to make their homes. Mr. and Mrs. Schriener will be greatly missed by their many friends in this community.

Miss Iva Owen from Mt. Laki visited with her cousin Mrs. Sarah Lewis Sunday.

Mrs. Clyde Kiger entertained a party in honor of her son Estin Wednesday evening. A group of the Merrill high school students was invited.

Sam Enman, Clyde Barks, Bill Bentfield and Mr. Steward were in Merrill Wednesday afternoon.

Mr. and Mrs. J. P. Caman and daughter, Mary, called on R. F. Beasley Sunday.

Mr. and Mrs. J. Taylor and son Jack visited Mrs. Talman Monday. Mr. Stewart was a business visitor in Malin Wednesday.

Mr. and Mrs. Lewis Griffith spent Sunday at the Lewis home. Mr. Griffith is Mrs. Lewis' brother.

Mrs. Tallman called on Fred McKendree Wednesday.

M. P. Galaxneau was in Merrill Thursday morning.

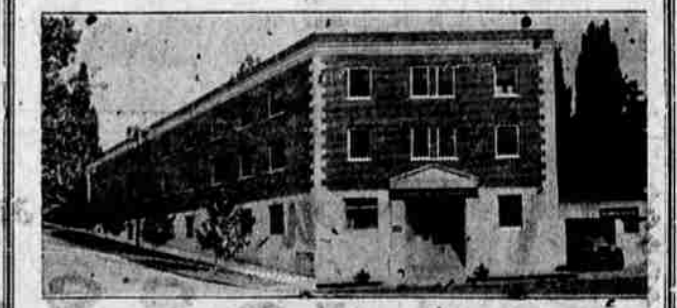
Pearl Mae Beasley was unable to attend school Thursday on account

of a bad cold. Harry and Roy Beardsley made a pleasant trip to Mt. Helborn Sunday. They returned by the Green Spring road.

Mrs. R. F. Beasley and son Roy called on Mrs. Beardsley Sunday evening.

Mr. and Mrs. Clyde Barks and children, Maxine and Billy, were in Merrill Wednesday.

Lois Bunnell was enrolled as a new student in school here Monday.



Sunny, pleasant rooms. Dependable nursing care. A good place to convalesce in illness and after surgical operations. Rates are reasonable. Ambulance for stretcher cases. Resident pharmacist. Prescriptions and medicine may be obtained at all times day or night.

All Physicians Cordially Welcome

### Klamath Valley Hospital

PINE AT FOURTH STREET  
KLAMATH FALLS, ORE.

Cor. 4th and Pine Telephone 497