

Chevrolet Shows Burst of Speed

The fleetness of a "human greyhound" recently failed to beat an automobile in a 100-yard dash from a start at the Los Angeles Coliseum.

A half-dozen four-cylinder cars of different makes had been given acceleration tests in 100 yard dashes. The best time was made by a Chevrolet. Each car ran eight sprints over the distance and the results were averaged. The average time made by the Chevrolet was 19.73 seconds.

The other averages were 11.13 seconds; 11.19 seconds; 11.28 seconds; 11.38 seconds and 12.54 seconds. The cars which ran second and third were considerably higher priced than the Chevrolet.

After the tests, the question arose as to the relative "pick-up" of the automobile and the human sprinter. A contest was arranged in the Coliseum between a Chevrolet and Keith Lloyd. Keith Lloyd is the champion sprinter of the University of Southern California. The Chevrolet was driven by Dick Champion, former Haskell University track star. The stop watch was held by Dean Cromwell, Lloyd's coach.

At the starting gun Lloyd leaped ahead of the car. He was in full stride before Champion had changed to second gear. The rapidly accelerating car roared after him, however, and caught him at the tape. Coach Cromwell clocked car and sprinter in a dead heat of 19.73 seconds. On comparative figures, had Lloyd sprinted against any of the other five cars he would have won without extending himself. The speed of the Chevrolet car at the finish was 32 miles per hour.

BUILDING UNITY FOR EUROPEANS

Foreign Minister Tells of Satisfactory Settlement of Problems

LOCARNO, Switzerland, Oct. 13. (AP)—"It is the unity of Europe which we are building at Locarno," said one of Europe's foreign ministers to The Association Press today in commenting on the progress of the security conference.

"You can take it for granted," he continued, "that the question of Germany entering the league of nations is already settled, and as for the nature of the French guarantees for the integrity of Poland and Czechoslovakia, you can say there will be no difficulty as all sides are determined to reach an accord."

"The formula for the latter problem is yet to be found but it will take the form of mutual guarantees operating under the league of nations covenant whose pertinent articles we will cite instead of brutally talking of direct guarantees."

The correspondent learns from other sources that the Rhine security pact contains no stipulation as to the length of its duration and that there is no present intention to seek revision of the penalty clauses of the league covenant as the result of the agreement with Germany. The allied statesmen feel it about impossible to secure the necessary league council for such a move.

If, therefore Germany officially approved the league of nations arrangement, it is evident that she must risk her chance of convincing the council after she has become a member that she is important to contribute economic, financial or military help in any league move against a proclaimed aggressor nation.

Chinie Season To Open Here Thursday Morn

Many Pheasants Reported in Klamath Basin and to East

Gloriously plumed China pheasants fat from a summer's feed on cut over grain fields, will be bombarded Thursday morning, the opening day of the China pheasant season in Klamath.

Opening on the morning of the 15th, the season will close at dusk on the evening of Saturday, October 21. It will last 17 days, which, it is predicted, will be long enough as far as the beautiful birds are concerned.

That the fields of the Klamath basin, between Klamath Falls and Merrill, are the common habitat of the game bird, is the report received here. Never before has there been such a quantity of pheasants in the county as this year. From the highways, motorists report that the brilliantly colored birds can be seen casually feeding in the fields, as if they were domestic chickens.

The limit for pheasants for one week is four. The game law stipulates that of the four pheasants, but two may be hens. It would also be within the law to kill four roosters and no hens, for the week's limit.

MRS. TAYLOR HERE

On a combined business and pleasure trip, Mrs. John Taylor of Merrill is spending the day in Klamath Falls from her home.

HERE TO VISIT FRIENDS

On one of their occasional trips up the valley to Klamath Falls, Mrs. F. J. Glenn and Mrs. Robert DeMoss, both residents of Merrill, arrived in Klamath Falls last and registered at the Hall hotel. Mrs. Glenn and Mrs. DeMoss spent the day shopping in Klamath Falls.

DOWN FROM FORT

L. E. Stanley, well known resident of the Fort Klamath country, was in town last night to spend today attending to business matters.

LEAVES FOR MEDFORD

Lloyd R. Delap, circuit court clerk, left for Medford yesterday morning to testify in one of the civil cases now being tried before federal court in Medford. Mr. DeLap will be away until the case has been completed.

HERE FROM BEATTY

Annie E. Taylor conducts one of these American institutions known as a general merchandise establishment, where a buyer may purchase anything from a side of bacon to a dress suit. She is the proprietress of said store in the town of Beatty, composed of a cluster of frame shacks and located in the south-eastern section of the Klamath Indian reservation. Mrs. Taylor was a visitor in Klamath Falls last night on one of her quite frequent visits to purchase supplies for her store and to visit with her many friends.

OAKLAND OUTPUT SHOWS INCREASE

PONTIAC, Mich., Oct. 12.—Announcement has just been made by A. R. Glancy, general manager of the Oakland Motor Car Company, that the October output of the Oakland factory is being increased more than 50 per cent over the preceding month.

"This increase is doubly significant," said Mr. Glancy, "because our September production was the highest of any month this year, exceeding the best previous month by 33-1-3 per cent. However, in spite of our volume of production in September, orders have continued to flood our home office since the announcement of our new cars and the accompanying price reductions, making it necessary to provide a still greater increase in October. Before the end of the present month our daily average production will have exceeded 350 cars and we have

BOYD PARKER HERE

Here in the interests of the Klamath Development company, Boyd Parker, former local manager of the Klamath Falls office, is in the city from his home in San Francisco.

GOING TO CHILOQUIN

Miss Phyllis Hogan and G. N. Clifton of the Golden Rule store will leave in the morning for Chiloquin to spend the day on business matters.

EARLE LINTMAN BACK

Earle Lintman returned this morning from Bend, taking Mr. Lintman as far as Medford on her way south to Sacramento to visit for several weeks with her people.

IN FROM MERRILL

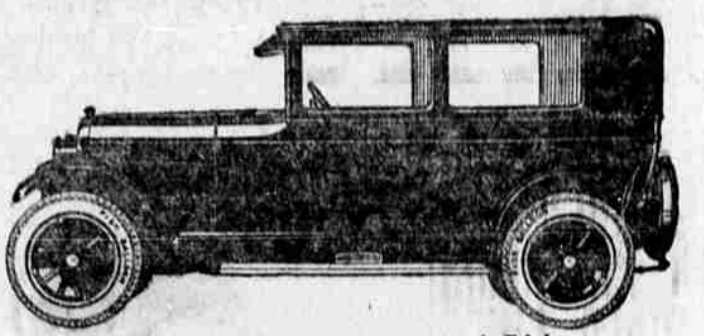
Mrs. R. H. Anderson motored in to the city this morning from her home at Merrill to spend the day here on business and pleasure.

When a man says "I run things at my house," he may mean the washing machine and the furnace.

The biggest event of the year and comes but once a year, Sugarman's 29th Annual Oct. Sale. Now. (Adv.)

"At \$895 the Overland-Six is head and shoulders above its price class"

... you buyers of six cylinder cars, think this over... it will save you money in the long run, and add a lot to the pleasure and comfort you can get out of motoring... never, in the history of the automobile, have such superlative values been offered as are being offered to-day by Willys-Overland.



Overland Six Standard Sedan, \$895 f. o. b. Toledo

... at a price familiar to you as that usually asked for four cylinder enclosed cars, and far below some four cylinder car prices—the Overland Six offers you a quality which is hard to duplicate at from \$400 to \$600 more... no further appeal to your judgment is necessary.

Amazing riding ease
... the low swung body is hung on extra long semi-elliptic springs made of Chrome-vanadium steel, the best spring steel made—the way this Overland Six rides over rough roads is a revelation to anyone.

A new type motor
... especially developed for this Overland, the six cylinder motor is far in advance—hung low in the chassis to give a straight line drive... perfectly balanced to give a smoothness of operation that is a revelation... flexible beyond any experience you have ever had with a light six, ready for any work you may ask it to do—and it delivers the biggest 40 H. P. that you have ever had under a hood.

Real beauty in this quality car
... 13½ feet from tip to tip, these are the dimensions of this REAL full-size Sedan... it's built for five real full grown people to ride in with comfort... lots of leg room, unusually deep seats beautifully upholstered in velour and designed for real riding ease. There is beauty in the room of this car... and there is a beauty in the body lines that will make you want it the minute you see it. It is long and low—racy and speedy looking... with such big window space that it gives you the vision of an open car. The doors are exceptionally wide and hung on hinges that keep it in place—rattle free and trouble proof.

Lubrication
... the force feed oiling system delivers the oil where it should go and when it should go in a quantity that lets you rest easy regarding lubrication... crank shaft is drilled and oil cooled.

We invite careful comparison
... go easy when you are buying a light six—see them all—try them all out—it's by direct comparison that we can best convince you of Overland superiority. But by all means try this Overland on a steep hill—on a rough street—in congested traffic—these are the places where real construction shows up—and when you ride in it just picture three or four hundred miles that you may want to travel some day—if Overland performance—Overland room—and Overland flexibility doesn't show you more than you ever expected to see—then our experiences have all been wrong.

Brakes
... the service brake gives a braking surface that insures perfect safety, big 12 inch brake drums on the rear wheels... the hand brake operates through a drum on the transmission... four times the braking power at the drum than you exert on the lever.

Quality equipment
... for equipment you get a magnetic speedometer, oil gauge, ammeter, windshield wiper, drum type headlights and all the features you really need. Auto-lite starting and lighting system.

Easy terms—low down payment—eighteen months for the balance and your present car as part of first down payment.

OVERLAND Standard Sedan SIX

Overland-Knight Sales Co.
4th and Klamath

NOTICE

Save money on Tire Mileage. The system we use is absolutely different from all other methods.

Let us show you a real repair job, done by this modern repair system. All work done on a strict Money Back Guarantee. Share with hundreds of satisfied customers this new deal in Vulcanized repairs.

Let us inspect your Tires FREE, before they need repairing.

Come in Today
ACE TIRE SHOP
115 South Eleventh
Phone 843J

Announcement
Dr. O. H. Mather
Specialist
Chiropractic and Physiotherapist

Has opened offices at
Maguire Building
715 Main St. Phone 404
Opposite Pine Tree Theater

DODGE BROTHERS USED CARS

We like to have customers look over our cost records. They not only prove our Used Car prices are right, but that the cars themselves are right—because they reveal the exact amount we spend in reconditioning.

WAKEFIELD MOTOR CO.
170 Main Street

DODGE BROTHERS DEALERS SELL GOOD USED CARS

BLY RANCHER HERE
Three years ago A. S. Conner, from Berkeley, Calif., bought a ranch—a good one, too—in the Sprague River valley country. It was formerly known as the J. Mitchell ranch, and recognized as one of the choicest pieces of land in eastern Klamath. Mr. Conner, who divides his time between his home in Berkeley and his home in Klamath, arrived in Klamath Falls last night to spend several days attending to business matters. He is registered at the Hall hotel.

HERE FROM BEATTY
Annie E. Taylor conducts one of these American institutions known as a general merchandise establishment, where a buyer may purchase anything from a side of bacon to a dress suit. She is the proprietress of said store in the town of Beatty, composed of a cluster of frame shacks and located in the south-eastern section of the Klamath Indian reservation. Mrs. Taylor was a visitor in Klamath Falls last night on one of her quite frequent visits to purchase supplies for her store and to visit with her many friends.

OAKLAND OUTPUT SHOWS INCREASE

PONTIAC, Mich., Oct. 12.—Announcement has just been made by A. R. Glancy, general manager of the Oakland Motor Car Company, that the October output of the Oakland factory is being increased more than 50 per cent over the preceding month.

"This increase is doubly significant," said Mr. Glancy, "because our September production was the highest of any month this year, exceeding the best previous month by 33-1-3 per cent. However, in spite of our volume of production in September, orders have continued to flood our home office since the announcement of our new cars and the accompanying price reductions, making it necessary to provide a still greater increase in October. Before the end of the present month our daily average production will have exceeded 350 cars and we have

already shaped our plant towards that end.

"Since the first week in October, the local unit of the Fisher Body Corporation has been devoted exclusively to the production of Oakland bodies. For some time Oakland production has been taxing the Fisher plant to capacity with its steadily increasing volume.

"Work of rearranging the Oakland plant to make possible this big increase has been under way for some time and we are confident that the middle of October will find everything adjusted and the new schedule in full operation.

"The combination of incorporating many refinements in the car and materially improving the motor by means of the new Harmonic Balancer, coupled with the reduction of 70 to 3350 in prices, has pushed business to a record level and we are anticipating a heavy demand for some time to come."

LORELLA
Mr. and Mrs. M. M. High of Carlton, Ore., visited in Langell valley the past week looking after their property interests.

Mrs. T. M. Bieler and children spent the week end at the Garber dam where Mr. Bieler is in charge.

Miss Bobbette Tuttle and sister Mrs. Nelson Smith spent several days visiting at Wolf Creek, Ore., last week.

Miss Alice Brown is attending high school in Klamath Falls.

G. P. Keller and H. J. Tichnor were subpoenaed as witnesses for the Oregon Trunk at the recent hearing held in Portland.

Mrs. Alfred Keller has returned to her home after spending the past summer in Portland receiving medical attention.

Ben Daniels, who has been manager of the dredger crew of the U. S. R. S. for the past two years, was called to Santa Rosa on account of the illness of his wife. Mr. Daniels does not expect to return to Lorella.

Owen Peppel who is teaching at Lorella school, has his house well under way and expects to have it completed in the near future.

Mr. and Mrs. John Turner were

called to Eugene on account of the sudden death of a friend, Mrs. Hall, who had been visiting with the Turners during the past summer.

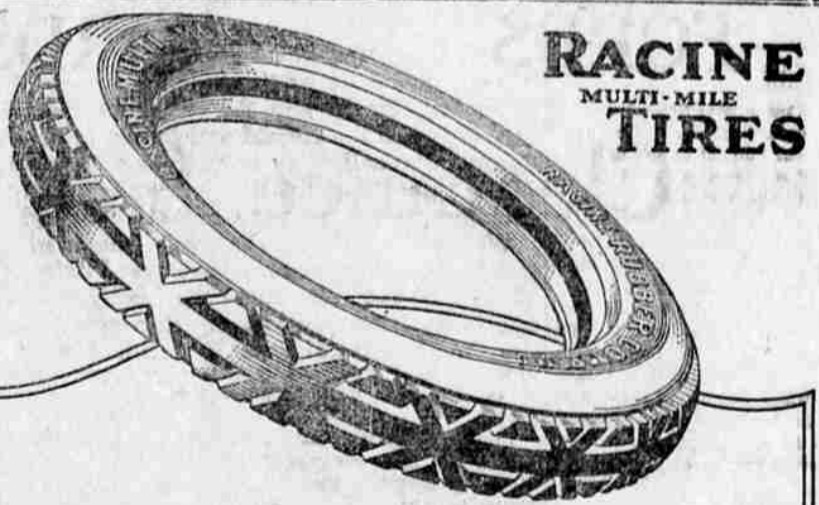
Mrs. H. J. Tichnor is spending a week visiting her daughter and family at Medford.

The new bungalow being built for the Langell valley irrigation district near Lorella post office, will be finished in about a month. Ralph Hopkins and family will occupy the bungalow, as Mr. Hopkins has been appointed manager of the district for a period of three years.

The Langell Valley Community club held the regular monthly meeting at Lorella school house on Saturday evening. Harvest being over,

a large crowd was present and a good attendance is anticipated during the coming winter months. Refreshments were served at the close of the meeting.

Mr. and Mrs. T. F. Boggs and son Lester visited in Klamath Falls last Saturday. Clinton Chorpeneing Jr. who had been visiting with his grandparents, returned to his home.



RACINE MULTI-MILE TIRES

Unprejudiced Advice

Perhaps you have not yet settled the balloon tire question to your satisfaction.

We are in a particularly good position to advise you without prejudice, and for this reason:

We sell both the standard size RACINE Multi-Mile Cord and the RACINE Balloon.

Both are low-pressure tires and both are of the finest RACINE quality.

Our advice will depend absolutely upon your particular need—and on that alone.

MOTOR INN GARAGE
230 Main Phone 294-J