

### Assured a long reign —the Packard Eight

AFTER twenty-five years of leadership in the manufacture of fine motor cars Packard has achieved the new series Packard Eight.

It is built to those unvarying Packard standards which mean long and satisfactory service. And in addition there are the new improvements which make such service doubly sure.

On the new series Packard Eight you will find the chassis lubricator and the oil rectifier—both guarding Packard Eight precision by almost automatically assuring regular and proper lubrication of both chassis and motor.

These are the most important improvements in motor car design since the electric self-starter.

We believe it will be long before Packard can surpass this car—in beauty and distinction, in comfort and performance.

*Packard Eight is offered in ten body types, four open and six enclosed. Many purchase their Packard Eights out of income rather than from capital.*

**Pospisil Motor Co.**

Klamath Ave. at 8th St.

# PACKARD

ASK THE MAN WHO OWNS ONE



## PINE TREE Theatre

It's the old Homestead of the Western plains

### "The Prairie Wife"

Is a story deep in the heart of America—of the settlement of the Western lands—with all the heartaches and struggles. A capable cast handles the picture in a big way.

**Wednesday**

On the screen

#### "Kiss Me Again"

With Monte Blue and Marie Prevost in the leading roles.

On the Stage

Five exceptional acts of highclass vaudeville. One of the biggest and best programs so far.

### Mainly About People

#### SOME FISHER Schaal Catches Salmon Weighing Over 30 Pounds

Charles Schaal proved himself a real fisherman yesterday when he returned from Yreka where he spent the holidays fishing in Klamath river, bringing back two salmon weighing over 30 pounds.

The fish are in the window of the A. J. Connolly's. Mr. Schaal caught them with a No. 5 grass spinner and an ordinary rod.

#### VISIT WITH SON Medford People Spend Holiday Here with Son

Mr. and Mrs. R. D. Henson and son of Medford spent the holidays here visiting with their son, Jimmy Henson of the Pine Tree theater. Mrs. J. T. Boardman of Medford spent the holidays here with Mr. and Mrs. Henson, all returning to their home in the valley yesterday afternoon.

#### BUSINESS TRIP

James R. Shea and Bert Leo, well known insurance men of Portland, spent the past three days in Klamath Falls in the interests of their firm, which is an insurance company for railroad men. Mr. Shea expects his company to appoint a permanent representative for this territory in the near future. The business men left here this afternoon for Ashland.

#### FROM ALGOMA CAMP

Louis Pappos and Jack McKay, two of the popular members of the Algoma Lumber camp, spent the holidays in Klamath Falls with friends. They returned to camp last evening.

#### CHARGES CRUELTY

Anita G. Lowry Wants Divorce from Elmer L. Lowry

Suit for divorce from Elmer G. Lowry was brought this morning by Anita G. Lowry, who charges cruel and inhuman treatment in that her husband failed to properly provide for her support. Mrs. Lowry asks that her husband be forced to give her \$20 a month alimony for the support of their two children. The couple are well known in the Sprague River valley section. They were married in Yreka in 1920.

#### RIGHT-OF-WAY BOUGHT

Oregon Trunk Railroad Acquires Another Piece of Property

Another transfer of right-of-way property to the Northern lines became known this morning with the filing of a deed from J. H. Hecker to the Oregon Trunk railroad. The piece of property involved 1.59 acres was sold for \$2500 and was purchased for the purpose of completing the North line right of way up the west side of Ewauna lake to the Link river bridge.

#### WHITNEYS HERE

Mr. and Mrs. W. Whitney, of San Francisco, arrived in the city last evening, from Medford, and will spend the greater part of this week here on business. Mr. Whitney is a son of the owner of the Leslie Salt company in the southern city.

#### VISITING BROTHER

Frank E. Ball, of Jamestown, N. Y., arrived in the city Saturday, night for a visit with his brother, W. C. Ball, 124 Jefferson street. He was accompanied by his son, Louis. They expected to make an extended visit in this section.

#### AU REVOIR PARTY

Mrs. Martin Green complimented Miss Coell McMahon on Friday evening with a farewell party at her home. The immediate friends of Miss McMahon were in attendance. Miss McMahon left Saturday evening for the east on an extended trip.

### Last Performance of Show Success

By all odds the most successful of the two performances was the last showing of the Pirates of Penzance given Saturday night at the fair grounds field before a crowd of between 600 and 700 people. With a faculty that bespoke of excellent directing, the show proceeded from episode without a hitch. Appreciation of the audience was noted in demand for encores evidenced by applause.

Mrs. B. Sharpless is the owner of two lots in Railroad addition as the result of a property transfer completed Saturday. For a consideration of \$2500, Mrs. Sharpless bought the two lots from G. L. Bowman.

You naturally would expect a rising generation to get out of bounds.

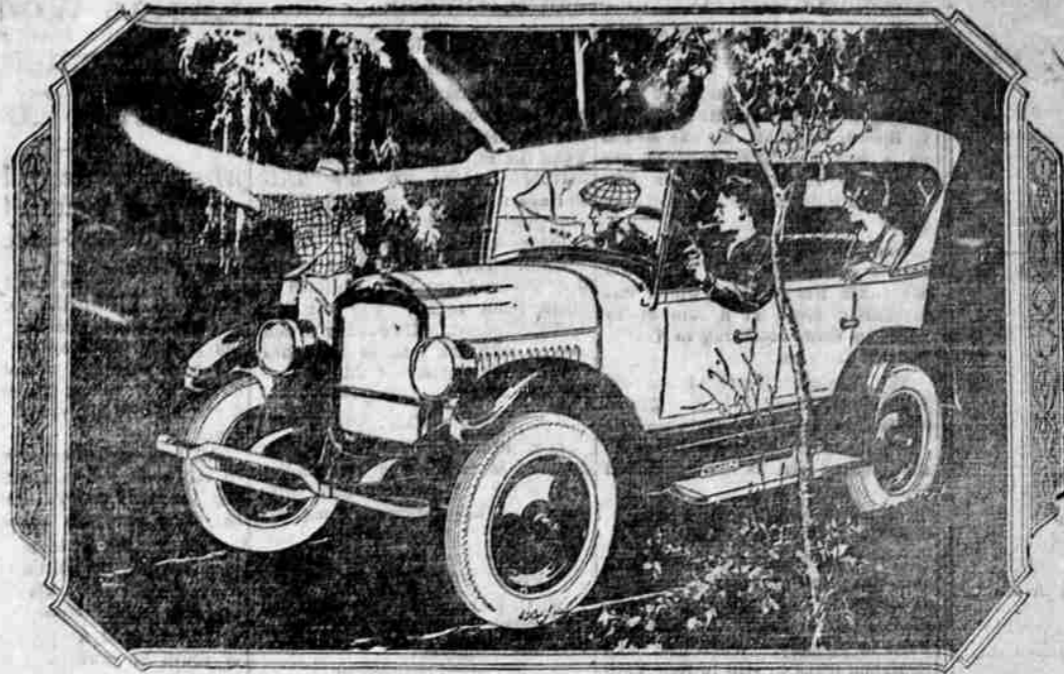
## At The LIBERTY

A 1925 Queen of Sheba in a dazzling dramatic fantasy is Betty Blythe in

### "The Folly of Vanity"

An up to date story with a remarkable cast including John Sainpolis, Billie Dove, Jack Hulhall and Betty Blythe in the leading role.

"The Lost World" is coming soon.



## There Must Be A Reason

### For Star's Sensational Sales!

BIG, exclusive values—values not to be obtained in any other low-cost car! There is the one simple reason for amazing, sensational Star sales!

### THIS STAR Can Be Yours by a new plan!

Star offers a revolutionary sales plan to enable you to own a Star with practically no expense to you. This big, generous, bonafide offer is an immediate, whirlwind success wherever announced. It is attracting thousands of participants—earning whole-hearted response from 100% ambitious people. Investigate the details of the new

Star Gold Certificate Save and Earn Plan

More, more Stars are going to new hundreds of experienced buyers. Like wildfire, Star popularity sweeps upward to new high levels.

All over the Pacific Coast careful purchasers are recognizing the unqualified superiority of Star among low-cost cars.

No low-cost motor can duplicate the Million Dollar

Motor's record-smashing power achievements. In the field of power and safety Star is unmatched with its revolutionary power plant and its Four-Wheel Brakes, for safety.

You will come to Star—you are next, as a careful, investigating buyer! Make your tests—full tests and comparisons—Come in today!

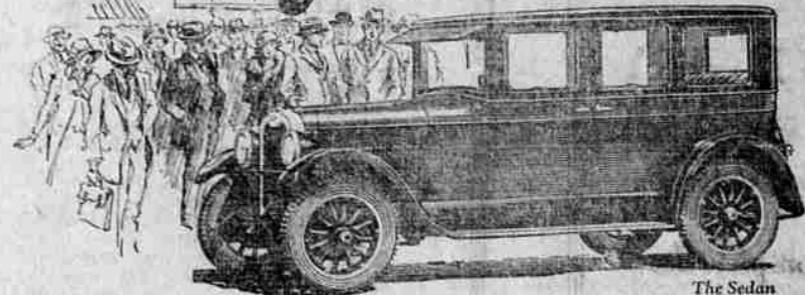
### BUICK & STAR GARAGE

Opposite White Pelican Hotel



"TOMORROW'S CAR TODAY"

## Everywhere -



The Sedan

## Enthusiastic Preference

Whole-hearted approval has greeted the New Oakland Sixes from the start. Good words have travelled from lip to lip—now the demand for the cars is spreading like wild-fire. And with good reason:

The New Oakland Sixes are beautiful beyond comparison. They reveal unequalled performance qualities. They incorporate more than 100 improvements including Air Cleaner, Oil

Filter, Four-Wheel Brake refinements and, above all, the Harmonic Balancer, an exclusive feature which renders the Oakland engine unmatched in freedom from vibration—yet prices are \$70 to \$350 lower. Is it any wonder that buyers are enthusiastic? Is it any wonder that they are forgetting Fours and other Sixes? Is it any wonder that they are placing orders for this car in a volume which is taxing Oakland's capacity to supply?

|                        |        |                       |        |
|------------------------|--------|-----------------------|--------|
| Touring Car . . . . .  | \$1025 | (Old Price . . . . .) | \$1095 |
| Coach . . . . .        | 1095   | (Old Price . . . . .) | 1215   |
| Landau Coupe . . . . . | 1125   | (Old Price . . . . .) | 1295   |
| Sedan . . . . .        | 1195   | (Old Price . . . . .) | 1545   |
| Landau Sedan . . . . . | 1295   | (Old Price . . . . .) | 1645   |

All prices at factory. General Motors Time Payment Plan. Herebefore the lowest (with delivery) have been made still lower. We can now save you as much as \$40 to \$60 in your time payment costs.

### R. R. R. GARAGE

861 Klamath Ave.

WINNING AND GOOD WILL

## OAKLAND SIX

PRODUCT OF GENERAL MOTORS