

MORE THAN 800 FIRES THIS YEAR IN U. S. FORESTS

Lumbering Industry Blamed for Most Serious of the Conflagrations

CAMPERS AT FAULT

Total of 104 Fires Blamed on Hunters, Picknickers and so on

Eight hundred and fifty-four forest fires have been fought by the U. S. Forest Service in the National Forest regions of Oregon and Washington up to July 31 this year. Of these five hundred and ninety-three were held under one quarter of an acre, 209 were held under ten acres, and 52 were large forest fires of ten acres or over. Lightning was responsible for 500 of the fires, while 234 were man-caused. These figures have just been issued by the District Forester, Portland Oregon.

The report covers only fires handled by the Forest Service in or adjacent to the National Forests.

Of the man-caused fires, 104, or approximately 40 per cent, were due to campers. Smokers came next, charged with 69 fires, or about 27 per cent. Lumbering is third having caused 24 fires. Lumbering fires, however, stand first in point of damage and area burned over, according to the Forest Service information. Two of the worst fires in the National Forests of the District this year are fires occurring in lumbering operations. The Wind River fire on the Columbia National Forest, with a burned area of approximately 4,000 acres, started on the Wind River side area, a going operation. While the cause of this fire was not definitely established, it started on an area closed to the public, and open only to the lumber-sale operators and their employees, it is said.

LUMBER CARGO DEMANDS BRISK

PORTLAND, Aug. 12.—The sharp demand for lumber space with the present strong tendency in rates to Atlantic coast ports is making general cargo tonnage continually tighter, according to dispatches from San Francisco. It is regarded as probable that general cargo shippers will find themselves struggling for space as the season advances.

The present basic lumber rate of \$14 a thousand is in force until December 31. Spot space has been closed at higher rates, from \$14.50 to \$15 a thousand feet.

An increase in general cargo rates to Atlantic seaboard points is considered probable. With a higher future for canned goods and various Pacific coast products moving through the canal to Atlantic ports, it follows that operators would find that type of cargo more desirable.

The peak in the general cargo movement will not be reached for several weeks. All available lumber space is booked three months in advance with no sign of decrease in demand.

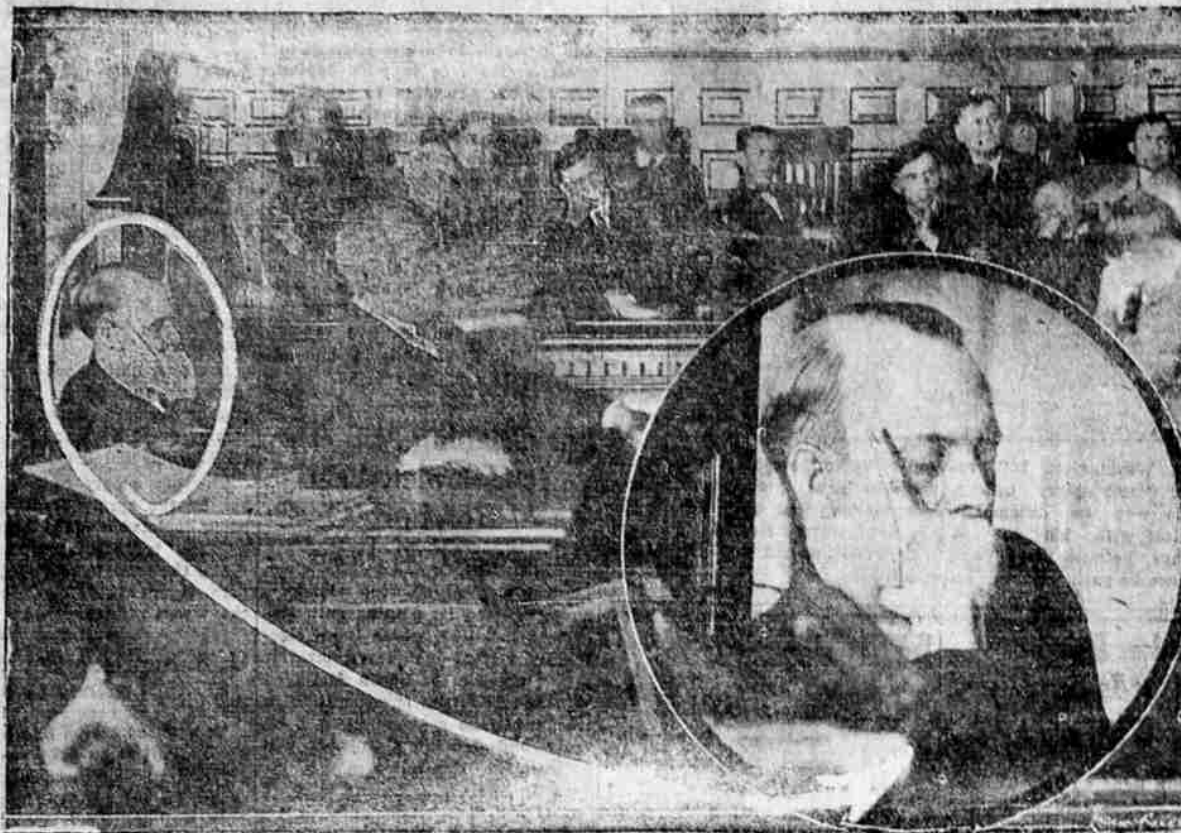
NORTON LOGGING BEGINS IN FALL

COQUILLE, Ore., Aug. 12.—J. E. Norton, who recently purchased the logging equipment of J. L. Aasen which was located on the timber secured previously at the government timber sale, will not start logging operations upon his place until the market opens up, or about in the fall he stated yesterday. A crew of men was sent out there yesterday to get the equipment in condition and prepared to set idle for about 60 days.

Mr. Norton purchased forty acres on the Aasen-Norway railroad about two miles from Norway, and if his plans materialize, he will later purchase the adjoining 40 acres. There is about two million feet of fir on his 40 and about the same on the adjoining tract.

The equipment was purchased from H. L. Kelley, receiver for the John L. Aasen logging operations for \$6800. Some of the equipment will be sold by Mr. Norton, as he does not plan to use the entire outfit.

First Photo of Scott Sanity Hearing



This picture was taken in the Chicago courtroom when hearings to determine the sanity of Russell Scott, condemned slayer, got underway. Scott is shown at the trial table, behind Dr. Whitney Hall, famous alienist retained by the defense. The jury is in the background. Inset shows a closeup of Scott.

Soon To Run Box Factory At Braymill

Wiring Contract Let; Foreman Now Engaged

Mr. A. E. Blocklinger, president of the Chiloquin Lumber company and Mr. Roland Rodolph, accountant of San Francisco, California, called at the office on Monday.

The contract for wiring the Box factory and dwellings has been given to Messrs. Hill and Brennan, electricians, of Klamath Falls.

Mr. Axel Eckwald has been engaged as foreman of the Box factory. He recently arrived from Sacramento, having had charge of the Sacramento Box and Lumber company factory there.

The Rees Blow Pipe company of San Francisco, has been given the contract for the installation of the blower pipe in the Box factory. Two men are now on the job.

Mr. Wm. Bray, president of the company made a flying trip to Klamath Falls on Tuesday.

Messrs. Bill Most and Roy Beckley, accompanied by the Misses Fay Connell and Fay Tucker motored to Agency Lake on Wednesday evening and enjoyed a "Moonlight swim."

Miss T. A. Brown and the Messdames, Selgman, Richardson, Good, Safford, Haunon and Crane motored to Agency Lake Wednesday afternoon and spent the afternoon swimming. They all reported a wonderful time.

The cookhouse crew are all wearing smiles since Wednesday morning. Mr. Jack O'Rourke has charge of the cookhouse. He throws a mean biscuit at meal time but at the present time he is not able to eat his own.

The last we saw of "Paddy" the cook he was rambling down the road singing "glorious."

Miss Tina Brown had as her guests on Friday, Dr. and Mrs. Bar-sacks of Monmouth.

The huckleberry patch was a popular place over the week-end for a number of Braymill inhabitants. H. R. Crane and family drove up Saturday evening returning Sunday evening; also Jack Han-an and family.

Mr. Wm. M. Bray, Miss Tina Brown, Mr. and Mrs. R. W. Jamieson, Bill Most, and Fay Connell enjoyed a broiled steak and roasted corn on the cob on the banks of Sprague River Friday evening.

Mill Destroyed; Loss Is \$250,000

BRAHAM, La.—The plant of the Weber-King lumber company, Inc., was destroyed by fire Saturday night July 25. The loss was approximately at between \$250,000 and \$300,000, partially covered by insurance.

All's fair in love and war. Women used enough rouge last year to paint our navy.

And the women are painting their knees. It is sensible. Mosquitoes will get painter's cramps.

The Dalles to Get Mill this Summer; U. S. Sells Timber

THE DALLES, Ore., Aug. 12. (AP)

Following negotiations between John G. Hehrich, president of the Wasco Pine Box and Lumber company, and forestry officials in Portland the last week, erection of a mill with 150,000 feet daily capacity in The Dalles, is assured. All conditions pertaining to the agreement have been met and the terms of the contract regarding the sale of the first unit of 252,000,000 feet of lumber in the Mt. Hood National forest have been agreed upon.

LUMBERING INDUSTRY STABILIZED

Lumberman of Present Day Said to Be Benefactor

"Lumber was once a nomad industry," observes Wilson Compton in the Nation's Business. "Now it has become one of permanent habitation, builder of new industries."

"We are witnessing a revolution in forest management and also in the utilization of tree products. Everywhere lumbermen are examining the economic basis of reforestation. The lumberman, instead of being a reckless destroyer of a national resource, plants forests and spends millions in protection of the timber now growing to useful size. The new forest age has come tardily but not anywhere near irretrievably too late."

Night Shift on in Coos Veneer Plant

MARSHFIELD, Ore.—The night shift was resumed at the Coos Veneer and Box company last week, 50 more employees being added to the payroll.

This month witnessed the closing of one of the pioneer large sawmills in the Willamette Valley, when the Silverton Lumber Co., of Silverton, Ore., announced its intention to retire from business. This sawmill, which has been in operation for about 29 years, was founded by R. A. Cowden and associates, and has a capacity of 125,000 feet daily. The plant is a single band mill with modern facilities throughout. For several years the Silverton Lumber Co., has been bringing its logs from the vicinity of Stayton, about 49 miles south of Silverton. Eleven miles of railroad have been completed into the timber and a two-sided camp has been operated under the direction of N. R. Cowden. Ample timber remains for several years' operations. In announcing his intention to retire from the lumber business, Mr. Cowden stated that the mill and timber will probably be offered for sale as a unit.

A red nose is no longer a sign of drink. He may have a girl who uses too much rouge.

U. S. To Lose Jap Fir Trade Writer Thinks

Siberia's Forests Seen as Menace

That the forests of Siberia offer a startling menace to the fir trade of the west with Japan and that there are now 1630 billion feet of merchantable timber on which the Japanese have their eyes is the statement of J. D. Horning in this month's issue of the U. S. Bulletin.

Mr. Horning discounts statements that this timber is inaccessible and that there is small chance of Japan using it as a source of supply. He points out that there are now about 200 mills operating in the region of Vladivostok and that the production of mills operating in this section has increased more than 300 per cent in less than six years.

The only American wood not to be found in Siberia and therefore not available for Japanese use is the cedar, Mr. Horning points out.

His conclusion is that Russia needs the money and that Japan needs the timber and when the two get organized the fir business of the west is sure to suffer.

California Mills Showing Activity

DIAMOND SPRINGS, Calif., Aug. 12.—Activity is apparent here. Full crews in the big electric mill and logging camps are striving for a record season's output.

Since the complete rehabilitation of the Diamond Calder railway the three logging trains are making record time hauling logs from the Calder logging camps to the mill pond here.

Owing to a steady increase in business the large electrically operated box factory of the California Door company is working overtime in all departments.

Heavy shipments are made daily to central points of sugar pine, fir, spruce and cedar.

Instructions To Camp Cooks

- 1.—If you run out of Whipped Cream for the Charlotte Russe, lather up a little Shaving Soap and put it on.
- 2.—Please don't hang your wet Socks to dry over the Soup Boiler. We can't serve Black Chicken Soup.
- 3.—Any cook caught putting a Clam in the Snowdrift, will be discharged on the spot.
- 4.—If you are short in Ketchup, boil the red flannel shirt that's laying under the sink. Add Salt and Pepper to taste.
- 5.—Be sure to save the T-bones. You can tack it on to a piece of Pot Roast and call it a Steak.
- 6.—It is a sin to throw away Garbage when there are so many Trusting Souls who like hash.
- 7.—Recipe for Hungarian Goulash: Pick up all the Leavings, slap some GRAY on it and serve with a smile.

Myerscough Gets Aid; Refuses to Use New Fattener

Joe Myerscough, Pelican Bay fireman and turkey raiser extraordinary, has enlisted the services of his buddy, Fred Cass, in catching grasshoppers for his herd of turkeys. Lack of rain has made the critters rather scarce. Dick Dale, conductor, arrived back from Medford with a preparation which he claimed would make the turkeys gain at least 2 pounds a week. He tried to get Joe to use it but met with refusal. Joe insisting that if it were any good Dale should use it himself, as he could use the extra weight.

Hoo Hoo Meet In Spokane To Be Humdinger

Elaborate Affair Planned in September

PORTLAND, Aug. 12.—Plans are being made for the entertainment of lumbermen from all parts of the country, who will attend the 34th annual convention of the Concatenated Order of Hoo-Hoo to be held in Spokane, Wash., September 14-17, 1925. Members of local Hoo-Hoo are determined to make every visitor get a lasting impression of his trip to the Pacific Northwest, the great lumber section of America. The efforts of the Spokane Hoo-Hoo are being backed by Hoo-Hoo throughout the Northwest, who are arranging an itinerary to include all the leading lumber centers in this part of the country. The dominant features of the 34th annual convention will be the conservation and reforestation problems. Many national authorities on these vital subjects will appear on the program, which will be announced shortly. Trips are being planned to the large sawmills, manufacturing plants, and out to the stands of virgin timber. In addition to this elaborate plans are being made for the entertainment of the guests, which will include trips to all the scenic points of interest around Spokane, and later on the coast. Every lumberman is cordially invited to this convention, whether a member of Hoo Hoo or not. Reduced rates will be in effect on all railroads.

Ewauna Baker Has Thumb Infection

"Pete", baker at the Ewauna camp, received treatment in town during the week for an infected thumb. According to his friends the treatment is believed to have checked further trouble.

Travelers: "A burglar got into my house at 3 o'clock this morning, when I was on my way home from the club."

Waters: "Did he get anything?"
"He certainly did! The poor beggar is in the hospital. My wife thought it was me."
—Answers (Lob- a smile.

Klamath County Sawmill, Planing Mill and Manufacturers' Directory

- Ackley Bros., Klamath Falls.
- Algoma Lumber company, Algoma.
- Anne Creek Lumber company, Fort Klamath.
- Big Lakes Box company, Klamath Falls.
- Bryant Mountain Lumber company, Malin.
- Christy Lumber company, Kirkford.
- Campbell-Towle Lumber company, Sprague.
- Chiloquin Lumber company, Chiloquin.
- Ewauna Box company, Klamath Falls.
- Illinois Lumber company, Langell Valley.
- Kitts Lumber company, Bonanza.
- Kruse Lumber company, Klamath Falls.
- Klamath Lumber and Box company, Shippington.
- Long Pine Lumber company, Bonanza.
- Lamm Lumber company, Modoc Point.
- McCullom Lumber company, Keno.
- Modoc Pine company, Chiloquin.
- Nine Lumber company, Klamath Falls.
- Pelican Bay Lumber company, Pelican City.
- Shaw-Bertram Lumber company, Klamath Falls.
- Shasta View Lumber and Box company, Klamath Falls.
- Sprague River Lumber company, Chiloquin.
- Topsy Lumber Co., Topsy, Ore. (P. O. Dorris, Cal.)
- Wheeler-Olmstead Lumber company, Klamath Falls.

- ### Planing Mills and Remanufacturing Plants
- Big Basin Lumber company, Klamath Falls.
 - Lakeside Lumber company, Klamath Falls.
 - Klamath Moulding company, Klamath Falls.
 - Swan Lake Moulding company, Klamath Falls.
 - Sixth Street Lumber company, Klamath Falls.
 - White Pine Moulding company, Klamath Falls.

Furniture

For every room in every home. At prices within the reach of everyone. There is more comfort per dollar spent, in furniture, than in anything else you buy.

Buy It Now

Used sewing machines at prices that are much less—prove this by comparison.

ROSE FURNITURE CO.

114 North Eighth Phone 828

Lumbermen!

You Can't Beat

KELLY-Springfields

At Any Price!

Note the construction—the secret of Kelly-Springfield super-performance

ALSO

From \$1 to \$2.50 reduction on each tire if you put it on your car yourself.

Hub Tire Shop

Chas. Johnson, Mgr.

502 So. 6th. Phone 616