

# DODGE BROTHERS SPECIAL TYPE-A SEDAN

Its beauty is particularly appealing because it distinguishes a vehicle of sturdy worth.

You are afforded the satisfaction of driving a car that actually lives up to its smart appearance.

Five Balloon Tires

\$1250 f. o. b. Detroit, \$1590 delivered

H. S. WAKEFIELD  
420 Klamath Ave.



## ACCOMPLICES OF CHEMIST SOUGHT BY AUTHORITIES

### Man and Woman Believed to Have Aided Schwartz in Making His Escape

#### GAVE HIM SHELTER

#### Records Reveal Him as Private in Red Cross Work Instead of Captain

OAKLAND, Aug. 11. (AP)

Search for a man and woman believed to have been confederates of Charles Henry Schwartz, at least to the extent of visiting him between the time he killed G. W. Barbe, ministerial wayfarer, and his suicide when arrest for his crime was imminent last Sunday was engaging attention of police today.

That the author of the "too perfect" plot to defraud insurance companies of more than \$100,000 by cashing in on the body of a man he had murdered, received food and medical attention for an injured ankle, after he had fled from the Cellulose plant laboratory which he had fired to incinerate his victim's corpse, is the statement of Inspector Wallman of the Oakland department. Wallman predicted that within the next 24 hours there will be startling developments in this case.

Instead of being a captain in the French army, Schwartz was a private in the Red Cross service, police state, and the silk skeins which he is said to have exhibited as progress made by him when selling stock in his company, were purchased at a department store for \$8.50.

It has developed that one policy carried by Schwartz in favor of Mrs. Schwartz for \$25,000 had a one year suicide clause which expired Aug. 2. If it proves that this policy is payable it probably will be the only one of half a dozen which totalled more than \$100,000 that will accrue to the wife of the man who committed murder and arson to beat the insurance game and, when he saw he had bungled, killed himself.

pany owns approximately 18,000 acres of pine timber in Klamath and Lake counties. It is composed principally in the three units, one in the Crescent district and the third in the Sprague River valley.

Mr. Day and Mrs. Lemieux will remain in the Klamath territory for several days inspecting their holdings here. Mr. Day has not been in Klamath for 12 years.

#### THE WEATHER

The Cyclo-Stormograph at Underwood's Pharmacy shows a slight decline in pressure this afternoon but no change in weather conditions is indicated.

Forecast for next 24 hours:  
Fair and warm.  
The Tycoos recording thermometer registered maximum and minimum temperatures today as follows:  
High.....82 Low.....52

U. S. Weather Report  
Weather: Oregon, generally fair and cooler tonight; Wednesday fair light westerly winds.



### PILES

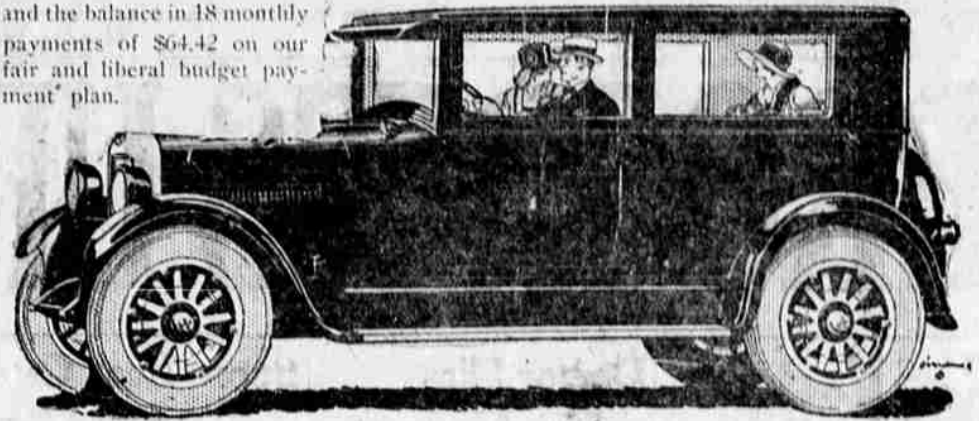
Suffered 18 years--Cured in 2 Months

"I had suffered for 18 years with PILES. My doctors said a surgical operation was absolutely necessary. Yet after a few treatments by Dr. Dean I was well, gaining weight and strength, free from all nervous troubles."

WHAT this woman writes is typical of hundreds of extreme cases of PILES which my celebrated non-surgical method has permanently CURED. Isn't it worth a few treatments by a recognized Specialist, who will GUARANTEE to CURE you or return your FREE rather than suffer longer? Read my FREE booklet on PILES and other RECTAL and COLON disorders. It will cause you to act promptly.

# \$487 Down in Klamath Falls

and the balance in 18 monthly payments of \$64.42 on our fair and liberal budget payment plan.



## Same Fine Studebaker Coach —but at a new low One-Price price

BECAUSE all Studebaker cars are manufactured on the one-price basis, we have been able to reduce the price of the Standard Six Coach without sacrificing any of the equipment or quality which made it a big seller at a higher price.

Scientific design, better materials, and finer workmanship distinguish it. And the following self-evident superiorities make it more up-to-date than the newest "yearly models":

Excess Power—According to the rating of the National Automobile Chamber of Commerce this is the most powerful car of its size and weight.

Abundant Room—Room to stretch your legs—room to enter or leave without disturbing occupant of folding seat.

Sturdy Body Construction—Fine northern ash and hard maple are used. We pay a premium to get the best quality steel.

Full-size Balloon Tires—for which the steering gear, fenders and even the body lines are specially designed.

Automatic Spark Control—eliminating the usual spark lever on steering wheel.

Safety Lighting Control—on the steering wheel.

Instruments—including 8-day clock, gasoline gauge, speedometer, oil-pressure gauge and ammeter, in single grouping under glass, on beautiful silver-faced dial.

Improved One-piece Windshield—automatic windshield cleaner, weather-proof visor, rear-view mirror, cowl lights and cowl ventilator.

Coincidental Lock—to ignition and steering wheel, which serves to reduce the theft insurance rate on Studebaker cars.

New-type Cowl Ventilator—foot operated.

There are only two cars manufactured on the one-price basis—the Studebaker in the fine-car field, and the Ford in the low-price field. Only in these two cases does one company in its own plants and with its own centralized organization make all bodies, all engines, all clutches, steering gears, differentials, springs, gear sets, gray iron castings, and drop forgings.

Studebaker has no "yearly models," but instead keeps its cars constantly up to date. Therefore this Standard Six Coach is ahead of the newest "yearly model," yet owners are protected from the artificial depreciation which has cost millions of dollars from the resale value of many makes during the past 30 days.

DUNHAM AUTO COMPANY  
Sixth and Oak Phone 52-W

THIS IS A STUDEBAKER YEAR.

### Day Bros. Not to Manufacture Here; O. T. Is Endorsed

Day Brothers Lumber Co. are not anticipating manufacturing their extensive timber holdings in this territory. They expect to eventually dispose of their timber acreage in Klamath and Lake counties but as yet have no sale in prospect.

This was the general statement

this morning of R. N. Day, vice president of the Day Brothers Lumber company, who with F. A. Lemieux, president of the company, arrived in Klamath Falls last night to confer with their local representative, Jack Kimball.

"We have not manufactured for 40 years, since my father and uncle were at the helm," Mr. Day explained. "We have no idea of entering the manufacturing field at this time."

When asked whether or not he

avored the entrance of a new railroad into the Klamath territory, Mr. Day smiled and replied:

"Why of course I do. Any new railroad into Klamath would be a benefit."

And well might Mr. Day make this statement for the survey of the Oregon Trunk railroad routes the proposed Bend to Odell extension between two large tracts of timber owned by his concern in the Crescent district.

The Day Brothers Lumber com-

## New OAKLANDS

# \$70 to \$350 Lower

In these five new motor cars, striking beauty is combined with performance such as you have never experienced. Acceleration, power, speed, four-wheel braking—all are a revelation. Too, a new thrill of unmatched freedom from vibration at all speeds is imparted by the Harmonic Balancer—an exclusive Oakland feature. Oakland has produced an even better Oakland Six—even further in advance of its field—then crowned this achievement by pricing its cars from \$70 to \$350 lower.

Touring \$1025 (Old Price \$1095)

Coach \$1095 (Old Price \$1215)

Landau Coupe \$1125 (Old Price \$1295)

Sedan \$1195 (Old Price \$1545)

Landau Sedan \$1295 (Old Price \$1645)

ALL PRICES F. O. B. PONTIAC  
General Motors Time Payment Rates, heretofore the lowest in the industry, have now been made still lower

WINNING AND HOLDING GOOD WILL

# OAKLAND SIX

R R R GARAGE  
831 Klamath Avenue

PRODUCT OF GENERAL MOTORS

# Make Way!

## for the Powerful Star

### The Million Dollar Motor Demands "Passing" Space

**Make way for the Powerful Star!** No matter the grade—no matter the road—clear up "passing" space for the oncoming Star Car. Pull to one side—let the Star Cars rush by to the top.

**Power—real power for the first time in a low-cost car—in the Star Car's Million Dollar Motor. Don't try to match this amazing power—it is new, a radical improvement in performance. Make Way!**

**To appreciate, you must ride behind the Million Dollar Motor.**

**For proof, tackle any "test" hill—take the wheel of the 1925 Star Car. Results will astound you.**

At the New Reduced Prices

## BUICK & STAR GARAGE

Opposite White Pelican Hotel