

Movies? She Runs a Garage



Beverly Haid went to Hollywood a few years ago from Texas to try to get in the movies. The best she could do was a job as a double, and when she got injured she gave it up. So now she's opened a garage, and says it beats the movie game all hollow. She's shown here with her three-year-old daughter.

Radio-Raised Baby



BOUND FOR UNCLE SAM'S MOST NORTHERLY POSSESSION, POINT BARROW. MR. AND MRS. GEORGE SYLVESTER AND BABY, GEORGE.

Seattle, July 27.—Baby Sylvester of Seattle is high-toning everybody aboard a steamer en route to Point Barrow, Uncle Sam's most northerly settlement in Alaska. He'll be the only white baby there when Mr. and Mrs. G. H. Sylvester, his parents, arrive in August.

The Sylvesters are going to Barrow more as an adventure than anything else. Sylvester will be principal of the government school at the point; Mrs. Sylvester will be an assistant teacher. They will be out of touch with the world eight months in the year—except by radio.

The baby will be brought up on a radio diet, gleaned what culture it may from broadcasts in many American cities. The Sylvesters are anxious to find out just how a baby "raised on radio" will turn out. There are several score natives and a handful of whites at Barrow.

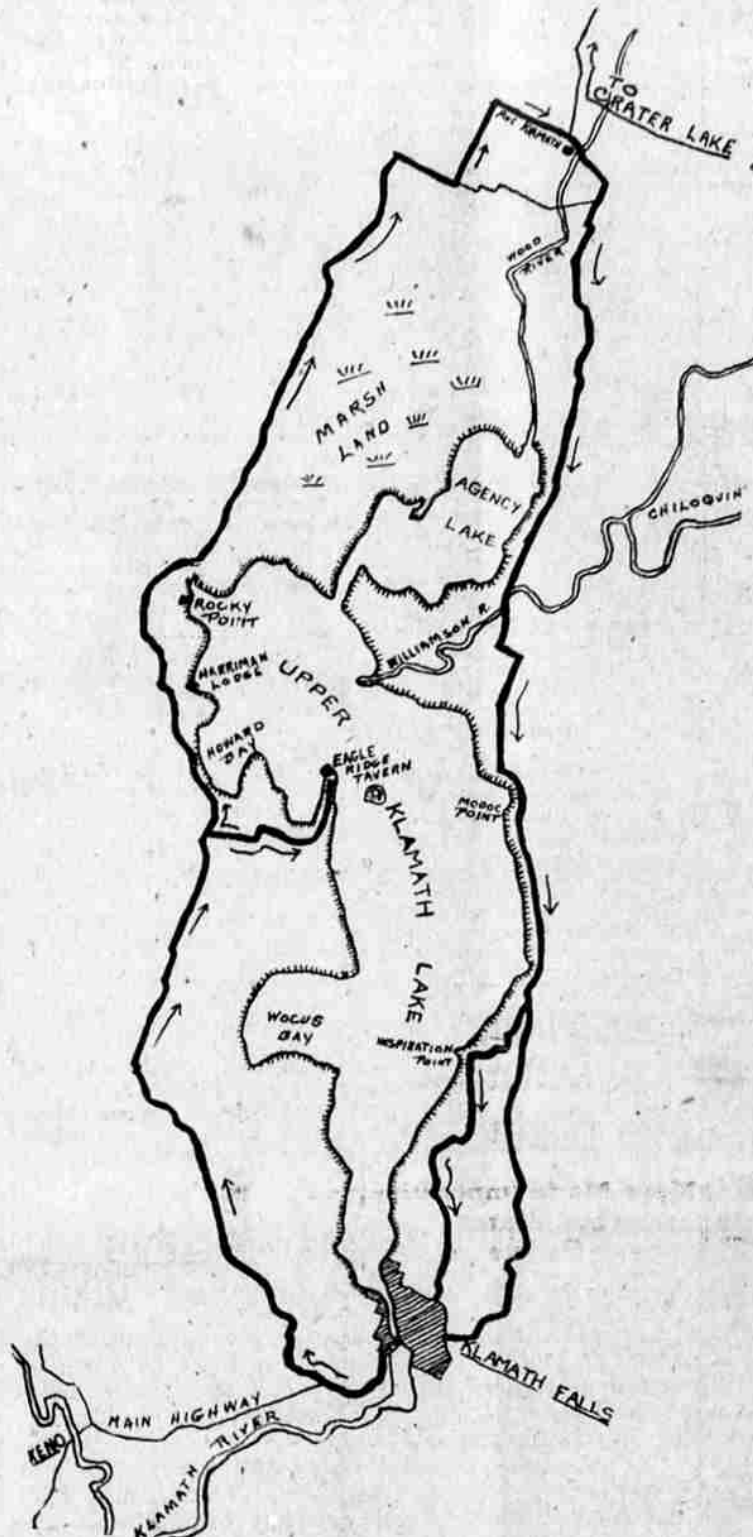
They Look Dayton Over



This lady and her simian friend gave Dayton, Tenn., a stiff jolt when they strolled down towards the courtroom where the evolution trial was in session. The monkey, taking plenty of long looks around, had the time of his life.

Klamath Lake Region Ideal Vacation Spot For Timber Men

Map of Crater Lake And Nearby Country



Although Upper Klamath lake right at the doors of most of the mill and wood workers of the Klamath district, is one of the most ideal camping and fishing spots in the west, many of them do not realize nor take advantage of the fact.

Due to the fact that most of the travel takes place down the east side of the lake, many men and women employed here in local camps do not realize that there is a vast difference in the east and west sides of the lake, and that they are overlooking one of the best camping spots in the entire west when they pass it by.

The map shows in some detail the road around the lake, the

illustrations show some lake scenes that do more than words to tell what may be expected.

The roads on the west side are rough in some places, but not so rough as the roads to most logging camps.

For those who desire to do the thing in style, there are ample accommodations at Rocky Point and at Eagle Ridge Tavern. Rocky Point has perhaps more to attract the average worker, tents, tent houses and groceries being available as needed.

The best fishing in the lake is now found between Eagle Ridge Tavern and Rocky Point.

For those who wish to isolate themselves, there are camping spots available in between.



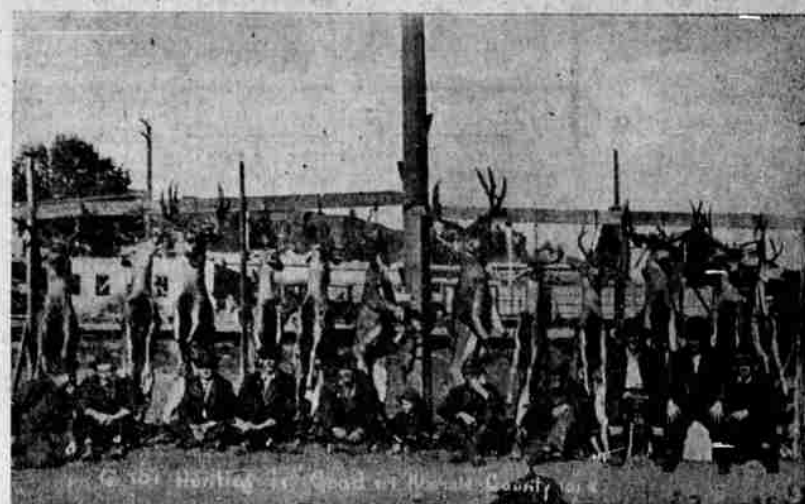
A CHARACTERISTIC LAKE VIEW



DUCKS FOR EVERYONE



FOR THOSE WITH STEADY NERVES



DEER IN ABUNDANCE



GOOD HUNTING



A COMMON SIGHT



ANOTHER BIG ONE