

Let Nature Be Your Guide

You will never know the true beauty of Nature if you keep always to the main travelled highways. Her real delights lie far from the beaten paths—in the fragrant woods; in quiet flower-decked valleys; by the side of joyous, sparkling streams.

Only dirt trails lead to these spots; trails hard to travel—save in a Ford. To the Ford they are all open.

Because a Ford Car, light yet powerful, comes easily through the hardest going.

Let your Ford take you away from the crowds this summer—into peaceful solitudes, where you can take your fill of beauty undisturbed. Venture without fear—it will carry you where you will; safely, easily and comfortably.



Runabout - - \$260 Coupe - - - \$520
Touring Car - - 290 Fordor Sedan - 660

On open cars demountable rims and starter are \$85 extra. Full-size balloon tires \$25 extra. All prices f.o.b. Detroit.

Tudor Sedan

\$580

F. O. B. Detroit

SEE ANY AUTHORIZED FORD DEALER OR MAIL THIS COUPON

Please tell me how I can secure a Ford Car on easy payments:

Name _____
Address _____
City _____ State _____

Mail this coupon to
Ford Motor Company
Detroit N. H.

Overland Adds Two-Door Sedan

Willys-Overland announces the addition of the standard sedan at \$655 f. o. b. Toledo, to its Overland four-cylinder line.

According to specifications submitted by the factory at Toledo this latest Overland car is a big, roomy, sturdy two-door sedan, beautifully upholstered in durable Bedford cloth and finished in a rich blue, with deep beading, its color scheme resembling that of the popular all-steel four-door sedan.

Production of the new type commenced in March and during the month of April 2200 of these cars were produced and shipped immediately to the dealer organization. Early sales reports indicate instantaneous approval of the new type by the motor buying public.

A number of unique sales features possessed by the new standard sedan were largely responsible for the immediate enthusiasm which greeted the new car. The unusually wide doors permit freer access to the front seat and to the entire interior, as well as the accommodation of larger articles.

Arrangement of the windows permits greater vision. Side windows are unusually long and with only one door post on each side the view is practically unobstructed.

The top is more rigid, there being no break in the top structure, except at the front doors, making more rigid construction possible. Elimination of two doors and door posts also greatly reduces the weight of the superstructure, which naturally is a factor in greater gasoline mileage.

Should Interest Campers

Hinged back of the front seats makes it possible to convert the seat cushions into an emergency bed by removing the front cushions, laying seat backs forward, placing rear cushion on the floor between front and rear seats and placing front cushion on rear seat. This is a feature that is bound to appeal to campers and vacationists.

The hinged driver's seat also gives him easy access to the entire interior, a feature that is bound to appeal to salesmen, mail carriers and others who use their car in their daily work. Although the back of the front seat is divided, the front seat cushion is in one piece.

"The new Overland standard sedan didn't just happen," is the statement from John N. Willys, president of Willys-Overland, appearing in conjunction with the announcement of the new type.

"It was designed and built by our engineering department at Toledo in collaboration with our sales department, to satisfy a definite demand on the part of the motor car buying public for an attractive, sturdy, convenient and practical enclosed car.

"From preliminary observations of the reception of the quantity which we have already shipped to dealers, we feel that we have met that particular requirement to a nicety. The price appeal, too, is a tremendous factor as the announcement of this car at its astonishingly low price, has placed it within the reach of a vast potential market."

Mr. and Mrs. Johnnie Janikowski, Mr. Frank Owen and Miss Thelma Holt of Shaw Bertram camp attended the Chilcoquin theater Sunday evening.

Mr. and Mrs. J. C. McCain visited Crater Lake Sunday.

Mrs. Drew of Klamath Falls is a guest of Mr. and Mrs. Frank Bell. Each year the beautiful lakes and streams of Klamath county are proving more attractive to residents as well as tourists to spend their week-end vacation. We are indeed a fortunate people with our snow-capped mountains covered with virgin fir and pine, our beautiful rivers, crystal clear, abundant springs, luxuriant and game, ducks, geese, pleasant and grouse, the home of the male deer and rainbow trout, fruit, wild plums and huckleberries. Truly nature has been kind to Klamath county and we are awakening more and more to the beauty of our own.

An English lumber buyer on a recent trip to Chilcoquin stated that he had visited every country in the world but for beautiful streams and scenic splendor Klamath county was superior to any other place.

EASTERN GIRLS

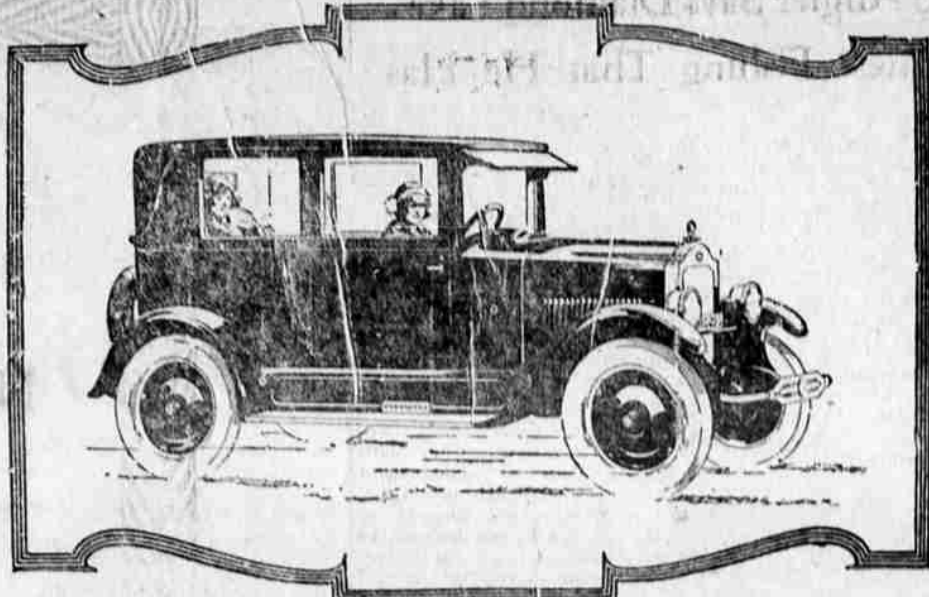
Sarah M. Wilson of State College, Pennsylvania, and Louise B. Moro of Cheshire, Connecticut, left this morning for Crater lake after spending Monday in Klamath Falls, enjoying the surrounding country. The young women are making an extended tour of the northwest.

CHILOQUIN

Mr. and Mrs. Al Farnsworth were Chilcoquin visitors Friday. They report an unusually large hay crop on Klamath Marsh this season.
Mr. and Mrs. Cyril Benson spent Thursday in Klamath Falls. They were accompanied by Mrs. Marie Buell.
Mr. and Mrs. Mann Varnum of Modoc camp are spending the week-end with friends and relatives in Chilcoquin.
R. Warner and C. C. Rankin of Paunina spent a few hours in Chilcoquin Sunday. Messrs. Warner and Rankin are employed in the estimating department of the Southern Pacific railroad.
Mrs. C. Hedrick, Mrs. Q. Buell and Mrs. Cyril Benson enjoyed a

picnic and swimming party at Port creek Sunday.
Riley Powers visited the Oregon Caves near Grants Pass Sunday.
W. Grob and family spent Sunday at the head of Williamson river.
Miss Wilma Grob of San Jose, California, is spending her vacation with her parents, Mr. and Mrs. W. Grob.
Cyril Benson, who has charge of the Chilcoquin theater, and Ted Snyder of Klamath Falls, spent Monday at Kowam Kam on a fishing trip.
Mrs. George Bell spent the week-end in Klamath Falls with her daughter, Mrs. Bonson.
G. W. Brown is sinking a well on his property on Main street. Construction on his store buildings will begin within the week.

Chilcoquin Lumber Co. will put on a night shift August 1. This company has recently completed an up-to-date box factory with all modern equipment installed.
Mr. and Mrs. E. Neipoth were shopping in Chilcoquin Saturday. Mr. Neipoth has charge of the woods for Chilcoquin Lumber Co.
Mrs. Rose Bratton and Mrs. Newcomb of Klamath Falls were Chilcoquin visitors Saturday.
George Fotopoulos of Sacramento has recently accepted a position as chef at the Quality Grill. This property is being improved by the addition of a new ice box and cooler.
Miss Mamie Clark, who taught in the Chilcoquin public school for two years, sailed last week for Seldonia, Alaska, where she has a



TODAY! Not Tomorrow

- Distinctive Features of the New Coach
- The Million Dollar Motor
- Four-Wheel Brakes
- Full Balloon Tires - 4.95
- Disc Clutch - Dome Light
- Spring-Type Silk Curtains
- One-Turn Window Lifts
- One-Piece Windshield
- Cowl Ventilator - Bumper
- Boyce Motometers
- Aluminum Kick Plates
- Genuine Gray Spanish Leather Upholstery
- Optionals

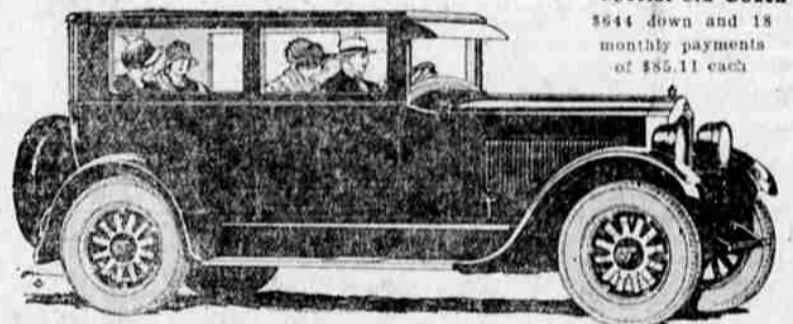
The 1925 Star Car is the greatest value buy in its price class—today—not tomorrow. The new Million Dollar Motor has swept the Coast with its real power performance. This is the car for you, the car with a hundred and one advanced features—today—features which competition may have tomorrow. High class features which set the Star in a class by itself. *It is the car for you.* It will save you money in every mile. Compare it with any car, detail for detail. Then you'll know—positively—why its the greatest value buy in the world today.



BUICK & STAR GARAGE

Opposite White Pelican Hotel

WITH THE MILLION DOLLAR MOTOR



STUDEBAKER Special Six Coach \$644 down and 18 monthly payments of \$85.11 each

Why the One-Profit* Coach Excels

—it is engineered and built complete by one organization—Studebaker. It is a perfectly co-ordinated, harmonious unit. This means better performance, greater comfort and increased mileage at an accepted coach price

AN AUTOMOBILE, like any other highly specialized machine, runs more smoothly—lasts longer—gives greater satisfaction—when its thousands of elements are carefully co-ordinated into one harmonious unit.

***By a "one-profit" car** we mean a motor car that, in its vital parts, is manufactured by one organization—thus cutting out the extra profits and overheads which arise when vital parts are bought from others. There are only two cars that can be thus classified, because—of all the makes of passenger cars built in the United States, only 2 make all their own motors, bodies, clutches, springs, axles, gear sets, differentials, steering gear, gray iron castings and drop forgings. One of these 2 is Studebaker and the other is Ford.

clock, automatic windshield cleaner, rear view mirror, door pockets, rear window curtains, ash receiver, trunk rack, ornamental pull-cord, cowl ventilator, stop light, dome light, tire carrier locked by the same key that locks door, and the splendid coincidental lock to ignition and steering wheel. Lights are operated from a switch on the steering wheel which is left free for this convenience by the elimination of the spark lever. In all Studebakers the spark is automatically controlled by the speed of the motor.

Obviously, a better car can be produced when all vital parts are designed, engineered and manufactured by one organization.

In its insistence upon comfort, this car is typically Studebaker. There is comfort in the extra heavy cushions—in the big springs—in the full balloon tires for which steering gear, fenders, etc., have been specially designed—in the ease with which passengers may enter or leave the rear of the car—in the extra large windows and windshield.

The Studebaker car is built on this "one-profit" principle. Not only all the engines, but also all the bodies, and all the axles, gear sets, differentials, springs, clutches, steering gears, gray iron castings and drop forgings are manufactured in Studebaker plants. This is not true of any other automobile in the fine car field.

The Studebaker, therefore, being built as a unit—functions as a unit—with all of the advantages of unit over assembled construction.

The Studebaker Special Six Coach is an outstanding example of the finer quality made possible by this "one-profit" principle of motor car manufacture.

This automobile is really a fine 5-passenger coupe, but is called a "coach" because it carries the lowest price at which an enclosed car has ever been sold on the famous Studebaker Special Six chassis.

In this Coach fine grades of upholstery are used. You'll find the same quality of workmanship and materials in all hidden places that you see out in the open.

Many of the superiorities of this Coach are invisible—and therefore all the more important. But here are some you can easily see and check against competing cars: gasoline gauge on the dash, 8-day

"Coach" in name—Coupe in quality

Buy now—no "yearly models"

You may buy this Coach today—or on any day of the year—with the assurance that there will be no "annual announcement" to make it artificially a "last year's model."

For Studebaker has discontinued the custom of presenting a new line of cars every year. Instead, Studebakers will be kept up to date all of the time.

DUNHAM AUTO COMPANY

Sixth and Oak

Phone 52-W

THIS IS A STUDEBAKER YEAR



Our Chief Ambition

You can buy tires here and there and everywhere.
When you buy tires of us, you are buying more than that.
You are buying our desire to serve you whenever you need tire information, tire advice, tire service.
We believe that in RACINE Tires we offer you the best possible tire value. We are equally ambitious to offer you the best possible dealer cooperation.

RACINE MULTI MILE TIRES

MOTOR INN GARAGE

230 Main

Phone 294-J