

# HEARS HILLS WHISPER OF GOD

DAYTON, Tenn.—“We humans haven't no call to comprehend the incomprehensible, or scrutinize the inscrutable.”

The little mountain cabin of “Old George” Morgan, mountain preacher, hugs the green breast of Waldon's Ridge, 2100 feet above the town of Dayton, where “the monkey war,” as the mountaineers call the evolution battle, rages.

### The “Worst Reader”

Generation after generation of Morgans have lived atop Waldon's Ridge and watched the valley folks far below.

They call George Morgan, “the worst reader in the country,” That means that he reads the most.

Mountaineers who sometimes see a newspaper and who keep the Holy Bible and a patent medicine almanac upon their bare tables, look at Morgan with awe.

“Old George Morgan's read this Darwin fellow,” they tell you, and would so defy his God, runs through their voice.

We found “Old George” Morgan hoeing his harlia plants and gazing at the blue-misty valley more than 2000 feet below him.

The monkey war down there? George Morgan's genial old face sobered.

“So much wrangling and jangling,” he said, “all because folks want to comprehend the incomprehensible and scrutinize the inscrutable.”

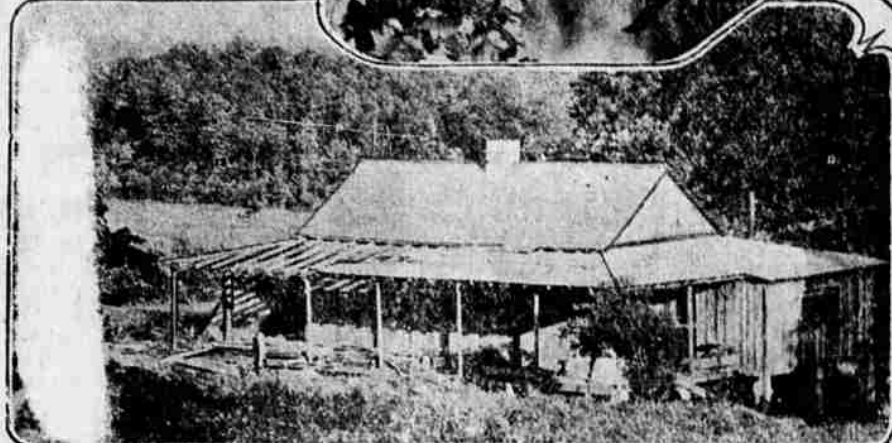
### The Mountains Know

“Look at my mountains,” and his lean brown fingers pointed to a distant peak creamy with chestnut bloom. “They know and they keep still. When folks know, they keep still, too.”

Morgan studied to be a minister long years ago in a little theological seminary down in Athens, Texas.

But he came back to the mountain of his fathers without his degree and sheepskin.

But degree or none, he went upon his work, tending his bees and cattle and fruit trees week-days, mounting his horse, Bible in saddle-bag, and preaching the word of God to soul-hungry mountaineers on the Sabbath.



Above is “Old George” Morgan, Mountain Preacher, who finds truth and comfort in the Tennessee Hills and desires no answers to his questions. Below is his little home, perched 2100 feet above the Town of Dayton.

“Folks can't begin to doubt one word in the Bible,” says the mountain preacher, “without beginning to doubt all of them. And then where'll they be?”

### Favors School Law

Any evolutionary teachings that deny the special creation of man are a menace to the state's young, declares Morgan, and he's for any law that will keep the schools safe for children.

Morgan cast a bright blue eye over skies no bluer. “At night I sit in front of the cabin and watch the stars,” he went on.

“They make me hungry to know things! Why we came and where we're going and if out folks are waiting for us over there.

“But that's sin, and I make myself stop bothering God and just sit still and watch 'em up there all crisp and cold like fire, and I know He knows, an' that's enough.

“I'm just a homespun plain man and he is God. Who am I to comprehend the incomprehensible?”

### Easy to Believe

“But God comes closer to us folks on the mountains than to those down in the valley. It's easier for us to believe.

“There were 10 of us kids running over these mountains, and our mammy and pappy didn't have much, but they taught us that cool mountain air and spring water and the green grass and the blue sky were enough, and not to be asking for other things.

“I learned to keep satisfied in life. I got another suit of clothes and enough money for buryin' and I got my Bible and my wife and I aim I'm the happiest man alive. I can live on \$100 a year up here.”

Black smoke rose like a wraith from the lowlands, and the toot of a factory whistle echoed faintly through the ridge.

“They slave so down there for things they don't need,” said the mountain preacher.

“I don't want to take nothin' away from life with me but happiness and my belief in my Book. I want those little children down there to have that, too.

## VANCOUVER LOGGING IS CURTAILED

Decrease of 167,762,448 Feet From First 5 Months 1924

VANCOUVER, B. C.—Curtailed operations in the camps is indicated by the decreased log production for the first five months of the present year. The cut amounted to 652,396,468 feet, a decrease of 167,762,448 feet from the amount cut in the same period of 1924. In May the cut was 195,733,812 feet, which was 33,687,466 feet less than for the same month a year ago. Although timber production is 25 per cent less than a year ago, there are far too many logs in the water above the demand. Some of the big companies are not operating and it is very probable that they will not resume until after the summer when the fire hazard is past. The warm weather of a month ago gave the loggers a scare, but now that rain has come in quantity and showers are frequent, operations which might have been reduced are still being maintained. The Comox Logging company, which is a subsidiary company of the Canadian Western Lumber company, and which operates on the east coast of Vancouver Island, is active. It has put a new camp on the further side of Oyster river and is preparing to invade the groves of cedar and fir on the highway toward Campbell river and Campbell lake. The provincial government is taking a decided stand in regard to the export of logs. With more timber being cut than the market can absorb, Hon. T. D. Pattullo has announced that there is no intention of relaxing the regulations governing export, and should the market become glutted, export will not be allowed to relieve congestion. He states that permits for the export of logs from licensed areas was only fifty per cent of that granted in the same period of last year. It had been stated that mills were being constructed on the other side of the line for the purpose of cutting logs from British Columbia, but Mr. Pattullo claims that the present situation proves that this is absurd.

## Standard Lumber Company Erects Fine Hospital

SAN FRANCISCO, Cal.—One of the finest hospitals in the state has just been opened by the Standard Lumber company at Standard City (Tuolumne county). There are 33 rooms, with accommodations for 24 patients at one time. The equipment includes a modern drug store, an X-ray apparatus, and excellent laboratories. The cost of the institution was \$85,000.

RETURNS FROM SOUTH  
J. R. Shaw of the Shaw-Bertram Lumber company, returned Saturday from San Francisco, where he spent several days on business.

TO WLUL-KSE  
Jimmer Johnston and Heinie Smallfield motored to Wlul-Kse Sunday from Pelican Bay camps in Ye Brogan.

## Love Tips for Lumberjacks, by Miss Jellicose Juniper Joynes

In conducting this column, I feel a great responsibility has been placed upon me in being appointed, as it were, counsellor-at-heart for the he-men of the open spaces, and I shall feel it my duty to give the best of the wisdom that is mine, which has been garnered from many years of experience on the tempestuous seas of passion.

Wherever possible, the letters of puzzled swains will be published, but of course many of them which will be confided to me will be of a nature too delicate and personal to print; in such cases, an answer will either be mailed to the man, or it will be given in these columns in such a manner as to keep the nature of the question concealed from the world at large.

Dear Miss Joynes:  
I have been going with a young lady for about a week, during which time I have had three dates with her. The last time we were out, she insisted on holding my hand. I did not think it was quite the thing to do, but she insisted, and as I love her very deeply, I permitted it. Did I do wrong?  
—John W. “Red” Johnston.  
Absolutely. Especially if the young lady has made no offer of matrimony, which I take it she has not. She will have more respect for you if you show more manly modesty. Never permit it again, and if she tries to get fresh again slap her a good one and tell her I said so to lay off.

## College Boys Will Battle White Pine Rust This Summer

100 Students From Western States to do Forestry Work During Their Vacation

SPOKANE.—Stephen N. Wyckoff, associated pathologist in charge of the white pine blister rust control work, has directed from the western office in Spokane, says that 100 young men out of school will be in the battle this summer, against the timber foe in the upper Priest Lake region in Northern Idaho. Forestry schools represented will be Montana, Idaho, Washington, Oregon, California, Gonzaga (Spokane) and Iowa.

Thirteen tons of provisions and equipment have been sent into the district. Nine additional tons of food stuffs will be dispatched this season. The storehouse is a boat on upper Priest Lake and the base camps will be seven and ten miles inland, with ten pack horses to carry the supplies.

## Eyre Shingle Co. To Build Mill At Arlington, Ore.

Plant to Have Capacity of 20M of Lumber; to Have Four Shingle Machines

A new concern has been organized at Arlington known as the Eyre Shingle company. The organizers are H. W. Seasons, a well known logger, J. A. Gray, Jack Healy and Newton Field. They are erecting a combination lumber and shingle mill. The sawmill will have a capacity of about twenty thousand feet per day and the shingle mill will be equipped with four upright machines. The company has a large stand of timber which will be cut and manufactured in the new plant.

FISHING TRIP  
Mr. and Mrs. C. R. Cladenburg, Mr. and Mrs. A. G. Pearson, Miss Beatrice Pearson, E. W. DuRoi and Earl Pearson of the Sixth Street Lumber company will enjoy a fishing trip to Diamond Lake over the Fourth of July.

## FOURTH TO BE BRIEF IN THE FIR DISTRICT

Inland Empire Mills to be Closed for About Three Days

PORTLAND, Ore.—The Loyal Legion of Loggers and Lumbermen announced here today that the fourth of July shutdown of fir saw mills on the west coast would be brief this year. The announcement said the average duration of the shutdown would be not more than five days. Some companies have announced they will remain closed for two or three weeks while necessary repairs are being made.

The holiday closing of the pine mills of the inland Empire will average not more than three days, it was said.

## British Columbia Ranger Is Burned To Death In Fire

Four Hundred Men Fighting Fire Near Deep Bay, on Vancouver Island

VANCOUVER, B. C.—Forest fires are raging in several districts on the lower mainland of British Columbia and on Vancouver Island, and the provincial forestry department had requested that logging operations be cut down to half time during the extremely dry weather.

At Port Neville, in Prince Rupert district, O. G. Clark, assistant forest ranger, was burned to death after warning people of a change in the fire's direction.

Four hundred men are fighting a blaze at Deep Bay, Vancouver Island where flames are sweeping 3,000 acres of Canadian Robert Dollar company's holdings. A brush fire near Capilano river, whence Vancouver derives its water supply is being fought. Other fires are reported at Prospect Lake, Vancouver Island, Union Bay, Vancouver Island and between Mission and Stake lake in the Frazier river vale.

ORS IMPROVES  
M. T. Ors, who has been in the Klamath Valley hospital with an infected leg for several days, is getting along very nicely, according to hospital authorities.

## NEW INCORPORATIONS

Sunset Timber Co., Albany; decrease of capital stock from \$150,000 to \$100,000.  
McCullough Creek Lumber Co., Inc., Glendale; capital stock, \$50,000; incorporators: Guy Smith, N. P. Jensen, M. W. Smith, Verl A. Smith.  
The Christian Mueller Land & Timber Co., Davenport, Iowa; filed notice of withdrawal from business in Oregon.  
National Forest Products Co., Portland; capital stock, \$5000; incorporators, M. A. Phillips, V. J. Phillips, F. McKay.  
Lake Ewauna Boom company, Klamath Falls; capital stock, \$25,000; incorporators, D. V. Kuykendall, M. S. Wherland, Robert B. Kuykendall.  
B. L. Burroughs, Inc., Pendleton; change of name to Pendleton Lumber and Coal Co.  
Deachutes Lumber Co., Minneapolis, Minn.; filed notice of withdrawal from business in Oregon.  
Fischer-Soule Lumber Co., Eugene; has been dissolved.  
W. L. Comyn & Co., Inc., San Francisco; granted license to transact business in Oregon. The company is capitalized at \$1,250,000.  
Big Creek Logging Co., Portland, dissolved.  
Union Avenue Lumber & Supply Co., Portland; capital stock, \$5000, incorporators, F. J. Moser, H. P. Owen, Jesse G. Warrington.

Rogue River Valley Lumber Co., Portland, capital stock, \$500,000; incorporators, Geo. L. Jennings, W. H. Dopp, L. A. Felke.  
Battle Creek Lumber Co., Crow, capital stock, \$1200; incorporators, Perry A. Main, Mae Main, Ula Carpenter, Geo. W. Carpenter.  
Chantauqua Lumber Co., of Warren, Pa., filed notice of withdrawal from business in Oregon.  
Milton Creek Logging Co., Portland, dissolved.

## TO LAKE OF THE WOODS

Mr. and Mrs. H. W. Bridgeford will spend the week-end at their summer camp at Lake of the Woods.

### GOOD USED CARS

Buick "4" Touring, 1922	\$325.00
1922 Ford Touring	\$115.00
1923 7-Passenger Buick	\$750.00
1924 Star Touring	\$415.00
1922 Overland	\$275.00

Lots of other bargains  
Compare these Prices

### Buick & Star Garage

Opposite White Pelican Hotel

### FINE Lathe Work and Machine Work

Sawmill and box factory men are fast learning our work satisfies. For speed and accuracy, bring your rush jobs to us!

### Acme Motor Co.

400 Sixth Phone 680

### Electric WELDING

### FINE Lathe Work and Machine Work

Sawmill and box factory men are fast learning our work satisfies. For speed and accuracy, bring your rush jobs to us!

### Acme Motor Co.

400 Sixth Phone 680

### Electric WELDING