

BUILDERS PAGE

Wrestlers in Fine Shape for Championship Match in Moose Hall Tonight; Plan Two Bouts

Henry Burke and "Farmer" Vance, middleweight wrestlers, both declared themselves to be down to weight at 10:00 o'clock this morning and in readiness for their championship match tonight at 8:30 in Moose Hall.

Both men are in the best of condition and so evenly matched, both in experience and weight, that anyone's guess as to the winner is good.

The match is for the middleweight championship belt of the Pacific coast, now in possession of Burke by virtue of his victory here last winter over Basanta Singh, San Francisco Hindu who held the belt for three years previous to his unfortunate meeting with Burke.

The match will be held under Police Gazette rules, with nothing barred but the stranglehold.

This is Burke's first opportunity in nearly a year to show local fans what he can do in competition with a man his own size and weight. All during the season he has been forced to give away 10 to 20 pounds in

is much more of a handicap in a wrestling match than in a boxing match, where speed rather than strength is a prime requisite.

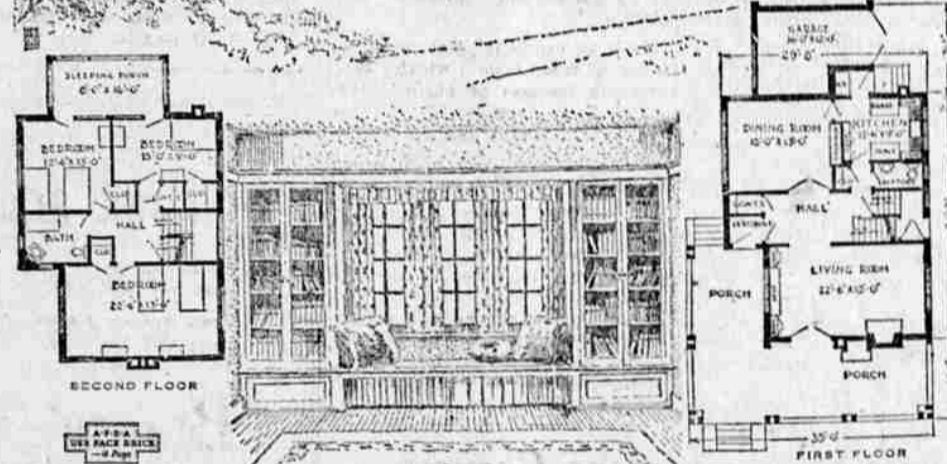
The semi-final match is between Pete Buzukos, former welterweight champion of the U. S. and Jim Fleming, 160-pounder.

Both matches will be to a finish, best two out of 3 falls, with no time limit set.

Indicative of the interest taken in the matches is the fact that many reservations from outside the city have already been secured by ardent wrestling fans.

In addition to the wrestling card, two good boxing preliminaries have been arranged, Young Duffy vs. Battling Morris and Hogan vs. DeLaney.

A "Western" House for Comfortable Living the Year 'Round



House No. 619

Designed for American Face Brick Association

HECK over this house and you will find all the modern conveniences of an up-to-date home, and yet all included in such a way as to make the house an exceptionally economical one to build. Note especially the ingenious way in which the garage and sleeping porch have been made a part of the house.

The porch on this house is the principal external feature. It is so large and so placed that some portion of it will be shady at any hour of the day. Although it extends along two sides of the living room, it does not darken that room, which has a fine group of windows at the uncovered side.

The front part of the porch may be glazed in, if desired, and made into a sun parlor, as French doors connect it with the living room. The open fireplace on the porch will make it a delightful spot on early autumn days.

This house may be placed on a fifty-foot lot with space to spare on one side for the driveway to the garage, which is annexed to the rear of the house from which it is readily

heated. The side entrance to the house beneath the stairway landing is convenient for motorists.

Entering through the porch and vestibule, one finds himself in a large hall from which the stairs ascend to a well-lighted landing. On one side is the living room with its fireplace, bookcases, and window seat. On the other side is the dining room with its group of casement windows and a built-in sideboard. From the hall one may go to the kitchen by way of a short passage from which opens a convenient lavatory and a second coat closet.

Special attention is called to the arrangement of the kitchen. The sink is under the windows, with cabinets on either side, and is but one step from either the range or table. The refrigerator is in the entry near the dining room door.

There are three splendid bedrooms with closets, a large bath, and sleeping porch on the second floor.

The house has a full basement with heating plant, fuel bins, laundry, and storage and vegetable rooms.

Lots, Houses, Ranches Business Property

I Can Get Them for You

Irrigated or dry ranches, Klamath Falls lots in any section of the city, or city business and residence property. My listings cover all sections of Klamath county. If you plan to buy a residence or a business location—see me.

Day or evening, phone 726-W and I'll be glad to call.

R. H. Maley

REAL ESTATE
703 North Ninth

Do You Need Money

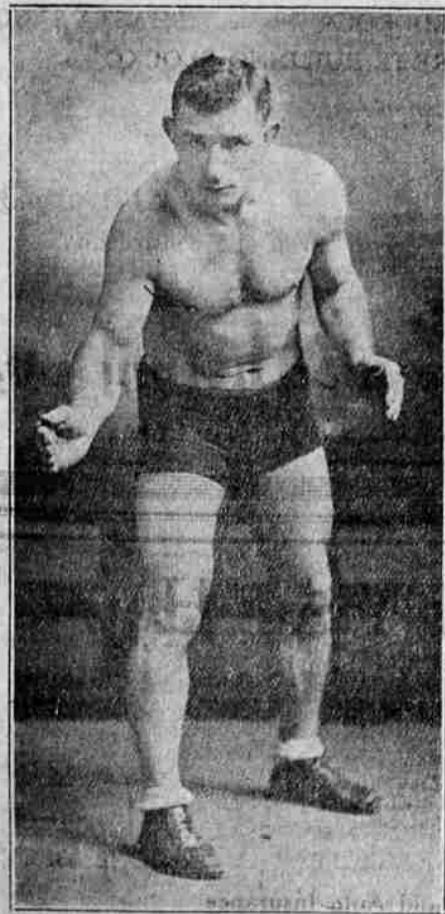
to build that home

If you own your lot, and have some money, we can loan you half the value of building and lot combined, payable like rent. Monthly payments. Make your arrangements now, before the spring rush begins, so that your dream home may be a reality before snow flies again.

There is no quicker way of making money than real estate investment in a growing town. You are growing town—the rest is up to you.

Momyer & Momyer

Real Estate Building and Loan
Phone 366



FARMER VANCE. Lower—HENRY BURKE

Little Annuals for Embroidery

Nothing gives the finish to an ornamental planting and keeps it to the lawn as completely as low growing plants of the class usually known as edging plants. We have them in both annuals and perennials. Perhaps the best known and most commonly grown is sweet alyssum, always neat and attractive with its snowy sheets until freezing weather, coupled with a pleasant fragrance. If a white edging is desired nothing is finer, using one of the compact forms, such as Little Gem.

For brilliant, burning blue, the dwarf lobellias give a wonderful mass of color all summer. There are also handsome white and light blue lobellias. Sow the seed now, sprinkling it as thinly on the soil as possible, and merely pressing it in as it is powder fine. Shield from heavy rains until the little plants are big enough to transplant and set them six inches apart. They will form a solid ribbon about the beds.

A little taller growing is the handsome lavender ageratum, which may be sown in the open ground at the present time and transplanted eight inches apart. A dainty edging plant of a variety of coloring in roses and pink is the Virginia stock, a relative of the purple rock cress of spring and giving something of the same effect. Its blooming season is short, but it is brilliant while it lasts.

For brilliant oranges and browns the dwarf French marigolds are ideal and their dwarfier cousin, known as Tagetes signata pumila, hugs the ground with fern-like foliage, making its little globe of green thickly studded with orange stars.

Dwarf candytuft in various shades is another handsome all-season edging plant to be sown now. Set these plants six inches apart. Dwarf nasturtiums are also used as edgings planted in a single line about beds, best to a variety of one color. Annual pinks of the lower growing classes make handsome cushions surrounded by rich blossoms in various shades of pink, to saffery crimsons and almost black.

Coolidge Choice Of Vacation Spot Surprises Friend
NEW YORK, May 30.—Frank W. Stearns of Boston, close friend of President Coolidge, returned today with Mrs. Stearns after two months in Italy and France.
Mr. Stearns expressed surprise upon learning that Swanscott had been selected by the president for his vacation.
Asked if he had gone aboard as an unofficial observer for the administration, Mr. Stearns replied:

Puretest Aspirin Tablets
Made from Pure Aspirin
Act Quickly
Give Speedy Relief
For Colds, Pains and Headaches
100 Tablets 49c
STAR DRUG STORE
The Rexall Store
KLAMATH FALLS, ORE.

A. F. Graham

GENERAL CONTRACTOR
Office Rooms—201-202 Winters Bldg.
PHONE 526

Heretofore the demand for cinders has been greater than the supply. We have added new and improved equipment which will enable us to supply all needs.
Orders accepted for immediate delivery

Crop Conditions Promising In All Parts Of State

PORTLAND, May 29.—H. C. Aetson or has been favorable for all small grain, except for some local damage by hail in Crook county, says the weekly crop report for Oregon issued today by the weather bureau.
Prunes and cherries continue to drop in western counties, but the prune crop in some localities is better than was anticipated. The cherry crop in Union county is said to be light. The drop of pears has ceased in some southern localities, and continues in other. Strawberries are plentiful in market. Raspberries are ripening in southern counties, and a few early cherries are turning.
Improved pasturage is reflected in the condition of livestock, which is general good to excellent. Shearing of sheep continues in many places. Stock is being moved rapidly to summer range.