

# The Evening Herald

Issued Daily, except Sunday, by The Herald Publishing Company, Office: 119 N. Eighth Street, Klamath Falls, Ore.

E. J. MURRAY ..... Publisher  
W. H. PERKINS ..... News Editor

Entered as second class matter at the postoffice at Klamath Falls, Oregon, under act of March 3, 1879.

Member of the Associated Press  
The Associated Press is exclusively entitled to the use of republication of all news dispatches credited to it or not otherwise credited in this paper and also the local news published therein. All rights of republication of special dispatches herein are also reserved.

The Evening Herald is the official paper of Klamath County and the City of Klamath Falls

SUBSCRIPTION RATES	
Delivered by Carrier	By Mail
One Year \$6.50	One Year \$5.00
Six Months 3.50	Six Months 2.75
Three Months 1.95	Three Months 1.50
One Month .65	One Month .50

THURSDAY, MAY 28, 1925

## FIFTY SIX PASS EXAMINATIONS

(Continued From Page One)

Her marks were as follows: Arithmetic, 100%; Grammar, 99%; Writing 88%; History, 85%; Civics, 93%; Spelling, 90% and Agriculture, 82%. Three other pupils of the academy made very creditable showing. They were Loraine Lavenik, Ruby Pearson and Evelyn Noonchester.

Three years ago, Cecil Matt, passed the highest eighth grade examination in the state. The boy was a pupil of the local academy.

Of the 108 pupils that took the examination, 56 passed successfully, 28 were given conditions, and 24 failed. The examination was held to be one of the most difficult ever issued from the state school superintendent's office.

The following students passed state examinations according to the official report of the examining board:

Bonanza—Roy Kilgore and Amel-

la Bunn; Oleno—Helen Marshal and Sara Schrakoff; Bly—Elba Agnes Bell; Lorella—Lynden Walker and Alice J. Brown; Plevna—Alice Holaday; Lower Poe Valley—George M. David, Hazel MacInerney, and Victor Nork; Lone Pine—Walter Weltfle; Worden—Echo McCallum; Upper Poe Valley—Jessie McFall; Malin—Olga Lamplot, Charlotte Johnson, Alice Worlow, Grace Thomason and Kamilla Klecker; Miller Hill—Robert Zetsman; Chilquin—Elizabeth Goldthwaite, Richard Hessig, Marie Larson, Grace Nixon, Verná Nixon, Pat Silvers; Beauty—Ruth Fraley and Gladys Fraley; Modoc Point—Mildred George; Lone Pine—Vincent Kemp; Sacred Heart Academy—Lorraine Lavenik, Ruby Pearson, Evelyn Noonchester and Mary Bertram; Midland—Anna Burnett and Paul Sevek; Henley—Bonnie Short, Glenn Dehlinger, Carl Lyon, Marie Schiesel, Roscoe Barkhurst and Charles Barnes; Crescent—Milford McMillan, Donald H. Brock; Summers—Mary West; Klamath Agency—Jesse N. Parker and Wilson Wiley; Merrill—Louis Hill, Burrtee O'Neil, Faye Jinnette, Ralph Good, Fred Benson, Kathryn Pope, Bernice Kandra, Alfred Carlton and Uel Dilard.

Those whose showing on the final

examination, while not entitling them to pass, but sufficiently high to entitle them to a second chance at the examination are as follows:

Bonanza—Edith Scott; Bly—Ruth Campbell; Hildebrand—Albert Woelk, Margaret Pool; Lone Pine—Charles Galarneau; Worden—Opal Wilson; Upper Poe Valley—Louis R. Roberts; Malin—William Kunz, George Potucek, Raleigh Maupin, Eliza Kirkpatrick, Charles Zumr, and Lloyd Smith; Algona—William Foster; Libby—Dale Knox; Sacred Heart Academy—Mary Calhoun; Lower Swan lake—Ora Arnett, and Zelma Stiles; Merrill—Arlene Taylor, Dan Barry, and Emmet Barry; Summers—Thelma Dearing; Henley—Paul Dixon, Leslie Stewart, Leonard Triplett and Clinton Barkhurst; Midland—Katherine Burnett, Pauline Burnett and Almond Gregory.

## S. P. SEEKING TERMINAL HERE

(Continued From Page One)

was stated was one of the interested factors in the various negotiations looking to the acquisition of additional land, since his land holdings make him master of the situation in the railroad territory, was also visited by a Herald representative and asked if he had been approached by Mr. Parker or other representatives of the Southern Pacific. He was somewhat surprised and inquired if Mr. Parker was in the city. "If he is," stated Mr. Eberlein, "I have not seen him and neither have I seen any representative of the Southern Pacific. If Mr. Parker is here to carry on negotiations for the Southern Pacific he has not been to see me and I have not talked with him."

Nevertheless, within a short time the announcement will be forthcoming that the Southern Pacific has decided to make Klamath Falls its division terminal, which will be a reversal of its former decision to place that terminal at Fuogo.

### TWO KILLED

CHICAGO, May 28.—A gas explosion in a State and Van Buren street in the Chicago shopping district, today killed two negro employes, injured a third and threw diners and shoppers into a near panic.

## AMUNDSEN IS STILL MISSING

(Continued From Page One)

Professor Hoel, geologist of Oslo university in the Norwegian capital, thinks it useless for airplanes to attempt a rescue, declaring: "It would be like looking for a needle in a hay stack."

The Norwegian defense minister, Rolf Jacobsen, is quoted as insisting that a relief party ought to be undertaken soon.

### RESERVATIONS MADE

Quota for Community Dinner Nearly Completed

According to Lynn P. Sabla, secretary of the chamber of commerce the 250 reservations for the fifth annual community dinner to be given in the White Pelican hotel on Friday night, May 29, are going fast and the quota is fast being completed. Ex-Governor Thomas Campbell of Arizona, will be the speaker of the evening having chosen for his subject, "Reclamation."

"It is inconceivable, he asserted, that any man, however good a pilot, can fly from the north end of Spitzbergen for a distance of 600 miles in a straight line and drop down upon the North Pole, or even within fifty miles of it."

MacMillan, who will head the MacMillan arctic expedition arrived here today to confer with officials of the National Geographic Society and Naval officers, including Admiral Moffatt, chief of the naval air service.

"If Amundsen's planes should be down in rough ice it would take several days to construct a 'run' for his planes," Mas Millan continued. "If he missed Spitzbergen on his return, he is down, adrift or out of gas with the remote possibility of rescue. If he is down at the North Pole and cannot rise, which is very unlikely, I fear the worst in spite of his one month's provisions. To walk over the rough and snow covered ice of the polar sea, intersected with open and thin ice covered leads, for 600 miles to Spitzbergen or 413 miles

to Cape Columbia at this time of the year is utterly impossible for the best of men."

The rescue work today was stimulated by federal aid and the workers cleared the main shaft of the mine nearly two thousand feet down. It was found, however, that an almost solid wall of slate had closed the shaft, perhaps cutting the men behind it off from the foul air caused by the three explosions nearer the surface, but at the same time closing their only avenue of fresh air.

Experienced miners were of the opinion that the men could not be extricated before tomorrow. They held no hope that any would be found alive.

### RESERVATIONS MADE

Quota for Community Dinner Nearly Completed

According to Lynn P. Sabla, secretary of the chamber of commerce the 250 reservations for the fifth annual community dinner to be given in the White Pelican hotel on Friday night, May 29, are going fast and the quota is fast being completed. Ex-Governor Thomas Campbell of Arizona, will be the speaker of the evening having chosen for his subject, "Reclamation."

## \$90 Tule Lake Charge Bar To Farmer, Claim

Why should any ex-service man, or anyone else for that matter, stand for the Reclamation Service charge of \$90 per acre on unimproved land in the Tule lake bed when irrigated land in southern Idaho, with the ditches all in, with the land leveled and under cultivation can be purchased for from \$25 to \$100 per acre?

That is the question perplexing George Foulkner of Pocatello, Idaho a business visitor here.

"I haven't seen the Tule Lake land, but I have helped to put more than one irrigated tract in condition," Foulkner said.

"For this reason I know that the \$90 represents but a small portion of what it will cost to get this land in shape for irrigation, and I marvel at the thought that any government bureau would pretend that men could make a living on unimproved land on which \$90 per acre was only the initial cost."

"It may sound sweet from the sanctuary of a government office desk to say that these charges are

trifling considering the value of the land.

"That's bunk. Southern Idaho has some wonderful land about to be irrigated. I've been running irrigated land for nearly 20 years, and I'd laugh in the face of anyone who proposed to me that I take this land, pay \$90 an acre for it, and then go on and spend the money necessary to bring it into a successful state of cultivation."

Foulkner, who has been looking over land in the Fort Klamath area, will leave tomorrow morning for the Imperial Valley in California.

### JOE'S DAUGHTERS

Members of the Joe's Daughters organization are planning to entertain their friends with an entertainment which they have named "Shenanigans." The girls have been working hard to make the affair a success and will give the entertainment on Friday night, May 29.

### VISITING HERE

Mrs. Annie Tricster, resident of Davenport, Iowa, arrives in Klamath Falls last night to remain for some time visiting with friends and relatives in Klamath Falls and Klamath county.

# Better by Miles

## Ten Gallons Will Tell!

You will find economy in the first ten gallons of Union Gasoline. But your real gain will be at the end of 10,000 miles. Then your motor will testify.

The difference between Union and most gasolines is one of quality. There's no mystery about it.

Union Gasoline is not made to sell at a price. Yet it is the most economical motor fuel on the market today. Its chief economy is in saving upkeep costs.

Union Gasoline is non-detonating. This means that its power-impulses are not sledge-hammer like. Its explosions progress—with a resulting power that is smooth.

With Union, your motor starts quickly—accelerates with a swift, vibrationless pick-up—and easily attains an even, gliding speed.

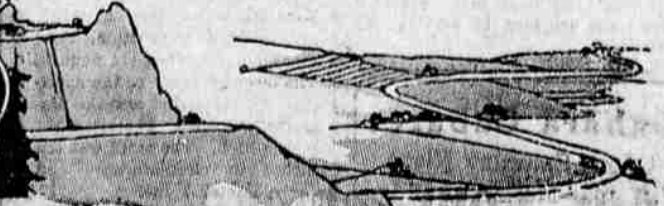
If a better gasoline were possible, it would be made by the Union Oil Company. And sold wherever you see the sign "Union Gasoline." At Union Oil service stations and independent dealers of the first class everywhere.

# Union Gasoline

Non-Detonating

Union Oil Company of California

Also Producers of Aristo Motor Oil



## Specials for Friday and Saturday

- |  |     |  |     |
|--|-----|--|-----|
| Creole crisp, a delicious confection lb.....   | 37c | Genuine gold plated Gillette razors.....           | 79c |
| Peter Pan soap, regular 10c values, 4 for..... | 25c | Assorted colors, rubber aprons, 50c val, each..... | 29c |
| Beef, Iron and Wine, pinnts.....               | 79c | Padre almond castile soap, 15c value, 3 for.....   | 33c |

### REBATE COUPON

This coupon good for \$1.00 credit on the purchase of a Sunbeam Electric iron. Regular price including cord and steel fireproofcase \$8.50.

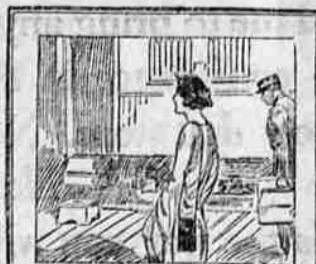
## Store News

Drugs and drug sundries are wholesaled like anything else—the larger the quantity you buy the better price you get and in turn the cheaper you can sell to the ultimate consumer. A lower price on the drugs you buy doesn't mean anything if they are not fresh, and to keep them fresh they must be sold and sold quickly. The average small town drug store must either buy in small quantities and sell a fresh stock or else buy in large quantities and sell a stale stock. That is where we have a decided advantage and where we fill a distinct need. We have three stores and one buyer for them all, which gives us a new clean stock to sell at prices below the average.

## Brunswick Phonographs

Brunswick Phonographs, Radiola's and Records. New Brunswick Records every day. No waiting for monthly or weekly releases.

## Suggestions for Outings



The outing season is now on. We have many items in our stock that will add comfort and pleasure to your summer outing trip.

- |  |                  |
|--|------------------|
| Picnic sets 35 pieces for six people, each.....  | 25c              |
| Assorted best quality hard candies in bulk, pound.....   | 50c              |
| Assorted hard candies in sealed glass jars,.....   | 20c and 40c      |
| Kodaks and Cameras.....  | \$2 to \$30      |
| Kodak films (to fit all makes and sizes of cameras)  |                  |
| First aid kits (small assortment of useful supplies)   | \$1.00           |
| Thermos bottles.....   | \$1.50 to \$7.00 |
| Thermal Jugs, One gallon capacity.....   | \$5.00           |
| Colored glasses and goggles.....   | \$2.00 to \$2.00 |
| Assorted Colored Sun visors.....   | 50c to \$1.00    |
| Mosquito lotions and creams.....   | 25c and 50c      |
| Lotions creams and powders for tan and sunburn in goodly variety and reasonably priced. Bring us your outing films for finishing. Quality work at the right price. |                  |

# Currin's for Drugs

PORTLAND AND KLAMATH FALLS, OREGON