

You Cannot Buy GREATER VALUE

The 1925 Star Car with the Million Dollar Motor is the car for you. The car with a hundred and one advanced features. Features which competition may have tomorrow.

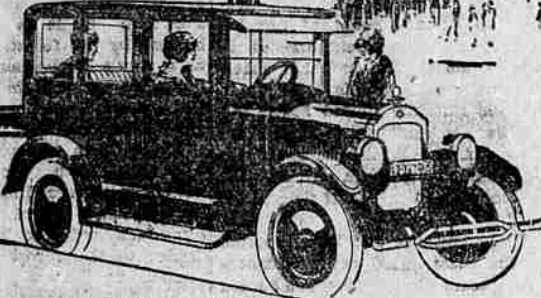
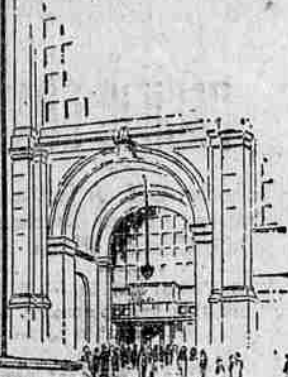
High-class, economical features which set the 1925 Star Car in a class by itself.

It is the car for you. Its sturdy perfection will save you money in every mile of its long life.

No car in any price class gives a greater return on your money.

See the 1925 Star Car which is revolutionizing low-cost transportation today. Drive it! You'll understand.

The Car for the Millions with the **MILLION DOLLAR MOTOR**



The 1925 Star Sport Sedan. The car for the millions with the Million Dollar Motor.



BUICK AND STAR GARAGE
Opposite White Pelican Hotel

THE GREATEST VALUE BUY IN THE WORLD

Pay a Deposit Now
We'll Hold What You Want Until Pay Day

Come in now and pick out any of the hundred and one things that you need in the furniture line and pay us a small deposit and we will be glad to hold what you choose until pay day.

Sale is still on

And the big reductions we have made in every line are still in effect. This is your opportunity to supply your needs at a

BIG SAVING

Shop Early in the Week

Extra Specials

Pure Silk Kapock Floss Mattresses

There is a big difference in Silk Floss mattresses for the reason that some manufacturers leave the seeds in the fiber to give it weight. Before you buy any silk floss mattress ask to see a sample of the floss.

40 Pound Silk Floss Mattresses

Fine grade of art ticking or heavy standard St. Francis brown striped ticking. Full Imperial rolled edge. Sale price

\$22.50

35 Pound Silk Floss

The same as above except it is lighter weight. Sale Price

\$19.50

30 Pounds. A Still Lighter Mattress

But the same except it has a plain rolled edge. Sale price

\$14.25

Don't buy a silk floss mattress weighing less than 30 pounds for it will not give you service.

Dining Set

We have a Queen Ann set of a table and six chairs, Jacobean finish, which is fit to furnish the dining room of the most fastidious home owner. There is nothing that adds charm to a home like an elegant dining set, and there is nothing quite so elegant as this Queen Ann suite with its six blue leather seated chair.

Regular Price, \$78. Sale price

\$58

Davenport

Biltwell Overstuffed Davenport, with an exceptionally attractive covering. Regular, \$175. Sale price

\$85

Bufflin Bed Davenport

Cut velvet cover. Regular \$165. Sale price

\$120

Everything on sale except some pieces of Dornbecker line

Just arrived, a large shipment of felt base floor covering in a wide range of colors and patterns.

Regular \$1.00 sq. yd. Sale price **65c** sq. yd.

This makes a very desirable and long wearing floor covering at a very moderate cost.

Kitchen Ranges

We have handled the famous Toledo line for 18 years and we have yet to sell one that hasn't given perfect satisfaction. Regular \$70. Sale price

\$58.50

NOW IS THE SEASON FOR LAWN MOWERS, GARDEN HOSE AND REFRIGERATORS AND WE ARE IN A POSITION TO FILL YOUR NEEDS AT UNHEARD OF PRICES. SEE THEM TODAY.

Mordoff & Woolf

Not going out of business--Just going after it

ACROSS STREET FROM PINE TREE THEATER

KLAMATH VALLEY HOSPITAL

Centrally Located

403 Pine Phone 497

To care for all new mothers right is our pardonable delight.

White Pelican Beauty Shoppe

Under the management of Miss Inez Thackara

Ray Watson assisting in ladies' and kiddies hair bobbing. White Pelican Hotel

Lumber for Sale Cheap

- Boards—
- Shiplap—
- Dimension—
- Siding—
- Lath—
- Mouldings—

In fact practically all items for construction or repair work—

Drive out and look it over—

Pelican Bay Lumber Co.

FIGHT PLANNED ON JEWEL TAX

SALEM, May 11.—A direct attack on the five per cent complete tax on jewelry was made by A. A. Keene, president of the Oregon retail jewelers association, in the opening address of the 16th annual convention of the association here this afternoon. "The battle for complete tax relief should, and will, be continued," declared Keene. "The tax was originally made by the jewelers as a war measure. However, it was not the jewelers' and there is no reason why we jewelers had been expected to pay."

Keene intimated that the tax is a considerable handicap to jewelers throughout the country, branded the tax as an unfair discrimination against one particular line of business and declared that jewelers already contribute to the federal treasury through payment of heavy customs duties.

Nearly 100 delegates from all parts of the state are present at the convention, which is being held here today and Tuesday. Governor Pierce preceded Keene with a short address of welcome at this afternoon's session.

A short address was made by F. M. French, of Albany, secretary-treasurer of the state organization. His speech consisted largely of a report of the national jewelers convention at St. Louis a year ago. A talk on "National publicity" was given by F. A. Heltkemper. Miss Ella Meade spoke on "Window decorating."

AT THE PINE TREE

The scene is on a steamer approaching Rio de Janeiro.

Christine Montague, the beautiful wife of Dr. Alan Montague, the noted specialist, is fleeing to South America with a playwright and poet, Ivan Vianney. She has taken her little five-year-old boy, Jaffy.

Denied the love of her first husband and the attentions of her second, Christine is seeking happiness in her own way when the law steps in.

An officer boards the boat with a court order for little Jaffy. Christine realizes she cannot "beat the game."

The scene which follows, as the mother fights for her son, is another husband perfectly sane?

of the dramatic climaxes in Thos. H. Ince's First National production, "Christine of the Hungry Heart," which appears at the Pine Tree theater tonight.

AT THE LIBERTY

The value of solid American business asumen and that good old Yankee quality colloquially known as pep is shown in vivid fashion in "On the Stroke of Three," the current attraction at the Liberty theater. Kenneth Harlan, who divides the starring honors with Madge Ballamy, has a proposition to put over and he does it in approved Rotarian and Kiwanian style. He sets about his task with a will and never gives up until success crowns his efforts. This, together with a delightful vein of romance, makes a photoplay of engrossing interest for persons in all walks of life.

MALIN

Mrs. J. W. Sanders and Mrs. Ray Fogle were shoppers from Malin in Klamath Falls Tuesday.

The play on which the pupils of the Malin high school have been practicing will be given May 23.

Mr. and Mrs. Ray Pickett expect to leave soon for Sprague River, where they have bought a pool room, taking possession May 1. They will make extended improvements, building onto the building already occupied. They plan to have a hotel in connection with the pool room.

Miss Ella Smith left Friday for Klamath Falls, where she expects to stay for some time.

Clyde Van Meter is back in Malin after spending some months in Straw, where he has been working.

Everett Hickman is quite ill with pneumonia but reported improving.

Mrs. W. S. Foster, who has been teaching the Grandview school, closed the year work Friday and has gone to Klamath Falls, where she will spend part of her vacation.

Fred Rowland, editor of the Malin Progress, has been on the sick list for the past week.

Mr. and Mrs. John Bailey were Malin visitors from Shasta View Friday.

Famous detective says women are poor investigators. We say we doubt if he is married.

Can you imagine the surprise of a Boston woman when a jury found her husband perfectly sane?