

The Evening Herald

Issued Daily, except Sunday, by The Herald Publishing Company, Office: 119 N. Eighth Street, Klamath Falls, Ore.

E. J. MURRAY Publisher
W. H. PERKINS News Editor

Entered as second class matter at the postoffice at Klamath Falls, Oregon, under act of March 3, 1879.

Member of the Associated Press

The Associated Press is exclusively entitled to the use of republication of all news dispatches credited to it or not otherwise credited in this paper and also the local news published therein. All rights of republication of special dispatches herein are also reserved.

The Evening Herald is the official paper of Klamath County and the City of Klamath Falls.

SUBSCRIPTION RATES

| Delivered by Carrier | | By Mail | |
|----------------------|--------|--------------|--------|
| One Year | \$6.50 | One Year | \$5.00 |
| Six Months | 3.50 | Six Months | 2.75 |
| Three Months | 1.95 | Three Months | 1.50 |
| One Month | .65 | One Month | .65 |

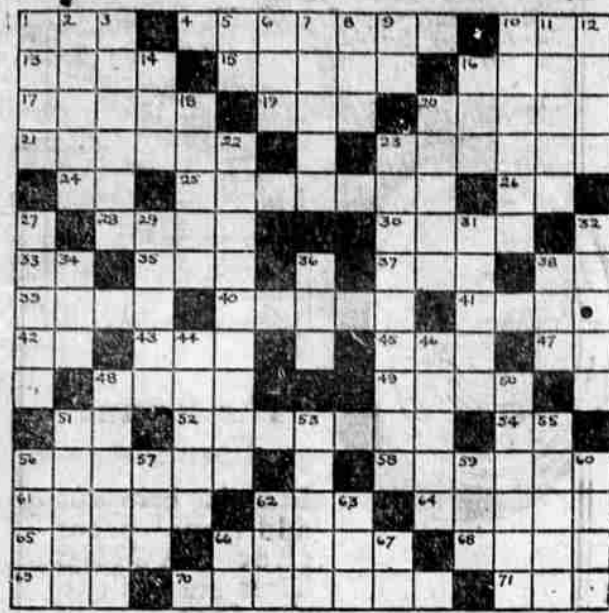
TUESDAY, MARCH 31, 1925

DRUG STORES INCREASE EIGHT-FOLD

A measure of the nation's drug business is indicated in the increase of the number of dealers—from 6139 "apothecaries and druggists" in 1850 to 49,000 "dealers in drugs and chemical and pharmacists" in 1924. To the competition of manufacturers for the orders of dealers is traceable the duplication of products and simulation of specialties, says the review. Of the consequences of those practices, the association says, "it is now fairly well settled that the inventory of a well-stocked wholesale house shows entries of from 45,000 to 60,000 separate articles, and the retailer carries from 8,000 to 12,000 items at all times."

To move those "45,000 to 60,000 separate articles" is a problem of distribution faced by 245 wholesale houses located in 165 cities. To know that 45,000 different things are produced for one branch of business, and to know that all of those things have definite use is to approach a new understanding of the refinements and complexities of modern life.

TODAY'S CROSS WORD PUZZLE



HORIZONTAL

1. A crib for corn or four or coal.
4. Summer, winter, autumn and spring.
10. To drink dog fashion.
13. Surface measure of a plane region.
15. Metric liquid measure.
16. Back part of the neck.
17. A plank.
19. An untruth.
20. A gear with a right angle bevel.
21. Comes in.
23. One who writes a book.
24. Direction of Cape of Good Hope from us.
25. Listen.
26. Half an em.
28. A very heavy cord.
29. Dips (especially bait bob).
32. Bone.
33. Boggy land.
37. Frozen liquid.
38. Seventh note in scale.
39. Trousers, vest and coat.

VERTICAL

2. Presses.
3. Tidier.
5. Measure of cloth.
6. To be sick.
7. Steps used for ascending a fence.
8. Rock containing metal.
9. Point of compass.
10. Shaping machines.
11. Garment used to protect the dress.
12. To gaze.
14. Part of verb to be.
16. Egg of a louse.
18. To arrange cloth in folds.
20. Melody.
22. Marked with a design by means of a perforated pattern.
23. Appendages.
27. Falls to keep.
29. Frequently.
31. Gongs.
32. Driver on horse's back.
34. The total.
36. Wittlelem.
38. Vessel used for washing clothes.
44. More mature.
46. More recent.
48. Positive terminals of an electric source.
50. Neater.
51. The great artery.
53. A blow on the nose.
55. A groove within the ear.
56. Humbug.
57. To misaw.
59. Substance used in making lacquer.
60. Net of lace.
62. To mimic.
63. A bag.
66. Therefore.
67. Second note of scale.

YESTERDAY'S SOLUTION

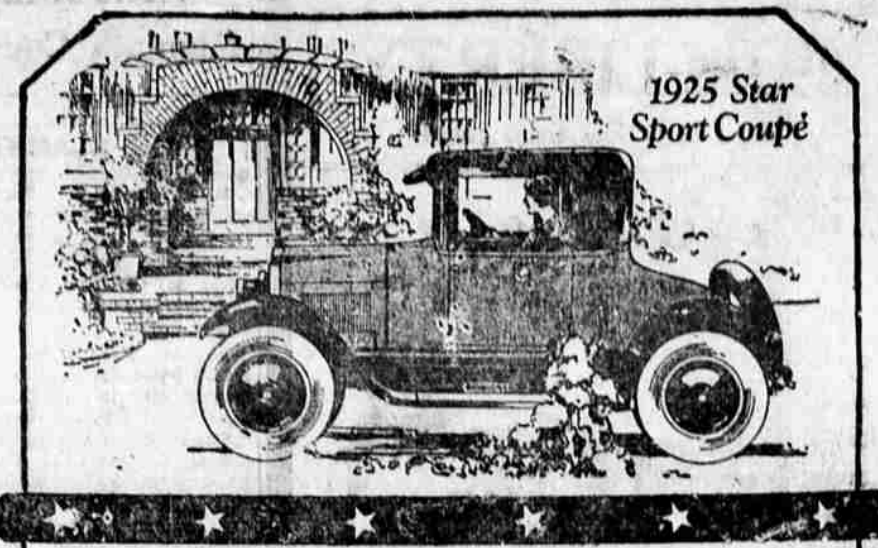


Justice Sits Unmoved Despite Big Families

HONOLULU, March 31.—Establishment of a nursery on the third floor of the federal building here, close to the portals of the United States district court, for infants whose mothers are being tried on prohibition charges, is advocated by Judge William T. Rawlins.

Recently five Japanese women attended court, each with an infant in arms or one hanging on her skirts. They were only witnesses, but often, court attaches say, women convicted of bootlegging appear for sentence with five or six young children, claiming parenthood of them all and pushing them forward in a plea for mitigation.

We are living in hopes that spring will make people too lazy to work crossword puzzles.



The Handsomest Coupe Built At the Low Price You Can Afford

Safety!

Four-Wheel Brakes

No skidding with 4-wheel brakes—that's why all high-priced cars have them. The 1925 Star is the only low-priced car with four-wheel brakes.

Distinction in every line—finished in flint grey and slashed with snap black.

Seats three comfortably; one piece windshield; balloon tires; four-wheel brakes; and the marvelous new Million Dollar Motor—quick pick-up, abundant power.

The low price makes this the ideal coupe from the standpoint of beauty, utility, economy. See this latest 1925 Star creation—"Tomorrow's Car Today". At the new low prices.

BUICK AND STAR GARAGE

Opp. White Pelican Hotel

[See It at Your Dealers. Drive It. Compare It]



PAR on April 2 COPCO 7% Preferred Capital Stock advances to \$100 a share

Seven months ago The California Oregon Power Company made a public offering of 10,000 shares (\$1,000,000.00) of 7% Preferred Capital Stock for subscription by its customers and friends in the territory it serves.

Today, only half of the entire offering remains unsold.

Approximately 5,000 shares have been purchased direct from the Company at the price which has heretofore prevailed—\$98.00 per share, with convenient terms at \$5.00 per share per month if desired, and with interest at 6% allowed on all installments paid.

Increased Value for Investors

Prevailing market conditions, the country-wide demand for good hydro-electric securities, and the approaching completion of the Company's new developments, which will materially increase the net earnings, now justify this increase in price of the Preferred Capital Stock.

Announcement of the advance of \$2.00 per share on April 2, 1925, is published at this time for the advantage of stockholders and prospective purchasers.

For information concerning the 7% Preferred Capital Stock and interest-bearing partial payment plan, ask any member of our organization or simply clip and mail the coupon below.



THE CALIFORNIA OREGON POWER COMPANY

Offices:
OREGON
Roseburg Medford Grants Pass Klamath Falls
CALIFORNIA
Yreka Dunsmuir

THE CALIFORNIA OREGON POWER COMPANY MEDFORD, OREGON

Please send me full information about your 7% Preferred Stock and special partial payment plan.

Name _____
Address _____

Ask any member of our organization—or mail this coupon—today!

Look Here

Come to the "Little Store doing the Big Business" and investigate our Liberal credit plan and Special Low Prices. Only \$1.00 down on any article in our store. Balance on easy payments.

Specials

- \$12.50 Large Mattress, reduced to\$10.00
- \$ 8.50 Wool Blankets, reduced to\$ 6.50
- \$12.50 Wool Auto Robes, reduced to\$10.50
- \$ 8.00 Large Quilts, reduced to\$ 6.00
- \$ 8.00 Colored Bed Spreads, reduced to\$ 6.00
- \$10.00 Nice Strings Pearls, reduced to\$ 7.50
- \$ 8.00 Good Electric Irons, reduced to\$ 6.75

Also Congoleum Rugs, large and small-Axminster rugs, Indian blankets, Rogers Guaranteed Silverware, Lace Curtains, Sheets and Pillow Cases, Table cloths and Fancy Table Runners.

Klamath Home Supply Co.

1140 Main St. - Near White Pelican Theatre
Open Evenings