

# Looking Ahead

Is the Wise Man's Formula of Success  
If you Rent—

**Build Now and Save Money**

If you already own—

**Build Again**

and increase your income

You may already have the desire but are uncertain how to proceed

I WILL GLADLY HELP YOU

## H. R. Perrin

209 Hopka Bldg. Phone 250-J

"Consult the Man Who Knows"

## Lots, Houses, Ranches, Business Property

### I Can Get Them for You

Irrigated or dry ranches, Klamath Falls lots in any section of the city, or city business and residence property. My listings cover all sections of Klamath county. If you plan to buy a residence or a business location—see me.

Day or evening, phone 726-W and I'll be glad to call.

## R. H. Maley

REAL ESTATE  
703 North Ninth

## Do You Need Money To Build That Home?

If you own your lot, and have some money, we can loan you half the value of building and lot combined, payable like rent. Monthly payments. Make your arrangements now, before the spring rush begins, so that your dream home may be a reality before snow flies again.

There is no quicker way of making money than real estate investment in a growing town. You are in the growing town—the rest is up to you.

## Momyer & Momyer

Insurance Real Estate Building and Loan  
Hopka Building Phone 366

**CINDERS**

Cinders are economical and practical for roads and driveways as they pack and bind, making a very smooth pavement-like surface

## A. F. Graham

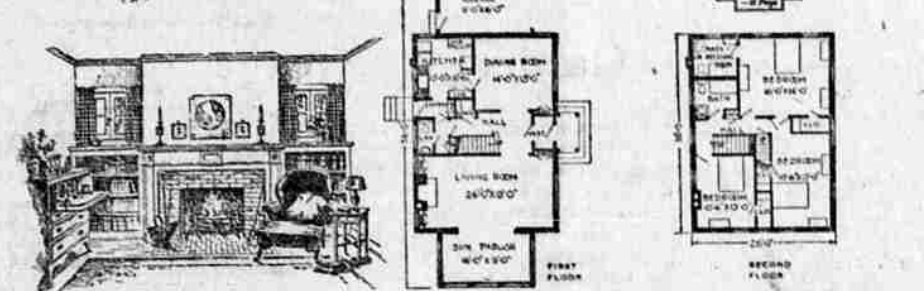
GENERAL CONTRACTOR  
Office Rooms—201-202 Winters Bldg.  
PHONE 526

Heretofore the demand for cinders has been greater than the supply. We have added new and improved equipment which will enable us to supply all needs.

Orders accepted for immediate delivery

**CINDERS**

## Modern Interpretation of the Ever-Popular New England Colonial Style



Six-Room House No. 631

Designed for American Face Brick Association

THE designer of this house has gone back to the days when the American Colonists had become prosperous and had begun to build those delightful houses that still charm the tourists in New England. Those were days when every cultivated man and woman took a genuine interest in architecture, and the carpenter was a real craftsman. Small wonder that their houses continue to be models and inspirations for us after a hundred and fifty years.

Furthermore those Colonists were home-loving folks, so the interior arrangements they developed have scarcely been improved upon since their day. We have more conveniences in our modern homes, and that is really the only way in which we have progressed beyond the heritage that they handed down to us.

On the exterior we have, however, at our disposal materials that they never even dreamed of. Modern stucco and face brick, with its limitless range of color tones and textures, were unknown to them, and impart to our houses a beauty that was denied to them. Face brick not only gives color to the walls but lends a texture that is fully as attractive as color.

The house illustrated above will fit nicely on a fifty-foot corner lot, but if it is built on an inside lot it should have seventy-five feet. It could be built with the side toward the street on a narrower inside lot, but the front elevation is so attractive that it should be in full view.

The interior arrangements are both attractive

and convenient. As was common in this type of house, the central hall is entered through a good sized vestibule. On the right we enter the commodious living room with a hospitable fireplace at one end, and beyond this is the sunporch, which is to all intents and purposes a part of the living room the year round.

On the other side of the hall, a pair of French doors open into the dining room which is almost square, and behind this room we have the kitchen. The layout of the kitchen will delight any housekeeper. Note that both sink and stove are placed under windows where they will have full light at all hours. There are two roomy cabinets in the kitchen and another over the refrigerator in the rear entry. A lavatory has been conveniently placed in the rear hall.

An open stairway ascends to the second floor with its three large, well-ventilated bedrooms, all of which have ample closets. The dressing room adjoining one of these rooms could easily be converted into a second bathroom. And if more sleeping quarters are desired the space in the attic can be utilized to good advantage. The attic would also make a fine playroom for the children.

In the basement provision has been made for heating plant, coal room, laundry and vegetable cellar.

The ceiling heights on the first and second floors are 8 feet and 6 inches. The cubic content of the house is 31,500 feet, and of the garage, 2,100 cubic feet.

## The Screen

### AT THE LIBERTY

"Border Justice" which is the attraction today at the Liberty Theatre is all that lovers of this type of drama can ask for and Bill Cody the star is one of the newer Western Stars that is making good all over the country.

We wish to call your especial attention to Sunday and Monday's bill at the Liberty Theatre. For here is entertainment plus. Think of it Norma Talmadge and Eugene O'Brien in the same picture without doubt two of the most celebrated exponents of the silent drama, take these two in "The Only Woman" pronounced by all critics as the greatest melodrama of the year and you are assured an evening of unadulterated pleasure. You have seen ship wrecks and fights but believe us you have never seen any thing to compare with the thrilling shipwreck and fight screened in "The Only Woman."

### AT THE PINE TREE

This unusual state of affairs exists in Alan Crosland's newest production for Paramount, "Contraband," which opens at the Pine Tree tomorrow.

Two of the villains are Noah Beery and Edwards Davis who have long made a profitable business of

impersonating scoundrels on the screen. The names of the other two villains are withheld inasmuch as their identity is concealed until the end of the story.

"Contraband" was adapted from the screen by Jack Cunningham from Clarence Riddington Kelland's novel and Saturday Evening Post serial by that name.

Lois Wilson, Beery, Raymond Hatton and Raymond McKee are featured in the leading roles.

The supporting cast includes such well known players as Charles Ogle, Lillian Leighton, Victor Potel and Alphonse Ehler.

### COURTS

#### Deeds

Klamath Corporation to George W. Cocolum. 3-20-25. \$50 I. R. S. Mills Second Addition, lots 7, 8, block 20.

H. H. Van Valkenburg et ux to J. Y. Tipton. 2-26-25. \$1.00 I. R. S. Original Town, lot 3, block 23.

Frank W. Patterson et ux to Jordan Dixon. 3-17-25. \$500.00 consideration. Hillside Addition, lot 4, block 30.

#### Miscellaneous Filings

U. S. A. to John R. Fogg. Patent. 3-20-24. (320 acres.) SE 1/4 SW 1/4, W 1/2 SE 1/4, NE 1/4 SE 1/4 of Sec. 5; NE 1/4 of Sec. 8, Twp. 39, Range 12.

Another sure sign of spring is when you wonder if you hear a saw mill or a mosquito.

All this water in flooded rivers comes from the spring.

## Wanted

The Herald wants clean cotton, calico or linen rags; no ends or pieces.

10 cents a pound

## Flowers For Everyone

Many annuals indispensable for cut flowers and giving a great show of bloom have such a short season or one so late in the season that they are not desirable for the flower garden. The aster is one of these. While there is no annual that gives more beauty and greater wealth of bloom when well grown, the bed it occupies will be flowerless for the first half of the summer, as the great asters do not bloom until August and September.

Cosmos is another late-blooming annual. Bachelor's buttons or centaureas are early bloomers, but of short season.

Cutting gardens in conjunction with the vegetables are the best place for plants of this nature where they can be grown in rows and cultivated effectively as the vegetables. It is also undesirable to strip beds in the flower garden of bloom for bouquets when the display is desired to ornament the garden and surplus rows of plants for cutting can be grown in the cutting garden.

Plants for cutting (also) will flourish better with constant cultivation and fertilizing such as the vegetables receive include aster, stocks, scabiosa, or morning glories, the marigolds, calendulas, annual chrysanthemums, sweet peas and gladiolus bulbs.

Gardens of large extent now have a cutting patch devoted exclusively to annuals, perennials and bulbs to furnish bouquets, while the plants in the flower garden are left to give their display and only the fading bloom is cut to maintain the plant in blooming condition. It is a practical idea, and one well worth practicing. As the cutting

garden is not intended for display there is no compunction about cutting the bloom with lavish hand.

It furnishes a supply of bloom to give away to guests when the generous gardener would hesitate to cut the bloom from beds in the garden and ruin the display, but would probably do so.

Intensive culture all season with the application of fertilizer is much more practical when flowers for cutting are grown in a reserve garden, as are the vegetables.

## SENATOR CAPPER IS OPTIMISTIC

Farmers Will Be in Fine Shape This Year, Legislator Predicts

CHICAGO, Mar. 27.—Senator Capper of Kansas, here enroute to his home from Washington, sees prospects of a prosperous year from agriculture, a business revival when farmers market the next crop and come back for the cattle industry within a year.

"If we have only a fair crop and a good price, the farmers will be in fine shape this year," he said. "His financial improvement last season did not apparently result in the increased buying power many were looking for."

We still maintain almost any man can make a success if he has enough chances to practice on.

## For a Better Town

THESE pages are prepared with the idea of aiding Klamath Falls home owners in their efforts to make this town more beautiful—A better place to live.

DUE to the cooperation of the advertisers on these two pages, we are now enabled to offer the first of a series on home gardening and flower growing.

FROM week to week other articles will be added, with the idea of making this section a real aid to community betterment.

The Evening Herald