

Give Your Truck More Traction

Use Seiberling Cords

It's Your Turn to Try Them

SEIBERLING CORDS		Portage Cords (Seiberling Built)	
30x3½, 4-ply	\$12.50	30x3	\$8.00
30x3½, 6-ply	\$15.50	30x3½	\$9.50
33x5 8-ply	\$40.00	30x3½ Goodyear change-over tire and tube	\$9.00
32x4½, 8-ply	\$32.00		
30x5, 8-ply	\$37.20		
32x6, 8-ply	\$58.00		

BALSIGER MOTOR CO.

AUTHORIZED FORD SALES AND SERVICE

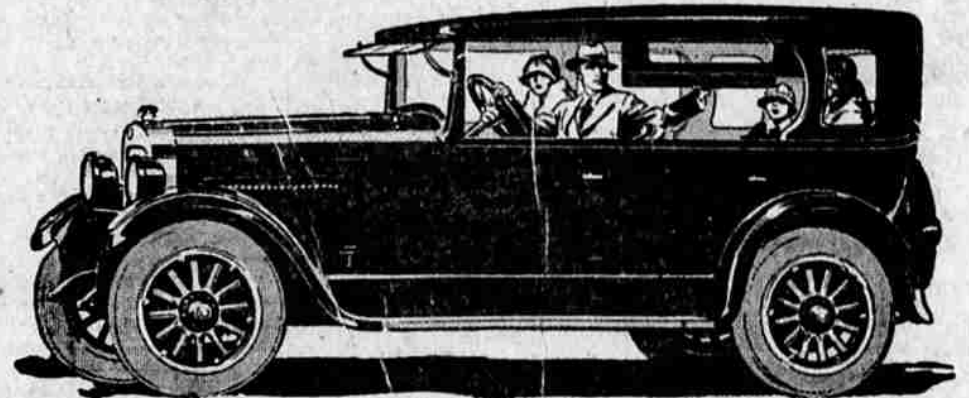
Only STUDEBAKER builds the Duplex

\$1145

The New Standard Six Duplex-Phaeton—price f. o. b. factory

THERE is only one car in the world that combines the advantages of an open car with the protection of an enclosed car—yet sells at open-car price. It's the Duplex — and only Studebaker builds it.

Duplex models are also available on the Studebaker Special Six and Big Six chassis



DUNHAM AUTO COMPANY

Sixth and Oak - - - Phone 52-W

THIS IS A STUDEBAKER YEAR

east



and the way to go

Go via one of Southern Pacific's three great routes—return on another if you choose.

SUNSET—through the romantic Southwest; enjoy the New Sunset Limited to New Orleans.

AMERICAN CANYON—San Francisco via Great Salt Lake and Ogden. The Overland Limited and Pacific Limited to Chicago; St. Louis Express to St. Louis.

SHASTA—through service daily to Portland and the Puget Sound country—thence east through the Northwest.

For fares, reservations, route booklets and full information, ask

Southern Pacific

J. J. MILLER, D. F. & P. A.

517 Main St.—Phone 709 Klamath Falls, Ore.

POST OFFICE WILL DISPOSE OF STAMPS BEFORE APRIL 15TH

Postmasters at all post offices are requested to dispose of excess quantities of 1 cent stamps before

April 15, by substituting 1 cent stamps for other denominations as far as possible on parcel post and by the sale of 1 cent stamps in lieu of 2 cent stamps and higher stamps.

The postmaster also is advised to increase the sale of 1 cent envelopes to local patrons desiring to take advantage of the old rates.

After April 15 postmasters will close out stocks of 1 cent envelopes remaining on hand by affixing ½ cent stamps and 1 cent stamps to the envelopes and their sale to the public for use with first-class or third-class mailings. Patrons holding unused 1 cent envelopes after April 15 will be requested to affix additional postage and use them for first-class or third-class matter.

The postal department is issuing a new 1½ cent postage stamp and a 1½ cent embossed stamped envelope for use in connection with the new rates of postage, effective April 15. Also a ½ cent stamp is being issued to be used with existing private and post office stocks of 1 cent stamps and stamped envelopes.

MODELS FOR HECTORS
Miss Helen Abbey makes Big Hit at Fashion Show Last Week

Through a slight error, Miss Helen Abbey was reported as having modeled for Moe's store, whereas it develops that she offered her services to Hector's store. Recognizing the request of Hector's store the above correction is made.

TO POST STREAMS

Game Warden Barnes Receives Instructions Concerning Streams

With the same regulations in effect as last year, District Game Warden Marlon J. Barnes will post trout streams in Klamath that are utilized for egg taking purposes. The following streams will be closed: Seven Mile creek will be closed to fishing the entire year from its confluence with the Weed canal to the point on the creek where Short creek flows into it; Spencer creek closed all year from Buck lake to the mouth of Spencer creek; Wood river and tributaries, closed till June 15; Klamath river closed till June 15 for a distance of 4000 feet below and 2000 feet above Spencer creek; Link river, 200 feet above and below the dam will remain closed the entire season.

MRS. SHIVE ILL

Influenza Attacks Keep Many Klamath Falls Persons Indoors

Mrs. Oscar Shive is among those suffering from attacks of influenza which has been so prevalent during the past month in the entire country. She was reported as highly improved this morning.

LEAVE FOR DIAMOND LAKE

Phil Moteschenbacher Leaves With Crew for Famous Hatchery

With a crew of experienced men and with the prospect of having a second crew in the near future, Phil Moteschenbacher, superintendent of the Diamond Lake fish hatchery, left Klamath Falls last night for Diamond lake to get troughs and other equipment in the fish hatchery in condition for the season of egg taking which will be under way shortly after April 1. Moteschenbacher hopes to take over 17,000,000 eggs—the record of last year—and to reduce the loss to the normal of 20 per cent. The superintendent's crew was composed of Atwood, Johnson, Erickson, Burghunduff, Stewart, Smith and Mr. Moteschenbacher. It will take between three and four days to make the trip, most of which will have to be negotiated with snow shoes and sleds.

The Persian hound is becoming the popular dog in London. The booch hound is the popular dog here.

Our objection to a child born with a silver spoon in its mouth is it hates to grow up and stir for itself.

EVERETT TRUE

BY CONDO



BY GOSH, THAT'S A WOMAN FOR YOU!!! I SEE ONE THE OTHER DAY GET IN FRONT OF---



DON'T TALK TO THE MOTORMAN!!!



BE FAIR TO YOURSELF
-MAKE THE
Folger Coffee Test
then you'll know what brand of coffee you'll want to use regularly
THE BEST COFFEE WINS

Ford

Weekly Purchase Plan

Invest a little each week for this summer's vacation

Plan now for next July. You'll want a car for fishing, for trips to the country, for Sunday picnics. Small weekly payments out of earnings will soon give you delivery of a car. Under the Ford Weekly Purchase Plan you can start with practically any amount you want, and make deposits of any size you find most convenient. Almost before you realize it you will have the car paid for.

165,000 families have already purchased their Fords in this way. Ask the nearest Authorized Ford Dealer to explain how they did it and how easily you can do the same. See him today or write us direct.

Ford Motor Company, Dept. N-2, Detroit, Michigan

Mail me full particulars on your easy plan for owning an automobile.

Name _____
Street _____
Town _____ State _____

Ford Motor Company
Detroit



COUPE
\$520

Runabout - \$360
Touring Car - \$390
Tourer Sedan - \$420
Fordor Sedan - \$440
On open cars demountable rims and starter are \$95 extra
All Prices f. o. b. Detroit

MAKE SAFETY YOUR RESPONSIBILITY