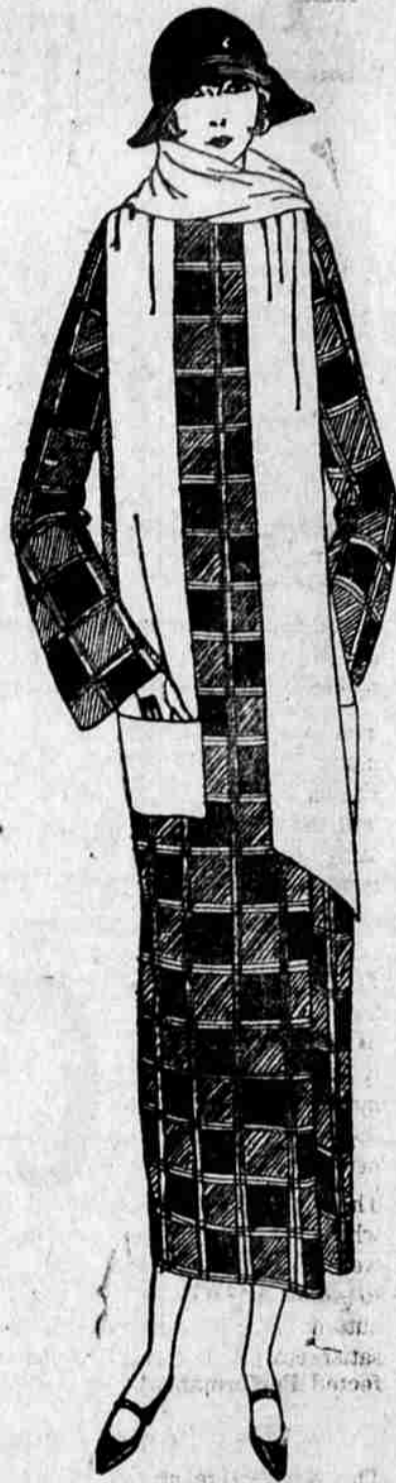


On display at the
Style Show
 Friday Night

A few of our popular
 Spring models

Not dozens but hundreds of new
 Spring models await your
 Approval



**ROAD WORK FOR
 DOUGLAS IS
 PROMISED**

ROSEBURG, Ore., March 17.—The state has approved market road allotments for Douglas county providing for the expenditure of approximately \$85,000. The money is to be distributed as follows: Roseburg-Oak Creek \$15,000; Mill Creek-Loon Lake road \$12,500; Edenbowr paving \$9,000; Elkton bridge \$15,000; Tiller-Milo road \$8,000; Tabor section Looking Glass road \$2,000; Round Prairie bridge \$3,000; Mt. Nebo road \$3,000. Special road taxes allotted to these projects bring the total estimated expenditures to more than \$100,000.

The county is planning on moving two spans of the old steel bridge at Winchester to Elkton, and one span of that bridge and one span of the Oakland highway bridge to Round Prairie. The Winchester bridge was replaced by the R. A. Booth bridge, one of the largest concrete bridges on the Pacific highway, and the Oakland bridge is now being replaced by a combination bridge and overhead. The county, however, cannot remove the Winchester structure until the highway is paved up to the new bridge, and has requested the state highway commission to have the approaches paved as soon as possible.

Markets

SAN FRANCISCO, March 17.—Apples, boxes, California Newtown, fancy 3 1/4 tier, \$2.50 to \$2.55; four tier, \$2.25 to \$2.45; Oregon and Washington Spitzenbergs, extra fancy, \$3.25 to \$3.40; fancy, \$2.75 to \$3; Wineaps, extra fancy, \$3 to \$3.50; fancy, \$2.75 to \$3; Arkan-

sas Blacks, fancy, \$2.75 to \$3; Newtowns, four tier, fancy, \$2.50 to \$2.75.

Portland, Ore., March 17.—Cattle, slow, looks steady; receipts, 3045, (420 through). Steers, good, \$8.25 to 8.75; medium, \$7.75 to 8.25; common, \$6.75 to 7.75; canner and cutter steers, \$5.50 to \$6.75; heifers, good (550 lbs. up), \$6.75 to \$7.25; common and medium, all weights, \$5.00 to \$6.75; cows, good, \$6.25 to \$7; common and medium, all weights, \$5.00 to \$6.75; cows, good, \$6.25 to \$7; common and medium, \$5 to \$6.25; canners and cutters, \$2 to \$5; bulls, good (beef yearlings excluded), \$4.50 to \$5.25; common to medium (canners and bologna), \$3 to \$4.50; calves, medium to choice (190 lbs. down), \$8.50 to \$12; cull and common (190 lbs. down), \$5 to \$6.50; medium to choice (190 to 260 lbs.), \$7.50 to \$11; medium to choice (260 lbs. up), \$6 to \$7.50; cull and common (190 lbs. up), \$4.50 to \$6.50.

Hogs open slow; steady to 25c higher; receipts, 2300 (89 direct or through). Heavyweight (250 to 350 lbs.), medium, good and choice, \$12.50 to \$13.75; medium weight (200 to 300 lbs.), medium, good and choice, \$13 to \$14; light weight (160 to 200 lbs.), common medium, good and choice, \$14 to \$14.25; light lights (130 to 160 lbs.) common, medium, good and choice, \$12.75 to \$13.75; packing hogs, smooth, \$11.50 to \$12.25; packing hogs, rough, \$11 to \$11.50; slaughter pigs (130 lbs. down), medium, good and choice, \$12 to \$13.50; feeder and stocker pigs, (70 to 130 lbs.), common, medium, good and choice, \$10 to \$11.

(Soft or oily hogs and roasting pigs excluded in above quotation.)

Sheep, nominally steady. Receipts, nearly all shorn lambs on contract. Receipts, 350. Lambs, light and handweight, medium to choice, \$14 to \$16; heavy weight, (92 lbs up) medium to prime, \$12 to \$14; all weights, cull and com-

mon, \$11 to \$14; yearling wethers, medium to prime, \$10 to \$13; wethers (2 years old and over), medium to prime, 9 to \$11.50; ewes, common to choice, \$8 to \$10; canner and cull, \$5 to \$8.

(Above quotations except lambs on shorn basis.)

Eggs—Steady. Current receipts, 2; pullets, 24 1/2 to 25c; firsts, 26 1/2 to 27c; henneries, 27 1/2 to 28c, delivered Portland.

Butter, steady. Extra cubes, city, 45c; standards, 43 1/4c; prime firsts, 41 1/4c; firsts, 39; undergrades, nominal; prints, 47c; cartons, 48c.

Butterfat, steady. Best churning cream, 45 to 46c net shippers' track in zone 1; 47c delivered Portland.

Poultry, steady. Heavy hens, 21 to 22c; light, 18 to 19c; springs, 22 to 23c; old roosters, 10c; ducks, White Pekin, 25c; live turkeys, 33c; geese, 18c.

Onions, steady, \$2.50 to \$2.75.

Potatoes, steady, \$1.50 to \$1.60.

Nuts, steady. Walnuts, No. 1, 23 to 33c; filberts, nominal; almonds, 20 to 26c; Brazil nuts, 12 1/2 to 15c; Oregon chestnuts, nominal.

Hops, steady. New clusters, 16 to 17c; fuggles, 15 to 18c; old crop nominal.

Cascara bark, quiet. New pel, 7 to 8c. Oregon grape root, 4c.

**REAL RECORDS ARE MADE
 BY OREGON CLUB MEMBERS**

More Oregon girls and boys completed their club projects in 1924 than ever before, reports H. C. Seymour, state club leader of the college extension service. Other records were in the number of 100 per cent clubs, in amount of money won in scholarships and prizes, and in larger attendance at the club summer sessions at the state college.

Oregon led the 11 western states in club enrollment with 6047. Washington was second with 4553. Oregon club money earned in the projects for the year was \$49,-

Captains Crew



This is a closeup view of Captain MacDonald of the University of Pennsylvania varsity crew. He hopes to lead the Red and Blue shell to victory this season.

\$31.19. Club winnings in scholarships and prizes were \$4309.25.

Credit for the good showing is given by the extension authorities to local leaders, schools, newspapers and farm journals, bankers, and business men, chambers of commerce and fair associations. Without the volunteer services of the local leaders many club members who begin their work enthusiastically drop out before finishing. Other facts of interest are noted as follows:

Number of clubs, 725; number enrolled and submitting first report, 6047; number completing project, 4572; percentage completing projects, 75.6; number 100 per cent clubs, 373; number making exhibits, 4587; number attending college summer session, 397.

Herald "Class" Ads Pay

**SMALL HOMES STILL
 RISING RAPIDLY IN
 INDUSTRIAL SECTION**

Further evidence of unprecedented building activity in Industrial addition was manifest last night with the granting of thirteen building permits, six of which were for small homes in Industrial addition. The permits represented a total investment of \$14,955.

Building permits granted follow: Mrs. C. S. Jacobs, a dwelling in Industrial addition to cost \$2090; R. C. Chapman, a tent house in Industrial addition to cost \$80; Thomas Laughhead, a dwelling in Fairview Second addition to cost \$2000; Standard Oil company, a rest room on Sixth and Klamath avenue to cost \$1000; Dan Walters, a restaurant in Klamath addition to cost \$475; E. Dietsche, a garage in First addition to cost \$500; B. A.

Dohlein, a lunch counter in Railroad second addition to cost \$150; James Hill, three dwellings in Industrial addition to cost \$600; C. W. Howry, dwelling in Industrial addition to cost \$150; John F. Goldsworthy, a dwelling in First addition to cost \$3000; George L. Humphrey, a dwelling on Pine street to cost \$4000.

The Italian government is planning to have 3177 miles of railways, about 32 per cent of the state railway system, operated by electricity by the end of 1926.

A small reflecting telescope of considerable power that can be permanently mounted out of doors on an ornamental stand has been designed for amateur astronomers. The Japanese city of Kobe is to have an exchange through which all its telephone subscribers can communicate with ships in the harbor having radio equipment.

A patron's shoe is held firmly on the foot rest of a recently patented stand for bootblacks by suction, the pedestal of the rest being a hand operated air pump.

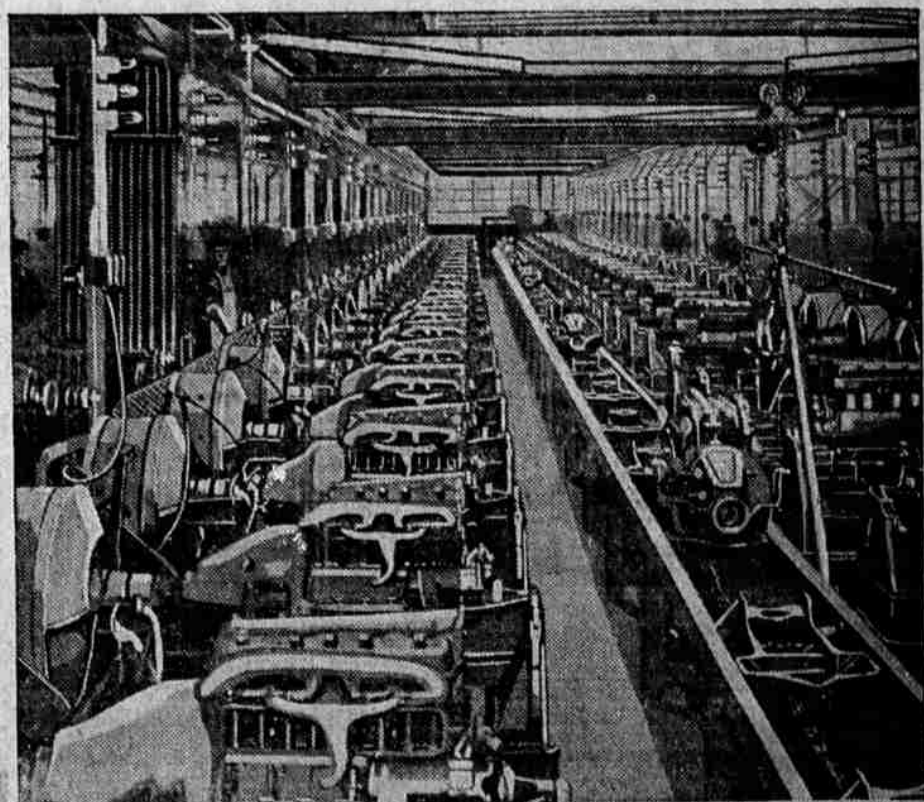
An incandescent lamp invented by an Italian does not require current from outside sources and operates at a much lower temperature than ordinary filament lamps.

An inventor has designed a cooking range enclosed in a ventilated cabinet to be built into a wall or window of a house to keep the odors of cooking out of doors.

As the arms of a lawn sprinkler invented by a Californian revolve they operate gearing to cause the device to move over the ground on wheels, dragging hose with it.

They are wearing socks of many colors. Some day maybe we can wear socks of different colors.

ENGE TESTING PLANT OF FORD MOTOR CO.



Here is where Ford engines are tested in the big new manufacturing building at the Ford Motor Company's River Rouge plant. All Ford engines are now being built at River Rouge and from the motor assembly line so immediately into the test department.