

# Do You Need Money To Build That Home?

If you own your lot, and have some money, we can loan you half the value of building and lot combined, payable like rent. Monthly payments. Make your arrangements now, before the spring rush begins, so that your dream home may be a reality before snow flies again.

There is no quicker way of making money than by real estate investment in a growing town. You are in the growing town—the rest is up to you.

## Momyer & Momyer

Insurance Real Estate Building and Loan  
Hopka Building Phone 366

# Lots, Houses, Ranches, Business Property I Can Get Them for You

Irrigated or dry ranches, Klamath Falls lots in any section of the city, or city business and residence property. My listings cover all sections of Klamath county. If you plan to buy a residence or a business location—see me.

Day or evening, phone 726-W and I'll be glad to call.

## R. H. Maley

REAL ESTATE  
703 North Ninth

# ECONOMY

Appearance, Durability and Economy of Construction Require Detail Working Plans and Specifications

You may think complete plans cost a lot of money, but they don't if you use

## H. R. Perrin's

SMALL HOUSE

Standardized Plan Service

"Come in and Investigate"

209 Hopka Building.

Phone 250-J

# CINDERS

Cinders are economical and practical for roads and driveways as they pack and bind, making a very smooth pavement-like surface

## A. F. Graham

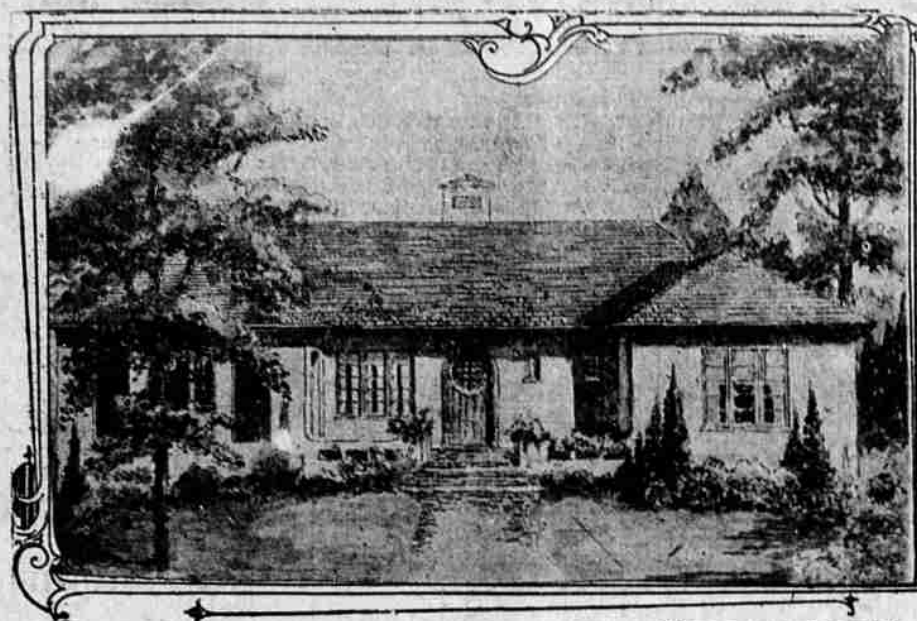
GENERAL CONTRACTOR  
Office Rooms—201-202 Winters Bldg.  
PHONE 526

Heretofore the demand for cinders has been greater than the supply. We have added new and improved equipment which will enable us to supply all needs.

Orders accepted for immediate delivery

# CINDERS

# House Plans for Home Planners



Concrete Bungalow of Original Lines and Convenient Floor Plan

## THE WEE HOUSE OF YOUR DREAMS

This little house is a gay affair, just large enough to hold the brand-new family of two, with an extra bedroom for an occasional guest.

Picture it in deep cream stucco (on metal lath), with a bright green shingle roof—or the beautiful tones of the multicolored shingles if one prefers a less vivid effect—with a warm chocolate window trim. In the flower boxes on the terrace bloom scarlet geraniums, white candytuft and long loops of dark polished ivy, and backed against the house grow vari-colored tulips in Spring, hollyhocks, poppies and nasturtiums in Summer, asters in the Fall and the green of shrubbery all the year round.

There is a wonderful porch which, glassed-in, turns into a lovely sun-parlor, then a spacious living room with the fireplace between the charming groups of windows. Another battery of windows looks out onto the garden—which must, without question, be an important part of a home of this type—and across the living room another group of windows gives us the view of the front of the house.

Across the foyer hall we find the bedrooms and the bath, with the many closets which are so important to any home. Nothing can be more important than quiet and privacy for the bedchambers. It is not always easy to get this in limited space—but notice here the little hall separating the living room from the sleeping quarters. This is a pleasing feature to many people—by its aid the sick may be taken care of without disturbing the routine of the family life; the

midnight lunch may be gotten from the pantry by the old or young folks, and the entertaining still go on in the living room; dinner may be served in the dining room and the card game go on unnoticed by those who are sleeping in the other part of the house.

The dining room leads from the living room in such a way that it shares in the glow from the living room fire—thus, while living and dining rooms are not thrown together, there is that effect, and advantage—clear away the rugs and the music has but to start when you find yourself in a ballroom of quite important size!

The garden will be enjoyed by dinner guests during the whole meal, for the group of four great windows allows us to look directly out at it. So the living room is not the only view to our garden, and this gives a double purpose for having it very fine.

The pantry between the kitchen and dining room is most convenient. If one desired, doors might be made to open into the dining room from the dresser in the pantry, which will hold all the dishes used in the dining room, so that, the table could be set with no extra steps. Salads as well as desserts may be made in this pantry and served from here. There is a sink for washing vegetables and dishes.

There are closets and dressers for any purpose necessary in the kitchen, and one will never be at a loss where to put kitchen utensils, as there is room galore in this kitchen. The ice box may be fed from the porch, thus avoiding the dirt which this daily necessity brings if the ice has to be brought into the

# Beautiful Back Yards

The simplest design for ornamental back-yard planting on a small place consists of a belt of shrubbery about the boundaries with perennials bulbs and annuals in front of them. This is the first step and on that may be easily accomplished in one season if the task of laying out a complete garden seems too heavy.

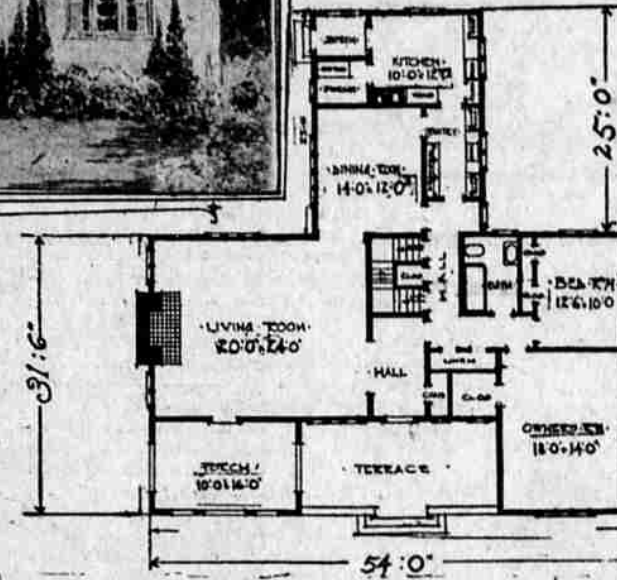
For the first season the flowers should consist of annuals to a great extent, with the perennials growing from seed to be set in place late in the season to come into bloom next year. Annuals may be set among the newer planted shrubs the first year, for if properly spaced to give a chance to develop properly, there will be spaces between the bushes which will look very wide and bare for a season or two. These may be filled with shallow-rooting annuals which will in no way interfere with the deeper-rooting shrubbery.

It is an easy matter to select annuals of the color or colors you prefer for this planting. There is also a great variety in height to ar-

range a pleasing floral pattern. Tall-growing annuals to set toward the back of the border, but not close enough to smother the young bushes are annual sunflowers, cosmos, spider plant or cleome, the flowering tobacco, nicotiana, the tall African marigolds, colossal zinnias, with possibly a plant or two of castor beans to tower above the shrubbery and give accent points to the planting.

Toward the front of the border, lower-growing annuals such as asters, stocks, calveas, petunias, dwarf zinnias, pinks, nasturtiums and scores of others may be sown. A garden of the various annual poppies alone will make a gorgeous display.

These annuals are best planted in colonies of a single color for pleasing effects. The gardener may exercise his ingenuity and artist's eye in arranging his color plans. With the outer border completed, it will be much easier matter to develop a scheme of beds within the enclosure surrounded by the shrubs.



kitchen. Work must be simplified in the house that has no room for a resident maid, and this kitchen has been planned in the most efficient way. There is wonderful light; there is the cross-ventilation which is so necessary, and the sink and dresser are placed in proper relationship to cause the fewest steps for the worker.

This house is 54 feet wide and 31 1/2 feet deep. But it would be advisable if possible to build it on a wooded lot of mediumly large dimensions, for it lends itself to the natural landscaping such a lot would afford. While this house is cozy and homelike, yet there is a bit of dignity about it which could be greatly intensified if aided by

the beauty of a splendid lawn on all sides.

Study the plan of this little house seriously, each room by itself and then in relation to the whole. Perhaps you will find if your ideal of a home. And if not, it will certainly furnish many valuable suggestions for that ideal home you are going to build—now or a little later.

Detailed information as to building costs can be supplied by any local builder. For further information as to procuring the building plans for this House Design No. 78, send a stamped envelope to the House Plans Editor, care of this paper.

NEXT WEEK—"A Wide Looking House for the Narrow Lot"

# OREGON HOPES TO WIN TONIGHT

## University Hoopsters Will Play O. A. C. Second Game of Series

EUGENE, Ore., March 7.—Grimly determined basketball players from the University of Oregon, accompanied by their coach, "Billy" Reinhart, will leave Eugene at 4:30 o'clock this afternoon for Corvallis, where they will meet the Oregon Agricultural college quintet at 7:30 o'clock tonight in the second of a three-game series for the championship of the northern section of the Pacific Coast Conference.

The Aggie team won the first game of the series here Thursday afternoon 15 to 12, and another victory for them tonight would give them the championship. A victory for Oregon on the other hand, would throw the series into a tie, and would necessitate the playing of the third game Monday, in Salem on the Willamette University court.

## More Gossip



Anne Luther, prominent screen actress, who became more prominent in her suit against Jack White for \$100,000 for breach of contract, has started more gossip. She is seen nightly with Frank Mayer, actor.

The largest bell in the world that can be rung has been cast in Germany for the tower of the Cologne cathedral.

# For a Better Town

THESE pages are prepared with the idea of aiding Klamath Falls home owners in their efforts to make this town more beautiful—A better place to live.

DUE to the cooperation of the advertisers on these two pages, we are now enabled to offer the first of a series on home gardening and flower growing.

FROM week to week other articles will be added, with the idea of making this section a real aid to community betterment.

The Evening Herald