

PUSH — PULL — BOOST — for YOUR COMMUNITY

Prosperity for Klamath County Means Prosperity for You!

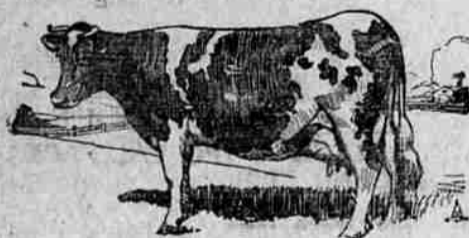
And you can share in that prosperity if you will but make up your mind to do so. The opportunity is here now! Grasp it! An investment in the Klamath Dairy Cow and Hog Company makes you a partner in the greatest development the county has ever known

Remember that your dollars wisely invested today will keep working for you twenty-four hours a day, while the dollars spent are gone forever. A few years from now is too late---the time to act is NOW when the golden opportunity is at hand

THE DAIRYING INDUSTRY

Klamath County is but in its infancy. The county at large can easily care for two thousand more good dairy cows, and can utilize their butter fat output in making cheese that will not only equal but will surpass cheese made in other parts of the country.

The Klamath Dairy Cow and Hog Company has already adopted the name "Klamath Maid Cheese" and will advertise it all over the west coast. The company has under construction a modern cheese factory at Bonanza, and will establish more factories at different points in the county.



Think of the record that Tillamook cheese has made, and you can easily realize that with even better conditions here in the way of feed, water, etc., for dairy herds it is not going to be a hard job to put "Klamath Maid" cheese in the same class.

Another thing to remember is that the company has already arranged for eighty pure bred Jersey cows, and is bringing them up from California. This is but the first of a number of herds that are being arranged for.



Realize These Facts: KLAMATH COUNTY

is in an exceptionally enviable position this year and will be for years to come, in the matter of caring for dairy herds. Northern California has already petitioned the governor of the state to allow California herds to be brought in as fires and other hazards have made it impossible to keep them in California.

PLENTY FEED

is to be had in Klamath County, as we have not had any of the drought that bothered California this spring. It is estimated that the present crops of alfalfa in the county would easily care for two to three thousand more dairy cows without stinting those we already have.

PLENTY OF WATER

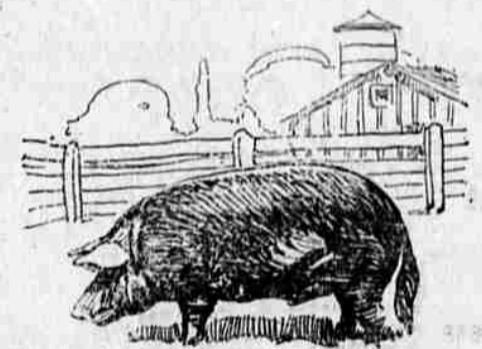
is at hand in Klamath county—in fact, there is so much water that approximately 25% of it is going to waste. Help us to utilize it and turn it into dollars via the channel of dairy herds, butter and cheese.

THE HOG INDUSTRY

is one that is absolutely certain of definite profits. This has been demonstrated to such a point that it is no longer a matter of question.

Our hog feeding and killing plant, located at Bonanza, is practically completed, and we have arranged for the importation of pure bred brood sows which will be installed within the next two weeks.

If you could but see the modern methods we have adopted in our fattening pens there would be no question in your mind as to the advisability of par-



ticipating with us in the profits that are sure to accrue. We are not experimenting—we have adopted methods that have been tested and proven.

Don't delay any longer. Today you can buy Klamath Dairy Cow and Hog Company stock at \$100 a share, (terms can be arranged if you wish) while a year from now it is hard to estimate the value of the stock. We do not consider the investment a gamble; it is simply taking advantage of an opportunity that is apparent to everyone.

A phone call or postal card will bring a representative to go into details with you.

The Klamath Dairy Cow and Hog Company

205 ODD FELLOWS BUILDING

PHONE 771

The time to act is TODAY. Tomorrow is one day that never arrives.