

THE HERALD'S AUTOMOBILE DEPT.

DODGE POLICY IS COMMENDED

According to H. F. Wakefield, Dodge Brothers dealer here, the public appreciates Dodge Brothers policy of making constant improvements in their motor cars instead of changing models every year.

"Coming just at this time," said Mr. Wakefield, "when many manufacturers are preparing to issue new models, in keeping with their annual custom, this advertisement is having a striking effect. It serves as a wholesome reassurance to prospective buyers. They dislike the idea of buying a car today and finding a month or so later that it is an obsolete model. And it is only natural that they should. The depreciation loss is out of proportion for a few months' use. Moreover, most people like to be up-to-date in their motor equipment and if they wish to follow their desire in this respect they must accept this sharp depreciation loss.

"Dodge Brothers Motor Car owners who buy new cars every year—and there are many of them—have a big advantage here. A one-year-old Dodge Brothers car is modern in appearance and mechanical design. That fact is conceded by everyone. Equally important is its resale value, however, is the fact that it is substantially the same car that Dodge Brothers will manufacture a year later. In other words, there is no danger that this one-year-old car will suffer an undue depreciation loss simply because an entirely different model is about to make its appearance. We charge off only for the normal rate of depreciation for one year. And the used car buyer in turn appreciates the fact that the price represents full value and that he can buy the car with full assurance of many years of satisfactory service."

"Dodge Brothers Motor Car owners who buy new cars every year—and there are many of them—have a big advantage here. A one-year-old Dodge Brothers car is modern in appearance and mechanical design. That fact is conceded by everyone. Equally important is its resale value, however, is the fact that it is substantially the same car that Dodge Brothers will manufacture a year later. In other words, there is no danger that this one-year-old car will suffer an undue depreciation loss simply because an entirely different model is about to make its appearance. We charge off only for the normal rate of depreciation for one year. And the used car buyer in turn appreciates the fact that the price represents full value and that he can buy the car with full assurance of many years of satisfactory service."

Dangerous Paths in White Pelican Drama

The management of the White Pelican theater announces that Nora Gerber, popular and well known motion picture star, is coming to that theater on Wednesday and Thursday for a two days' stay in her latest starring vehicle, "Dangerous Paths."

"Dangerous Paths" is a high class society drama with a modern moral woven into a well knitted story that should react pleasingly upon all of the local film fans who see it. While the theme—that of a young girl forced to leave her quiet village home and seek a livelihood in the city where she encounters dangers of all sorts, is not a new one, it has been so differently and refreshingly handled in this production that it practically makes brand new entertainment.

The old village store which sold everything in the world has moved to town and calls itself a drug store.

Astronomers claim it is always cool on the moon. Now that doesn't beat the world.

REFLECTIONS OF VET REPAIRMAN

By F. C. R.

The loudest horn doesn't always proclaim the best car. The same applies to people.

POINTS TO REMEMBER

Setting the emergency brake helps to get you out of the mud. This acts as a powerful drag on the wheels which, balanced against the full power of the engine, causes them to pull mightily but so slowly that they do not spin and therefore are less inclined to slip.

A gravel or loose stone road is not an aid to quick stopping. A greater margin of safety should always be allowed on such a road. This means driving slower if unfamiliar with the territory, and keeping a safe distance behind the car ahead.

The shock may be transmitted to people sitting in the car if a mechanic in testing the plugs happens to make a contact with one hand while touching metal. The high tension shock may be harmful to an elderly person with a weak heart.

"WATCH YOURSELF"

An enterprising township has erected a pertinent sign at a dangerous point of the highway calling attention to a mirror in which the driver sees himself as he approaches. The sign says, "Watch yourself," while the mirror is said to be a surprise to many drivers who imagine they look trustworthy when at the wheel.

WORD OF WARNING

With so many types of tires in vogue, oversize, extra oversize, giant cords, fabric, semi-balloon, oversize balloon type and ordinary cords, the motorist must be careful to see that his front tires are always mates. It makes very little difference about the rear tires, though if balloon type tires are used both rear wheels should be equipped so that the car will not look ungainly. Freedom from front wheel shimmy, or warbling, has much to do with using front tires of equal weight, cross-section and diameter.

SALEM, Ore., July 7.—Reports received here today from Silverton indicated that Governor Pierce will be requested to conduct an investigation of the alleged practice of George L. Cleaver, state prohibition agent, in allowing his operatives to bait seven young men of the Silverton vicinity and later arrest them on charges of having liquor in their possession.

It was reported here that a man giving his name as John Knowlton entered a pool hall conducted at Silverton a few days ago and struck up an acquaintance with a number of young men who had assembled there. Among Knowlton's new-made acquaintances were Joe Ludolitzke, William Morgan, James Hollingsworth, Emil Lichty and Oscar Johnson.

A calamity is when a lazy man gets stung in the seat of the pants so he can't sit down.

FORD TELLS OF PARTS TONNAGE

Converting 115 tons of steel wire into more than 7,000,000 bolts and screws a day is the task accomplished in one department at the Highland Park plant of the Ford Motor company.

Indeed, the production schedule calls for 7,000,000 bolts and screws daily and the department itself boasts a record of \$500,000.

To the average person the name of this interesting manufacturing unit of the great factory is a misnomer. It is called the Cold Heading Department from the fact that in the manufacturing process of making bolts and screws the principal operations are cutting bolt and screw parts from steel wire and putting so-called "heads" on them without heating.

Machines employed in doing this work are almost uncanny in their speed and accuracy.

Operations are so rapid the human eye can not catch them. Steel wire is fed in, clipped the proper length, cut piece automatically shifted to a die where, under pressure, it is shortened, part of the metal gathering at one end. Another automatic change, the head is formed and flip, an ejector drops the complete bolt into a container. It all happens in the fraction of a second, for these machines have a capacity of 500 bolts a minute and exert a pressure varying from 8,000 to 150,000 pounds, according to the size of the bolt or screw part.

FUND IS PROVIDED TO PAY CATTLEMEN

SACRAMENTO, Calif., July 8.—California has contracted to pay indemnities to owners of livestock slaughtered in the campaign to eradicate the foot and mouth disease, approximately \$1,920,000, according to figures released today by H. W. Lavers, chief accountant of the state department of agriculture. Approximately one fourth of this amount has actually been paid to the livestock men.

According to Lavers' statement, the total appraised value of the livestock slaughtered in California to date is \$3,897,911.27, representing a sum of money of which half will be paid by state and half by the federal government.

Few things make a woman happier than she can get her husband to waste \$10 worth of his time doing 75 cents' worth of work around the house.

If all the June brides put their first biscuits together we could build some excellent roads.

DURANT OUTPUT HOLDS STEADY

OAKLAND, Calif., July 8.—That little, if any, further enlargement of production is expected at the Durant plant at Lansing, Michigan, is the word received here by the Durant Corporation. This plant is now working five eight-hour days and one five-hour day a week, and is producing 60 per cent of the peak output, according to V. P. Alger of the Lansing organization.

He also reports that surplus cars in the hands of dealers are now greatly reduced and the June schedule calls for 3500 cars.

FIRE PROTECTION SYSTEM IS BEING PLACED IN PLANT

A modern automatic springling system is being installed in the buildings of the Ewauna Box factory which, according to Fire Chief Keith Ambrose, will considerably lessen chances of a serious fire.

The system includes placing of sprinklers in places that will cause every inch of wood inside the company buildings to be within range of the water that would be turned loose in time of emergency.

On each sprinkler is a fusible link which is extremely sensitive to heat. At a certain temperature, the link, which holds back the water nozzles, and the sprinkling automatically commences. In this manner the buildings would be protected in case fire broke out, when the mill was vacated.

Also the Lumber company is installing a comprehensive system of fire prevention outside the buildings by erecting 47 additional hydrants which with sufficient hose would protect every foot of the lumber grounds.

In addition to the protection from fire the prevention system gives the company a better insurance rate.

MAXWELL CAR OUTPUT GROWS

DETROIT, July 8.—Production of the Maxwell-Chrysler Chalmers organization for the first five months of 1924 was 15.4 per cent higher than for the corresponding period in 1923, it was learned here yesterday.

Volume of business in dollars for the same period was 18 per cent higher than for the same months last year.

Through the demand for the Chrysler Six has contributed considerably to this material increase. Maxwell production also showed a substantial gain over the same period last year. Maxwell, of course, has contributed the bulk of the business both years.

Closed car output for both the Maxwell and Chrysler divisions is running high. During the first four months of 1924, Maxwell closed car production averaged 54.4 per cent,

compared with 24.5 per cent for the similar period a year ago and 37.5 per cent for the entire 1923 year. Chrysler output today has averaged 47.5 per cent closed.

APPLYING THE BRAKES

When the brakes are locked so as to slide the wheels the speedometer should drop back to zero, if the car is not so old a model as to have the speedometer drive taken from the right front wheels. Some drivers do not seem to realize when they have applied the brakes so vigorously as to lock the wheels.

Walter P. Chrysler Says—

There is little or nothing in the ordinary four by which to measure Maxwell riding and driving results of today.

Vibration literally ceases to exist, so far as those in the car are concerned. The car rides with the ease of one twice as heavy.

There is no four in America today at anything like its price to equal the good Maxwell—and you can find that out for yourself in 30 minutes by calling on the nearest Maxwell dealer.

W.P. Chrysler
President and Chairman of the Board
Maxwell Motor Sales Corporation

HOWIE GARAGE
12th and Main St. Phone 379

You'll Appreciate It!



Follow to where the Arrow Points!

DURANT

Four Cylinder

Balloon Tires
Four-wheel Brakes
Disc Wheels
New Motor
\$1115 delivered here

Imperial Garage

Third and Main St. Phone 103



In the homes—on the streets—in stores and offices everybody is talking about the new Buick Six—the Six that sets a new standard of quality and price. Thousands of people are streaming into Buick salesrooms to see it.

See it for Yourself

H. E. HAUGER
BUICK GARAGE
Opp. White Pelican Hotel

Conserve Your Energy in Summer

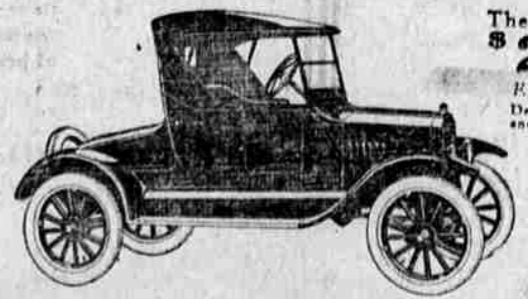
You can, literally, get "recreation"—be "made over" again, when your physical self is rested, your energy and your strength conserved by the use of this Ford Runabout.

Simplicity and good taste are embodied in the lines and appointments of this popular car. Uninterrupted use is insured by nation-wide, "around-the-corner" Ford service. Better get your order in now!

Ford Motor Company
Detroit, Michigan

Touring Car \$295 Coupe \$325 Tudor Sedan \$390 Fordor Sedan \$485
All prices f.o.b. Detroit

BALSIGER MOTOR CO.
Eighth and Klamath Avenue.



The Runabout
\$265
R.O.B. Detroit
Demonstrable Runs
and Starts 85 cents



THE UNIVERSAL CAR

You can buy any model by making a small down-payment and arranging easy terms for the balance. Or you can buy on the Ford Weekly Purchase Plan. The Ford dealer in your neighborhood will gladly explain both plans in detail.