



# THE HERALD'S AUTOMOBILE DEPT.



## 'GMC' DEALER IS HOST AT PLANT

After signing up a new member of the GMC family it was my good fortune to make a trip through the GMC plants at Pontiac and Detroit, Michigan.

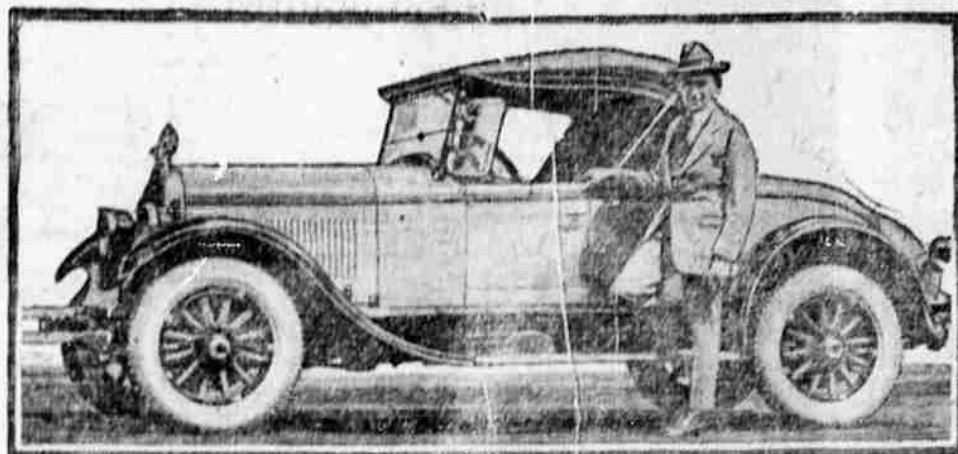
I had been connected with the motor truck business for a number of years and while I did not figure myself to be biased, I still viewed my proposed trip to our factories a bit skeptically. In the past I had visited other motor truck manufacturing concerns and frankly I did not expect that my trip to GMC would be anything out of the ordinary.

An honest confession is good for the soul and I'm confessing that my first trip to Pontiac was a revelation to me—it opened my eyes to the new order of truck building. To see a motor truck, a piece of work machinery, surrounded in every step of its manufacture with constant care, made me feel that if I could get this story over to my Youngstown prospects they would be considerably more than 50 per cent sold. I venture to say that no real truck man can go through our factories without gaining a new courage, a new impulse and a new determination to make good. A trip such as I had should make it possible to picture to those in the territory just what General Motors is doing to produce a truck to which the slogan "Seven Steps Ahead" so rightfully belongs.

### Brake Test Planned

Portland contemplates stopping motorists and testing brakes, according to Frank Ervin of the police traffic bureau. If one cannot stop in 25 miles an hour to a dead stop, bring his or her car down from 37 feet, there will be danger of arrest, it is said.

## BOYER CHOOSES CHRYSLER SIX



Joe Boyer, winner this year of the greatest speed and endurance event in Motordom—the Indianapolis 200-mile Six Roadster for his personal use. He drove it from Detroit to Indianapolis before the race.

### REFLECTIONS OF VET REPAIRMAN

By F. C. R.

#### REFLECTIONS OF VET.

Mechanics are said to hate to knock each other's work. It is hardly necessary as long as car owners can attend to it so satisfactorily.

#### DON'T FORGET THAT—

A tappet with too little clearance will mean a burned valve. When a valve does not seat properly the burning gas vapor strikes both sides of it, and it cannot long endure this without damage. The grade of a hill at a turn is

less if you will drive nearer the center of the road. How near to drive depends, of course upon the amount of traffic on the road and whether you can see a safe distance ahead.

#### WORTH REMEMBERING

The easiest way to remedy the nuisance of having a broken cross chain slap against a fender is to tie the broken ends together with a piece of cord, joining them through the spokes of the wheel. The chances are that a special link can be inserted in the chain to repair it when you return to the garage; if you remove the broken pieces of the line from the chain proper you have to re-attach them again.

Just because the car is going to the paint shop is no excuse for not spreading the leaves of the springs and graphiting them. The chassis of the car will always look well when it returns from the paint shop, but consider this as pure camouflage unless the important work of greasing has been done first.

Tightening the fan belt too much invariably stretches it, rendering your efforts useless.

#### TIME TO STOP CAR

If the engine of the new car suddenly starts a squeaking noise that grows louder and louder until shows signs of developing into a genuine screech, by all means stop. Don't force the engine along in the belief that the noise will "wear away." Stop, let the engine cool, put two quarts of oil in the gas tank and proceed slowly. Chances are that a tight piston is starting to score its cylinder.

With airplane traffic you may soon be able to cross the Atlantic as safely and as quickly as you cross the street.

## NEW MOTOR FOR DURANT AUTOS

The Durant Motor Company of California announced yesterday that Durant cars will now come equipped with a new motor. This new motor, according to factory officials, is without a doubt one of the four cylinder engines ever offered to the motoring public.

The smoothness and horsepower have been increased by using round split skirt Lynite piston and a honed block. These new pistons are one-half inch longer than the old pistons and are relieved around the pin boss so that they will not expand and stick.

One of the outstanding features of the new motor is the crankshaft which has been made heavier and stiffer, reducing vibration to a minimum.

### TIME SCHEDULE IS CHANGED FOR ROAD

Reports have been received here that the Pacific highway under improvement north of Redding is now open from 7 a. m. to 10 p. m. The former time was from 11 a. m. to 7 p. m. About a mile of new pavement nine miles north of Redding is now open to traffic. A ten-mile stretch is now under improvement and other sections will soon be opened and the present detours eliminated, is the report of the highway officials.

## DODGE BROTHERS SPECIAL MOTOR CARS

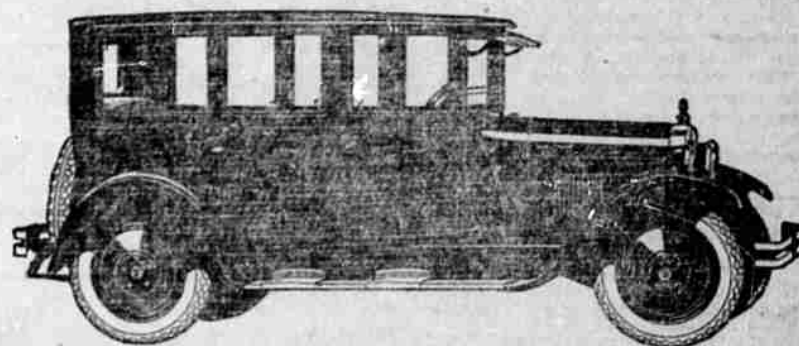
These cars represent Dodge Brothers finest achievement in the creation of genuine motor car beauty.

Identical with the standard product in fundamental design, they are individualized by extensive extra equipment.

They are available in four popular types: The Touring Car, Roadster, Type-A Sedan and 4-Passenger Coupe.

## H. S. WAKEFIELD

422 Klamath Avenue



Advertise in the Evening Herald; it pays.

You can save

**\$420**

on A GRAY COUPE Like New

**HOWIE GARAGE**

12th and Main

## Lowest Priced Closed Car

With Doors Front and Rear

ONLY \$160 more than the Overland touring car—the Overland Coupe-Sedan—the world's foremost closed car value. All the unique exclusive features of a coupe and a sedan in one!

Removable rear seat gives big loading space for anything and everything. Seats adjust backward and forward. Seats also make into a full-size bed in the car—great for camping. Easy riding patented springs—big power—reliability—record-breaking economy. Come in and see it.

Overland is the only touring car with sliding gear transmission, priced under \$500, f. o. b. Toledo.



Dunham Auto Co.

403 S. 6th Street.

## Hupmobile

Countershaft with Roller Bearings: These bearings are the high-duty roller type, made of chrome nickel steel—the costly, long-wearing metal in all roller, taper and spherical bearings. Common practice uses plain bushings at this point.



## Worth Money to You

Facts That May Save You Hundreds Of Dollars On Your Next Car

Here is a transmission countershaft—mounted in high duty roller bearings. No repair expense concealed in that quality Hupmobile construction.

Here is another countershaft. It is mounted in a brass bushing. Eventually it will wear; the bushing will be replaced; the repair bill—the position is difficult of access—will be called exorbitant.

There you have invisible value contrasted with invisible costs

The Hupmobile Parts

Display—on view at our salesroom—enables you to draw these money-saving comparisons, right down the line.

Possessed of these facts, your course is clear.

If any car—no matter what its principle of design may be—no matter what its price—can show parts and processes equal to the Hupmobile and match it in performance, reliability, durability and economy—then, and then only, are you warranted in investing money in the other car.

Imperial Garage  
Klamath Falls, Ore.



## General Motors Trucks

Owners know why G. M. C's. excel - - - they've had experience

They know that each of the eight speeds ahead and two speeds reverse have a significance to them in savings in their pocket-book. They know that with years of experience in building motor trucks puts G. M. C's beyond the stage of experimentation.

They know that actual performance is the only true criterion and when it comes to performance G. M. C. is without an equal. They know that with G. M. C., low cost of maintenance is a fact, not merely a claim.

They know that quality, as it is built into G. M. C. Trucks, is genuine and permanent.

**REX RENNER**

236 Main Street