

**MIGRATORY BIRDS GET PROTECTION IN WINTER MONTHS**

**Game in Territory From Mouth of Mississippi To Texas To Be Safeguarded**

NEW ORLEANS, July 29.—Reinforced by a staff of seven wardens in his own employ by the moral support of the state of Louisiana, to which he only recently conveyed the Rockefeller, Sage and Rainey-Mellhenny game preserves, and by good sportsmen everywhere, Edward Avery Mellhenny is now undertaking a new stewardship in the interest of wild life protection. Already an informal advisor and overseer for the state in connection with more than 500 square miles of territory, Mellhenny has taken control of some 100,000 acres of land in the heart of the gulf coast game regions.

Mellhenny has for some time owned 78,000 acres of ground, and only a few days ago obtained 22,000 acres more in the wild fowl feeding grounds. This land constitutes practically all that is left of the feeding grounds except the territory in the game preserves. Mellhenny, after several months required to clear up title to all the ground in question, has just announced his purchase.

The significance of Mellhenny's announcement is in the fact that with his acquisition of the ground the millions of duck, geese and other game birds which come from the north to feed here in winter, are assured of permanent feeding grounds and permanent protection against unscrupulous hunters and commercial exploitation. Already Mellhenny is being congratulated by sportsmen for his farsighted program.

Mellhenny has announced no plans with regard to the tract he has acquired other than to say that game will be protected and safeguarded. With this 100,000 acres in hands friendly to wild life, game will be safeguarded in all the territory from the mouth of the Mississippi to Texas.

Seventy-five miles of coast line along the gulf will be protected, and the total area inland is approximately 700 square miles. This territory includes the Rockefeller foundation of 88,000 acres; the Rainey-Mellhenny and Louisiana state wild life refuges of 62,000 acres; the Sage foundation, of 78,000 acres, and the property now controlled by Mellhenny. The gulf of Mexico is the south line, and the White lake and the Louisiana rice fields form the northern boundary. Needless to say this territory is a paradise for birds coming from as far north as the Arctic Circle to feed for the winter—as well as for hunters, if they could get into the grounds and run wild.

Sportsmen generally are familiar with Mellhenny's work in the direction of game conservation. Beginning several years ago he devoted much time and money to acquiring ground for the game preserves. Besides giving land of his own, he obtained grants from others. He now has on his own territory a squad of wardens who patrol the district and see that the laws are obeyed. They are safeguarding not only the game bird feeding grounds, but the haunts of the innumerable deer and bear, to say nothing of the otter, mink, muskrats, squirrels, rabbits

**The Sheikess of Paris**



You've heard about these sheik guys; well, take a looksee at this sheikess. At any rate, that's what they call her in Paris because of her eyes and her heart-breaking ways. She's Lily Janiya.

and other small game.

Like most of the ground in this region, Mellhenny's 100,000 acre tract is of extremely fertile soil and suited to many profitable crops. But he is developing it not with agriculture in mind. Many of these have been and all will be, sown with such game bird delicacies as banana water lilies, wild celery, coontails, etc.

to attract the fowl.

"The reason why the wonderful game supply of forty years ago has disappeared," said Mellhenny, "is that the great states such as Iowa, Illinois, Indiana and Ohio, across the heart of the continent, have been cultivated to the point where migratory birds can find no place to alight and feed. If we do not develop a

**SEEKS NEW WAY TO MANUFACTURE IRON**

WASHINGTON, July 30.—The United States government is now making iron, but only as an experiment and not for the commercial field. Its blast furnace is located at Minneapolis and is operated, as a laboratory by the bureau of mines in co-operation with the University of Minnesota. After four years of experimentation to develop it, the furnace recently produced several tons of gray iron and spiegeleisen.

This type of experiment is declared unique in the field of industrial research, as blast furnaces are not included usually in laboratory equipment. But with the demonstration showing every phase of the operation of iron making under complete technical control, it is believed the investigators at the Minneapolis station are in a position to undertake the study of various problems, the solution of which should be of great practical value to blast furnaces in Louisiana, they will pass from Canada and the Arctic, into South America, and become only a memory in the United States."

fresh from the factory  
**FRESH Tuxedo TOBACCO**  
now 15¢  
ROLL YOUR OWN WITH  
The Le Croy Papers Attached

nance operators. The furnace was operated first as a slagging-type gas producer until it had reached a steady state thermally and chemically. Iron ore without the addition of a flux then was introduced, and its descent in the furnace was followed by means of gas samples taken at various stations. When the effect of this charge had been dissipated, more ore was charged without limestone, and other sets of samples were

taken. The purpose is to obtain a comparison of the gas composition at various planes of the furnace. Various sizes of ore also were used. The reduction of the ore at the stockline was found to be greater with smaller sized ore, as indicated by higher carbon dioxide. One of the most important problems that will be worked out with the experimental furnace will be that of finding a means of extracting iron from the low-grade ores

found especially in northern Minnesota.

**The CALIFORNIA OREGON POWER COMPANY**  
YOUR PARTNERS IN PROGRESS

**Partnership**

Your faith in the development of this country is well founded. Between 1912-1922 Copco's consumers increased 100%—the gross earnings increased 287%—and still the territory is in its infancy. \$5.00 per month invested now in 7% Copco Stock will make you a shareholder in the prosperity that's in store.

**COPCO Preferred**

Par value \$100  
Now at \$98  
Yielding 7.14%

ASK ANY MEMBER OF OUR ORGANIZATION

**The California Oregon Power Company**

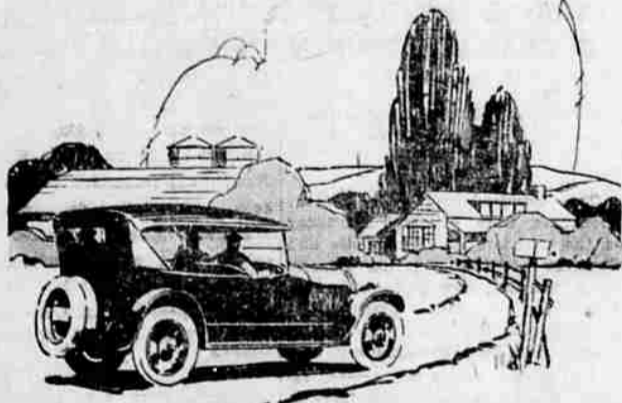
Medford, Grants Pass and Klamath Falls  
Yreka and Dunsmuir

**HARVEST DAY**  
---One of The Hardest Days  
Is the time when a good diet is necessary. Cheese is a perfect food and the best of all is  
**KLAMATH CHEESE**  
MADE BY  
**Malin Cheese and Produce Co.**  
Malin, Ore.

**Quick Starting SHELL GASOLINE**

Because of the steadily increasing demand for good motor fuel, quick starting Shell Gasoline is now available in practically every city and town in the west. No matter where you go, you'll see that famous combination of yellow and red at service stations, garages and at other dealers. Drive in at any of these places and be assured of good gasoline and good service.

SHELL COMPANY OF CALIFORNIA



**Say It With Type**

**A** SAN FRANCISCO merchant made the assertion that his firm was so well known that advertising was unnecessary. To prove the assertion incorrect an advertising man took a position on Market street with a representative of the well known firm by his side and asked two hundred passersby to direct him to the merchant's place of business. Two men out of two hundred were able to do so. The merchant's half million dollar book had not advertised the store so well that everybody knew about it. Herald advertising pays big dividends.

**Say It With Type**

**A Good Used Guaranteed Reconditioned Piano Saves You Real Money**



\$195 to \$250

It enables many home to have music that would otherwise have to wait another year by permitting us to grant lower prices and terms.

Possibly we have just the instrument you want at the price and terms you can afford to pay.

**EARL SHEPHERD CO.**  
Knabe Pianos—Victrolas  
507 Main Street