

# The Evening Herald

OFFICIAL PAPER OF  
KLAMATH COUNTY AND  
OF KLAMATH FALLS

Member of the Associated Press

Sixteenth Year.—No. 6513.

KLAMATH FALLS, OREGON, WEDNESDAY DECEMBER 27, 1922

PRICE FIVE CENTS

**WEATHER FORECAST**  
TONIGHT AND THURSDAY, RAIN  
OR SNOW, MODERATE SOUTH-  
EASTLY GALES.

## PROSPERITY IS PREDICTED FOR KLAMATH, 1923

### Flourishing Times in Lum- ber and Other Indus- tries Forecast

Flourishing times in the lumber industry, and larger prosperity for all, was the picture of 1923 conditions painted by speakers at the chamber of commerce forum today.

M. S. West, president of the chamber of commerce, and an official of the Big Lakes Box company, sketched a conservative background. He said that conditions were bettering and the outlook was good, but was unable to agree that normalcy had been reached. The drawback that he stressed is the condition of the farmers, who are paying almost war production costs, while the price of their products are virtually back to pre-war levels.

#### Depend on Farmers

West pointed out that farmers and stockmen used more than 40 per cent of the lumber output of the country, and until they were in a position to buy freely the lumber market, in his opinion, would not be stable.

He said, however, that the year was ending with a better outlook for the farmer and that he felt that conditions were consistently righting themselves.

A. M. Collier, of the First National bank, spoke briefly. He quoted an Oregon Agricultural college specialist, who recently made a farm survey of the Merrill and Malin sections, as saying that 5,000 steers and 17,000 lambs are being fattened in Klamath county this winter. The O. A. C. man said that Klamath was feeding more stock this winter than any other Oregon county, and declared that this region with its great forage possibilities was destined to become a great feeding country for outside stock.

#### Prosperous Year Seen

Fred Baker, Indian agent, said that the reservation expected a prosperous year in 1923.

A survey just completed shows 7,600,000 feet of merchantable timber on the reservation, he said, 95 per cent of which is yellow pine.

The Strahorn railway is expected to open up an immediately available area of between two and three billion feet when it reaches Sprague river. Baker's office has many inquiries from lumbermen who are interested, and the government is ready to market the timber as soon as assured that bona fide bids will be forthcoming at the minimum price, or better.

#### Start Mill in February

W. E. Lamm, of Lamm's mill is in California. So were the Ewauna officials and J. R. Shaw of the Shaw Bertram company. Secretary Stevenson reported that the Ewauna company had told him that they expected to start their sawmill in February, with two shifts, and that Lamm said he would cut more timber and employ more men in 1923 than in any previous season.

J. F. Kimball, of the Weyerhaeuser company said the year had a bright outlook.

The forum was entertained with two songs by a quartet consisting of W. W. Southwell, Dr. George Mallett, W. A. West and R. E. Patterson.

#### WEATHER PROBABILITIES

The Cyclo-Stormograph at Underwood's Pharmacy shows that the predicted rain falls slowly and steadily for over 24 hours, with a maximum of 1.5 inches that the storm will continue all night, at least. The temperature was lower at 2 o'clock this afternoon than it was at any time during the period since yesterday's report.

Forecast for next 24 hours:  
Unsettled with snow tonight. Moderate temperatures.  
The Thermos recording thermometer registered maximum and minimum temperatures today as follows:  
High ..... 39  
Low ..... 33

### GREATEST FIND



A veritable gateway to the past is shown here in this photo of the entrance to the 3,000-year-old treasure tomb in the Valley of the Kings, Egypt. This discovery of this tomb by Lord Carnarvon is the greatest event of its kind in history.

### INDIANS' PLEA FOR LOAN EXTENSION IS UPHELD BY C. OF C.

#### Recommendation Made That Partial Payment be Made When \$50,- 000 Falls Due May 1st

The proposal of Fred A. Baker, superintendent of the Klamath Indian reservation, to postpone repayment of the loan made by the government to the Indians, was given the approval of the chamber of commerce board of directors Tuesday with the recommendation that the Indians pay whatever may be possible.

Of the original loan of \$400,000, \$50,000 has been paid, leaving a balance of \$350,000. Of this amount \$50,000 is payable May 1. Pointing out that a payment at present would work a hardship on the Indians, Baker sought the support of the chamber to urge the government to grant an extension of time. The loan was made for the purchase of live stock. It is payable from funds derived from sale of timber on the reservation.

### COPCO CUTS MELON

#### Dividend Declared on Preferred Capital Stock of Company

At a meeting December 26 of the board of directors of the California Oregon Power company the regular dividend of \$1.75 per share on the preferred capital stock of the company was declared, payable January 25, 1923, to stockholders of record January 15, 1923, according to announcement today by J. C. Boyle, local manager. The dividend is for the quarter ending January 15, 1923, and amounts to over \$43,000.

Dividends have been paid regularly on this stock since date of issuance, Boyle said.

### OREGON FRUIT ON DISPLAY NATIONAL CANNERS' MEET

EUGENE, Dec. 27.—Three hundred cases of Oregon canned vegetables will be placed on display at the annual convention of the National Canners' association at Atlantic City, N. J., January 22 to 26, according to J. O. Holt of this city, who is chairman of the fruit section of the national association.

More than 4,000 canners and buyers will attend the convention, according to Mr. Holt, and the Oregon display will be designed to attract their attention to the products of this state. The display will consist largely of loganberries, raspberries, prunes, cherries, peaches and a few varieties of vegetables.

## PROPOSAL FOR NEW ECONOMIC MEET OPPOSED

### Fight Started in Senate by Administration Senators on Borah Plan

WASHINGTON, D. C., Dec. 27.—Administration senators under the lead of Chairman Lodge of the foreign relations committee began in the senate today a determined fight against the Borah proposal for a new international conference in Washington to discuss economic conditions and disarmament.

Lodge, who was said to have obtained President Harding's views, opened the attack as soon as the senate began work on the Borah proposal.

More than a score of republican senators in an informal conference today decided to oppose the amendment offered by Borah to the naval appropriation bill, which would request the president to call an international economic and disarmament conference.

### FIRE CAUSE REVEALED

#### Defective Stovepipe Blamed for Boivin Building Blaze

A stovepipe plugged with soot was the probable cause of the fire yesterday on the second floor of the Boivin building 118 South Fifth according to Fire Chief Ambrose. The fire was burning around the chimney in a rear bedroom, Ambrose said, and a later examination revealed that a hole had been burned through the stovepipe.

Four thousand dollars insurance was carried on the building and \$1,500 on the contents of the rooming house, which was conducted by Mrs. Love. Some of the furniture was saved.

While the building was only partially destroyed, it is probable that a permit to rebuild would not be given, Ambrose said, since the building is within the downtown fire restriction area.

### MARKET REPORT

PORTLAND, Dec. 27.—Cattle 50c lower, based on Tuesday afternoon sales, choice steers \$7.00 to \$7.50, hogs and sheep steady, eggs demoralized, 5c lower, buying prices withdrawn, selling prices 40c to 45c. Butter steady. Wheat \$1.26 to \$1.50.

## POTENT MISLETOE IS CREDITED FOR MARRIAGE LICENSES

### Rush Falls to Materialize Until Day After Christmas, When Four Couples Appear

The potency of misletoe became evident yesterday when four marriage licenses were issued by County Clerk C. R. Delap. They were to Francis McCortney Glenn and Gladys N. Metaker, both of Merrill; Earl L. Silvers of Asgrove and Cecile J. Sheenfelt; Curt N. French and Marie E. Brooks, of this city; and Donald R. Newbury of Medford and Marjorie Delzell of this city.

Only one marriage license was issued the Saturday before Christmas. It was to Atilio Marchais and Cella Carand.

Since the "usual pre-Christmas rush for licenses failed to materialize, Tuesday's business was attributed to the potency of Christmas chandelier decorations.

## 338,972 TROUT EGGS

### Shipment of Eastern Variety Re- ceived at Crooked Creek

The shipment of eastern brook trout eggs recently received at the Crooked Creek hatchery contained 338,972 eggs, according to a letter to the Klamath Sportsmen's association from Lloyd M. Tucker, hatchery superintendent.

The shipment was from Springfield, Utah, and represented an exchange made by the state game warden for rainbow trout eggs from this county. Last year 500,000 eastern brook trout eggs were imported.

According to local sportsmen, the brook trout eggs require about two years to mature, compared to three years for rainbow. The eastern brook trout is both gamey and hardy, and will survive in both warmer and colder water than the rainbow.

The fish have been planted in various lakes and rivers of the country, where, it is believed they are doing well. The first shipment will mature next year, when sportsmen will have an opportunity to test the feasibility of importing the eastern variety.

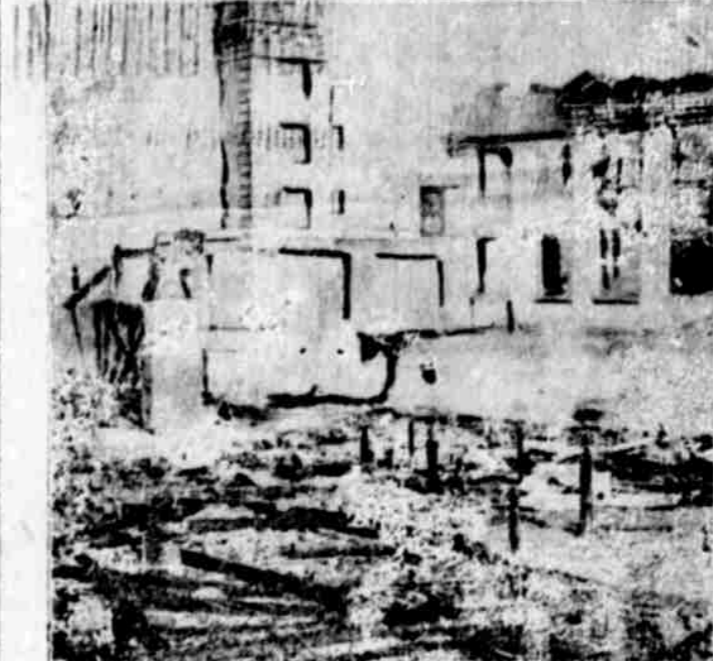
## GAIN IN YULE MAIL

### 28 Per Cent Increase Reported by Postoffice Department

WASHINGTON, D. C., Dec. 27.—A gain of 28 per cent is shown in the receipt of Christmas mail over the same period last year, the postoffice department reported.

The gain in parcel post is 15 per cent.

## Astoria's Ruins Fall



ASTORIA, Dec. 27.—A southeast storm last night blew down several parts of walls in Astoria's burned district, endangering the lives of citizens.

A part of the west wall of the Elks' temple fell on a temporary building erected for a cigar store.

No one was injured.

The above picture shows the ruins of the Weinhard hotel (left) and the Astoria National bank in the center of the devastated area.

## SARAH BERNHARDT IS WORSE FOLLOWING HER ACTIVITY OF YESTERDAY

### PARIS, Dec. 27.—Sarah Bernhardt's condition was worse again today following her activity yesterday when she arose, partook of solid food and received callers, Madame, how- ever was as confident as ever of recovery.

## BISHOP HERE FRIDAY

### The Rev. Wm. P. Remington of Eastern Oregon to Hold Services

The Rev. Wm. P. Remington, newly-appointed Episcopal bishop of the diocese of Eastern Oregon, accompanied by the Rev. Van Waters, will arrive here Friday night. He will meet with the bishop's committee that evening and with the guild at the chamber of commerce rooms at 2:30 Saturday afternoon. A public informal reception will be held in the Hall hotel annex at 8 o'clock Saturday evening. Communion services will be held in the I. O. O. F. hall at 10:30 Sunday morning and regular services at 11:00. Evening services will be at 7:30.

The Rev. Remington was formerly of South Dakota. He served as a chaplain overseas in the world war, having been made bishop while in uniform before leaving. He was a noted athlete and was prominent at the Olympic games.

## MAY DROP MURDER CHARGE AGAINST RIVERMAN AND SON

### Conflicting Stories told by Mrs. Leary May Bring Examination to Determine Sanity

PORTLAND, Dec. 27.—Unless some unexpected development occurs, District Attorney Myers will move in police court this afternoon for dismissal of the charges against Cash and Earl Weir, he announced when informed Mrs. Leary had admitted the falsity of her charges against the Weirs. Myers added that he would ask for an examination of Mrs. Leary's sanity.

Mrs. Leary, under a severe grilling following the receipt of a letter from a girl who said she was in Weir's houseboat September 23, told the detectives that her story accusing Cash Weir of killing a 15-year-old girl was false, according to an announcement by the police today. Under further questioning by Lieutenant Thatcher, however, Mrs. Leary was reported to have said Weir killed a 22-year-old woman named Betty on the night of September 23.

## PARLEY BREAK FEARED

### Present Methods of Turks Arouse Anger of Great Britain

LONDON, Dec. 27.—A Reuter dispatch from Lausanne says, "There is serious danger of the Near East conference becoming abortive if the Turks persist in their present methods."

LAUSANNE, Dec. 27.—Through Foreign Secretary Curzon, Great Britain informed the Turks today that the British never will abandon the Mosul Oil Vilayet, as requested by the Turkish delegation and that no prolongation of the Near East conference can influence the British government to recede from its position.

## TO DISBAR ATTORNEY

### Walter M. Harvey is Found Guilty on Four Counts

TACOMA, Dec. 27.—Walter M. Harvey, for nearly 30 years a prominent attorney here, and for the past year a lawyer in Seattle, has been found guilty on four counts by the state board of law examiners, and his disbarment recommended to the state supreme court today.

## THIS MACHINE COULDN'T STAND THE JAZZ STUFF

SPOKANE, Wash., Dec. 27.—Attempting to jazz his automobile up with ether during the recent cold spell here almost cost W. C. Donovan, a local attorney, his car.

The machine had balked because of the cold weather, and in an effort to get it started Donovan gave the spark plugs a few shots of ether. In some way the car caught fire, and only the prompt arrival of the fire department saved the machine.

## YEAR DRAWS TO END WITH GAIN IN INDUSTRIES

### More Favorable Conditions Shown on Coast Com- pared With Year Ago

SAN FRANCISCO, Dec. 27.—More favorable conditions for practically all industries in the Twelfth Federal Reserve district during November, as compared with the same month of 1921, is shown by John Perrin, San Francisco, federal reserve agent, in his monthly report, made public here today.

An abstract of Perrin's report follows:

"Harvesting of the crops of the district was practically completed during November, permitting a preliminary estimate of the results of the year's agricultural operations. Although the acreage planted and the yields in 1922 were smaller than those of the previous year, crops were raised with a minimum of outlay for labor and materials, and prices, except for potatoes, rice, apples, raisins and hops, are now above those of a year ago.

**Borrowings Less**  
"Banks in the country districts have steadily reduced their borrowings from the Federal Reserve bank from a total of \$24,000,000 on August 2 to \$15,000,000 December 8.

"Commercial loans of reporting member banks in the principal cities of the district, on the other hand, have increased with the acceleration of business and industry. On December 6 commercial loans of 66 reporting banks were \$760,000,000, 7 per cent above the low point of June, 1922. Investments of the same banks increased \$17,000,000.

**Sales Increase**  
"Retail and wholesale business was more active during November, 1922, than during November, 1921. Department store sales increased 14.5 per cent in value over last year and exceeded sales of November 1920 and 1919. All lines of wholesale trade reported increases in the value of their sales.

"The banks of the district were 14.6 per cent larger during November than during November, 1921. Business failures, although greater in number, were smaller in liabilities than in October or November, 1921.

**Lumber Normal**  
"The lumber industry operated at normal during November. The mills have announced that the usual winter production will be brief.

"Production of the principal metals of the district is growing steadily. Improvement in copper has been noteworthy, on December 18 electrolytic being quoted at 14 3/8 cents a pound, compared with 13 1/2 cents in October.

"Petroleum production in California during November again increased in volume faster than did consumption.

"Industrial construction during the first eleven months of 1922 has been greater in value and volume than during the whole year 1921.

**Unemployment Small**  
"Seasonal decreases in employment have been general throughout the district, but unemployment is still relatively small.

"The general price level shown by the index numbers of the United States department of labor rose from 154 to 156 during the month, taking the 1913 level as 100."

## LIGHTNER SENTENCED

### Two Years Imprisonment Penalty on Narcotic Charge

PORTLAND, Dec. 27.—A sentence of two years imprisonment on two counts of conspiracy to smuggle narcotics and liquor, were imposed today upon Dave Lightner by Federal Judge Bean. The sentences are to run concurrently and be added to a sentence of 18 months already imposed upon Lightner.

Federal officers said he would start for McNeil's island tomorrow. Judge Bean ignored the attorney's plea for leniency.

## A GOOD WAY TO GET RID OF UNDESIRABLE OBJECTS

