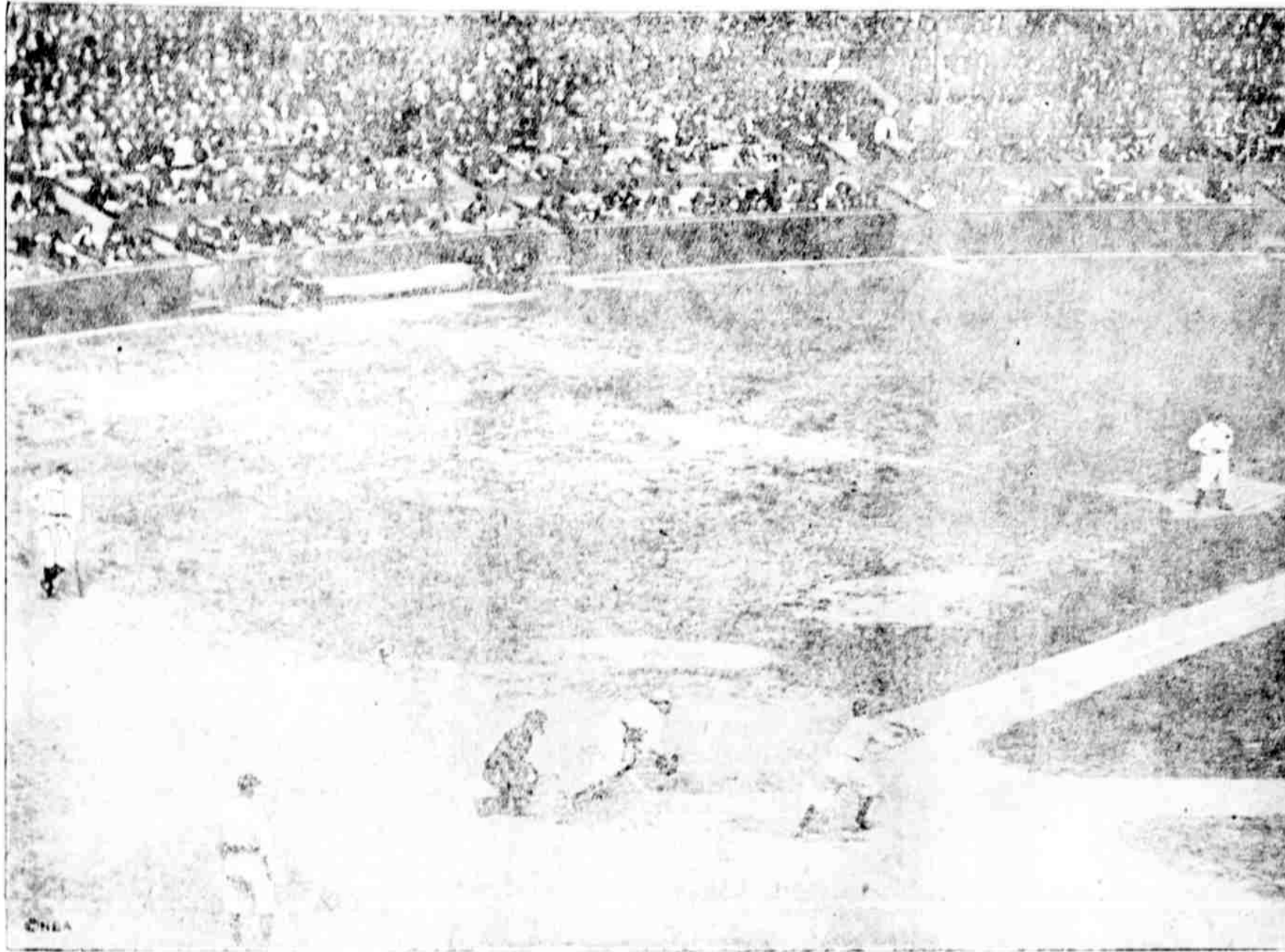


A STRIKEOUT BABE RUTH'S FIRST CONTRIBUTION TO WORLD'S SERIES



BABE RUTH FANS!—A strikeout was Babe Ruth's first contribution to 1922 world series history. On his first trip to the plate in the opening game, the big Home-Run King took three lusty swings at Pitcher's Nehf's first three offerings, without even getting a foul tip. This picture shows Ruth's third fruitless swing, with the ball safely in the mitt of Frank Snyder, Giant catcher. Umpire Klem is shown behind Snyder.

Iowa Has But One Avowed Wet Candidate

DES MOINES, Iowa, Oct. 11.—The "wet" and "dry" contest in Iowa, where prohibition was by law before the passage of the Volstead act, is now in its final phase. In the present "wet" campaign, only three of the twenty-two party candidates for the eleven congressional seats having openly declared themselves in favor of a "dry" and eight with amendment, according to a survey just completed by the Iowa Anti-Saloon league.

YOKOHAMA HOME OF IMPORTED MATERIAL IS LESS IN COST

TOKYO, Oct. 12.—A Japanese merchant, long resident abroad where he learned to enjoy the comforts of American household conveniences and utensils, has just completed a residence south of Yokohama every article and fitting of which was imported from America. It cost him, so his bills show, just half as much as it would have cost had it been built of Japanese timber and materials, and he and his family declare the comforts are not to be compared.

HARD LUCK PURSUED KING GEORGE BUT HE PERSISTED

By NIA Service
ATHENS, Oct. 12.—Persistent through many disappointments and setbacks, George, Duke of Sparta and eldest son of the former King Constantine, is at last on the throne. And he's going to stay there— "Until the people say they want me no more," he declares.

Yosemite Park Has Largest Attendance

YOSEMITE, Cal., Oct. 13.—Yosemite has won again, according to local authorities, in the annual race between the national parks for the greatest attendance. This year Yosemite entertained more than 100,000 visitors, while Yellowstone park reported a total of 98,000.

Advertisement for Queen Quality Shoes. It features an illustration of a woman in a dress and a pair of high-heeled shoes. The text reads: "They Fit Where Others Fail" and "Queen Quality SHOES". It also includes a testimonial: "WITH the 'barefoot' ease of perfect fit, you can be sure of satisfaction in QUEEN QUALITY shoes, whatever your requirements."

Lewis Union suits—in all Fall weights and fabrics. K. K. K. Store. 12-14
The sweetest day of the year, Candy Day next Saturday. Currin Says So. 12
Duchess Trousers—10c a button, \$1 a rip. K. K. K. Store. 12-14



QUEEN ELIZABETH AND KING GEORGE OF GREECE

Advertisement for Earl Shepherd Co. with the headline "DON'T CUSS The Weather". It includes a testimonial: "Weather prophets have said that we will have over six weeks of rain and the only suggestion we can offer is to make your home more attractive with a Sonora of Victrola and a few new records."



Advertisement for Dr. A. A. Soule with the headline "Why Should I Withdraw?". It contains a long testimonial: "It has been hinted that I should withdraw so as not to oppose Arthur Wilson, the League Candidate. Why not Mr. Wilson withdraw so as not to oppose me? I was in the field first. If this is not satisfactory, why not both of us withdraw so as not to oppose Mr. Lyle?"

Don't fail to read the Herald Classified Ads.