

The Evening Herald

J. MURRAY, Editor
FRED SOULE, City Editor
Published daily except Sunday, by The Herald Publishing Company of Klamath Falls, at 119 Eighth Street.

Entered at the postoffice at Klamath Falls, Ore., for transmission through the mails as second-class matter.

MEMBER OF THE ASSOCIATED PRESS. The Associated Press is exclusively entitled to the use for republication of all news dispatches credited to it, or not otherwise credited in this paper, and also the local news publisher herein.

WEDNESDAY, MAY 4, 1921

PREACHERS NOT MUCH ROUSED BY CRITICISM

(Portland Telegram)

Bertrand ministers are not taking seriously a statement that their churches are "hundreds of years behind the times," made by Municipal Judge George Rossman in connection with the cases of two Albina pool hall proprietors arrested on charges made by members of the Church of the Brethren (Dunkards).

"The church pioneered in the art of advertising," said Judge Rossman. "The steeple and the bell were perhaps the first forms of advertising that were ever used," said the jurist, "but today the church is taking away the steeple and the bells and is quickly sinking toward oblivion."

"The church can not attract young men and women into dark, damp, foul-smelling, forbidding, poorly lighted buildings, unless they make them in some way attractive. Times have changed. Puritanical ideas were all right at the time of the Pilgrims, but they are now out of date."

"I dare say that if the churches would adopt the same style of architecture, the same artistic schemes of lighting and decoration and the same attractive methods of advertising that are used by the modern motion picture theatre, they might draw the crowds that the motion picture houses now draw on Sundays."

Reply of Preachers

"Judge Rossman goes twice on Sunday to one of the very churches he is criticizing," said Dr. W. T. McIlwain, without heat, but with firm conviction. "I've heard him talk this way before. He just wants to start something. I do know of such churches that the judge criticizes, but they are in a great minority. The present church buildings couldn't be torn down. They cost too much, and the new church buildings are more attractive. Styles in architecture change just as styles in women's clothes—and men's, for that matter. If the judge had been alive the right number of years ago, he'd have been wearing silk stockings and buckled shoes. What he said won't do any harm. And I expect him around next Sunday morning as usual."

Dr. Byron J. Clark, president of the Ministerial association, said he hadn't read what Judge Rossman said. Being furnished with a copy, he estimated that the charges are true about most of the churches with which he is familiar; and that the judge must be thinking of some special sect. "There are churches and churches, you know," the doctor concluded.

Ralph McAfee, secretary of the association, feels that the judge must have said something else, or at least must have thought something else that could explain his remarks and make them have a less harsh meaning. "Judge Rossman is a constructive and forward looking citizen," asserted Mr. McAfee, "and, as a church member, could hardly have meant quite what he is quoted as saying."

Should Workers Have Parlors Is Question That Rouses England

LONDON, April 9 (By mail).—The question whether a parlor is a necessary part of a workingman's home has caused heated argument among several of the local councils organized to promote building of such homes in the industrial centers of England.

Many women members of these councils argue that the workingman's daughters need parlors to receive their callers during the courting period.

Those opposed declare that the workingman's "best room" is little more than a "oemotery for waxed flowers."

At the Theaters

THE MONDALE

A large house at the Mondale theatre last night was treated to a real show and real high class vaudeville. Miss Billie Earl, that entertaining girl, was a surprise with her quick changes and snappy songs and from the applause she received she certainly was pleasing; and Michaelson and Lee had the house in an uproar and continuously from the time they came on until they were through. These clever boys sure deserve a lot of credit and are away above the ordinary in their line. Their juggling is simply wonderful and they were a riot last night, and with the pictures it sure was a swell show. Tonight there will be an entire change of vaudeville, three big acts. Don't miss it. Sure to please.

THE LIBERTY

In "Someone in the House," a Metro special production with an all-star cast, which comes to the Liberty theatre tonight, motion picture lovers will have the opportunity to see this famous mystery drama which won such laurels on the speaking stage.

This famous mystery story has as its triple authors Larry Evans, George S. Kaufman and Walter Percival. It is the story of a society crook polished in all the ways that appeal in high life. He works his way into the confidence of the beautiful daughter of a wealthy family and schemes to betray that confidence in procuring the famous Brent diamonds. Everything works with machine like accuracy until love intrudes and the society crook finds his path of crime becomes a road of mystery.

A weakly fettered suspender button which runs true to form as the agile Buster Keaton is hastily preparing for his hilarious wedding during a brief lull in the hostilities of "Neighbors," forms one of the uproarious incidents in this fourth of his series of comedies. This premier chuckle reel will be seen at the Liberty theatre tonight.

The string of embarrassing troubles which follow in the wake of the missing button required much careful rehearsing by the actors and quite a bit of ingenuity to bring about the required results for the camera eye.

ENTERTAINMENT AT MERRILL TOMORROW EVE.

The entertainment to be given by the grade schools of Merrill on Thursday evening promises to attract many from neighboring districts. To see young children on the stage is always entertaining—even their mistakes are interesting. The fact that the proceeds are to go to the famine sufferers is a fine feature.

RESOLUTION

The City Engineer pursuant to the Resolution of the Common Council heretofore adopted, having under date of the 15th day of April, 1921, filed plans, specifications and estimates of the cost of improving Eleventh Street from Main Street to Klamath Avenue, including intersections; and the Common Council having taken the same under advisement and finding said plans, specifications and estimates satisfactory,

IT IS HEREBY RESOLVED, That said plans, specifications and estimates for the improvement of Eleventh Street from Main Street to Klamath Avenue, including intersections, be and the same are hereby approved;

AND BE IT FURTHER RESOLVED, That the Common Council heretofore declares its intention to improve said portions of Eleventh Street in accordance with said plans, specifications and estimates; said improvement to consist of paving said portions of Eleventh Street with Asphaltic concrete, bitulithic, willite or concrete. The estimated cost of the improvement of said portions of said street by placing thereon either Asphaltic Concrete, Bitulithic, Willite or Concrete to be \$6345.65, said cost including grading, rolling, curbing and cement sidewalk.

AND BE IT FURTHER RESOLVED, By the Common Council that the following described property be and is hereby declared benefited by said improvement, to-wit: Lots 5, 6, 7, 8, 9, 10, 11, 12 of Block 2, Lots 8, 7, 6, 5 and 4 of Block 4, Lots 1, 2, 3, 4, 5, of Block 3, all in Canal Addition to the City of Klamath Falls, Oregon; and Lots 1, 2, 3, 9, 10, 11 of Block 49 of Nichols Addition to the City of Klamath Falls, Oregon; and that said property above listed and described be and is hereby declared to be assessed for the expense of said improvement.

AND BE IT FURTHER RESOLVED, That Monday the 23d day of May, 1921, at the hour of 8 o'clock P. M., at the Council Chambers of the City Hall, be fixed as the time and place for the hearing of objections and remonstrances against the said proposed improvement and the Police Judge is hereby directed to cause notice of said hearing to be published as by Charter provided.

STATE OF OREGON, )
County of Klamath, ) ss.
I, A. L. LEAVITT, Police Judge of the City of Klamath Falls, Oregon, do hereby certify that the foregoing is a duly enrolled copy of a resolution adopted by the Common Council on the 2nd day of May, 1921.

A. L. LEAVITT, Police Judge. May 8-13.

ferors of China also makes a strong appeal to many.

If you are interested in children, or in the schools, or in familie relief, be at the high school gymnasium in Merrill shortly before 8 o'clock Thursday evening. The admission is 25 and 10 cents.

DORRIS PERSONALS

John Siemens Jr., cashier of the First State and Savings Bank of Klamath Falls, was a Dorris visitor yesterday on business, having driven down via Keno.

The numerous local citizens who attended the Barnes circus at Klamath Falls Monday returned with the verdict that the show was better than usual and that they enjoyed the day.

Charles Bernath was a business visitor in town yesterday morning from his farm east of Dorris.

George Carter, who operates a saw mill in the Sam's Neck region, was in town yesterday attending to matters of business in connection with the operation of his plant.

S. F. Warren, local Southern Pacific agent, has returned from Arizona where he went last week because of the death of his brother.

Mrs. Dollie Skeen spent yesterday in town visiting with friends and looking after matters of business. Mrs. Skeen resides on a farm west of town.

Howard Dayton has purchased the Paige car formerly owned by Herman Bercovich of the Dorris Mercantile company. Mr. Bercovich is the owner of a new Studebaker Six.

Men are at work on the foundation of the new residence of J. F. Shelley on California street. W. D. Miller of Klamath Falls has the contract for building.

"Kismet" is coming soon.

AN OLD RECIPE TO DARKEN HAIR

Sage Tea and Sulphur Turns Gray, Faded Hair Dark and Glossy

Almost everyone knows that Sage Tea and Sulphur, properly compounded, brings back the natural color and lustre to the hair when faded, streaked or gray. Years ago the only way to get this mixture was to make it at home, which is messy and troublesome.

Nowadays we simply ask at any drug store for "Wyeth's Sage and Sulphur Compound." You will get a large bottle of this old-time recipe improved by the addition of other ingredients, at very little cost. Everybody uses this preparation now, because no one can possibly tell that you darkened your hair, as it does it so naturally and evenly. You dampen a sponge or soft brush with it and draw this through your hair, taking one small strand at a time; by morning the gray hair disappears, and after another application or two, your hair becomes beautifully dark, thick and glossy and you look years younger.—Adv.

IF SKIN BREAKS OUT AND ITCHES APPLY SULPHUR

Just the moment you apply Mentho-Sulphur to an itching, burning or broken out skin, the itching stops and healing begins, says a noted skin specialist. This sulphur preparation, made into a pleasant cold cream, gives such a quick relief, even to fiery eczema, that nothing has ever been found to take its place.

Heat of Red Peppers Breaks Chest Colds

Ease your tight, aching chest. Stop the pain. Break up the congestion. Feel a bad cold loosen up in just a short time.

"Red Pepper Rub" is the cold remedy that brings the quickest relief. It cannot hurt you and it certainly seems to end the tightness and drive the congestion and soreness right out.

When heat penetrates right down into colds, congestion, aching muscles and sore, stiff joints, relief comes at once. Nothing has such

Factory On The Premises

In our new store we are most perfectly situated to design and make your glasses under our personal supervision, replace broken lenses and make all necessary repairs with the greatest repairs with the greatest possible speed and accuracy.

H. J. WINTERS GRADUATE OPTICIAN 706 MAIN STREET

832 Main Street Phone 91-W
Upp's Auto Service DAY AND NIGHT SERVICE

Experienced Drivers New Cars Klamath Falls, Ore.

BLOCK WOOD \$6 A LOAD PROMPT DELIVERIES FRED H. HEILBRONNER Phone 195 J, or Ewauna Box Co.

Because of its germ destroying properties, it quickly subdues the itching, cools the irritation and heals the eczema right up, leaving a clear, smooth skin in place of ugly eruptions, rash, pimples or roughness. You do not have to wait for improvement. It quickly shows. You can get a little jar of Mentho-Sulphur at any drug store.—Adv.

SALTS FINE FOR ACHING KIDNEYS

We Eat too Much Meat Which Clogs Kidneys, Then the Back Hurts

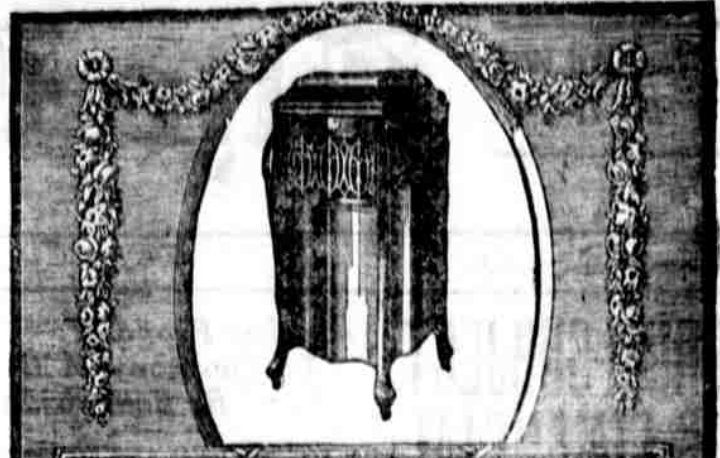
Most folks forget that the kidneys, like the bowels, get sluggish and clogged and need a flushing occasionally, else we have backache and dull misery in the kidney region, severe headaches, rheumatic twinges, torpid liver, acid stomach, sleeplessness and all sorts of bladder disorders.

You simply must keep your kidneys active and clean, and the moment you feel an ache or pain in the kidney region, get about four ounces of Jad Salts from any good drug store here, take a tablespoonful in a glass of water before breakfast for a few days and your kidneys will then act fine. This famous salt is made from the acid of grapes and lemon juice, combined with lithia, and is harmless to flush clogged kidneys and stimulate them to normal activity. It also neutralizes the acids in the urine so it no longer irritates thus ending bladder disorders.

Jad Salts is harmless; inexpensive; makes a delightful effervescent lithia-water drink which everybody should take now and then to keep their kidneys clean, thus avoiding serious complications.

A well-known local druggist says he sells lots of Jad Salts to folks who believe in overcoming kidney trouble while it is only trouble.

Phone 531-R
W. E. and J. E. PATTERSON CONTRACTING PAINTERS
We give all our work personal attention. Use nothing but first class material. Let us give you figures on your painting.
133 N. 4th St. Res. Phone 531-R



THE INSTRUMENT OF QUALITY
Sonora CLEAR AS A BELL

YOU don't have to defend the wisdom of your choice when you select the Sonora. Your friends know that it is reputed to be The Highest Class Talking Machine in the World and after they have seen and heard it, they are convinced that it lives up to its reputation.

Superb styles \$60 to \$2500

EARL SHEPHERD CO. "Time Tells the Truth" 507 Main St. Phone 282-J

Mr. Auto-Kno Says

The extent to which the Philadelphia Diamond Grid Battery makes new friends is equalled only by the way it keeps its old ones.



The Electric Shop CHAS. D. GARCELON, Prop. 123 So. Sixth St. Phone 127

Don't fail to read the Herald Classified Ads.

Hot Water Each Morning Puts Roses in Your Cheeks



To look one's best and feel one's best is to enjoy an inside bath each morning to flush from the system the previous day's waste, sour fermentations and poisonous toxins before it is absorbed into the blood. Just as coal, when it burns, leaves behind a certain amount of combustible material in the form of ashes, so the food and drink taken each day leave in the alimentary organs a certain amount of indigestible material, which if not eliminated, form toxins and poisons which are then sucked into the blood through the very ducts which are intended to suck in only nourishment to sustain the body. If you want to see the glow of healthy bloom in your cheeks, to see your skin get clearer and clearer, you are told to drink every morning upon arising, a glass of hot water with a teaspoonful of limestone phosphate in it, which is a harmless means of washing the waste material and toxins from the stomach, liver, kidneys and bowels, thus cleansing, sweetening and purifying the entire alimentary tract, before putting more food into the stomach. Girls and women with sallow skins, liver spots, pimples or pallid complexion, also those who wake up with a coated tongue, bad taste, nasty breath, others who are bothered with headaches, bilious spells, acid stomach or constipation should begin this phosphated hot water drinking and are assured of very pronounced results in one or two weeks. A quarter pound of limestone phosphate costs very little at the drug store but is sufficient to demonstrate that just as soap and hot water cleanses, purifies and freshens the skin on the outside, so hot water and limestone phosphate act on the inside organs. We must always consider that internal sanitation is vastly more important than outside cleanliness, because the skin pores do not absorb impurities into the blood, while the bowel pores do. Women who desire to enhance the beauty of their complexion should just try this for a week and notice results.