

**WILL EXHIBIT
FOUR CARS;
ALL DANDIES**

The Acme Motor company will have a string of cars on exhibit at the auto show, the Hudson, the Haynes, the Essex, and the Reo, comprising the string. John Auten, of the Acme company, reeled off these names with a triumphant smile that said plainly that he was extremely proud of all four of them, and of course anyone familiar with cars knows that John has a good reason for smiling the satisfied smile.

"Speaking of the Essex, Mr. Auten said that the straight line top has given way to an oval shaped covering, presenting a more attractive appearance, and that a plate glass has been placed in the rear windshield. Deeper upholstery of full leather is used this year, and the body is painted a dark blue, the fenders black, and the wheels red. "Can you feature that," John asked. "It's the best color combination you ever saw."

The Essex, said Mr. Auten, holds the world's endurance record established on the Cincinnati speedway, a stock Essex making 3037 miles in 50 hours, no car having ever been driven at top speed for this period of time. That is endurance for you, according to Mr. Auten.

Mr. Auten talked about the Reo, too. The Reo is the same old car except that the running gear, drive pinion, and differential are 50 per cent stronger than before. Speaking of mechanical assets, Mr. Auten mentioned the motor with four main bearings, the hot spot manifold, and the Alemite lubricating system that goes with every car. When delivered to a purchaser the Reo is equipped with U. S. Royal cord tires. The full leather upholstery is another feature. This car is known as the "Gold Standard" car. The Acme people will tell you all about it at the show.

Then, the Hudson. The one which will be shown at the auto show will be a seven passenger affair, and with the exception of an oval top, will present the same old graceful

**STROMBERG
CARBURETORS;
NOTHING ELSE**

"Stromberg carburetors," nothing else." This is the terse way in which Mallory, of the Mallory garage covered his display which will be seen at the auto show in the Acme garage. "We are going to feature this carburetor because we believe it to be the best in the world for the automobile man. That is about all we will say at this time, but those who visit the show will find us in the accessory room ready to go into its fine points and tell you why we place our business faith in it.

lines car owners admire so much.

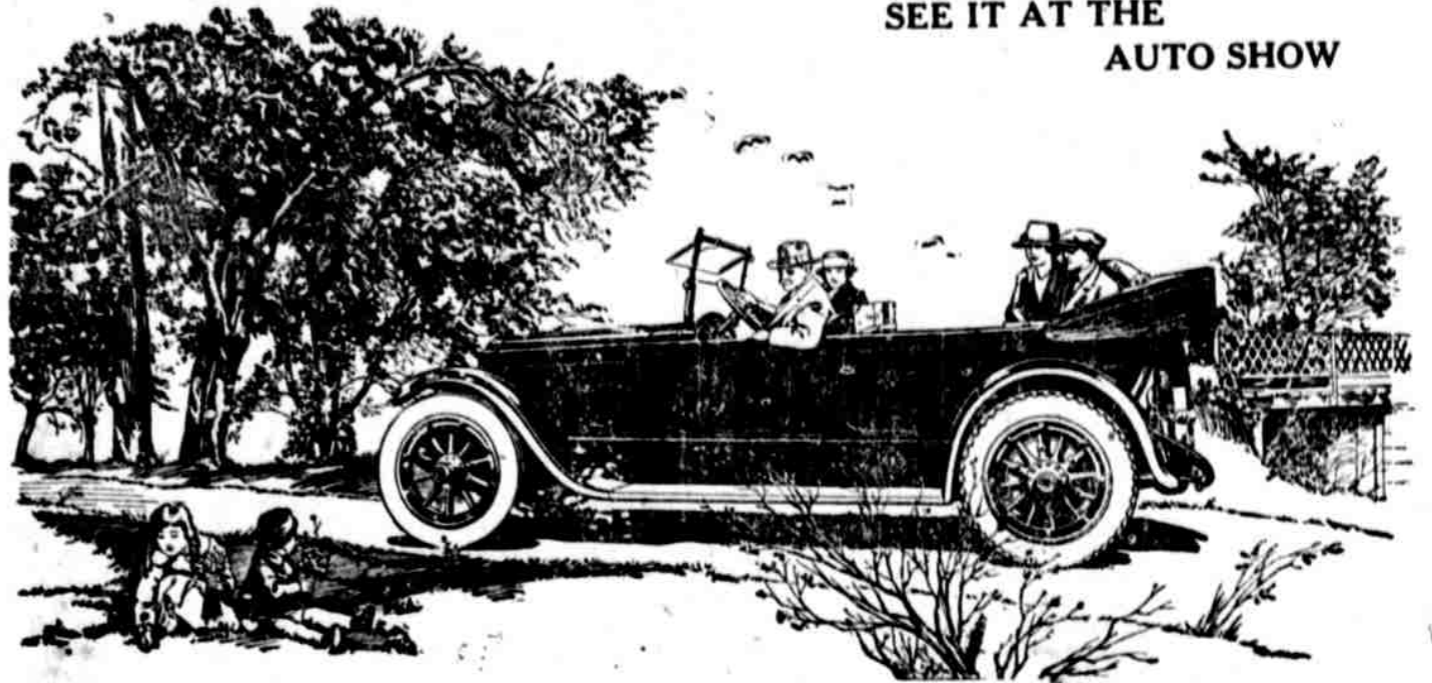
Passing to the Haynes, Mr. Auten reminds the public that it was the first gasoline car built in America, and that it has kept pace with the demands of the auto world. A high cowl in front, with an electric starter that starts the car simply through pressure on a button, deep upholstery, penciled leather, and an aluminum body are among the things that Mr. Auten named while speaking of this cars fine points.

The outstanding feature of the new 1921 Haynes seven-passenger Suburban is that it can be used either as an all-family, single compartment closed car or it may be readily transformed into a more formal limousine type by turning a small crank regulator on the back of the front seat, which raises the glass into position and adequately separates the two compartments. The advantages of this dual type of car are instantly obvious. It serves all members of the family and it can be fittingly used for balls, parties and other formal functions. This new Haynes creation is replete with the finer interior decorations which greatly enhance the serviceability and pleasure of motoring.

It would take a whole special section to tell all that Mr. Auten has to tell about these cars, but he wants The Herald to say that he will continue the dissertation at the auto show. "We are proud of these four cars," concluded the Acme's genial, effervescent booster.

PACKARD

SEE IT AT THE
AUTO SHOW



We wish you could know how well and how carefully the new Packard Single-Six is made. It is built by the same mature and experienced organization that is building the Packard Twin-Six, and that for twenty years has made Packard Cars incomparably fine. You can buy this Packard now at its new low price of \$3,000 here. This very moderate figure is only the beginning of its economy, for its cost of operation are almost incredibly low.

C. L. McWILLIAMS

**FIRESTONE
GIANT
CUSHION**

This Truck bridges the gap between Solids and Pneumatics.

It combines great resiliency with long mileage. At a cost only slightly higher than that of Solid Tires of equal rated size.

Its truck-mile cost and tire-mile cost in most instances is much lower even than Solid equipment. Its design, together with its extra volume of rubber, results in less strain, less heating and better heat radiation.

The Giant Solid and Giant Pneumatic have their specific fields of practical and successful operation. But we believe this Giant Cushion Tire answers the problem of more truck users in more lines of business than any other heavy-duty truck tire built.

No wheel changes necessary. No change of gear ratio required. Fits any S. A. E. Base. Can be applied to any standard truck wheel without delay and without additional expense.

Complies with highway laws—municipal, state or federal.

Protects the load, the road and the truck.

FIRESTONE CUSHION TIRES IN ALL SIZES
FROM 32x3 TO 40x14

We are pleased to announce that we have taken the Klamath County Agency for the entire Firestone line, including Automobile and Truck Tires and Accessories. We will carry a complete line of Solid, Cushion and Pneumatic Tires, Tubes and accessories for tires.

OVER HALF OF THE TRUCK TONNAGE OF AMERICA IS CARRIED ON FIRESTONE TIRES

The O. K. Blacksmith Shop

D. A. KENYON

Sixth and Plum Streets

If Firestone Makes It We Have It

Phone 462