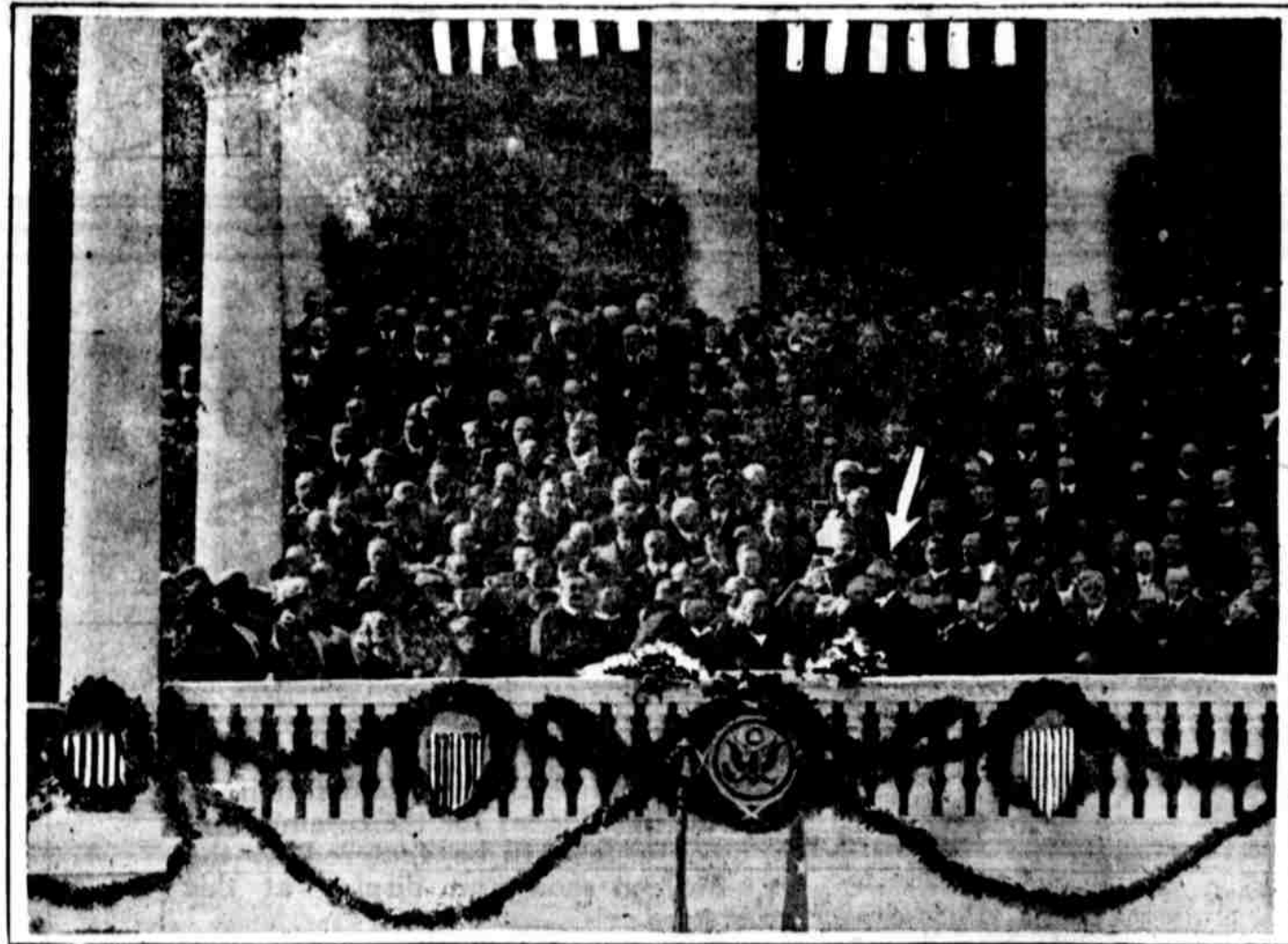


# PICTURES OF HARDING'S INAUGURATION



**HARDING AND WILSON ON WAY TO INAUGURATION**

This picture shows President Wilson and President-elect Harding on their way from the White House to the capitol, where Wilson transacted the closing business of his second term as president and Harding was inaugurated as his successor. With Wilson and Harding rode Congressman Cannon and (at the extreme right of the picture) Senator Knox.



**HARDING TAKES THE OATH OF OFFICE**

This picture shows Chief Justice White of the United States Supreme court administering the oath of office to President Harding on the stand especially erected at the capitol in Washington.

## 200 Tons of Hay Burned At Malin

MALIN, March 11.—Four stacks of hay amounting to approximately 200 tons were destroyed by fire last Monday night at the Haynes ranch five miles west of here. The hay belonged to J. R. C. Haynes and Ed. Hunter. Only Mr. Hunter's half of the hay was insured and it carried only a small insurance.

## McAboy to Build Modern Cabinet Shop, Sixth Street

W. E. McAboy, builder, announces that he has leased a site on Sixth street from B. S. Grigsby for a term of ten years, and will erect an up-to-date cabinet and wood-working shop, equipped with all the necessary machinery. Work on the building will be started in about ten days.

Get results by using class ads.

**100 Per Cent Union**  
**MONDALE THEATRE**  
Arthur Bean, Musical Director      Ted White, Manager      Ed. Crawford, Chief Operator  
**The Best for the Best**

**TONIGHT AND SATURDAY NIGHT**  
**Alma Rubens**  
—IN—  
**"MADAM SPHINX"**  
A picture of the underworld of Paris, and  
**TWO GOOD COMEDIES**  
Two shows—6:30 and 8:30  
Coming Sunday TOM MIX and the 100 per cent western serial,  
**THE PURPLE RIDERS WITH BIG JOE RYAN**  
**FREE CHILDREN'S MATINEE SUNDAY FROM 1 TO 4 O'CLOCK**  
**ONE CENT WA RTAX WILL ADMIT ANY CHILD UNDER 12 YEARS OF AGE**

**WATCH FOR A SLIP in Klamath Falls Creamery butter which if presented at our office will be cashed for \$5.00 CASH.**

**KLAMATH FALLS CREAMERY**

**The Golden Rule**

DO unto others as you would have others do unto you, is particularly applicable to buying of Oregon and Klamath Falls made products.

Make it a fifty-fifty proposition and both YOURS and the other fellow's account at the First National will grow larger.

**The FIRST NATIONAL BANK**  
— KLAMATH FALLS OREGON —

## Coffee Logic

Nature produces the flavor of fine coffee. We develop and preserve the flavor by scientific methods of blending, roasting and packing. In preparing the coffee, make it right—then you will appreciate its appetizing aroma, fine flavor, and satisfying strength.

**Hills Bros.**  
**Red Can**  
REG. U.S. PAT. OFF.  
**COFFEE**

**At the Theaters**

**THE MONDALE**

The role of "Madam Sphinx," which Alma Rubens plays in the photo drama of the same name at the Mondale theatre tonight and Saturday night, is a departure from her usual portrayals. So far, Miss Rubens has never undertaken to portray criminals out, but in this picture she takes a headlong plunge into one of the weirdest and most fascinating of the mysteries that ever emanated from the haunts of the Parisian Apache.

The closing scenes of this picture were taken in a Paris street, built for the picture at the studio, and Wallace MacDonald and Alma Rubens were shown riding through the gayly-lighted Paris streets in an old-fashioned barouche, the design and model so fashionable within the last two decades.

These scenes were taken at night, and the bright lights of the Paris street proved too much for the mettlesome steeds which smashed straight through one of the "camouflage" structures with the two oc-

**THE STAR**

If you could go into a store and be absolutely sure that what you purchased there was bound to satisfy you to the queen's taste, wouldn't it be a grand and glorious feeling? That's just the way photoplay fans feel when they see a Charles Ray picture advertised at our theatre. They know they're going to like it.

"A Village Sleuth," his latest picture, showing at the Star tonight, is one more proof of the truth of this statement. Like all the other big Ray successes, it's about country folks. But it has some brand new twists, too. A baffling mystery, involving a pretty girl, is included in the story. Agnes Christie, who Johnston wrote the original. She is the author of "Alarm Clock Andy" and, adapted "Twenty-three and a Half Hours' Leave" and "Homer Comes Home" to the screen. Thomas H. Ince produced the picture and Jerome Storm directed. It's a winner.

**Highway Board to Inspect Highway**

PORTLAND, March 11.—The state highway commission continued its meeting today, considering requests made in executive session during the past few days by various county delegations.

The commission announced a new policy requiring the counties to cooperate on a fifty-fifty basis with the state in road-building costs.

**P. T. ASS'N MEETING**

A meeting of the Parent Teachers' Association and the Henley school district will be held in the school house Tuesday evening, March 15, at 8 o'clock. Important school matters will be discussed. Refreshments will be served. A full attendance is desired.

**SATURDAY SPECIAL**

**Oranges, regular 65 c doz. now 45c doz.**  
**Bananas, regular 17c lb. now 15c lb.**  
**Almonds, regular 40c lb. now 30c lb.**  
**Lemons, regular 45 doz. now 30c doz.**

Fresh vegetables of all kinds, green peas, string beans, lettuce, cauliflower, green onions, cabbage, carrots, beets, turnips, sweet potatoes, cucumbers, coconuts and spinach.

**PALACE FRUIT CO.**  
524 Main Street