

Cabinet Selection From Car Industry

It is gratifying to know that President-elect Harding has selected one man for his cabinet from the automotive industry.

Edwin Denby, who has been appointed secretary of the navy, has man for his cabinet from the automotive service in Detroit for many years. At the present time he is a director and first vice-president of the Denby Motor Truck company, whose distributors in this territory are the Pacific Coast Motor Sales company. Denby was for five years treasurer of the Hupp Motor Car corporation and has been actively interested in many other concerns in the industry. He comes of a family which has given much service to the government, as he is the son of Charles Denby, who for many years was American minister to China.

Edwin Denby served a number of terms in congress from the Detroit district and is very active on the naval appropriation committee. During the Spanish-American war he served as an enlisted man on the U. S. S. Yosemite, and when we entered the European conflict he startled the country by enlisting as a private in the marine corps. At the end of the war he was placed on the reserve list as major, having won his way to that rank.

Because of his active interest in the navy, and because of his experience and ability, President-elect Harding has made a wise selection in Denby as secretary of the navy.

This is the opinion of M. E. McKenny, western manager of the Denby Motor Truck company, who has been a business associate of Denby's for a number of years.

PHONE BOOTHS URGED FOR MOTOR HIGHWAYS

Telephones for the use of motorists are being installed at intervals of two and a half miles on the main highways surrounding Dallas, Texas, by the Circle Automobile Men's Association. If the plan proves a success it is likely that phones will be installed on roads leading out of Dallas within a radius of 100 miles.

You auto know.
You auto go.
To the Auto Show.

Advertising pays. Try it and see.

MOTOR EXPERT INVENTOR OF NEW ENGINE

CENTRALIA, March 5.—With what is said to be complete success making the end of 15 years of experimental work, P. W. Kane, president of the Kane Pneumatic Shock Absorber company, has just completed a new gasoline engine of the rotary type. A test run is declared to have demonstrated the correctness of the principle of construction and operation.

The engine as it now stands is a true rotary, four cycle gasoline motor with the firing equivalent of a 12-cylinder engine. Eight hundred cubic inches capacity, 315 I. H. P. at 1000 R. P. M. and weighs 287 pounds. It has only seven moving parts and has neither cylinders, pistons, connecting rods or valves, and only two bearings of the Timken type.

LUTHY BATTERY SETS RECORD ON COAST

"It is with much optimism that the Luthy Battery company sets out to establish even a greater record on the event of their second year of business on the Pacific coast," declared J. P. Schiller, general manager of the Luthy Battery company, "and this is evidenced by the satisfaction of some 5000 California car owners who are now users of Luthy batteries.

"The growth of the Luthy organization on the Pacific coast has been rapid and in the golden state alone there are 105 Luthy battery stations located in up-to-the-minute buildings, and all equipped with the latest machinery and devices to care for the electrical needs of the motor car, and every Luthy battery station is manned by experts on storage batteries and automobile electric system.

MOTOR PLOW WITH MIRRORS

One type of motor plow of French manufacture is equipped with mirrors that enable the driver to see the ground ahead of him and the work he is doing at the same time.

The auto show will be here soon.

Radiators Make Identification of Motor Cars Easy

No one feature of an automobile serves so much to identify it in the minds of the people, or to lend impressive distinctiveness, as the radiator. No single feature of a car is more susceptible of artistic treatment and fine workmanship than the radiator.

Realization of this truth has been one great factor in the success of the Ansted company, 600 West 57th St., New York, whose radiator division is constantly searching for ideas and refinements of one kind or another which, when incorporated in a fine quality radiator, will serve to distinguish the car, its maker and its owner.

The Ansted company is one of the many automotive industries constituting what is known to the trade as "the Ansted interests." Frank B. Ansted, president of the United States Automotive corporation, and of its chief subsidiary, the Lexington Motor company, is also head of the Ansted company.

The Ansted company occupies the entire building on the southwest corner of 57th street and 11th avenue, in the heart of the motor industry of New York city. It is the only organization of its kind in America.

Although the radiator division is at present its largest single activity, its scope is such that it concerns itself with the development of features of refinement for de luxe motor cars.

Most of the strikingly attractive custom built cars to be seen on Fifth avenue, Michigan boulevard, and the principal thoroughfares of other large cities, and the drives of exclusive resorts, are equipped with Ansted custom-built radiators, in many cases specially designed by the Ansted company.

The winning cars in the races at Uniontown last summer were equipped with radiators designed and built by the Ansted company, and the record-breaking Deussenberg cars entered in the Indianapolis races on Decoration day were all equipped with them.

The two Lexington specials which won against a large field in the annual Pike's Peak hill climbing contest last Labor day were equipped, like several of the stockmodels, with Ansted radiators.

Ford Repairing

We specialize in the repairing of Ford cars. We use genuine Ford Motor Company parts, and guarantee first-class workmanship at very reasonable prices.

Try us on the next repair job.

We have several used cars on hand at prices much lower than you will be able to duplicate later. See them before you buy.

KLAMATH FALLS AUTO COMPANY
ROY CALL
224 Main Street

The Latest Style in Spring Footwear

for Your Automobile

LEE Tires

"SEE THE NEW CORD PUNCTURE-PROOF"

One Klamath Falls Driver Pulled

67 NAILS

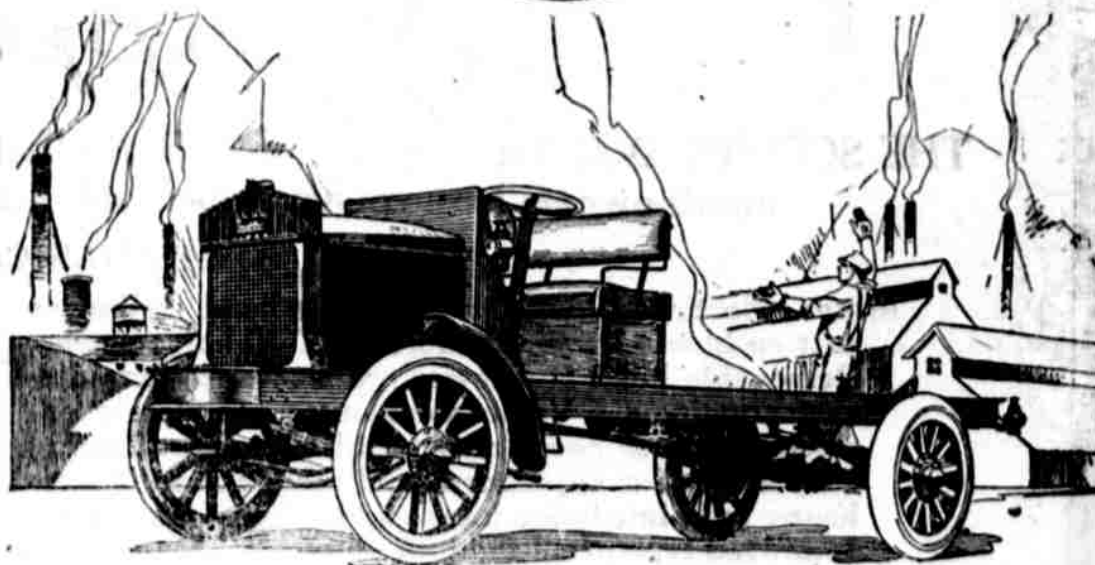
Out of the Tires of his Car but never had a Puncture

Of course he was using

Lee Puncture Proof Tires

CHARLEY'S PLACE SERVICE STATION
GAS - OIL - GREASES - VULCANIZING

Traffic Truck
4,000 LB. CAPACITY



Lowest Priced 4,000 lb Truck In the World

See the others first Then buy a **TRAFFIC**

Traffic Truck Sales & Service Company

J. R. ELLIFF
Klamath County Distributors

Headquarters White Pelican Garage