

## Nuts and Bolts

A. COTTER PINN.

Newlyrich—I'm getting an automobile. What is the first thing one ought to learn about running it?  
Wiseacre—The telephone number of the nearest repair shop.—Boston Transcript.

The time to buy a used car is just before you move, so people in the new neighborhood will think you were the one who used it.—Kansas City Star.

"Tommy, can you spell?"  
"Sure! I can spell words of four cylinders."—Motor Life.

A man refers to his automobile as "she" probably because it is something he can't reason with.—Syracuse Herald.

### SPARKING.

Kitty (playfully)—Oh, Tommy boy, why do you call your motor kitty?  
Tommy (mechanically)—She has such a gentle purr.

Kitty—Tom! ? ? ? CAT!—Rutgers.

I didn't knock anyone down today.  
Friend—That's hard luck.—The Automobilist.

Bob's dog was limping along on three feet.  
"Look, daddy! Tige's not hitting on all cylinders."—Motor Life.

Mother—Did that man kiss you last night?  
Daughter—You don't suppose he drove ninety miles to hear me sing.

"Why, Teddy! How did you catch that chicken?"  
"Oh, I des runned him and runned him till his gas give out."—Motor Life.

The farmer—Ain't that a fine cow?  
Motorist (absentmindedly)—How many miles will she do on a gallon of milk?—Passing Show (London).  
—"Topics of the Day" Films.

### HITLESS.

Friend—Did you have a pleasant drive, my dear?  
Miss Speedy—Not very exciting.

## NO MYSTERY IN YOUR BATTERY

A great many motorists have the impression that a storage battery is a black box which holds some dark, deep mystery. Some even imagine this black box contains wheels that go round. As a matter of fact, a storage battery is the personification of simplicity.

It's simply an electro-mechanical apparatus, according to W. B. Stevens of the Link River battery station and in reality it has only two wearing parts. One is the plates, the other the insulation. When T. A. Willard invented threaded rubber insulation he eliminated one of the wearing parts, as it is claimed that threaded rubber insulation will outwear the plates.

Motorists who experience difficulty in keeping their battery fully charged and in an operative condition forget the fact that every storage battery has a certain capacity which is measured in amperes. The average six-volt battery contains about 100 amperes. If you were to attach an ordinary electric light that consumed one ampere per hour it would take 100 hours before the battery would become empty.

If your lights, ignition and starting consume ten amperes per hour and your generator only generates five amperes per hour your battery is losing five amperes for every hour it is in service, and under those conditions would completely discharge in 20 hours. Would it be reasonable to blame the battery? No. Would it be the generator's fault? No.

Proper adjustment of the generator to conform to your driving conditions is the remedy, and when seeking advice from an expert tell him the truth. Don't say you are only starting 4 or 5 times a day when you are really starting 20 times. Don't tell him you are not burning your lights when you are burning them until midnight every night. Don't say you're only taking long drives when in reality you're taking short trips. If you don't give the facts you will continue to have trouble.

You auto now.  
You auto go.  
To the Auto Show.

## THE PERFECT AUTO CAR, SAYS M. S. LESTER

M. S. Lester and J. H. Gennette, proprietors of the Ewauna Motors company, are gradually putting their display rooms, in the old Herald building on Fourth street, in serviceable condition. The interior of the building has been given a light colored coat of paint, and large plate glass windows are being placed in front. This will afford them an opportunity to display their Scripps-Booth cars, for which they have the exclusive local agency, one of these cars now being on its way here from San Francisco.

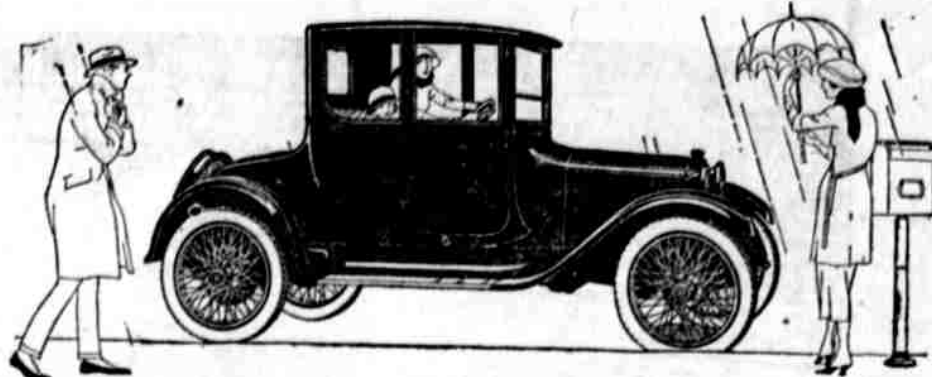
Mr. Gennette is now in San Francisco attending to a thousand and one business details, and has written to Mr. Lester that his trip to the Golden Gate city will result in the securing of a selection of Scripps-Booths that will set the pace for automobiles here.

A stripped chassis, showing the "innards" of the Scripps-Booth car, will be sent here for the auto show. This method of imparting Scripps-Booth information to the public has been very successful, "for," says Mr. Lester, "there is nothing about our car that we want to conceal. The more the public sees of its mechanism and construction, the better it will be liked. We'll tell the world it has all that a perfect auto needs."

### NEW DIRECTORS NAMED BY DODGE BROTHERS.

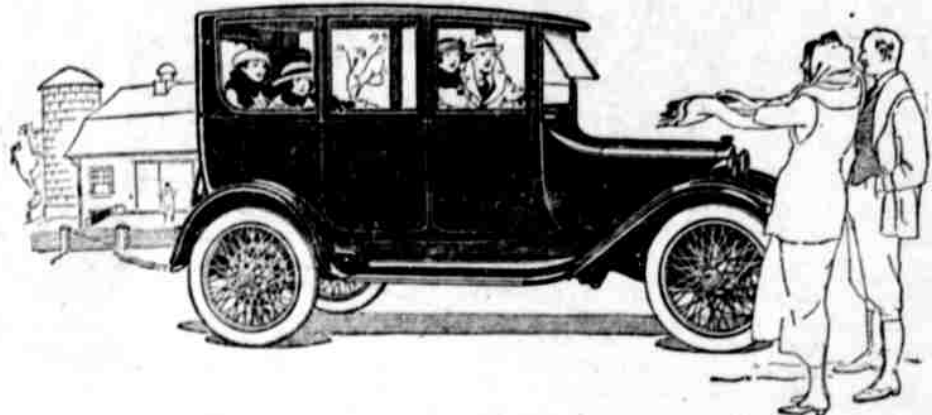
Announcement of the election of Frederick J. Haynes as president and general manager of Dodge Brothers, which was made in New York last week, is now followed by a complete list of new directors and chief executives. Arthur T. Waterfall is made vice president and assistant general manager; Harry V. Popeney, secretary of the corporation; and Reginald J. Fry, assistant secretary. Chas. W. Matheson has been advanced to the position of general sales manager. Howard B. Bloomer is made chairman of the new board of directors. The other directors are Frederick J. Haynes, Arthur T. Waterfall and John Ballantyne.

## DODGE BROTHERS COUPE



Women are always impressed by the quiet good taste of its upholstery and interior fittings. They appreciate, too, the ease with which it can be driven, and its unvarying economy.

## 4 DOOR SEDAN



The most prized possession in thousands of American homes. Because it adds most to the convenience, comfort and enjoyment of the entire family, and at small cost.

## H. S. WAKEFIELD

Fourth and Klamath

Phone 199-W

# Failure of Insulation

Is not excepted in the Philadelphia Two-Year Guarantee

The separators or insulators are an essential part of a storage battery. Properly constructed they should last as long as any other part of the battery.

Under the Philadelphia Two-Year Guarantee, failure of insulation is a basis for adjustment just the same as the failure of any other part.

But Philadelphia insulation does not fail—for three reasons.

**First**—Philadelphia battery plates are long lived, but the patented separators, of quarter-sawed, hard wood, are sufficiently strong to outlast the plates.

**Second**—The rigidity of the Diamond Grid relieves them from pressure and strain.

**Third**—The Philco Slotted Retainers offer still further protection by preventing contact between the separators and the positive plates.

You never need fear reinsulation expense if you are using a Philadelphia Diamond Grid Battery.



THE ELECTRIC SHOP

123 South Sixth St.

Phone 127

# Everything for the Wheel

Tires, Tubes, Rims, Lugs, Bolts, Nuts, Valve Stems, Valve Insides, Dust Caps, Valve Caps, Weed Chains, Reliners, Boots, Tire Cement, Patches, Tire Talc, Jacks, Tire Tools, Flaps, Tire Dough, Vulcanizing of all kinds.

## AND FISK CORD TIRES

—a good investment. With them you buy freedom from inconveniences, a resiliency which insures increased comfort in riding, an economy of fuel and protection for the mechanism of your car. You buy an assurance of long and uninterrupted usage, and greater mileage. They are handsome, stalwart tires with evident stamina to offer resistance to wear and road obstacles—a worth-while addition to any car. Next time—BUY FISK.

Made also with the famous Fisk Non-Skid Tread



# Charley's Place