

Notice!

The Old White Pelican Gerage Building REPAIR SHOP

IS NOW OPEN FOR WORK

No Apprentices Used in this Shop—All Skilled Labor
Prices Reasonable and Work Guaranteed

GIVE US A TRIAL

Voss & Figg

SHELLAC GOOD ON HOSE CONNECTIONS

Break out your paint brush and put a coat of shellac on the hose connections of your automobile if you want to get the full life out of these important parts of your cooling system.

"By keeping the rubber hose connections protected by a coating of shellac, replaced at frequent intervals, particularly between the radiator and the cylinder jacket outlet and the pump connections, the harmful effects of the water, oil and grease with which these parts come into contact is reduced to a minimum.

"Oil and grease are inevitable around a motor and they have a tendency to disintegrate and rot the rubber. The shellac, however, prevents these materials from working into the rubber. For this same reason few things are as harmful to tires as oiled streets and to allow a tire to remain standing in a pool of oil is to openly invite shortened life and quickened disintegration for your tires."

REMOVE LEAF TO ADJUST STIFF SPRING

When in the course of operation valve springs become weak, they should be stretched or else have a washer placed under them. If a car spring becomes so that one side of the vehicle sags, the addition of another leaf will remedy the trouble. In a new car it frequently happens that the owner finds cause for complaint in regard to hard riding, due to the fact that the springs are stiff. This difficulty may be obviated by removing a leaf, if so desired, but before long the new springs will lumber up merely through ordinary usage.

USE BELT DRESSING TO REMEDY SLIPPAGE

Car owners should get into the habit of using belt dressing for the clutch leather to swell it and act as a remedy for slippage. In disassembling the clutch it will be well to notice whether there is a ridge in the leather. Such a condition prevents the clutch from engaging as far as it ought to and the only way to remove the ridge is first to take out the clutch and then trim down the leather with a rasp.

AVOID CARRYING BAGS ON AUTO BUMPERS

The other day we saw a car literally covered with baggage. There were impediment on the rear and on both running-boards, and besides all this several suit cases were propped up from the bumper in front in such a way that they completely covered the front of the radiator.

How the driver expected the water to be cooled when air circulation through the radiator core was practically stopped is beyond us. The radiator needs all the consideration it can get, and it is to be hoped that not many motorists are as foolish as this one.

Children in Detroit are first taught the "Rules of the Road" in kindergarten schools.

For the month of September, Germany sent to Great Britain 410 completely equipped commercial motor vehicles.

HERE'S PROPER WAY TO DRAIN MOTOR

When draining the water system of the car, it is well to make certain that no water remains in the pipes and jackets by rocking the front of the car. This will throw the water out of bends and pockets. The majority of thermo syphon cooling systems drain off easily enough, but in the pump system it is necessary to use care. It is a good plan in draining off the water to let it run into some receptacle, a large can or pail, so that it can be used again. The reason is that in all water there is a certain proportion of foreign matter that forms deposits on the cylinder jackets and radiator. In the water already used this deposit may be supposedly already to have been made, whereas with fresh water a new deposit will be precipitated. By using the same water over and over again this furring up the water spaces may be minimized.

Smash!

A slippery street—your car damaged—somebody hurt—who pays the bill?

Insure!

DUNBAR & DUNBAR

Klamath State Bank Bldg. Phone 410

DON'T THROW IT AWAY.

WELD IT!

We can weld anything so as to make it as strong as if it were a new part.

OXCETO WELDING WORKS

CARL SCHUBERT, JR., Prop.

230 Main Street.

DODGE BROTHERS BUSINESS CAR

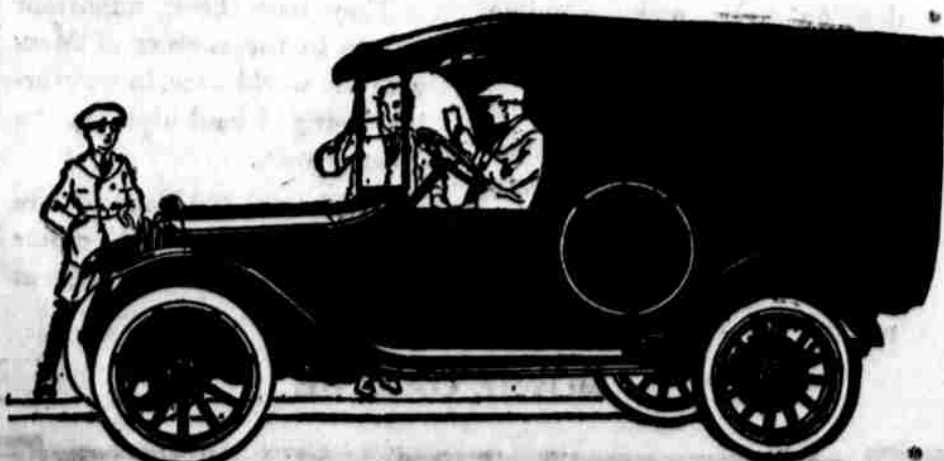
Its performance is so regular that the merchant has the satisfaction of knowing what his delivery will cost him month after month.

(The haulage cost is unusually low.)

W. S. WAKEFIELD

Fourth and Klamath

Klamath Falls



Danger!

The time of great danger to your storage battery is right now. Unless it is given proper care, winter's cold, icy weather will mean a costly repair bill or a new battery next spring.

Let us store your battery over the winter months. We are splendidly equipped to relieve you of all fuss and worry. Ample storage space and competent battery men assure you of the very utmost in battery service. And next spring when you want to get out on the road—your battery will be ready, with all the "kick" and "zip" you want.

Drive around today and let us examine your battery free, and tell you the kind of storage you should have. You will be surprised how little this storage will cost you.



The Electric Shop

123 S. Sixth. Phone 127