



# This Xmas let it be a Furniture Aristocrat

Get this Xmas guide-book to Period Furniture

Come in and let us give you a copy of "Edison and Music". Tells about the chief period designs—what they look like, what they stand for. Pithy descriptions. Beautiful illustrations. Just the information you want.

Let us show you what an exquisite thing a phonograph cabinet can be.

Every New Edison on our floor—no matter what its price—is encased in a genuine period cabinet.

Period Furniture is the world's most exquisite development of furniture. It originated in the 16th, 17th, and 18th Centuries. Europe was ruled by a Gorgeous Aristocracy. Fine living was the ideal of the day. An unparalleled race of artists, architects, and designers built palatial living-places for kings and nobles, and furnished them. The palaces of the nobility became treasure-houses of fine

furniture. It was called the "Golden Age of Furniture."

So Mr. Edison had his designers go back into the manor houses of England, the chateaux of France and the castles of Italy. They adapted 17 designs from historic masterpieces. They preserved entire "the character and feeling of the best periods" in these superb phonograph cases for the modern American home.

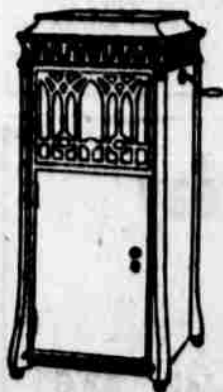
No matter which Edison cabinet you choose, you get both the arts that make your house a cultured home—music perfectly RE-CREATED and furniture of purest period source. What finer gift for all the family?

**Other Models:**

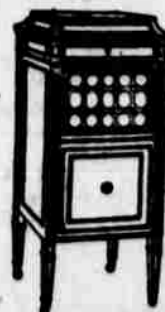
- Elizabethan
- Queen Anne
- Umbrian
- Jacobean
- Louis XIV
- Heppelwhite
- Sheraton (without inlay)
- XVIII Century English
- Italian (Consol table)
- Sheraton (Consol table)
- French Gothic (3 styles hand-carved)

Do you know about our Budget Plan?—how it brings your New Edison for Christmas?—how it makes 1921 help pay for it?—how it utilizes thrift and system to stretch your dollar? Ask about it!

## The NEW EDISON "The Phonograph with a Soul"



**Chippendale**  
The French Gothic grille, the long poem, and the artistic outward curve of the legs lend full-length grace and dignity to this case.



**Sheraton inlay**  
Embodies the graceful tapering leg, and the rectangular treatment so dear to the great English designer.



**William and Mary**  
Charmingly expressive of the grace and delicacy of this period. Takes us back to King William's marquetry workers.

### Klamath Falls Music House

GEO. A. WIRTZ, Proprietor

122 S. Sixth St. Phone 125