

AT THE THEATERS

The Star theater has booked one of those funny mixed comedies for tonight, with Bryant Washburn as star. You know, one of those pictures which keeps you laughing from the first and doesn't let you stop until

the lights go on. Honest, its that kind.

It's called "Too Much Johnson," and it's from the famous farce by William Gillette, the man who wrote "Secret Service" and other big dramas. He's just as good at comedies as he is at thrills, as you'll know when you've seen this one, his best. Lois Wilson, who appeared with Washburn in his latest picture, "It Pays to Advertise," also leads in this. It's a dandy show.

The menace of hidden enemies runs throughout the picture, "Dangerous Days," which comes to the Star theater Thursday. Alien enemies seek to combat America's effectiveness in the world war, plot against industry and individuals, and plan the destruction of both, dynamite being their favorite tool.

This is a production of the most vivid picture of the blowing up of a munitions plant ever screened. One interior scene depicts the office of the munitions plant. The explosion wrecks the office completely. Miss Barbara Castleton, in the role of Au-

BIG Harvest Dance

Saturday, October 2nd

AT MALIN

Benefit Malin Fire Department

GOOD TIME ASSURED

Everybody Invited

GARRETT'S GARAGE

FIREPROOF STEAM HEATED

In announcing the opening of what is recognized as one of the finest fireproof garages in the state, we wish to point out why you should

MAKE IT YOUR GARAGE

It is Steam Heated It assures safety for your car
It is fireproof It is conveniently located
It has a repair department and supplies, that insures speed and economy for you. All work is guaranteed.

LIVE AND DEAD STORAGE

SOLID AND PNEUMATIC GOODRICH TIRES

We are sole distributors for the Famous Hood Tires. We make adjustments here, thus making satisfaction and prompt settlement a certainty.

J. H. GARRETT & SON

OWNERS

522 South 6th St.

Phone 500

If the Wood Dealer Sold Service

We do not sell current; we sell service. That sounds odd doesn't it?

Well, suppose the wood dealer sold service instead of wood, he would tend to your furnace and your range, take away the ashes and clean the flues. You would buy so much heat.

Now you buy so much light, although you pay according to the current you consume. But the service is performed for you by this company at the substations and power plants.

That is what we want to give you—efficient service. It is the aim of this company to have none but satisfied customers. No matter what it is, if you have a grievance, or are dissatisfied about your bill or do not understand our rates, please come in and see us or write us about it.

If you have any suggestions to make, we will gladly avail ourselves of them as our aim is constantly to improve our service to you as fast as the development of science and human ability permit.

California-Oregon Power Company



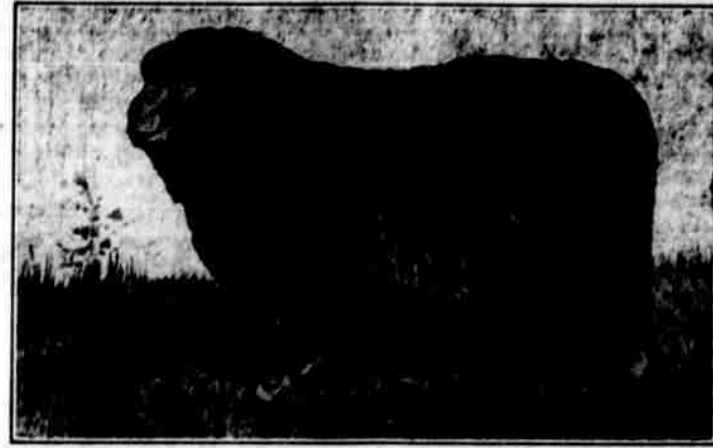
SIMPLEX CREAM SEPARATORS

for the practical dairyman. Light running and close skimming.

For Sale by
GILT EDGE CREAMERY COMPANY
Phone 381J 230 Main St.

RAMS FOR SALE

CORREADALES



Have a few yearlings and Ram Lambs ready for service now.

The attention of sheepmen, who may not know this breed, is called to their many wonderfully good qualities.

They shear a heavy fleece of fine 3/8 wool; ewes about 12 lbs—Rams up to 30 lbs. Hardy and good rustlers—big per cent of twins. Ewes give lots of milk and are the best of mothers—lambs come big and strong and mature quickly—they are the beau ideal dual purpose sheep. You do not have to sacrifice wool for meat and meat for wool, with this breed you get both. Notwithstanding the high prices obtained for wool and lambs the past few years, very few sheepmen have made any money, owing to the very heavy expense. The Correadales will make you more money than any other breed. Unexcelled for crossing with Merino ewes.

RAMBOULETTTS



Have some nice Ram Lambs ready for Service Now

Pure Bred—Big Boned—Heavy Shearers
This Ranch has been established over 20 years and never had scab or any other disease in flock yet.

REX E. BORD, Olene Ranch, Klamath Falls, Oregon

drey Valentine remains in the office, wreckage all about her, operates the switchboard, and sends for help. She narrowly avoided injury, timbers and pillars toppling close to her. The results achieved in the filming of the destruction of the great munitions plant make a sequence of scenes unsurpassed in motion pictures for gripping intensity and dramatic strength.

The bright green Amazon stone is found only in the neighborhood of Pike's peak.

Tradition places the beginning of Cambridge university as far back as the seventh century.

The male pipe-fish hatches and protects the young in a pouch under its tail.

Nearly \$4,000,000,000 worth of silver has been taken from the mines of Bolivia.

Quinine was used by the Indians for its medicinal qualities long before the arrival of white men.

The longest pyrrus rail brought down from early times is 40 yards long.

Platinum has rarely been found in single masses larger than a pigeon's egg.

Sapphire is sometimes found embedded in gneiss, but more often in clay soils.

HEAT COMFORT PEARL OIL (KEROSENE)
STANDARD OIL COMPANY (CALIFORNIA)



T. R. Wins

Threaded Rubber Insulation is as important to the storage battery as the tungsten filament is to the electric light. There are other insulations and other filaments but none that serve quite so well. The Still Better Wildard Battery—the only one with Threaded Rubber Insulation—has been selected by 136 manufacturers of cars and trucks.

LINK RIVER BATTERY STATION
7th & Klamath
Phone 17



Comfort—Cleanliness—Reasonable Rates

The Central Hotel

New Throughout

IN THESE DAYS OF HIGH PRICES THE AVERAGE CITIZEN WILL BE GLAD TO FIND A PLACE TO LIVE THAT IS WITHIN HIS REACH AND WHICH FURNISHES EVERYTHING THAT HE COULD WISH FOR—A GOOD BED, A CLEAN ROOM, PERFECT VENTILATION. THESE YOU WILL FIND AT THE CENTRAL HOTEL. SEVENTY ROOMS IN THIS GREAT HOSTELRY ARE NOW READY AND THIS NUMBER IS BEING ADDED TO AS FAST AS THEY CAN BE FINISHED AND FURNISHED.

SPECIAL RATES MADE TO PERMANENT ROOMERS. NO BETTER SPRINGS, MATTRESS OR BEDDING ARE MADE THAN THOSE FOUND AT THE CENTRAL HOTEL.

J. J. KELLER, Manager.