

COMMERCIAL USE OF AIRPLANES IS INCREASING

NEW YORK, July 28.—Commercial aviation in the United States shows a healthy, steadily growing popularity, says the Manufacturers Aircraft Association in making public here today the report of representatives who have just completed a tour of the country which included inspection flights over most of the territory now served by aerial transport.

"The airplane is undergoing the same development experienced by other vehicles of transportation introduced to the public, the various sections of the country according to their individual topography, customs and natural resources," the report said.

"The Southwest and Pacific Coast are leading in the adoption of aircraft to commercial use and plans in preparation contemplate honeycombing that area with a network of aerial transportation lines. In the Middle West the airplane is being adopted as the occasion demands, and it is meeting with encouraging success the severe competition of good railroads and highways, lack of landing fields and the considerable indifference of the Middle Atlantic states. New England is accepting it with customary conservatism; the South is using it mainly for private purposes and Florida and the West Indies have come to recognize flying as a most important method of communication.

"At present there are in the United States 15 manufacturers of aircraft and aircraft motors and 85 manufacturers of accessories. During the past few months 20 new airplane distributing agencies have been established throughout the country and new aerial transport operating companies have been formed in New York City, San Francisco, Long Beach, Hollywood, Los Angeles, Oakland, Stockton and Alameda, Cal., Minneapolis, Minn., Philadelphia, Bluefields, W. Va., Bettendorf, and Shreveport, La., Ponca City, Okla., Seattle and Spokane, Wash., Detroit, Mich., Arkansas City, Ark., Bridgeport, Conn., Aurora, Ill., Fargo, N. D., Cincinnati, O., Newell, S. D., Birmingham, Ala., Ashbury Park, N. J., Livingston, Vt., Brooklyn and Syracuse, N. Y., and Rahway, N. J.

"Aviators are convinced of the practicability of establishing passenger and express lines throughout the entire Pacific Coast, which, roughly speaking, consists of two great mountain ranges and series of valleys. The plans for such lines, now in preparation contemplate connecting San Francisco with Los Angeles, San Francisco with Del Monte, San Francisco with Portland, Ore., over the Cascade range, and Portland with Tacoma and Seattle, Wash., with an almost certain extension of this line eastward to Spokane. A 10-passenger airplane service already is in operation between San Francisco and Los Angeles and a seaplane mail and package express line between Seattle and British Columbia points will begin operations within a few weeks.

"At present there are some 150 airplanes in commercial use in California and more than 50 more in Oregon and Washington, while a number equal to that of California are in operation in Texas. Most of the machines in Texas are privately operated by persons who made fortunes in oil, but contracts recently were let for aircraft to be used in transporting supplies between cities and the oil fields. Mining and oil companies desiring emergency supplies or the replacement of special tools have come to depend on the airplane which, with the level lands and natural landing fields of the country and the long distance over which the railroads are unable to make quick time, has provided an impetus to commercial adoption of the airplane in Texas.

"A score of flying boats are in operation on the Mississippi and other rivers of the Middle West, and 15 on Lake Michigan, with every indication pointing to a substantial increase of the number before winter. Negotiations also are under way for 10 American-built flying boats of the recently produced 12 and 18 passenger type for use over the Great Lakes and the St. Lawrence river.

The Johnson mower is the mower for you. It is durable and capable. We sell them. Howie Garage, City.

SPECIAL
Boys' Unionsuits.....49c
—Lightweight summer unionsuits, short sleeves, ankle length, all sizes. Worth up to 85c.

GOLDEN RULE

VANNICE BROTHERS

SPECIAL
Men's Wash Ties.....55c
—A colorful assortment of gay Summer wash ties for men. Regular 75c.

End-of-the-Month Three Day Sale

THURSDAY, FRIDAY AND SATURDAY ONLY

ON THURSDAY, FRIDAY AND SATURDAY we will hold our second regular End-of-the-Month Three Day Sale. These sales will continue to be a regular feature of our monthly merchandising plans. Their purpose is to dispose of remnants, broken sizes and to effect a monthly clearance of portions of our regular stock. When the sale is over, at the end of three days, the goods included will be returned to regular stock and sold at regular prices. The sale this month offers excellent, seasonable merchandise at noteworthy reductions made necessary by the impending arrival of new Fall goods—but, since the sale lasts 3 days only, you must hasten if you wish to profit by it.



Dainty Blouses

Of Georgette, Voile and Crepe-de-Chine

Half-Price

MORE THAN 100 exquisite blouses have been grouped together and reduced exactly 1/2 in price for quick clearance.

Included in this group are a great many blouses of georgette and crepe de chine in a seemingly endless variety of fetching styles. There are a number of the dainty two-tone effects as well as many simple little waists trimmed with lace and embroidery.

There's also quite an assortment of the dainty lingerie blouses of voile which Dame Fashion has deemed correct for wear with suits all year 'round. Trimmed with lace and adorned with little trills and tucks.

Children's Barefoot Sandals 1-3 Off
—Our entire stock of barefoot sandals and play oxfords at 1-3 off regular prices.

Women's "Sealpax" Unionsuits 1-3 off
—These unionsuits are ideal for Summer wear, and are fashioned like the famous "B. V. D." athletic underwear for men. Made of white and flesh voile and batiste.

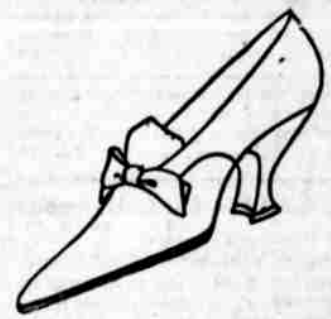
Children's Wash Suits 1-2 off
—About 50 pretty little wash suits for children, made of chambray, kiddie-cloth, khaki, and cotton twill—trimmed with white dimity and pique—may be had at 1/2 the regular prices. Sizes from 2 to 8 years.

Special, Coats 1-2 off
—The balance of our stock of Spring and Summer Coats, about 20 attractive models, has been reduced 50% in price for this sale.
—Included in this group of coats are a number of sports coats of tweeds and sports fabrics; many long coats of serge, in Copenhagen and Navy blue; and a few coats of black taffeta and satin. Most of the styles are rather conservative and every one of these coats is suitable for at least two seasons' wear.

Special—PALM BEACH CLOTH 1/2 off
—Genuine Palm Beach Cloth in a pleasing assortment of striped patterns. Reg. \$1.50 yd.

Summery White Canvas Shoes 1-3 off

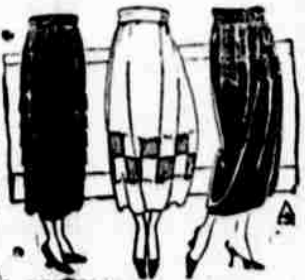
About 300 pair of fine white canvas shoes are included in this End-of-the-Month Special. Five different lots are affected by this reduction and, altho there is not a complete range of sizes in any lot, all sizes may be found in the whole group.



Attractive "Mary Jane" pumps. Reg. \$3.35—1-3 off.....	\$2.24	High shoes, military heels. Reg. \$4.85—1-3 off.....	\$3.24
High shoes with low heels. Reg. \$3.00—1-3 off.....	\$2.00	White pumps, Cuban heels. Reg. \$3.90—1-3 off.....	\$2.60
Pretty oxfords, Cuban heels. Reg. \$5.00—1-3 off.....	\$3.34	Dainty pumps, Cuban heels. Reg. \$5.00—1-3 off.....	\$3.34
One-eye Ties, high heels. Reg. \$6.85—1-3 off.....	\$4.57	Graceful pumps, high heels. Reg. \$6.35—1-3 off.....	\$4.24

All Silk Petticoats 25 per cent Off
—Petticoats of silk jersey, with fancy accordion-pleated flounces in grey, copenhagen, purple, green, navy, and black.
—Satin Petticoats in navy, green and black.
—And a whole line of crepe de chine petticoats in yellow, gold, maize, pink, and light green, Reg. \$7.50—25% off.....**\$5.63**

Special -- All Sport Skirts 25 per cent Off



Our entire stock of charmingly fashioned sports skirts is offered, during the End-of-the-Month 3 Day Sale only, at 25% off the regular prices.

—Included in our large stock of separate skirts is a great number of attractive models of blue serge and wool poplin as well as an attractive assortment of the favored sports skirts—some of which are made of novelty plaid silks and baronette, others of charming wool plaids and checks.

Silk Hosiery Specially Priced

\$3.50 Silk Hosiery, in white and black, all sizes. Special.....	\$2.98
\$2.90, \$3.00 Silk Hosiery, in white, black, cordovan and pink. Special.....	\$2.39
\$2.50 Silk Hosiery, in white, black and cordovan. Special.....	\$1.98
\$2.00 Silk Hosiery, in cordovan, white and black. Special.....	\$1.69
Fine Lisle Hosiery, in white, grey, black and cordovan. Reg. 59c, 69c, 75c. Special.....	50c
SPECIAL, Lisle Hosiery, slightly imperfect, in grey, white, black and cordovan. broken sizes.....	39c

Special--Galatea 39c Yard
MOTHERS who are planning to sew their children's school clothing will find this strong, attractive material ideally adapted to their needs. It is 27 inches wide and comes in a great variety of pretty stripes and plain colors. If we were to buy this material now we would have to sell it for 65c a yard. Special, during the 3 Day Sale only, at 39c yd.

A Great Assortments of Remnants 1-2 off
Included in this sale of remnants are many pieces of sports and novelty silks suitable for skirts and blouses; short lengths of wool fabrics which can be used for children's coats; many yards of ginghams and other wash goods in pieces long enough to make dresses, bungalow aprons and children's wash clothing

Gingham and "Junior-Cloth" 25c Yd.
—The ginghams included in this sale are the 27-in. wide Red Seal stripes and checks and many pieces of 32-in. gingham in stripes and plaids. Regular prices 39c and 45c.
The "Junior-cloth" is 27 inches wide and is another of the fabrics made especially for children's wash suits and dresses. It comes in a variety of attractive stripes.

Special—Women's Unionsuits \$2.89
—Fine Lisle Summer Unionsuits, glove silk tops, sleeveless, knee-length. Regular price \$3.89.

GOLDEN RULE

VANNICE BROTHERS