

STEAKS

CHOPS

# BAKRITE BREAD

## THE REX CAFE

IS NOW READY TO RETAIL BREAD, PIES, FRENCH PASTRY AND ALL OTHER HIGH CLASS PASTRIES TO THE PUBLIC. ON SALE AT THE MAZE CONFECTIONERY STORE, PALACE MEAT MARKET, THE REX CAFE.

## THE REX CAFE

CORNER SEVENTH AND MAIN

FISH

OYSTERS

THE USE OF these columns will make money for you.

### COLLEGE FOR SHANGHAI

SHANGHAI, March 10. (By Mail.)—Announcement received from Canton early in March is to the effect that the administrative Council of Canton has chosen Shanghai as the location of the Southwestern University, the building of which has been under consideration for months at the southern capital. It is stated that \$400,000 is being provided for the erection of the new school.

### CALIFORNIA FARMERS MAKE OWN LUMBER

BERKELEY, Cal., April 26.—The Farm Bureau in Glenn county has formed a lumbering department for the purpose of manufacturing and selling at cost to farmers all products prepared by the department, according to W. H. Helleman, secretary of the California Farm Bureau Federation. The department, financed by the membership of the Glenn county Bureau, has bought a sawmill and has acquired stumpage in the California National Forest. Contracts have been let for the logging, sawing and delivery of lumber and box material, said Mr. Helleman, and it is believed that the lumber will be sold at \$35 per thousand board feet.

## Warren Hunt Hospital

A thoroughly equipped institution affording unexcelled facilities for the scientific treatment by hospital methods of medical, surgical and obstetrical cases.

The new and modern fireproof building contains private rooms for bed and ambulatory cases, completely equipped examination and treatment rooms, Roentgen Ray, clinical and research laboratories.

### STAFF—

WARREN HUNT, M. D.  
L. L. TRUAX, M. D.  
GEO. A. MASSEY, M. D.

### LOCATION—

FOURTH AND PINE STS.,  
KLAMATH FALLS, ORE.

TELEPHONE 497  
AMBULANCE SERVICE

## Western Floral Shop



LEAVE YOUR ORDER FOR FLOWERS in person if at all possible. A visit here will show how thoroughly we are prepared to meet any floral need from flowers for the table to the decoration of the largest church for feast, festival or wedding. Our cut flowers are received fresh every day. You will find your favorite here at all times in the perfection of its beauty. Moderate prices are the invariable rule.  
MRS. L. C. MOORE  
702 Main

## NATIONS WILL ENTER BEST IN TOURNAMENT

NEW YORK, April 26.—While the American Olympic committee, and other sport organizations thru-out the United States are arranging to have this country faultlessly represented in the Olympic games this year, many other countries are just as keenly making thorough preparations with the same object in view.

Sweden is exhibiting wonderful energy in her preparations and while she does not expect to be able to win over the United States, she intends to make a hard fight and hopes to be able to score the highest number of points next to America, despite the fact that the games will include some typical British events, such as archery, in which Sweden will not compete. These efforts are backed by ample funds, some of which have been granted by the Swedish government while big sums have been donated by private individuals, the estimated amount now available being about 600,000 krona.

The selection of the Swedish field and track athletes has been going on during the winter months under the supervision of numerous trainers, the country having been divided into six districts for this purpose. The chief trainer is Ernie Hjertberg, who for many years was the coach of the Irish-American Athletic Club in New York. The trial meeting will be held in April and the latest parade and last overhauling will take place in Stockholm in July about a fortnight before the games begin. With Swedish swimmers the preparatory work also has been carried on during the winter and the majority of good old Swedish swimmers are said to be in fine shape. Besides these several remarkable new men have been developed.

Sweden has the oldest waterplay clubs in the world and now every effort will be made to live up to these traditions at Antwerp. Sweden will not limit herself to concentrating her attention on the diving, high diving, fancy diving, etc., but expects to send a very fast lot of men into the races. Some quite remarkable results have already been recorded and a 100-metre crawl in 1:05-2:5 and 200-metres breast stroke in 2:21 should stir up swimmers all over the world.

## LAND BURIED BY LAVA FLOW

HILO, Island of Hawaii, T. M., Apr. 18. (By Mail.)—Millions of tons of lava, which have been pouring from the great volcano of Kilauea during the past three months, have buried approximately 25 square miles of country under a coating averaging 100 feet in thickness. The great flows, streaming in every direction from their source in the old rift of 1868, still are moving slowly forward and at one point are within two miles of the sea, and 12 miles from the fountain head.

The glittering floods of crimson lava are coming from the southern flank of Kilauea. What was formerly a quiet expanse of sandy waste, dotted with green oases, now is a smoking tract of ruin and desolation. A few charred fragments mark the sites of former forests buried deep beneath the torrents of molten stone ejected by the volcano.

Trained observers who have watched Kilauea for many years say that it is extremely difficult to find their way about or pick out the old landmarks. Where, in former days, stretched the level sandy plain, plentifully sprinkled with olivines and volcanic rock, now there rises a lava dome three miles in length and upwards of 200 feet in height.

Wellings from an earthquake rift, flows have piled on top of flows, the crest creased by hot, cherry-red cracks some of which emit gas flames. At the summit of the dome is a large lake of lava, nearly half a mile in length, having an average breadth of 300 yards. From the surface of the lake lava fountains are continually playing.

Evidences of tremendous destruction are to be found in the section where the lower forests used to stand. Tall ohia trees, now charred wrecks, but in some cases still burning, rise forlornly amid the general desolation.

In one place there is to be seen the remnant of a heavy stone wall, which, before the last flows started, marked the boundary of the Kapa-

THE PHILADELPHIA STORAGE BATTERY, THE BATTERY WITH A TWO-YEAR GUARANTEE

## HORACE SHIDLER

6th, Between Main and Klamath

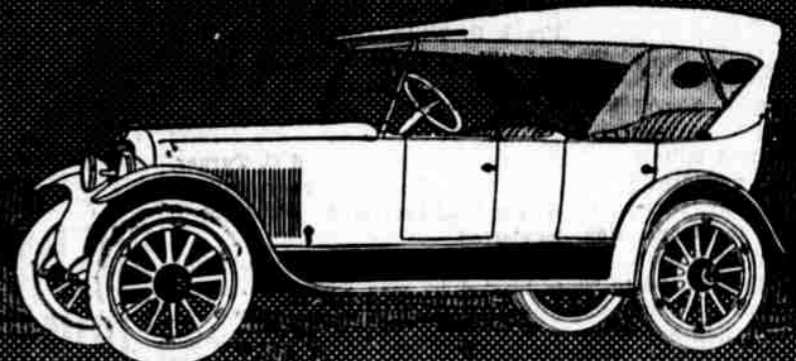
Phone 127

# Maibohm

**Zip**—A mere touch on the accelerator and Maibohm gets into action as easily as turning on an electric switch. Zip! You are out of the traffic jam. Zoom! You have passed the car which has been throwing dust in your face. Maibohm's ever ready reserve makes it a worth-while car in a pinch or in the open. Meanwhile you repose in restful comfort in cushioning that fits.

J. H. Garrett & Son

MAIBOHM  
Sandusky  
O.



pala ranch. The moving lava surged against the wall, pushed it over and buried the greater length of it under the molten flood.

The stretch of country across which the present lava streams are moving is a mass of under-the-surface tubes and tunnels formed by old flows, mostly in the great eruption of 1868. The present molten river running through these and entering sealed caverns are continually blowing up the cavern roofs with loud explosions and showers of red-hot rock, which make detailed examination hazardous.

The scene by night is described as one never to be forgotten. Great crevasses, small cracks and the living streams pushing forward, all glow vivid crimson. Blazing trees, caught in the flows, and their lurid glare to a picture whose background is masses of smoke and steam clouds. With intense activity within the inner crater of Kilauea, volcano observers say that it appears unlikely the present eruption will come to an end until late in the summer.

Violet is the mourning color in Turkey.

The first sleeping cars were used on the Cumberland Valley railroad, between Harrisburgh and Chambersburg, in 1828.

The kitchen of the Shah of Persia is the most valuable in the world. Even the pans and pots are lined with gold, and the plates and dishes used at the royal tables are of solid gold, encrusted with precious stones.

In some parts of rural England, notably in Yorkshire, a very curious belief prevails among boys that if any mention is made of lightning immediately after a flash has occurred the speaker's trousers will be torn.

## If the Wood Dealer Sold Service

We do not sell current; we sell service. That sounds odd doesn't it?

Well, suppose the wood dealer sold service instead of wood, he would tend to your furnace and your range, take away the ash and clean the flues. You would buy so much heat.

Now you buy so much light, although you pay according to the current you consume. But the service is performed for you by this company at the substations and power plants.

That is what we want to give you—efficient service. It is the aim of this company to have none but satisfied customers. No matter what it is, if you have a grievance, or are dissatisfied about your bill or do not understand our rates, please come in and see us or write us about it.

If you have any suggestions to make, we will gladly avail ourselves of them as our aim is constantly to improve our service to you as fast as the development of science and human ability permit.

California-Oregon Power  
Company

## BUY A "MADE IN KLAMATH FALLS" PRODUCT

WE MANUFACTURE

- |         |              |            |                |
|---------|--------------|------------|----------------|
| Windows | Cupboards    | Showcases  | Mouldings      |
| Doors   | Bookcases    | Counters   | Flooring       |
| Screens | Seats        | Shelving   | Rustic         |
| Frames  | Cabinets     | Tables     | Scroll Saw     |
| Panels  | Cedar-Chests | Wall Cases | and Lathe Work |

## Lakeside Lumber Company

Dealers in Lumber, Shingles, Cement, Roofing, Glass, Cedar Posts, Wall Board and Builders' Supplies

MILL AND YARDS KLAMATH AVE. AND CENTER ST.

PHONE 128