

**The Evening Herald**

E. J. MURRAY  
Editor  
FRED SOULE  
City Editor

Published daily, except Sunday, by  
The Herald Publishing Company of  
Klamath Falls, at 115 Fourth Street.

Entered at the postoffice at Klamath Falls, Ore., for transmission thru the mails as second-class matter.

Subscription terms by mail to any address in the United States:  
One year \$5.00  
One month .50

Member of the Associated Press.  
The Associated Press is exclusively entitled to the use for republication of all news dispatches credited to it or not otherwise credited in this paper, and also local news published herein.

All rights of republication of special dispatches herein are also reserved.

TUESDAY, MARCH 30, 1920

**WE KNOW IT!**

It is not an unusual thing for someone to tell the editor that some of the stuff he prints is junk. Every editor knows this as well as the next fellow, but he doesn't run his paper to please himself and neither does he expect to please every one of his readers all of the time. He frequently publishes something that is uninteresting or even foolish in his own estimation because he knows that it will interest a portion of his readers.

A paragraph in the Nebraska City Daily Press has something to say about this:

"A man told us the other day this column is composed of rot. We agreed with him and seemed to take him by surprise. We know it is rot. In other words, our mind tracks willingly with his. We are no Lansing. We like our job and want to keep it. We told him, though that he needn't read the column; if it doesn't suit him to get a little column all his own. This is our column. Frequently we say things in it that do not even suit the men who own the newspaper. They, too, tell us this column is full of rot. And as for the compositors who set this column, it makes them sick at their stomachs."

**TULE LAKE HOMESTEAD**

Mrs. William Freir and son, Christian, were Merrill visitors Monday. Mr. and Mrs. McComb and son, David, spent Sunday with Mrs. Case and family of Mt. Laki.

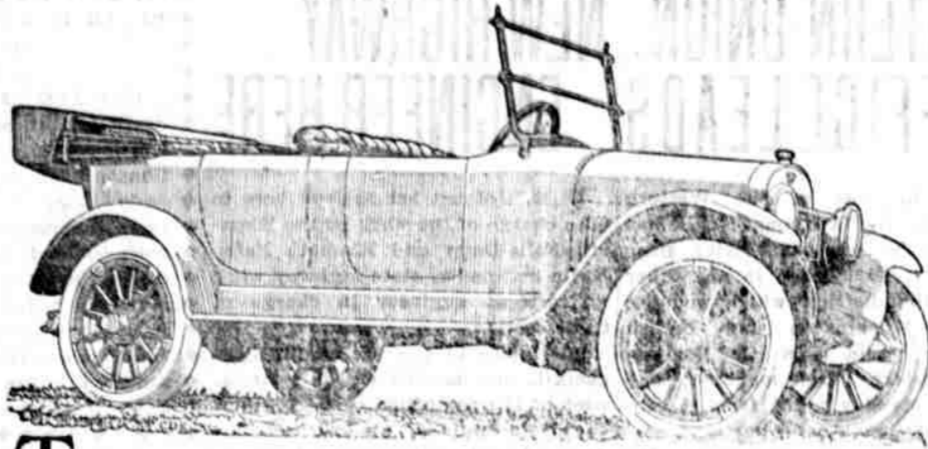
Mrs. Roy Fogle was a Klamath Falls visitor Thursday.

Mr. Bramhall and Douglas Bussey went to Klamath Falls, Monday on business.

The Shasta View Sunday school is arranging for a program for Easter Sunday. There will be music and exercises by the children. Everyone interested is invited to attend. Services beginning at 10:30.

In the middle ages noble Italian women filled the chairs of law, mathematics and philosophy in some of the principal universities.

Pound for pound the steels in a  
**MAXWELL**  
equal those in any car



**T**HE tendency in cars today is to reduce weight, to cut out unnecessary pounds, to take those extra pounds off the power of an engine.

In a Maxwell there is hardly a superfluous pound. Like a great cross country runner, it carries no handicap in weight.

It is made of fine steels, and these steels have that magic combination that metallurgists strive for—light weight and extra strength.

These steels are made to order for Maxwell. They are treated in great furnaces, and they are strong beyond belief.

Pound for pound, they equal the steels in any car built.

But they more than repay for their high cost.

They wear. They stand terrific abuse. They defy time.

But their greatest task is to lighten the burden of the Maxwell engine, enable it to perform brilliantly, and make gasoline deliver extended mileage.

Thus you will understand that rise of Maxwell the world over, that ever growing friendship, that ever increasing demand.

Today nearly 400,000 in use. In 1920, 100,000 more. Still this will fill but 60% of the world's requirements for this remarkable car.

**Howie Garage**



More miles per gallon  
More miles on time

Something like \$10,000 a year, it is said, is appropriated to buy novels for the ladies of the Turkish Sultan's household.

Among the prized possessions of all Portuguese women of the peasant class are pendants and chains of the finest gold, which are handed down from generation to generation.

**AT THE THEATERS**

Gladys Brockwell makes the fight of her life, according to advance reports, in the new Fox photoplay "Thieves" that is coming to the Liberty theatre tonight.

This clever emotional star portrays a thief with the soul of a true woman. When thieving would have been easier, her soul awakens under the influence of love, and she elects to go straight. Her big fight for love and honor comes at the end of a play that is said to be intensely dramatic in action, powerful in love element and with high moral purpose.

Here's a picture you ought to see by all means. It is "The Little Intruder," starring Louise Huff and it presents this fascinating star in a particularly delightful role and in a new sort of a picture that not alone has a punch, but also an engrossing mystery. "The Little Intruder" is scheduled for showing on Wednesday at the Liberty theatre. George MacQuarrie, Johnny Hines, Albert Hart and Stuart Holmes are among the famous film favorites who are seen in support of Miss Huff in this strikingly interesting and entertaining picture.

Discussion of ways and means to curb the present wild orgy of money-spending has served to recall the action of the late Queen Louisa of Denmark, who, determined to put a stop to female extravagance, drove through the streets of Copenhagen in a calico dress.

Miss Agnes M. Olsen of Chicago and Mrs. W. H. Jobe of Detroit are two experts in the lumber industry who have been much in demand as speakers on home building at the lumbermen's conventions this winter.

**ADVERTISEMENT**

Sealed proposals will be received at the office of the Enterprise Irrigation District, Klamath Falls, Oregon, until 2 o'clock p. m., March 30, 1920, for the construction of two pump houses with concrete foundations and pump sumps.

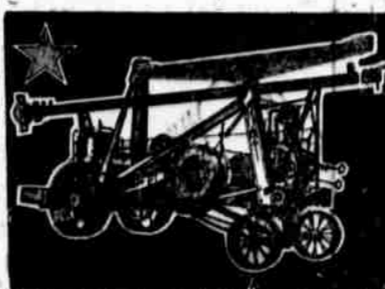
The work will include the excavation of approximately 350 cubic yards of Class No. 1 material; the placing of approximately 125 cubic yards of concrete; and the construction of two timber and sheet metal buildings requiring approximately 3,000 Ft. B. M. of fir lumber and 36 squares of corrugated sheet metal.

For particulars address Secretary of the Enterprise Irrigation District, Klamath Falls, Oregon, or C. T. Darley, Engr., Klamath Falls, Oregon. 20-30

ADVERTISE FOR WHAT YOU WANT and you will get it.

ATTENTION:—FARMERS, CONTRACTORS AND TRUCK USERS.

United Motors Service Company is offering for sale direct to the users, the United Motor Trucks in 1 1/2, 2 1/2, 3 1/2 and 5 ton sizes and 6 ton tractors. Big discount, save the agent's commission. For prices and discounts, write Thomas Randles, care United Motors Service Company, 24 North 15th St., Portland, Oregon. 11



**VOCHATZER BROS.**  
WELL DRILLERS

Give Us a Trial  
Phone 295-M  
Klamath Falls, Oregon

A Herald Want Ad. will sell it.

**Jack O'Leather**

SUITS FOR BOYS  
GUARANTEED  
LEATHERIZED—ALL WOOL



Better-dressed boys in better-built suits. That's what happens when they wear Jack O'Leather. Jack O'Leather Suits for Boys are "Leatherized." All the wear-spots—the seat, knees, elbows and all pockets—are lined with light-weight, soft, pliable, real leather.

This leather lining in Jack O'Leather suits, combined with fabrics of the purest wool, means twice the wear of ordinary suits.

Jack O'Leather prices are no higher than you usually pay, and every suit is guaranteed. See these remarkable "leatherized suits." They're new, and cut clothing costs in half, by giving twice the wear of ordinary suits.

Sold only by us in this city



The Diagrams Tell the Story

Leatherized where the wear comes with a lining of soft, pliable, real leather at seat, knees, elbows and pockets.



**K. Sugarman**

"I AIN'T MAD AT NOBODY"

Fifty years ago the Pennsylvania Medical society had a rule prohibiting members from consulting with women physicians, on pain of expulsion from the society. The rule was rescinded in 1871.

The Vermont Federation of Women's clubs will celebrate its silver jubilee in 1921.

**LABORERS WANTED**

Highway Construction  
Apply 319 S. Spring St.  
23-30

WHEN YOU WANT ANYTHING in a hurry advertise for it here.

**Metropolitan Garage**

Used Car Sales Depot  
11th near Klamath

6-Cylinder Paige, 5-passenger  
Bought last August—like new

6-Cylinder Premier  
in fine shape

1-Ton Trailer  
with large metal-lined body

1912 4-Cylinder Buick, 5-Passenger

**Make Us An Offer**

"An all-around good shot. That's us."

—Chesterfield

WHAT we're aiming at, is that it takes both skill and precision to blend tobaccos the Chesterfield way. Maybe this is why you find "Satisfy" in Chesterfields and nowhere else.



**Chesterfield**  
CIGARETTES  
They Satisfy

**Drug Facts No. 29**

WE WILL LOCATE AT THE CORNER OF EIGHTH AND MAIN STS., KLAMATH FALLS, IN THE PATTERSON BUILDING BUT WILL NEVER BE FURTHER FROM YOU THAN YOUR NEAREST TELEPHONE.

**Square Deal Drug Store**

SAFETY—SERVICE—SATISFACTION

**People's Market**



**ORDER YOUR MEAT FOR EASTER**

early so we may make arrangements for its prompt delivery. We have received an especially choice shipment of prime beef and real lamb and some very fine hams and bacon. You'll find them delicious in flavor and tenderness. And we are not asking a cent extra for the extra choiceness.

Phone 83